

FOR SALE

635 BROADWAY BLVD SE ALBUQUERQUE, NM 87102



ANNE VALLEJOS

Associate Broker/REALTOR®

(505) 331-8306

annevallejos.realtor@gmail.com



RICK SHUBERT

Associate Broker/REALTOR®

(505) 205-4991

rickshubert@kw.com



COMMERCIAL

6240 Riverside Plaza NW
Albuquerque, NM 87120
505-897-1100

PROPERTY PROFILE

635 BROADWAY BLVD SE ALBUQUERQUE, NM 87102

Details

Sale Price	\$225,000
Price Per SF	\$141.7/SF
Building Size	1,588 SF
Acres	0.1591 ac
Zoning Description	Mixed Use Low Intensity
Building Class	E
Floors	1
Submarket	Downtown

Features

UNLOCK ENDLESS POTENTIAL IN THE HEART OF ABQ'S BROADWAY BLVD CORRIDOR! Imagine your business thriving at 635 Broadway Boulevard SE, a 1500 square foot multi-use space in an MX-L commercial zone. With 7 versatile rooms, a kitchen, and a bathroom, your entrepreneurial dreams can soar—the possibilities are limitless! This adaptable space is ready for your start-up — design space, light manufacturing, a cutting-edge co-working hub buzzing with ideas or a lovely used bookshop! Feel the energy of Albuquerque's cultural heartbeat beneath your feet. Or at this price tear it down and use the land for countless possibilities.



PROPERTY GALLERY

635 BROADWAY BLVD SE ALBUQUERQUE, NM 87102

ANNE VALLEJOS

Associate Broker/REALTOR®

(505) 331-8306

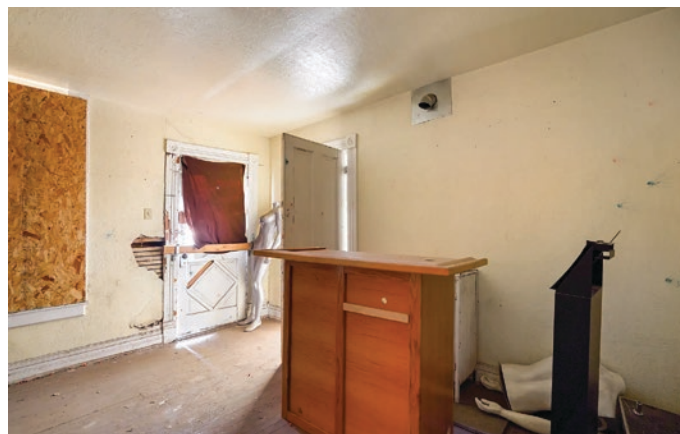
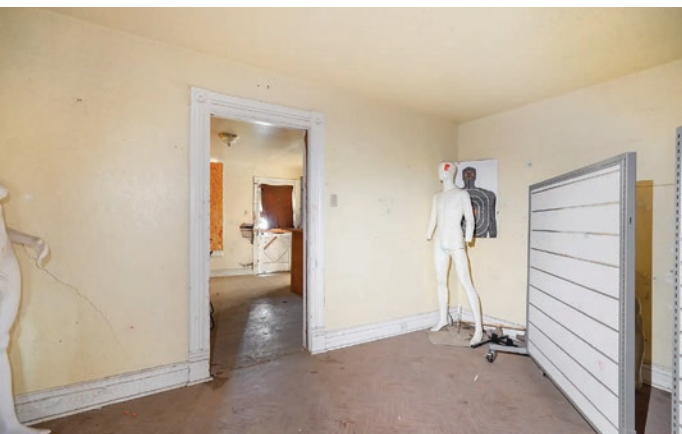
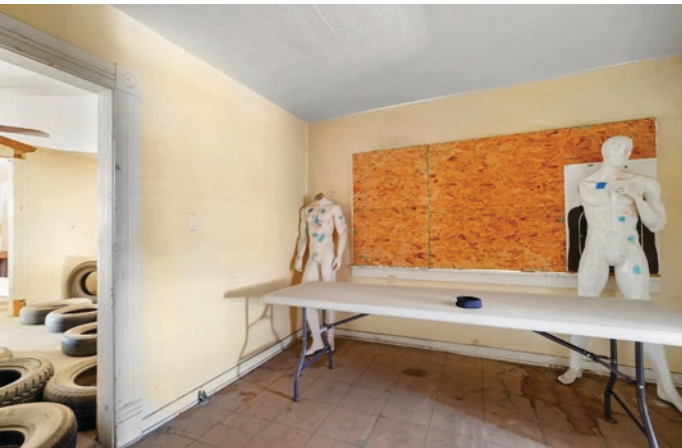
annevallejos.realtor@gmail.com

RICK SHUBERT

Associate Broker/REALTOR®

(505) 205-4991

rickshubert@kw.com



AREA MAP

635 BROADWAY BLVD SE ALBUQUERQUE, NM 87102

ANNE VALLEJOS

Associate Broker/REALTOR®

(505) 331-8306

annevallejos.realtor@gmail.com

RICK SHUBERT

Associate Broker/REALTOR®

(505) 205-4991

rickshubert@kw.com



DEMOGRAPHICS

635 BROADWAY BLVD SE ALBUQUERQUE, NM 87102

ANNE VALLEJOS

Associate Broker/REALTOR®

(505) 331-8306

annevallejos.realtor@gmail.com

RICK SHUBERT

Associate Broker/REALTOR®

(505) 205-4991

rickshubert@kw.com



	1 Mile	3 Miles	5 Miles
Population	30,672	128,025	302,736
Median Household Income	\$40,654	\$50,907	\$53,415
Employees	26,160	107,044	249,844

**information from 2023*