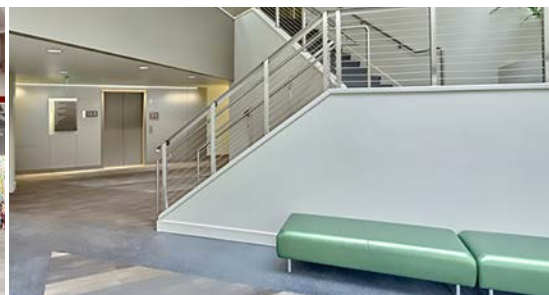
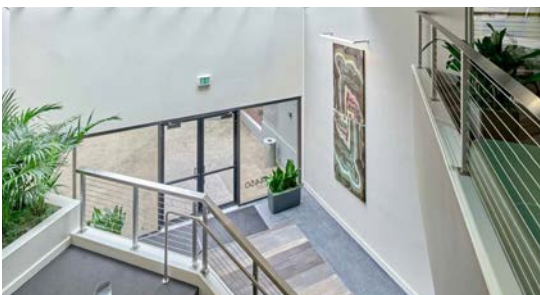


THE CLOVER BUILDING

14450 NORTHEAST 29TH PLACE, BELLEVUE, WA 98007



LISTING INFORMATION

SUITE 104:	2,929 SF
SUITE 114:	2,197 SF
SUITE 200:	16,307 SF
SUITE 215:	4,107 SF
LEASE RATE:	\$22.00 SF/Yr NNN
NNN RATE:	\$12.00 SF/Yr
TOTAL BUILDING SF:	56,349 SF
YEAR RENOVATED:	2016

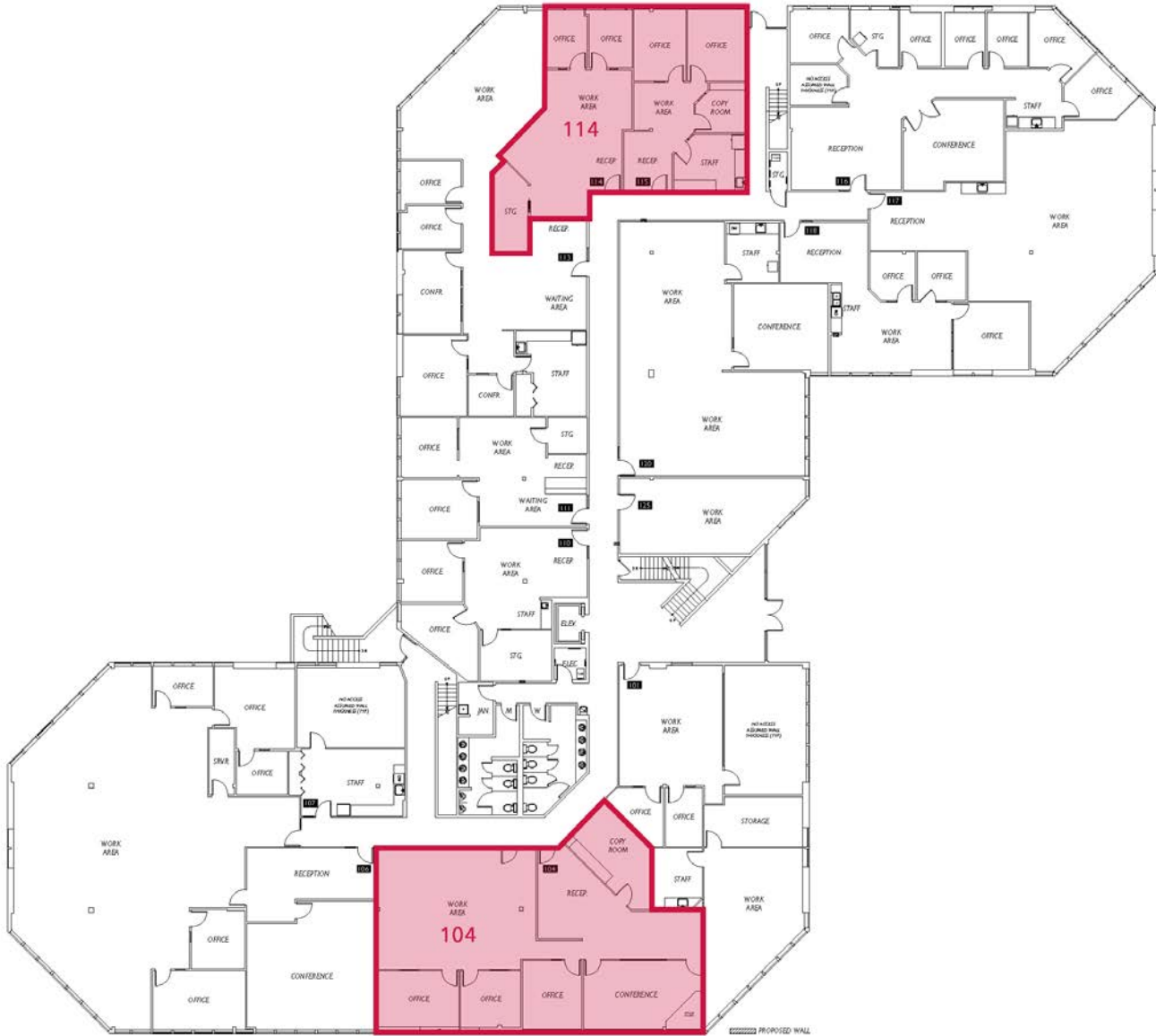
COMMENTS

- » Building signage with high visibility from WA- 520 available
- » Fitness facility with showers and locker rooms on basement level (open 24/7)
- » Basement storage available
- » Abundant surface and garage parking



THE CLOVER BUILDING

14450 NORTHEAST 29TH PLACE, BELLEVUE, WA 98007



AVAILABLE SPACES

SUITE	SIZE (SF)	LEASE TYPE	LEASE RATE	DESCRIPTION
Suite 104	2,929 SF	Full Service	\$38.00 SF/yr	-
Suite 114	2,197 SF	Full Service	\$38.00 SF/yr	-

CONTACT

Aaron Mathieu

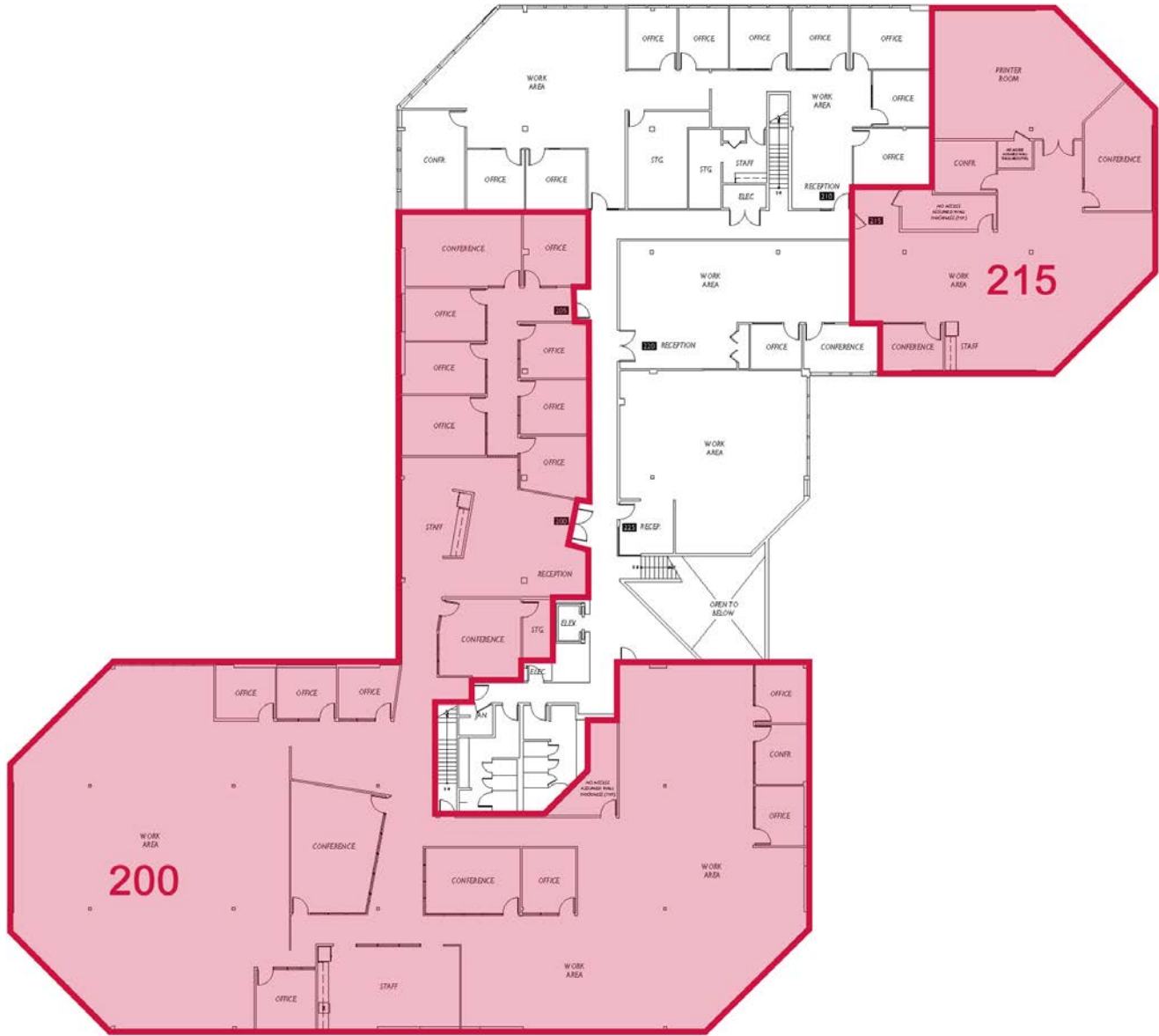
amathieu@lee-associates.com

C 206.948.4670

All information furnished regarding property for sale, rental or financing is from sources deemed reliable, but no warranty or representation is made to the accuracy thereof and same is submitted to errors, omissions, change of price, rental or other conditions prior to sale, lease or financing or withdrawal without notice. No liability of any kind is to be imposed on the broker herein.

THE CLOVER BUILDING

14450 NORTHEAST 29TH PLACE, BELLEVUE, WA 98007



AVAILABLE SPACES

SUITE	SIZE (SF)	LEASE TYPE	LEASE RATE	DESCRIPTION
Suite 200	16,307 SF	Full Service	\$38.00 SF/yr	-
Suite 215	4,107 SF	Full Service	\$38.00 SF/yr	-

CONTACT

Aaron Mathieu

amathieu@lee-associates.com

C 206.948.4670

All information furnished regarding property for sale, rental or financing is from sources deemed reliable, but no warranty or representation is made to the accuracy thereof and same is submitted to errors, omissions, change of price, rental or other conditions prior to sale, lease or financing or withdrawal without notice. No liability of any kind is to be imposed on the broker herein.

THE CLOVER BUILDING

14450 NORTHEAST 29TH PLACE, BELLEVUE, WA 98007



CONTACT

Aaron Mathieu

amathieu@lee-associates.com

C 206.948.4670

All information furnished regarding property for sale, rental or financing is from sources deemed reliable, but no warranty or representation is made to the accuracy thereof and some is submitted to errors, omissions, change of price, rental or other conditions prior to sale, lease or financing or withdrawal without notice. No liability of any kind is to be imposed on the broker herein.