

PRIME 850 SF OF RETAIL FOR LEASE IN LAKEWOOD!

15709 DETROIT AVE, LAKEWOOD, OHIO 44107



**EXCLUSIVE
LISTING CONTACT:**

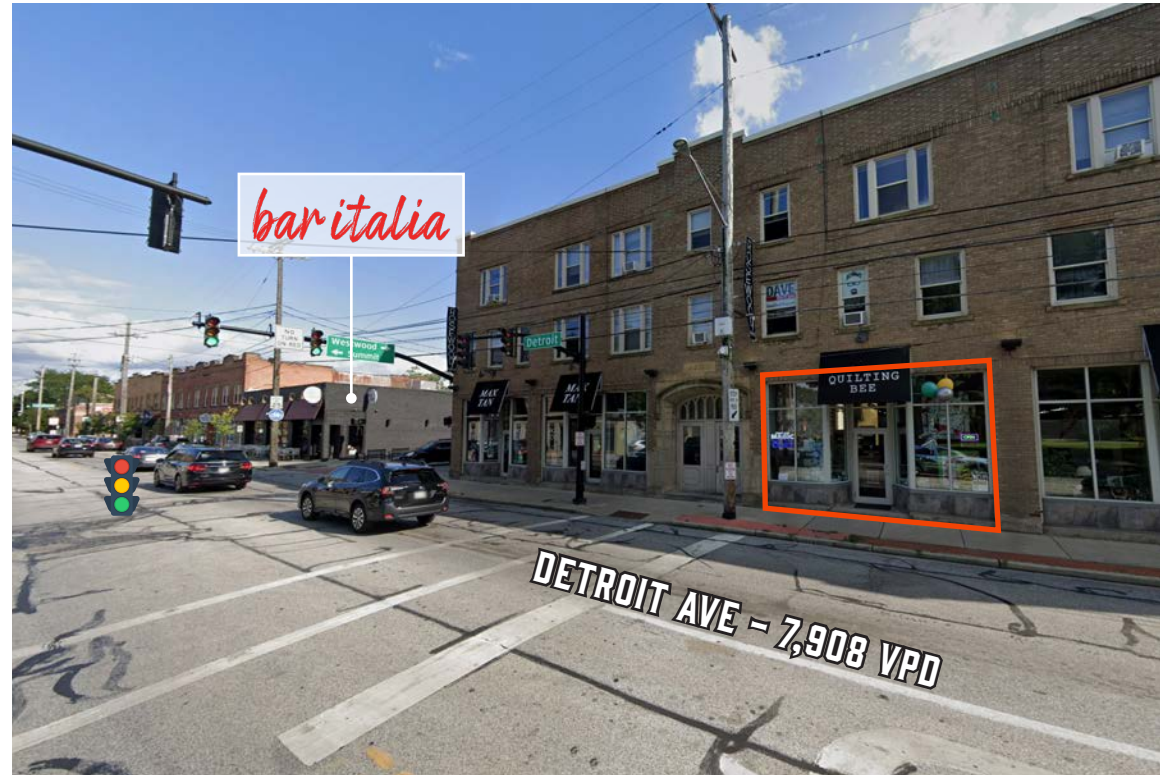
Connor Ambrose
Associate
216 535 4730
connor.ambrose@cbre.com

FOR LEASE | 850 SF

CBRE

THE OPPORTUNITY

- Prime 850 SF of Retail Available For Lease in Lakewood!
- The property features great storefront visibility, located in the heart of Lakewood right up on Detroit Ave
- Basement available for extra storage
- Access to two reserved parking spaces in the rear for customers or employees
- Convenient street parking available along Detroit Ave, Westwood Ave, and Summit Ave
- Lakewood is a dense and rapidly growing community, with a population of over 110K+ within a 3 mile radius
- Notable restaurants nearby include Bar Italia, Lakewood Truck Park, Humble Wine Bar, Game On Lakewood, Starbucks, Chipotle, Marc's and many more!



QUICK STATS - 3 MILE RADIUS



DAYTIME
POPULATION
85,107



POPULATION
112,822



HOUSEHOLDS
55,422



POPULATION
25 & OVER
84,132

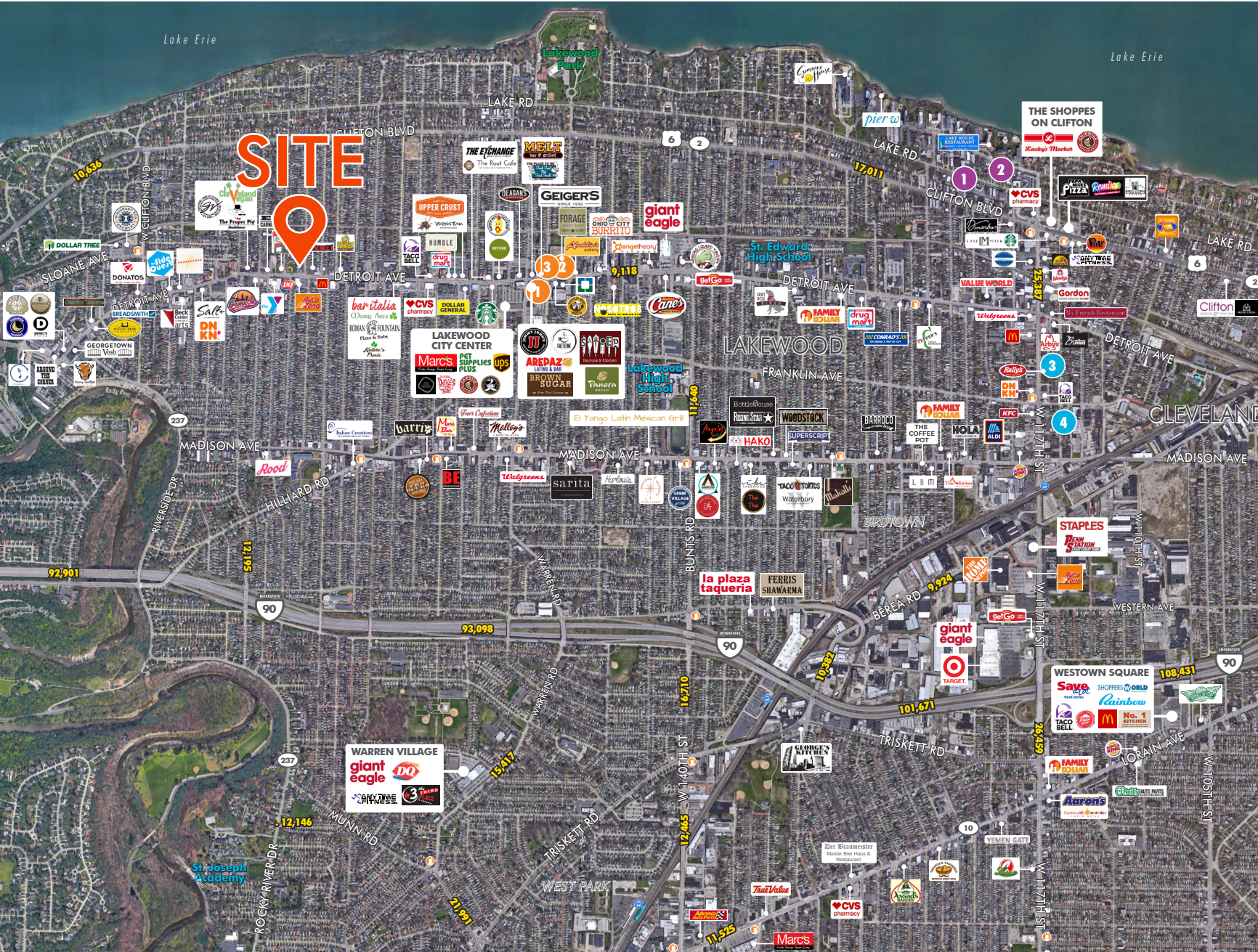


AVG. HOUSEHOLD
INCOME
\$94,630

INTERIOR PICTURES



RETAIL TRADE MAP



LAKWOOD-CLEVELAND WEST RETAIL TRADE AREA

- TRADE AREA INFO**
Madison Ave & Bunts Rd
(3 Miles)
- Population: 139,354
 - Daytime Population: 109,246
 - Total Households: 65,826
 - Average HH Income: \$83,274
 - Total Businesses: 3,749
 - Total Employees: 44,396

- MAJOR OFFICE BLDGS**
2.3 MSF (3 Miles)
1. Lakewood Center North - 258,470 SF
 2. INA Building - 210,000 SF
 3. Lakewood Center West - 77,112 SF

- HOTELS**
2 Hotels/109 Rooms
1. Days Inn - 66
 2. Travelodge - 43

- MAJOR EMPLOYERS**
1. Fairview Hospital - 2,000 (Off Map)
 2. PPG Industries - 650 (Off Map)
 3. FirstChoice - 500
 4. The Kirby Company - 425
 5. Alpha Packaging - 300 (Off Map)

© 2024 CBRE, Inc. All rights reserved. This information has been obtained from sources believed reliable, but has not been verified for accuracy or completeness. You should conduct a careful, independent investigation of the property and verify all information. Any reliance on this information is solely at your own risk. CBRE and the CBRE logo are service marks of CBRE, Inc. All other marks displayed on this document are the property of their respective owners, and the use of such logos does not imply any affiliation with or endorsement of CBRE
Licensed Real Estate Broker
Updated: December 5, 2024

DEMOGRAPHICS

	1 MILE	3 MILES	5 MILES
2024 Population - Current Year Estimate	25,416	112,822	215,986
2024 Daytime Population	17,251	85,107	179,552
2024 Households - Current Year Estimate	12,879	55,422	100,513
2024 Average Household Income	\$105,431	\$94,630	\$89,720
2029 Average Household Income Projection	\$124,679	\$111,679	\$106,365
2024 Median Household Income	\$74,864	\$63,090	\$59,559
2024 Population Over 25	19,342	84,132	157,344

CONTACT US

Connor Ambrose

Associate

216 535 4730

connor.ambrose@cbre.com

© 2024 CBRE, Inc. All rights reserved. This information has been obtained from sources believed reliable, but has not been verified for accuracy or completeness. You should conduct a careful, independent investigation of the property and verify all information. Any reliance on this information is solely at your own risk. CBRE and the CBRE logo are service marks of CBRE, Inc. All other marks displayed on this document are the property of their respective owners, and the use of such logos does not imply any affiliation with or endorsement of CBRE. Photos herein are the property of their respective owners. Use of these images without the express written consent of the owner is prohibited. Licensed Real Estate Broker.

CBRE