

# FOR LEASE

480 24th Ave NW,  
Suite 172-178  
Norman, OK 73069



# Johnson

Commercial Group

JohnsonCommercialGroup.com



## Offering Summary

**Suite SF: 5,307 SF**

**Lease Rate: \$18 SF/YR**

**NNN Rate: \$4.50 SF/YR**

**Zoning: C-2**

**Year Built: 2010**

**Traffic Count: 18,451**

**Building Size: 85,726 SF**

## Property Overview

Suite 172-178 at Madison Square offers 5,307 SF of flexible space, formerly a gym and well-suited for fitness, wellness, office, or service users. The layout includes a reception area, two large open gym/workspace areas, and three private offices, providing a strong mix of open and private space. Additional features include a breakroom, two restrooms, two showers, and a utility room, making it ideal for operations that require locker room-style amenities. Located in a high-traffic NW Norman center, this suite offers excellent potential for a variety of uses.

**Chris Johnson**  
chris@jcgok.com  
405.435.3572



**BRICK & BEAM**  
REALTY

**Sally Allen**  
sally@jcgok.com  
405.623.7920

# FOR LEASE

480 24th Ave NW,  
Suite 172-178  
Norman, OK 73069



# Johnson

Commercial Group

JohnsonCommercialGroup.com



**Chris Johnson**  
chris@jcgok.com  
405.435.3572



**BRICK & BEAM**  
REALTY

**Sally Allen**  
sally@jcgok.com  
405.623.7920

# FOR LEASE

480 24th Ave NW,  
Suite 172-178  
Norman, OK 73069



# Johnson

Commercial Group

JohnsonCommercialGroup.com



**Chris Johnson**  
chris@jcgok.com  
405.435.3572



**Sally Allen**  
sally@jcgok.com  
405.623.7920

# FOR LEASE

480 24th Ave NW,  
Suite 172-178  
Norman, OK 73069



# Johnson

Commercial Group

JohnsonCommercialGroup.com



**Chris Johnson**  
chris@jcgok.com  
405.435.3572



**Sally Allen**  
sally@jcgok.com  
405.623.7920

# FOR LEASE

480 24th Ave NW,  
Suite 172-178  
Norman, OK 73069



# Johnson

Commercial Group

JohnsonCommercialGroup.com



**Chris Johnson**  
chris@jcgok.com  
405.435.3572



BRICK & BEAM  
REALTY

**Sally Allen**  
sally@jcgok.com  
405.623.7920

# FOR LEASE

480 24th Ave NW,  
Suite 172-178  
Norman, OK 73069



# Johnson

Commercial Group

JohnsonCommercialGroup.com



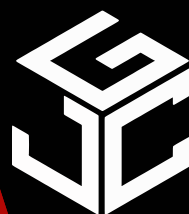
**Chris Johnson**  
chris@jcgok.com  
405.435.3572

 **BRICK & BEAM**  
REALTY

**Sally Allen**  
sally@jcgok.com  
405.623.7920

# FOR LEASE

480 24th Ave NW,  
Suite 172-178  
Norman, OK 73069



# Johnson

Commercial Group

JohnsonCommercialGroup.com



**Chris Johnson**  
chris@jcgok.com  
405.435.3572



**Sally Allen**  
sally@jcgok.com  
405.623.7920

# FOR LEASE

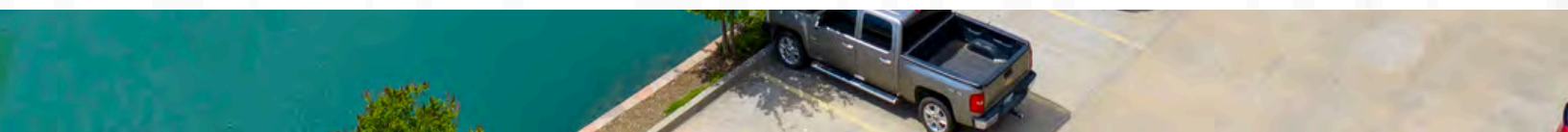
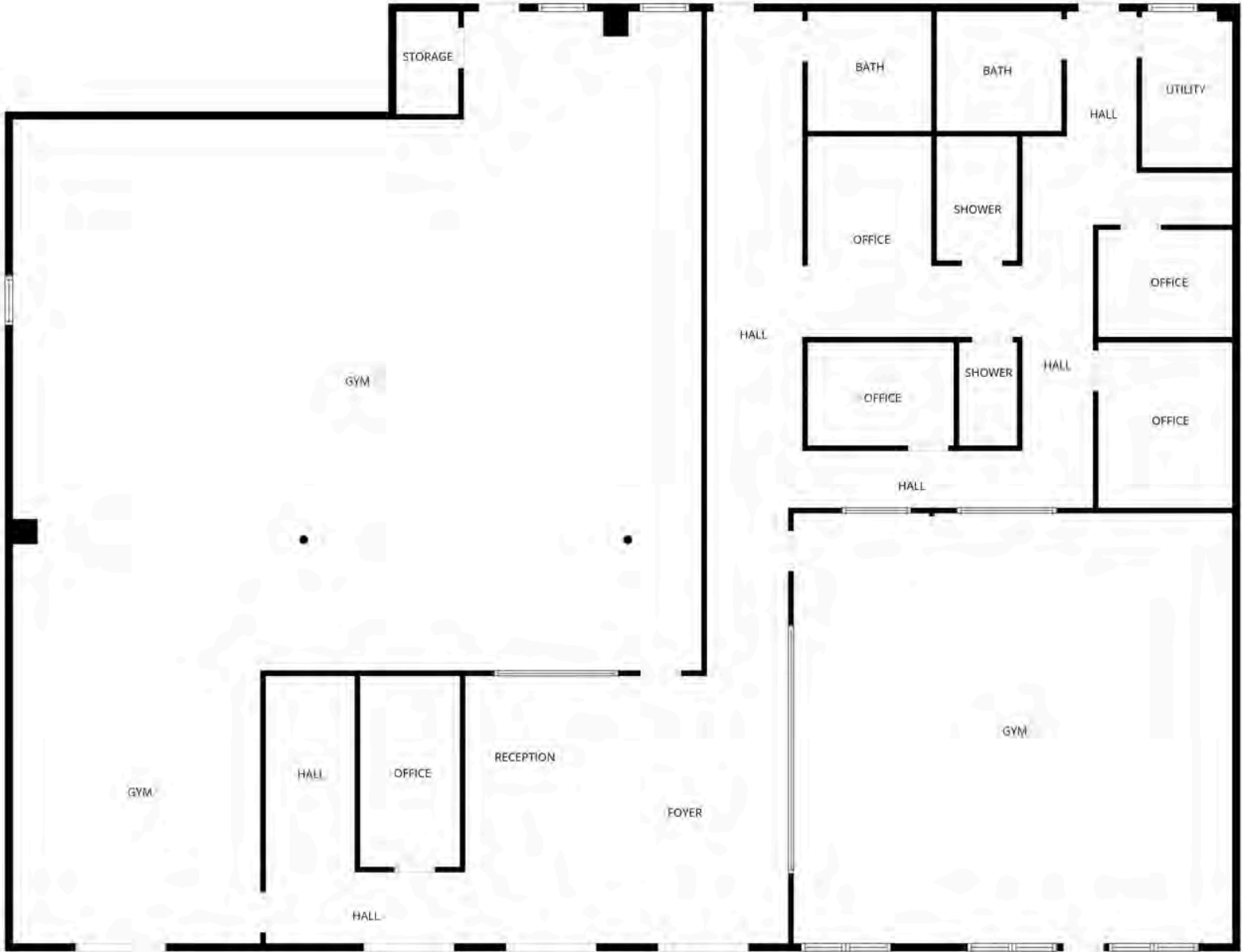
480 24th Ave NW,  
Suite 172-178  
Norman, OK 73069



# Johnson

Commercial Group

JohnsonCommercialGroup.com



**Chris Johnson**  
chris@jcgok.com  
405.435.3572



**BRICK & BEAM**  
REALTY

**Sally Allen**  
sally@jcgok.com  
405.623.7920

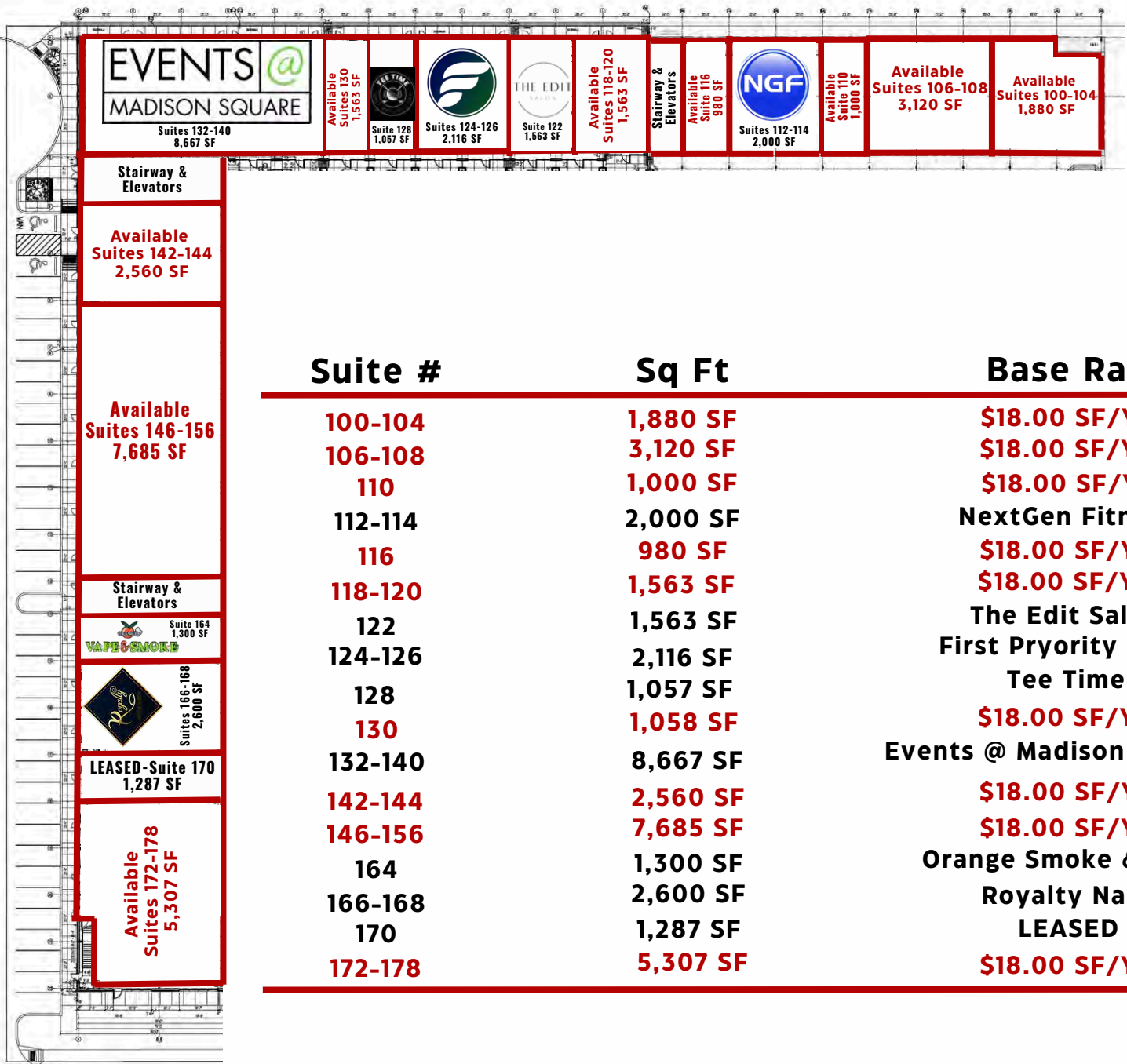
# FOR LEASE

First Floor  
Suites 100-178



**Johnson**  
Commercial Group

JohnsonCommercialGroup.com



Suite #	Sq Ft	Base Rate
100-104	1,880 SF	\$18.00 SF/YR
106-108	3,120 SF	\$18.00 SF/YR
110	1,000 SF	\$18.00 SF/YR
112-114	2,000 SF	NextGen Fitness
116	980 SF	\$18.00 SF/YR
118-120	1,563 SF	\$18.00 SF/YR
122	1,563 SF	The Edit Salon
124-126	2,116 SF	First Priority Bank
128	1,057 SF	Tee Time
130	1,058 SF	\$18.00 SF/YR
132-140	8,667 SF	Events @ Madison Square
142-144	2,560 SF	\$18.00 SF/YR
146-156	7,685 SF	\$18.00 SF/YR
164	1,300 SF	Orange Smoke & Vape
166-168	2,600 SF	Royalty Nails
170	1,287 SF	LEASED
172-178	5,307 SF	\$18.00 SF/YR

Chris Johnson  
chris@jcgok.com  
405.435.3572



Sally Allen  
sally@jcgok.com  
405.623.7920

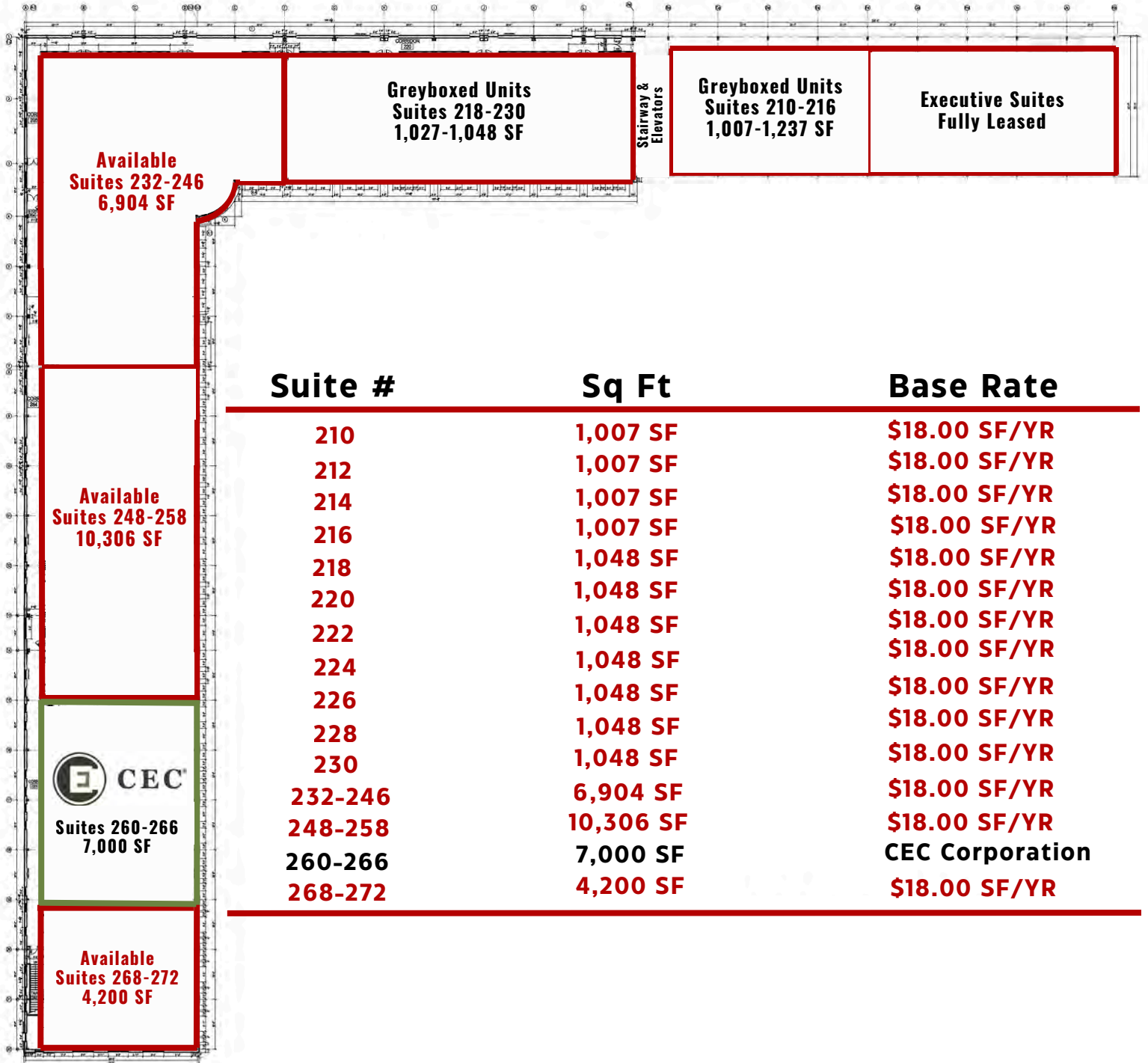
# FOR LEASE

**Second Floor  
Suites 210-272**



**Johnson**  
Commercial Group

JohnsonCommercialGroup.com



Suite #	Sq Ft	Base Rate
210	1,007 SF	\$18.00 SF/YR
212	1,007 SF	\$18.00 SF/YR
214	1,007 SF	\$18.00 SF/YR
216	1,007 SF	\$18.00 SF/YR
218	1,048 SF	\$18.00 SF/YR
220	1,048 SF	\$18.00 SF/YR
222	1,048 SF	\$18.00 SF/YR
224	1,048 SF	\$18.00 SF/YR
226	1,048 SF	\$18.00 SF/YR
228	1,048 SF	\$18.00 SF/YR
230	1,048 SF	\$18.00 SF/YR
232-246	6,904 SF	\$18.00 SF/YR
248-258	10,306 SF	\$18.00 SF/YR
260-266	7,000 SF	CEC Corporation
268-272	4,200 SF	\$18.00 SF/YR

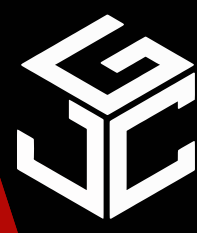
**Chris Johnson**  
chris@jcgok.com  
405.435.3572



**Sally Allen**  
sally@jcgok.com  
405.623.7920

# FOR LEASE

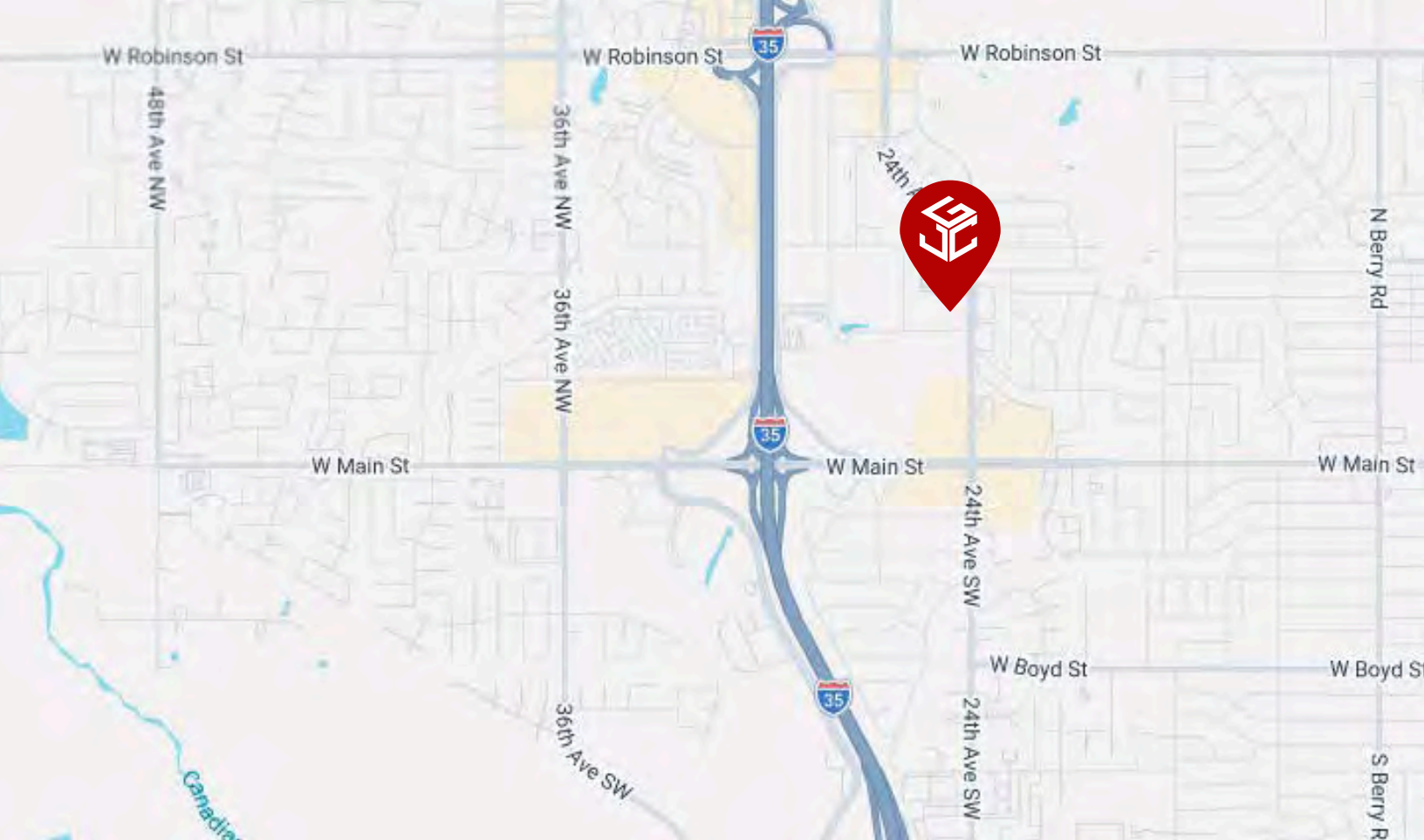
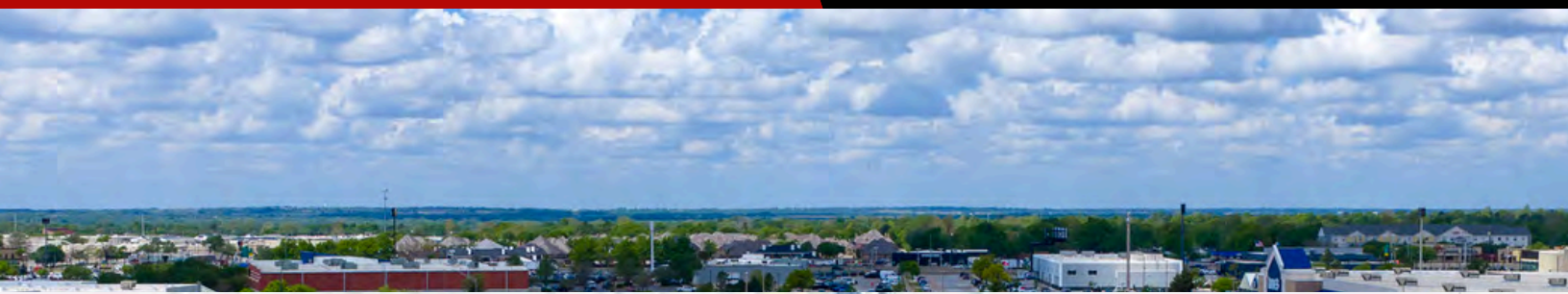
480 24th Ave NW,  
Norman, OK 73069



# Johnson

Commercial Group

JohnsonCommercialGroup.com



**Chris Johnson**  
chris@jcgok.com  
405.435.3572



**Sally Allen**  
sally@jcgok.com  
405.623.7920

# FOR LEASE

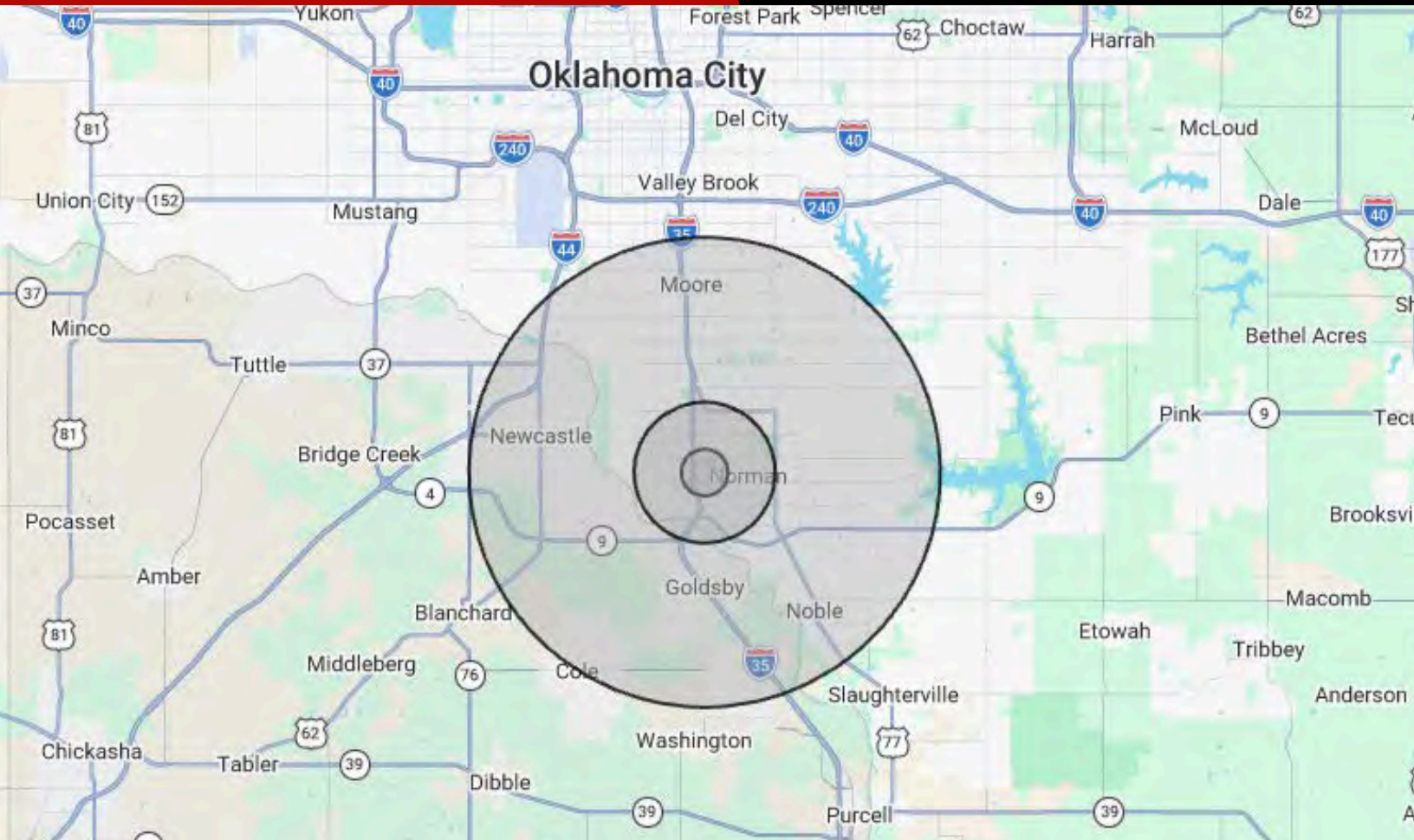
480 24th Ave NW,  
Norman, OK 73069



# Johnson

Commercial Group

JohnsonCommercialGroup.com



### Demographics

### 1 MILE

### 3 MILE

### 10 MILE

Population	7,158	68,829	250,126
Average Age	40	32	35
Employment	9,453	70,865	118,888
Households	3,196	26,766	96,363
Ave. Household Income	\$72,333	\$81,299	\$85,537
Median Household Value	\$191,041	\$222,962	\$199,560

### Traffic Count

### Average Daily Volume

**18,451 Vehicles**

Demographic data provided by CoStar

**Chris Johnson**  
chris@jcgok.com  
405.435.3572

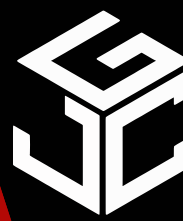


**BRICK & BEAM**  
REALTY

**Sally Allen**  
sally@jcgok.com  
405.623.7920

# FOR LEASE

480 24th Ave NW,  
Norman, OK 73069



# Johnson

Commercial Group

JohnsonCommercialGroup.com



## Disclaimer

A real estate broker is not authorized to give legal or tax advice. No representation is made by Johnson Commercial Group, its agents or employees, as to the legal effect or tax consequences of the information contained herein or any transaction relating thereto. Although all information furnished regarding property sales or financing options are from sources deemed to be reliable, such information has not been verified and no express representation is made on, or is in any way implied as to the accuracy thereof and is subject to errors, omissions, change of price, or other conditions prior to sale or withdrawal without notice.

**Chris Johnson**  
chris@jcgok.com  
405.435.3572



**Sally Allen**  
sally@jcgok.com  
405.623.7920