

FOR SALE

**2101 E 37TH STREET
VERNON, CA 90058**

**±5,400 SF
INDUSTRIAL BUILDING**

For more information, please contact:

Jae Lee
(213) 999-9005
jaelee4989@gmail.com
DRE# 01710368

PARK INDUSTRIAL
SPECIALIZING IN INDUSTRIAL REAL ESTATE SERVICES

Park Industrial Realty
800 McGarry St, 5th Floor
Los Angeles, CA 90021
Corporation DRE# 01983713

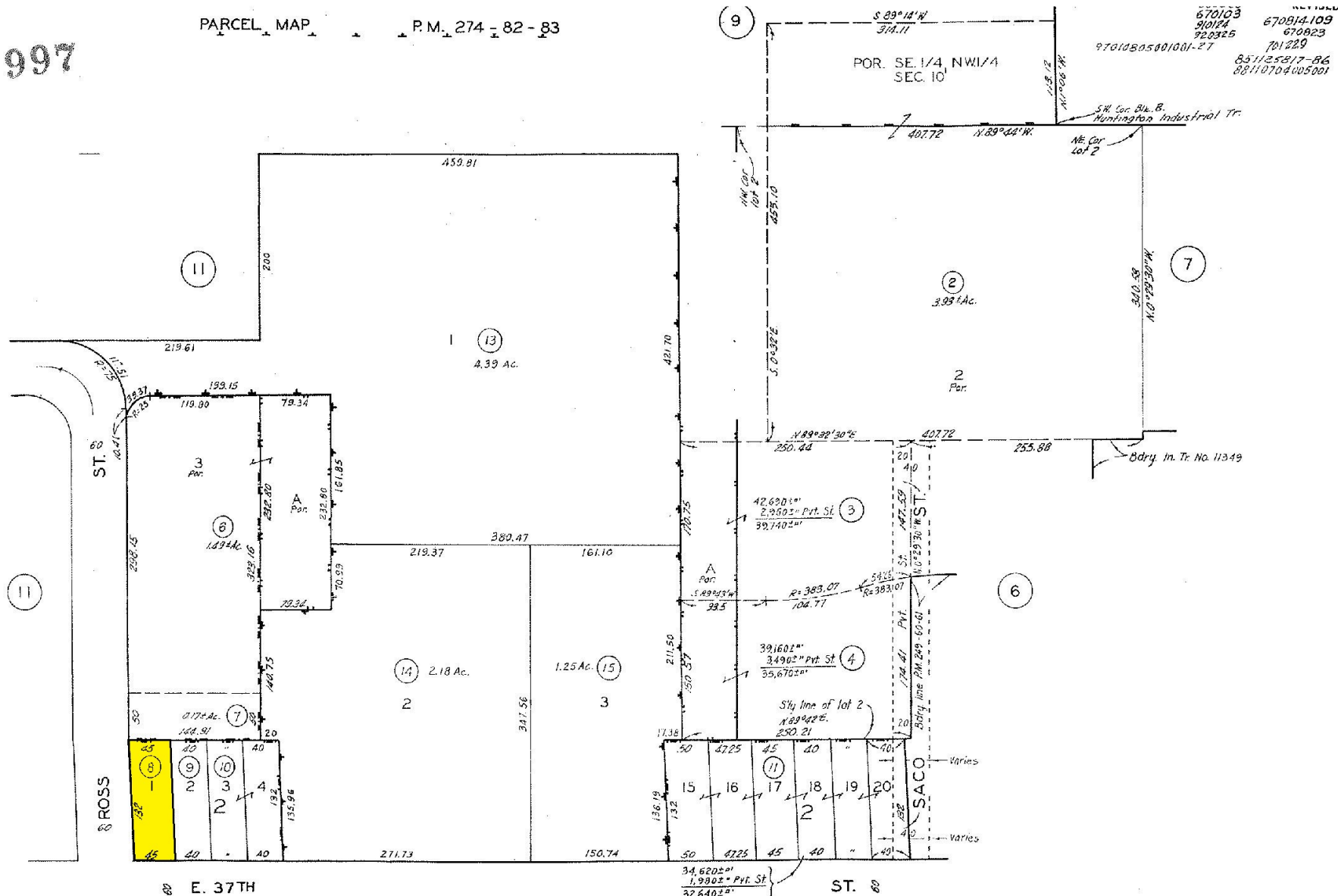
Building SF:	5,400 SF	• Freestanding industrial building
Land SF:	5,957 SF	• Excellent owner-user purchase opportunity
Office SF:	600 SF	• North Vernon location close to Downtown LA
Year Built:	1962	• Excellent for manufacturing use
Clear Height:	16'	• Heavy 3 phase electrical power – 400 amps
Power:	400a, 120-480v, 3p	• 16 feet ceiling clear height
Loading:	2 GL	• 4 fenced & gated parking plus abundant available street parking
Zoning:	M	
Sale Price:	\$1,590,000 (\$294.44/SF)	

All information has been furnished from sources which we deem reliable, but for which we assume no liability. All measurements are approximate. Broker/Owner do not warrant its accuracy. Buyer/Lessee must verify all information.

6302 10
SCALE 1" = 100'

1997

PARCEL MAP P.M. 274 - 82 - 83



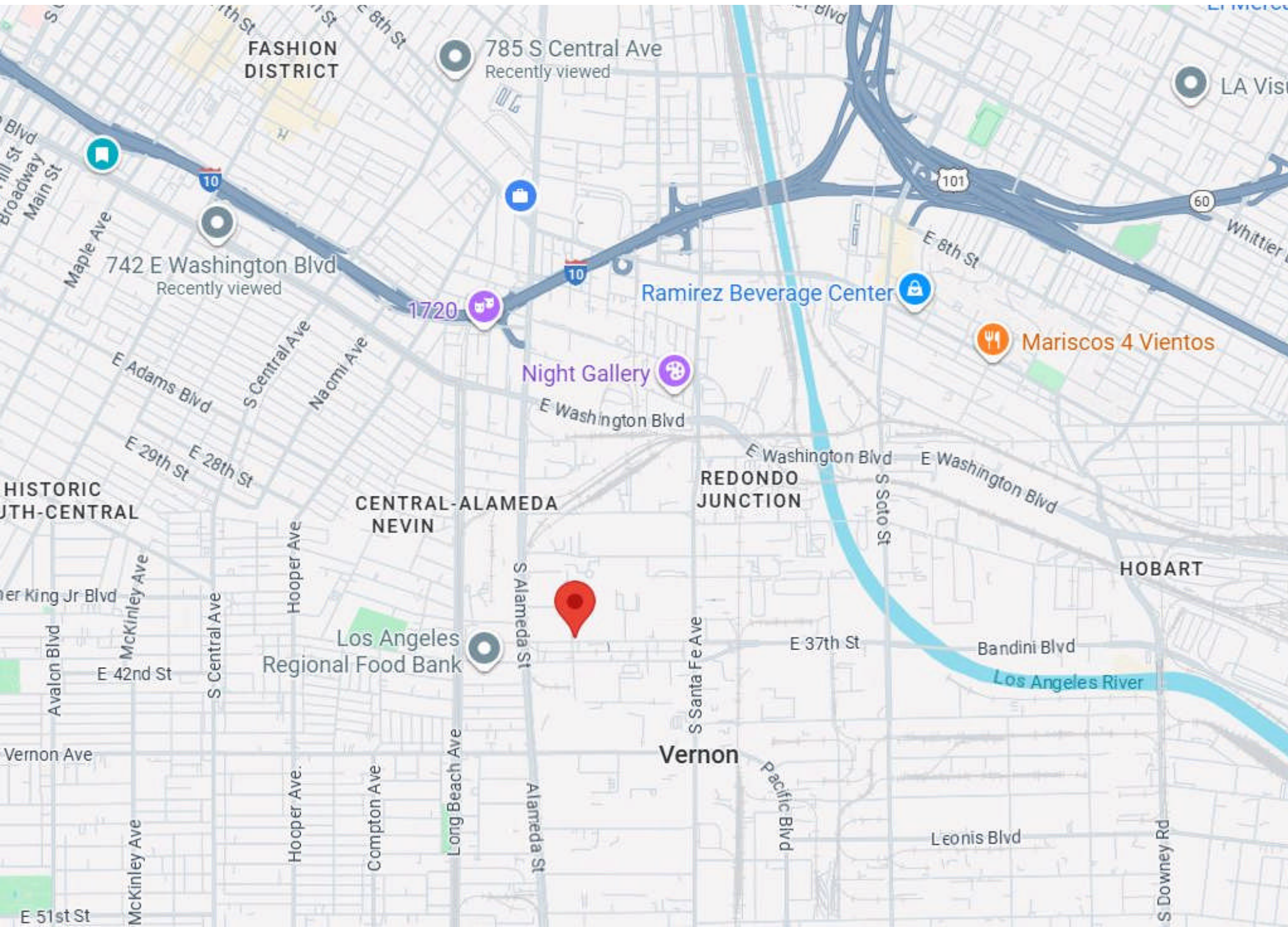
CODE
10716

FOR PREV. ASSM'T. SEE:
6301-5

T. 25. R. 13 W.
CORRECTED MAP OF THE ALDINE
SQUARE TRACT M.R. 29-12
A.L. ROSS TRACT M.R. 36-72

TRACT NO. 128!
TRACT NO. 2675!
M. B. 20 - 6
M. B. 679-73-74

ASSESSOR'S MAP
COUNTY OF LOS ANGELES, CALIF.



FOR SALE | ±5,400 SF Industrial Building

2101 E 37th Street



FOR SALE | ±5,400 SF Industrial Building

2101 E 37th Street



FOR SALE | ±5,400 SF Industrial Building

2101 E 37th Street





FOR SALE | ±5,400 SF Industrial Building

2101 E 37th Street

