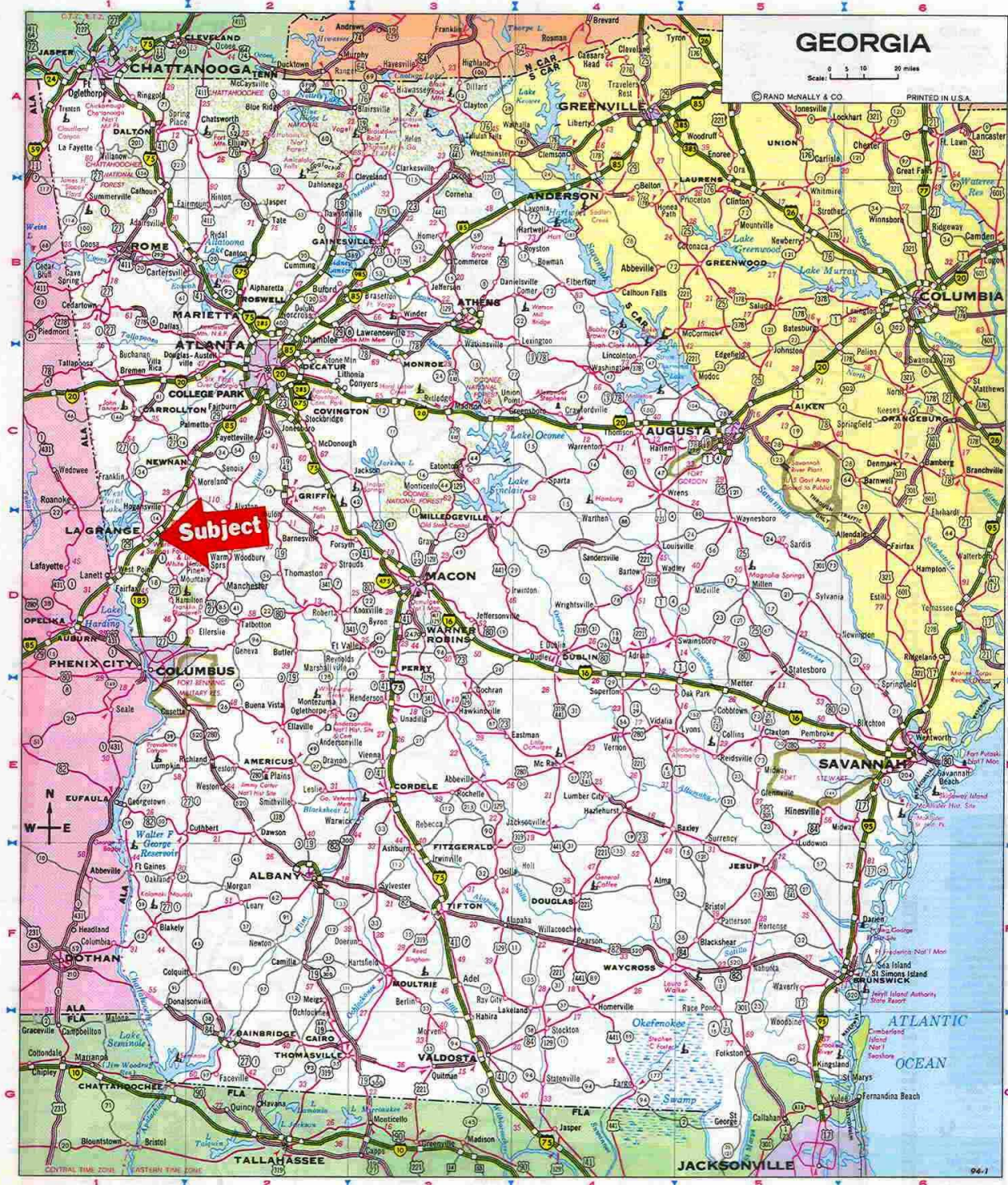




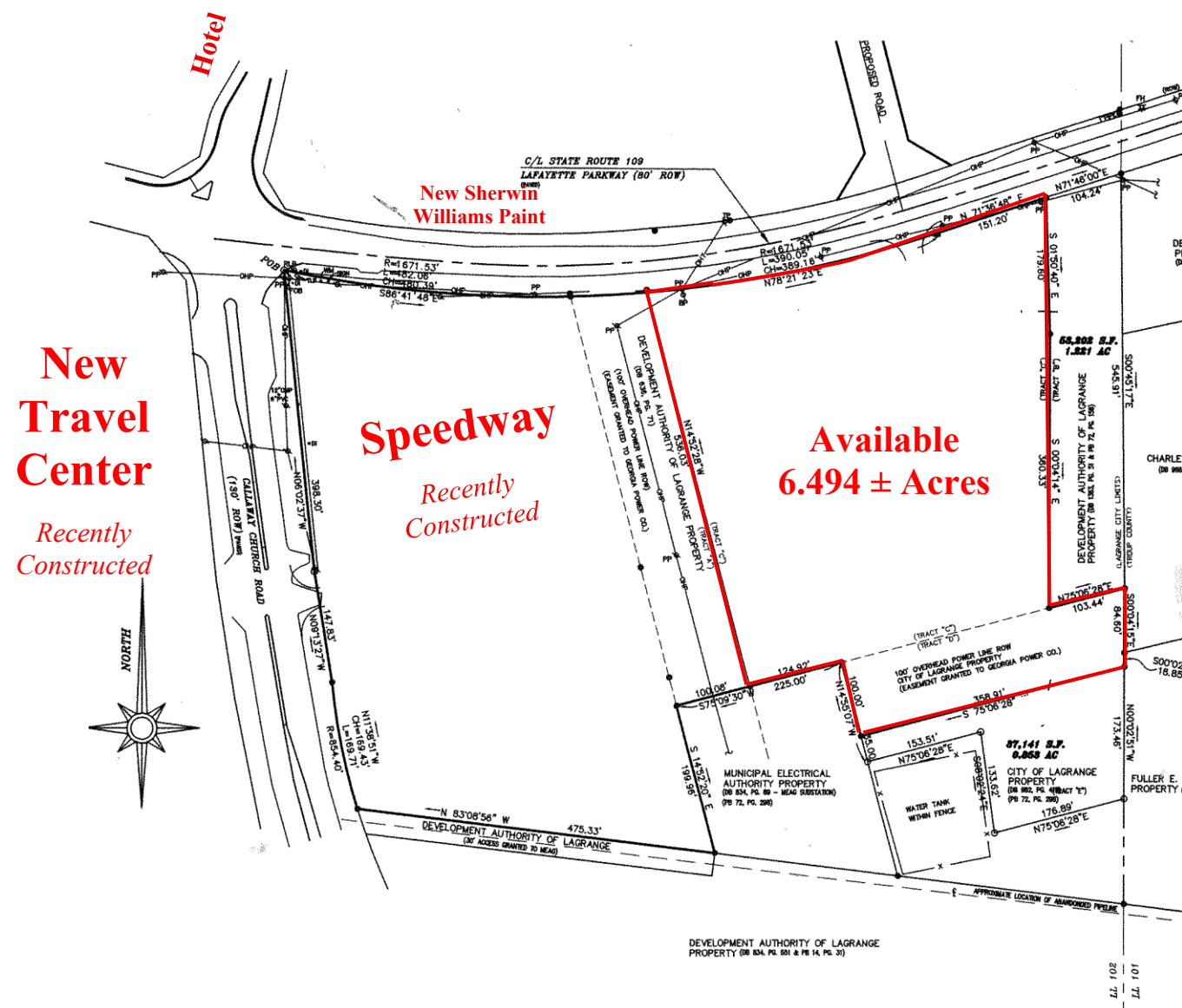


# Area General Location Map





## Plat – Modified for Illustration



**Property Plat – Modified for Illustration**  
**Topo Available Upon Request**

# Property Area Map



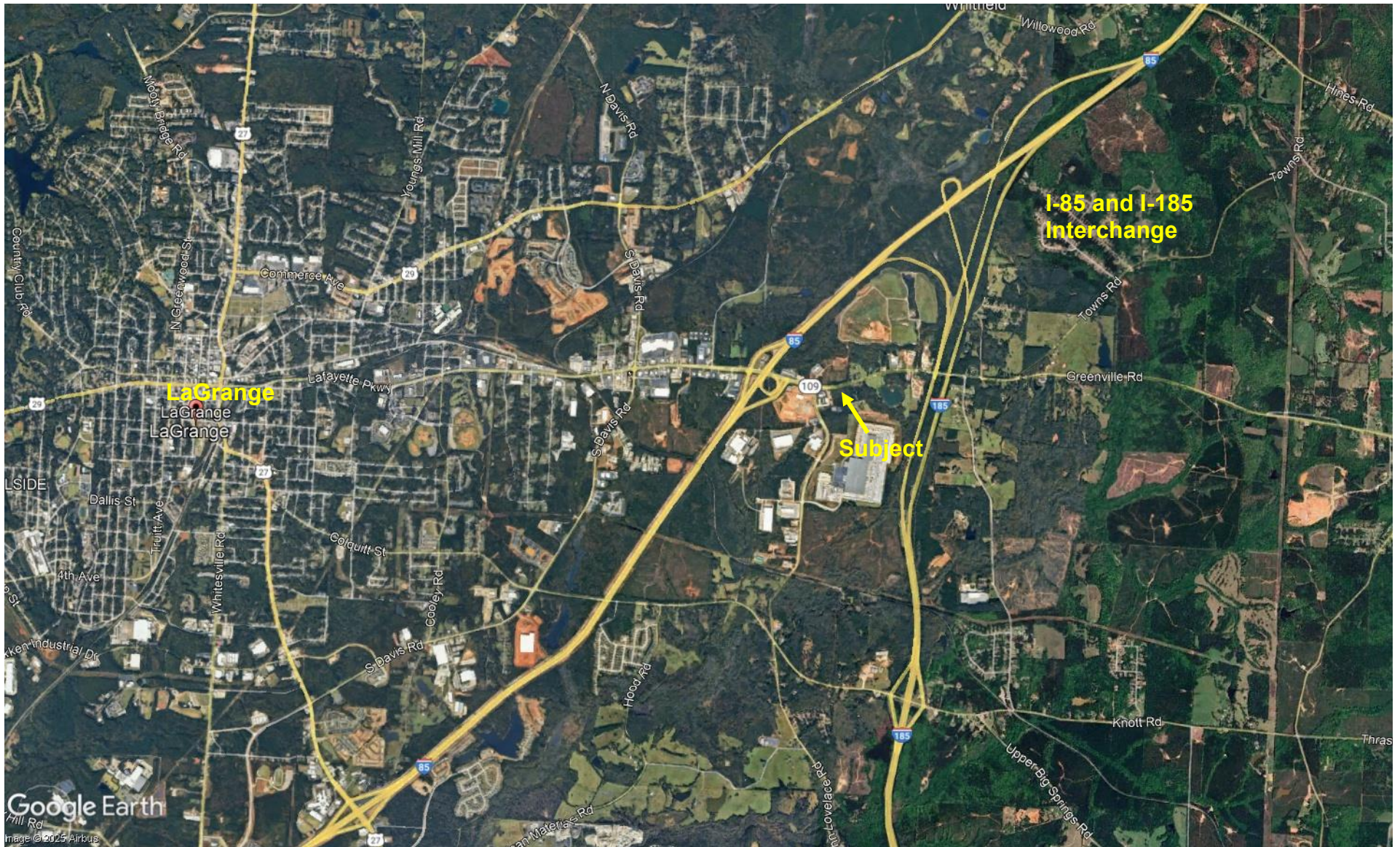


## General Area Aerial





# LaGrange Area Aerial







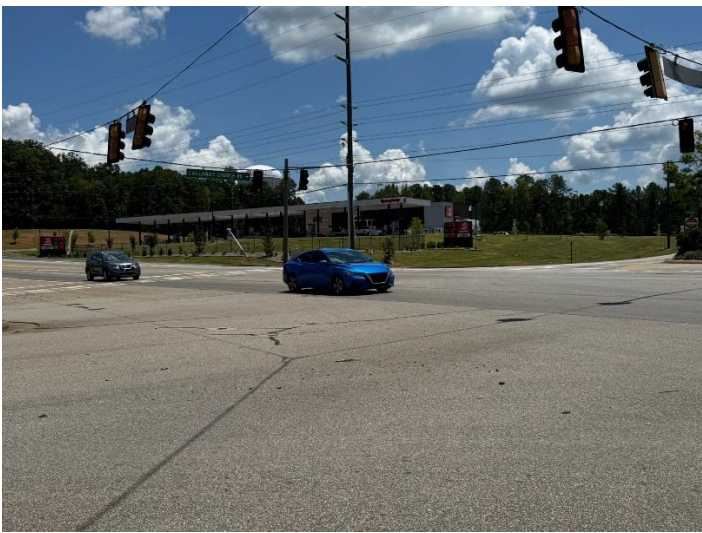
**Subject Property** looking east – Subject is to right of photo



**Subject Property** looking west – Subject is to left of photo



Recently Constructed Travel Center



Recently Constructed Speedway

## General Area Overview

LaGrange is a growing, progressive city just 55± miles south of the busiest airport in the world, Atlanta's Hartsfield International via Interstate I-85. It is the principal city of the LaGrange, Georgia Micropolitan Statistical Area, which is included in the Atlanta-Sandy Springs-Gainesville, Georgia-Alabama Combined Statistical Area. LaGrange is the County Seat of Troup County.

The location of LaGrange makes it a hub of activity. Located at the intersection of two interstates (I-85 and I-185), the cities of Troup County are directly in the center of Georgia's two largest metropolitan cities – Atlanta and Columbus. This area has been named “The Growth Corridor of the South.” More than 25,000 vehicles travel through the county on I-85 and 15,000 on I-185 each day. Over 925,000 people live within a 45-minute drive of downtown LaGrange. Over 2 million people live within 60 miles. More than 3.5 million people visit Troup County's unique tourist attractions annually. LaGrange is home to LaGrange College, Georgia's oldest private college. Currently, more than 1,000 students are enrolled. More than 1,200 students are enrolled at West Georgia Technical College's LaGrange Campus.

The city's proximity to West Point Lake, one of the largest lakes in Georgia, a few miles to the west, helps attract bass fishermen and water sports enthusiasts to the city. The lake is a 26,000-acre reservoir with 525 miles of shoreline and provides excellent opportunities for fishing, camping, boating and other recreational activities at its many day use areas and two marinas. Known for its large-mouth bass, West Point Lake was home to the 2011 and 2013 Bassmaster Elite Series that were attended by more than 14,000 fans each year.

The community's economic foundation prospers because of abundant natural resources, an educated workforce, professional medical facilities, award-winning schools, an excellent transportation network and an outstanding quality of life.

### **Industrial Development**

The overall location is hard to beat. Positioned at the intersection of two interstates (I-85 and I-185), Troup County is an easy drive from Atlanta, Columbus, Birmingham and Montgomery and less than an hour from Atlanta's Hartsfield-Jackson International Airport, the world's busiest hub. The Atlantic Ocean port of Savannah is only 250 miles away and CSX rail operates two main lines heading north/south and east/west to serve the community's industrial parks. LaGrange-Callaway Airport boasts two runways and advanced instrument landing systems to accommodate small and corporate jets.

With three industrial parks in LaGrange and another in West Point, Troup County is a destination for new businesses and industry for multiple reasons.

Strengthened and guided by Development Authorities in LaGrange, West Point, and Hogansville, local governments offer incoming industries innovative finance packages, outstanding industrial tracts and energetic marketing efforts, which contribute to making the area a model for other communities around the state.

Troup County is home to more Fortune 500 regional sites per capita than anywhere in the United States including: Wal-Mart Distribution Center, Duracell, UPS Distribution Center, Caterpillar, Dow Jones/Wall Street Journal, Kimberly-Clark Corporation, Illinois Tool Works, Servicemaster/American Home Shield.

Companies from Canada, Denmark, Germany, India, Japan, Netherlands, Sweden and the United Kingdom have brought their unique cultures to blend with our southern roots. Kia's decision to locate its first North American plant in Troup County has had a tremendous influence on Troup County. The Korean automaker produces three top-selling models at its \$1-billion manufacturing plant. Employing more than 3,000 associates at the plant plus



creating thousands of additional jobs at local suppliers, the investment of Kia Motors Manufacturing Georgia, Inc. has created more than 15,000 regional jobs.

### **Retail Recruitment**

The West Georgia region is experiencing unprecedented economic development, driven primarily by growth at the region's largest employer, Kia Motors Manufacturing Georgia, Inc. As the region has grown, a shortage of retail has developed and a significant number of shoppers are forced to shop outside the region. The LaGrange-Troup County Chamber of Commerce, in conjunction with local government and the area's commercial real estate community, is actively recruiting new to the market retail to address this shortage. Troup County wants shoppers to have the opportunity to "Trade in Troup" locally for all their retail needs and are confident our economy has the strength to make this additional retail successful. There are a number of retail developments under development now. In addition, there are ample opportunities throughout LaGrange, Hogansville and West Point to join smaller developments, both new and existing. Members of the Chamber's professional staff stand ready to assist you in bringing your business to the Troup County market. They will: Help you get oriented to the region and the local retail climate, provide custom research and data to help you evaluate potential sites, connect you with the local commercial real estate community, help you interface with local government officials, connect you with other area resources you may need.

They partner with Retail Strategies – [www.retailstrategies.com](http://www.retailstrategies.com), a leading national advisory firm focused on retail market analysis, strategic planning, retail recruitment, and development. The Retail Strategies team conducted a market analysis and have identified key gaps in the retail offerings of our trade area.

Recently, LaGrange became a home to the Great Wolf Lodge Company. The Great Wolf Lodge provides a tremendous indoor water park with water slides, pools, and many additional attractions for families, including but not limited to a rope course, arcade games, and miniature golf.

The outlook for the addition of new businesses and industries remains positive in Troup County.