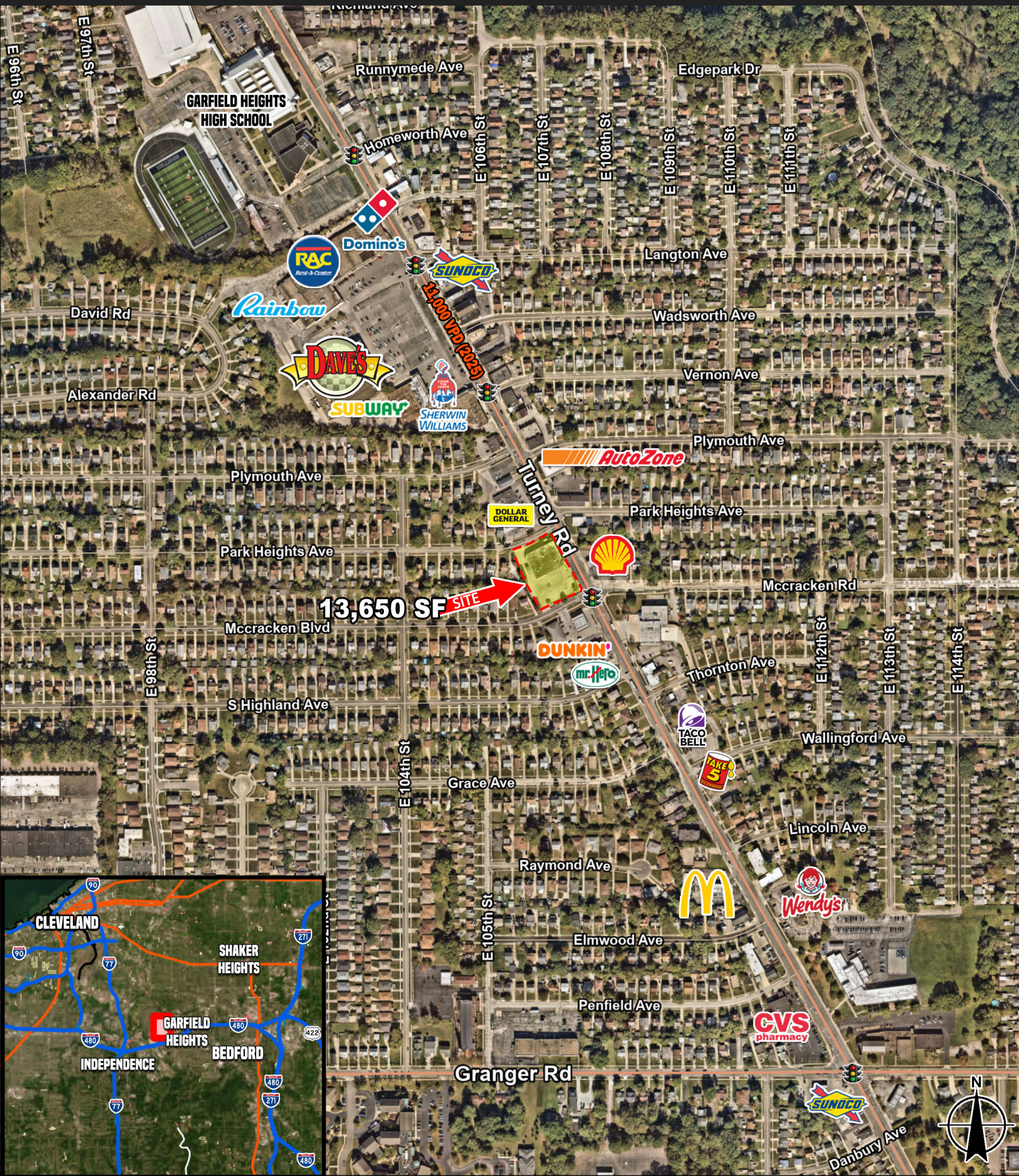


FORMER WALGREENS AVAILABLE (13,650 SF)

5090 TURNEY RD, GARFIELD HEIGHTS, OH 44125 (CLEVELAND, OH)



- HIGHLY VISIBLE LOCATION ON MAJOR ARTERIAL ROAD
- 3 ACCESS DRIVES WITH A DRIVE-THRU AT A SIGNALIZED INTERSECTION 
- DENSELY POPULATED AREA 



KEY DEMOGRAPHICS

	1 - Mile	3 - Mile
Total Population (2025)	14,067	83,975
Average Household Income (2025)	\$67,170	\$60,410
Total Households (2025)	5,795	36,019
Median Household Income (2025)	\$56,784	\$47,716

Contact

Jack Barson
jack@terrational.com
216-912-5810

Rob Solganik
rob@terrational.com
216-912-5809

This information has been secured from sources we believe to be reliable, but we make no representations or warranties, expressed or implied, as to the accuracy of the information. Buyer must verify the information and bears all risk for any inaccuracies.

TERRA NATIONAL
REAL ESTATE GROUP
WWW.TERRANATIONAL.COM

AG REAL ESTATE PARTNERS