

# OFFICE CONDOS AVAILABLE FOR LEASE OR SALE



## JEFF BISCHOFBERGER

Senior Vice President/Principal  
D • 909.373.2708  
E • [jbischof@lee-assoc.com](mailto:jbischof@lee-assoc.com)  
DRE #01512151



Lee & Associates® - Ontario

3535 Inland Empire Blvd., Ontario, CA 91764 | 909.989.7771 | [lee-assoc.com](http://lee-assoc.com) | Corp ID 00976995

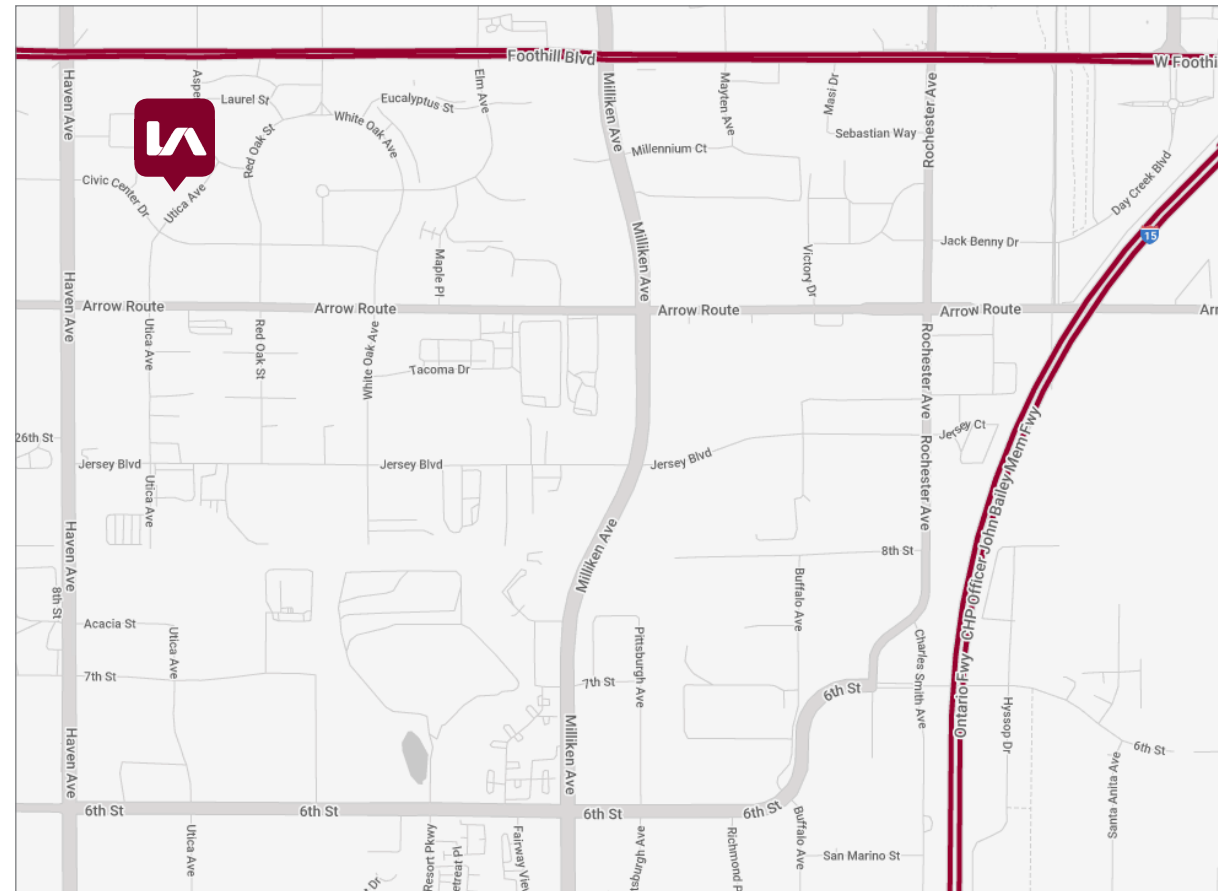
## GREG MARTIN

Senior Vice President/Principal  
D • 909.373.2904  
E • [gmartin@lee-assoc.com](mailto:gmartin@lee-assoc.com)  
DRE #01001749

# PROPERTY FEATURES

- >> ±593 SF to ±11,244 SF Available
- >> Leased Investment Opportunities
- >> Adjacent to Rancho Cucamonga City Hall and the San Bernardino County Court House
- >> Common Area Conference Room
- >> Excellent Civic Center Location
- >> Elevator Served
- >> Within Walking Distance to the New Haven City Market Place
- >> Minutes Away from Many Other Restaurants and Retail Shops
- >> Great Access to the I-10 Freeway
- >> Professionally Managed

# LOCATION MAP



**JEFF BISCHOFBERGER**  
Senior Vice President/Principal  
D • 909.373.2708  
E • [jbischof@lee-assoc.com](mailto:jbischof@lee-assoc.com)  
DRE #01512151

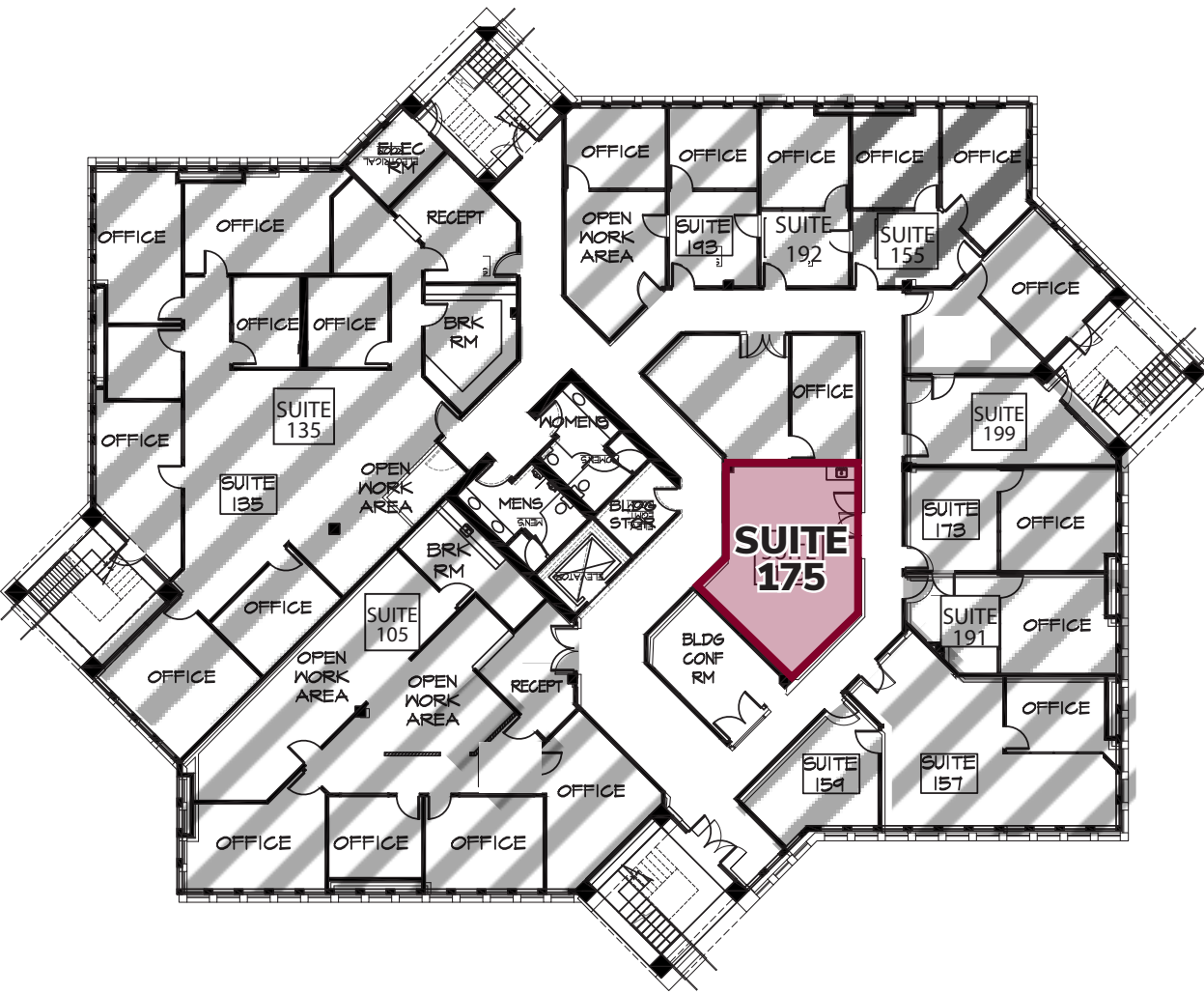


Lee & Associates® - Ontario

**GREG MARTIN**  
Senior Vice President/Principal  
D • 909.373.2904  
E • [gmartin@lee-assoc.com](mailto:gmartin@lee-assoc.com)  
DRE #01001749

3535 Inland Empire Blvd., Ontario, CA 91764 | 909.989.7771 | [lee-assoc.com](http://lee-assoc.com) | Corp ID 00976995

# FIRST FLOOR FLOORPLAN



SUITE	SQUARE FEET	PRICE/ SQUARE FOOT	PRICE	LEASE RATE
105	±2,755			SOLD
135	±4,006			SOLD
155	±671			SOLD
157	±872			SOLD
159	±296			SOLD
160	BUILDING	CONFERENCE ROOM		-
173	±509			SOLD
175	±593	\$400	\$237,200	\$2.05 FSG
191	±452			SOLD
192	±370			SOLD
193	±376			SOLD
194	±498			SOLD
195	±549			SOLD
197	±489			SOLD
199	±300			SOLD

# FIRST FLOOR AVAILABILITY

**JEFF BISCHOFBERGER**  
 Senior Vice President/Principal  
 D • 909.373.2708  
 E • jbischof@lee-assoc.com  
 DRE #01512151

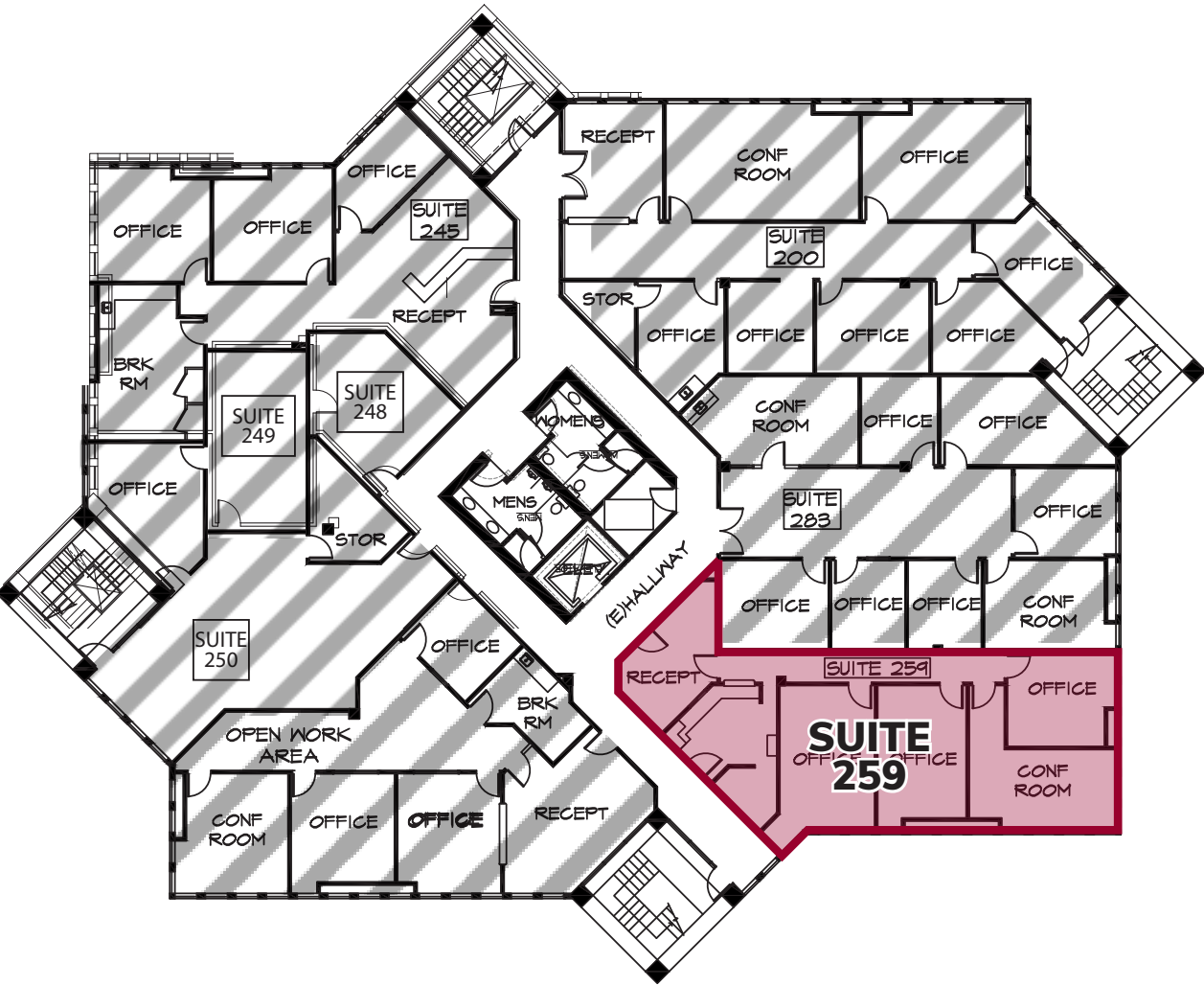


Lee & Associates® - Ontario

**GREG MARTIN**  
 Senior Vice President/Principal  
 D • 909.373.2904  
 E • gmartin@lee-assoc.com  
 DRE #01001749

3535 Inland Empire Blvd., Ontario, CA 91764 | 909.989.7771 | lee-assoc.com | Corp ID 00976995

# SECOND FLOOR FLOORPLAN



SUITE	SQUARE FEET	PRICE/ SQUARE FOOT	PRICE	LEASE RATE
200	±3,067			SOLD
245	±2,073			SOLD
247	±2,192			SOLD
250	±1,541			SOLD
259	±1,866	\$400	\$746,400	\$2.05 FSG
283	±2,445			SOLD

# SECOND FLOOR AVAILABILITY

**JEFF BISCHOFBERGER**  
 Senior Vice President/Principal  
 D • 909.373.2708  
 E • jbischof@lee-assoc.com  
 DRE #01512151



Lee & Associates® - Ontario

**GREG MARTIN**  
 Senior Vice President/Principal  
 D • 909.373.2904  
 E • gmartin@lee-assoc.com  
 DRE #01001749

3535 Inland Empire Blvd., Ontario, CA 91764 | 909.989.7771 | lee-assoc.com | Corp ID 00976995

All information furnished regarding property for sale, rental or financing is from sources deemed reliable, but no warranty or representation is made to the accuracy thereof and same is submitted to errors, omissions, change of price, rental or other conditions prior to sale, lease or financing or withdrawal without notice. No liability of any kind is to be imposed on the broker herein.

