



# OFFICE/WAREHOUSE FOR LEASE

9612 Titan Park Circle #2 | Littleton, CO 80125



## CONTACT:

**BRAD GILPIN**

SENIOR VICE PRESIDENT

303.512.1196

[bgilpin@uniqueprop.com](mailto:bgilpin@uniqueprop.com)

UNIQUE PROPERTIES

400 S. BROADWAY

DENVER, CO 80209

(p) 303.321.5888

(f) 303.321.5889

[WWW.UNIQUEPROP.COM](http://WWW.UNIQUEPROP.COM)



## 9612 TITAN PARK CIRCLE

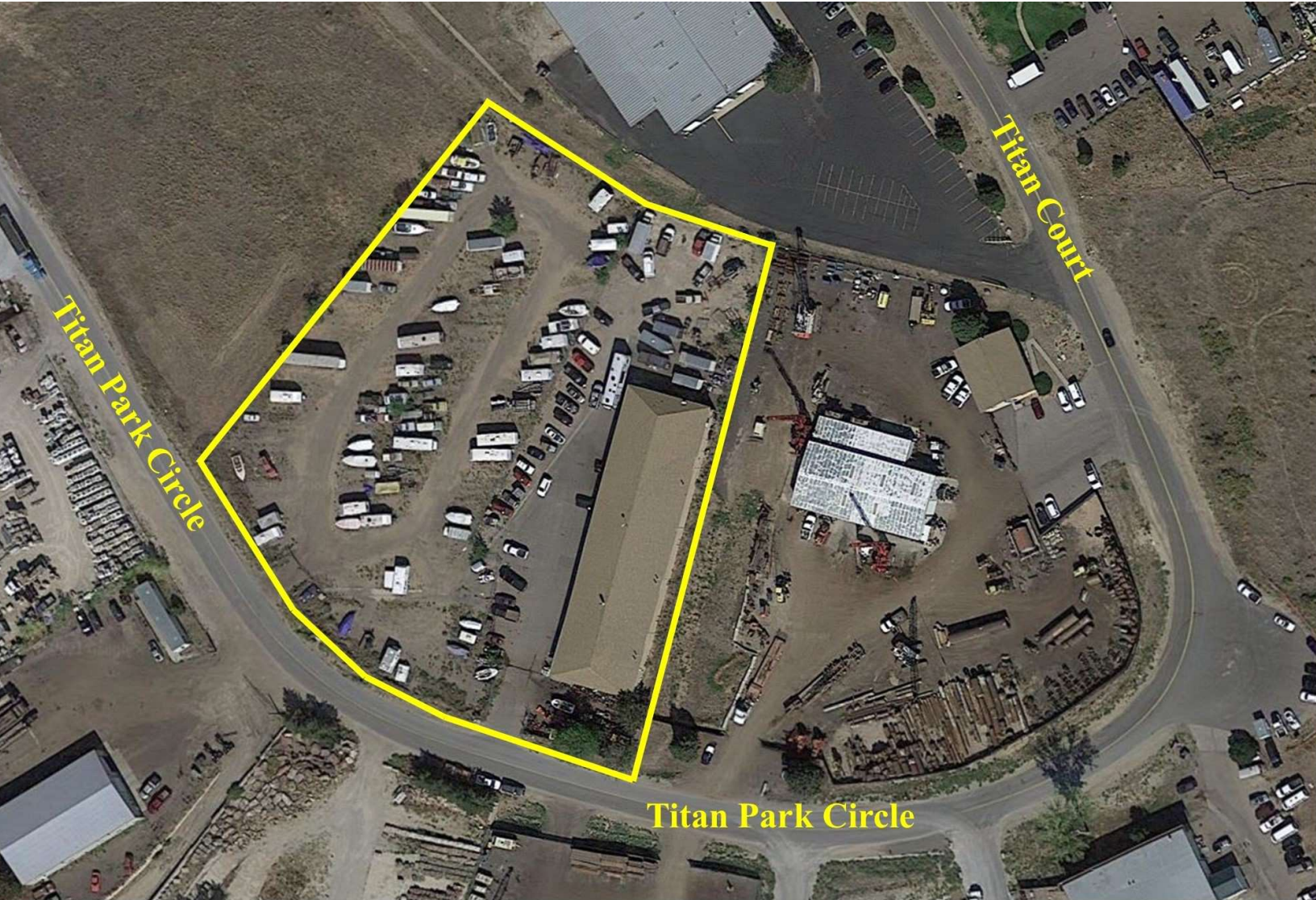
### OFFERING SUMMARY

<b>#2 Available:</b>	2,850 SF
<b>#2 Lease Rate:</b>	\$5,900/mth MG
<b>Building Size:</b>	14,640 SF
<b>Ceiling Height:</b>	16' clear
<b>Year Built:</b>	1995
<b>Zoning:</b>	G-1 Industrial

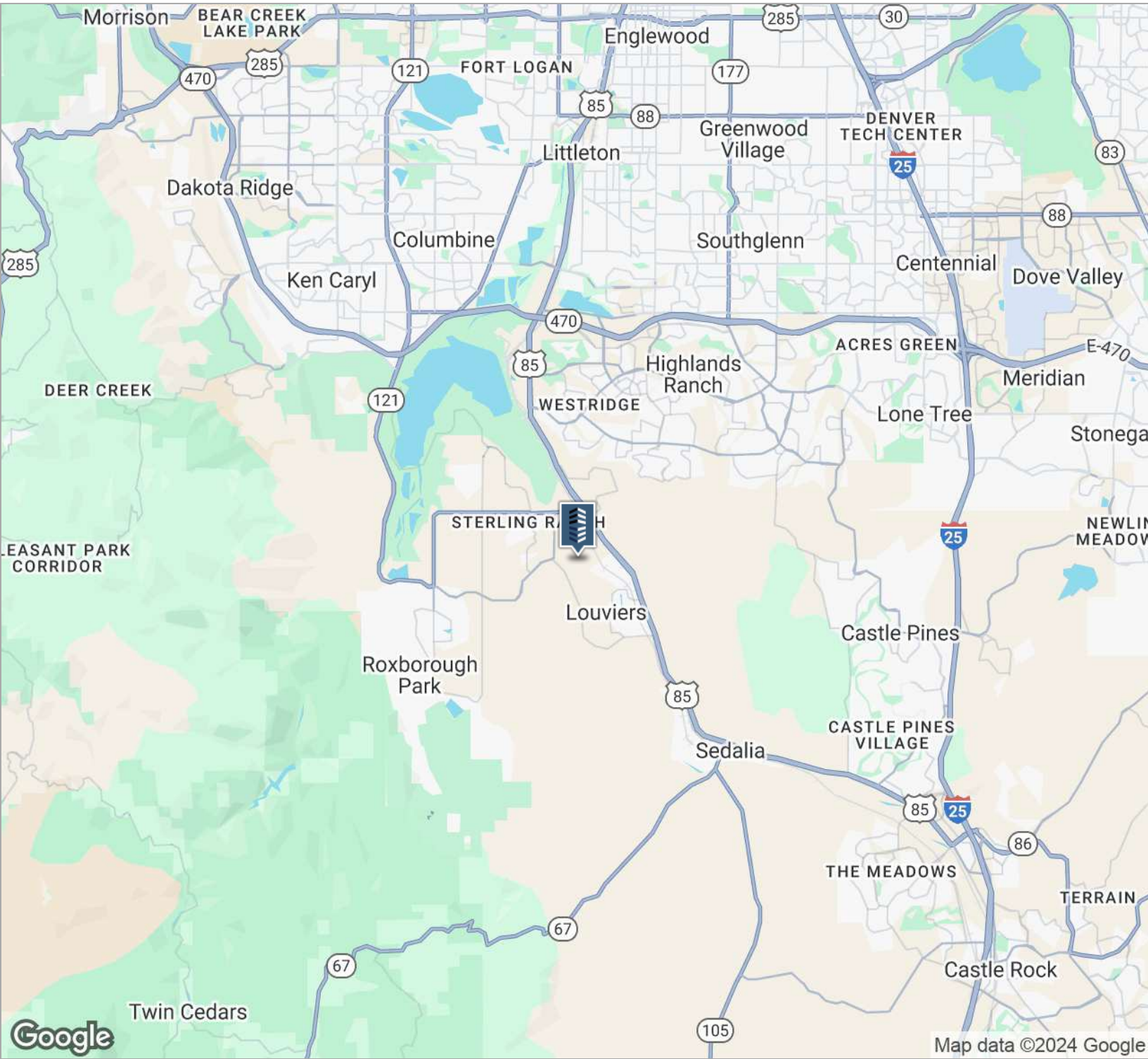
### PROPERTY HIGHLIGHTS

- 16' ceilings and 58' bay depth
- Located just a few minutes off West Titan Road and S. Santa Fe Drive
- UNIT #2 - approximately 2,850 SF total with a single office and two 14'x14'drive in doors
- Auto related uses considered.





# OFFICE/WAREHOUSE & YARD FOR LEASE



## CONTACT:

**BRAD GILPIN**  
 SENIOR VICE PRESIDENT  
 303.512.1196  
 bgilpin@uniqueprop.com

The information contained herein was obtained from sources believed reliable; however, Unique Properties makes no guarantees, warranties or representations as to the completeness or accuracy thereof. The presentation on this property is submitted subject to errors, omission, changes of price, or conditions, prior to sale or lease, or withdrawal without notice.