



Colliers

Accelerating success.

For Lease

Corporate Woods Business Park
Virginia Beach, VA

B. Gray Randolph, SIOR

Executive Vice President, Principal, Associate Broker
+1 757 228 1817
gray.randolph@colliers.com

150 W. Main St., Suite 1100
Norfolk, VA 23510
P: +1 757 490 3300
F: +1 757 490 1200
colliers.com/norfolk



Chadwick Building



Grayson Building

Property Overview

Corporate Woods Office Park is conveniently located in the heart of Virginia Beach, just minutes from I-264 and I-64, Norfolk International Airport, Downtown Norfolk, Chesapeake, the Virginia Beach Oceanfront, and less than 3 miles from The Town Center of Virginia Beach. All common areas have been recently renovated as well as the professional landscaping surrounding the property.

This award-winning office park is home to the Chadwick, Grayson, and Samuel White Law Buildings.

Features and Specifications

- Abundant parking available
- Easy interstate access
- Professional landscaping
- Building conference space available to all tenants in both buildings
- Adjacent to the Simon Family Jewish Community Center (JCC)
- All common areas have been recently renovated
- Three (3) to five (5) year lease terms available
- Less than 3 miles from The Town Center of Virginia Beach
- Attractive glass design, including two-story marble atrium

Chadwick

Rentable Areas (APPROX)

Suite C185	±1,321 RSF
Suite C200	±5,951 RSF
Suite C225	±10,315 RSF
Suite C230	±2,551 RSF
Suite C301	±4,925 RSF

Basic Lease Rate

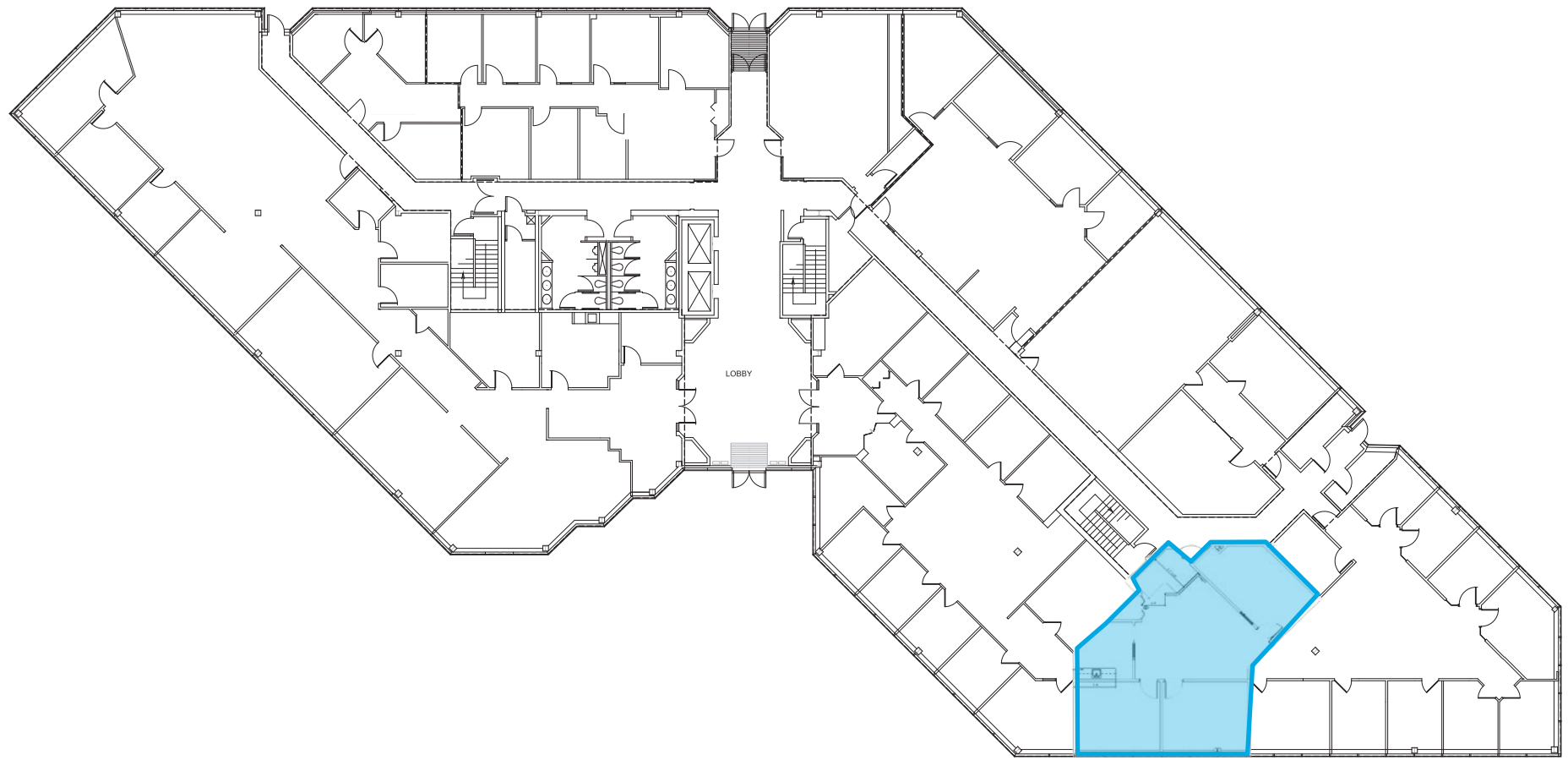
\$19.50 per RSF, FS



CHADWICK BUILDING

FIRST FLOOR

- Suite C185 ± 1,321 RSF



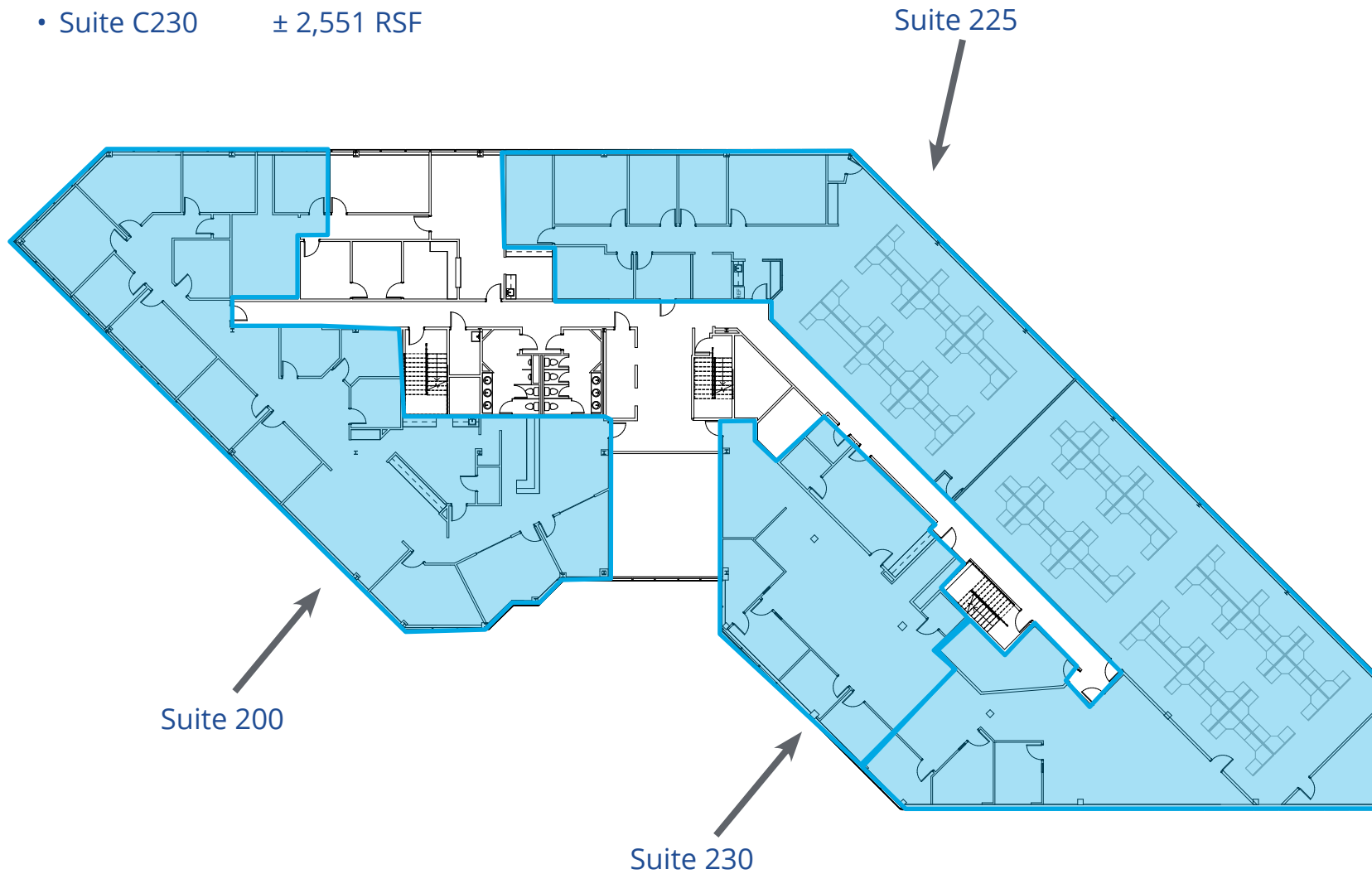
Suite 185



CHADWICK BUILDING

SECOND FLOOR

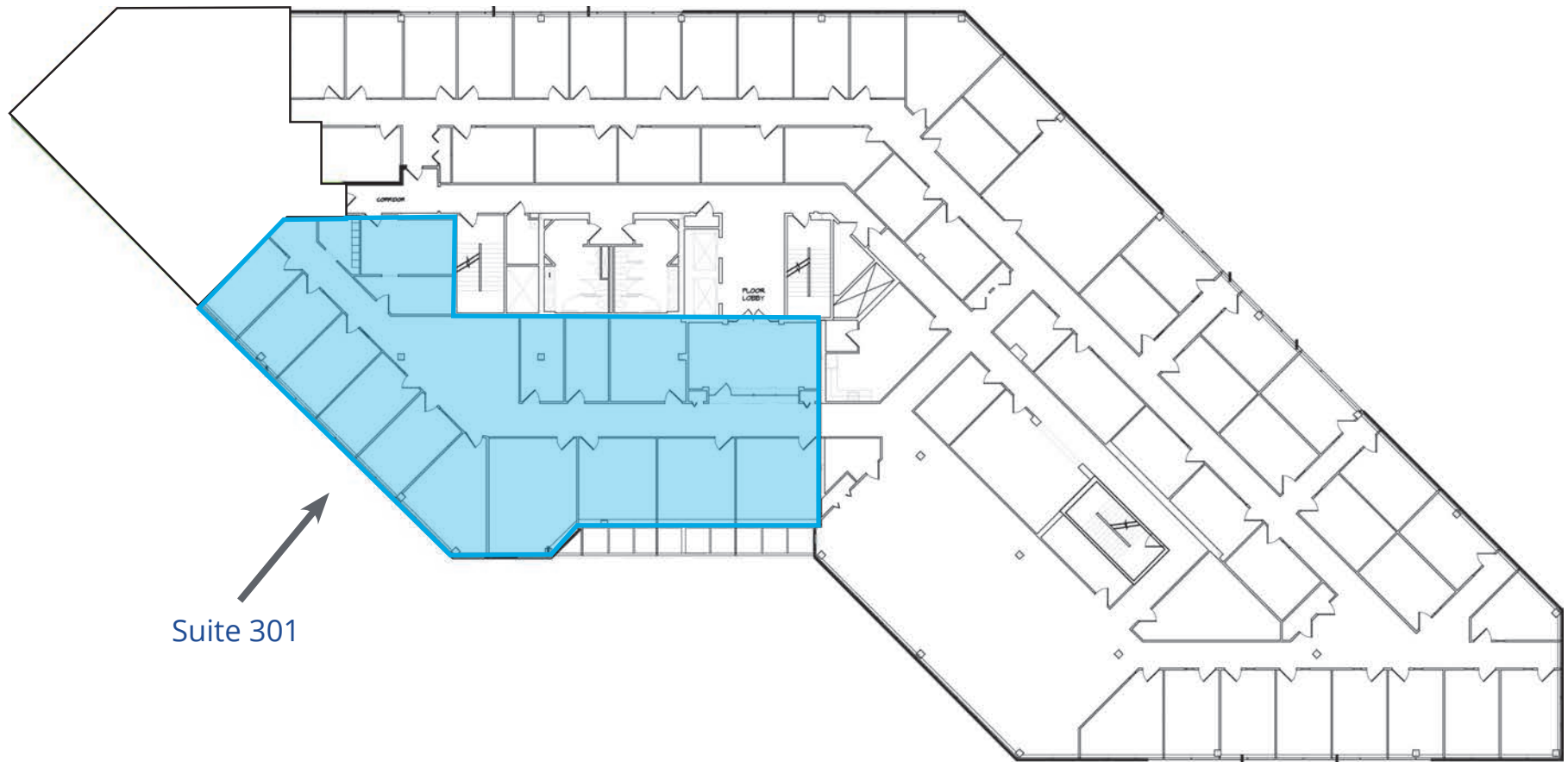
- Suite C200 ± 5,951 RSF
- Suite C225 ± 10,315 RSF
- Suite C230 ± 2,551 RSF



CHADWICK BUILDING

THIRD FLOOR

- Suite C301 ± 4,925 RSF



Grayson

Rentable Areas

Suite G100

±1,793 RSF

Basic Lease Rate

\$19.50 per RSF, FS



GRAYSON BUILDING

FIRST FLOOR

- Suite G100 ± 1,793 RSF

