

Corporate Headquarters Office | For Lease

**CBRE**

# ±13,337 SF Freestanding Office Building



Video Tour



Matterport Tour

17941 Fitch,  
Irvine, CA 92614





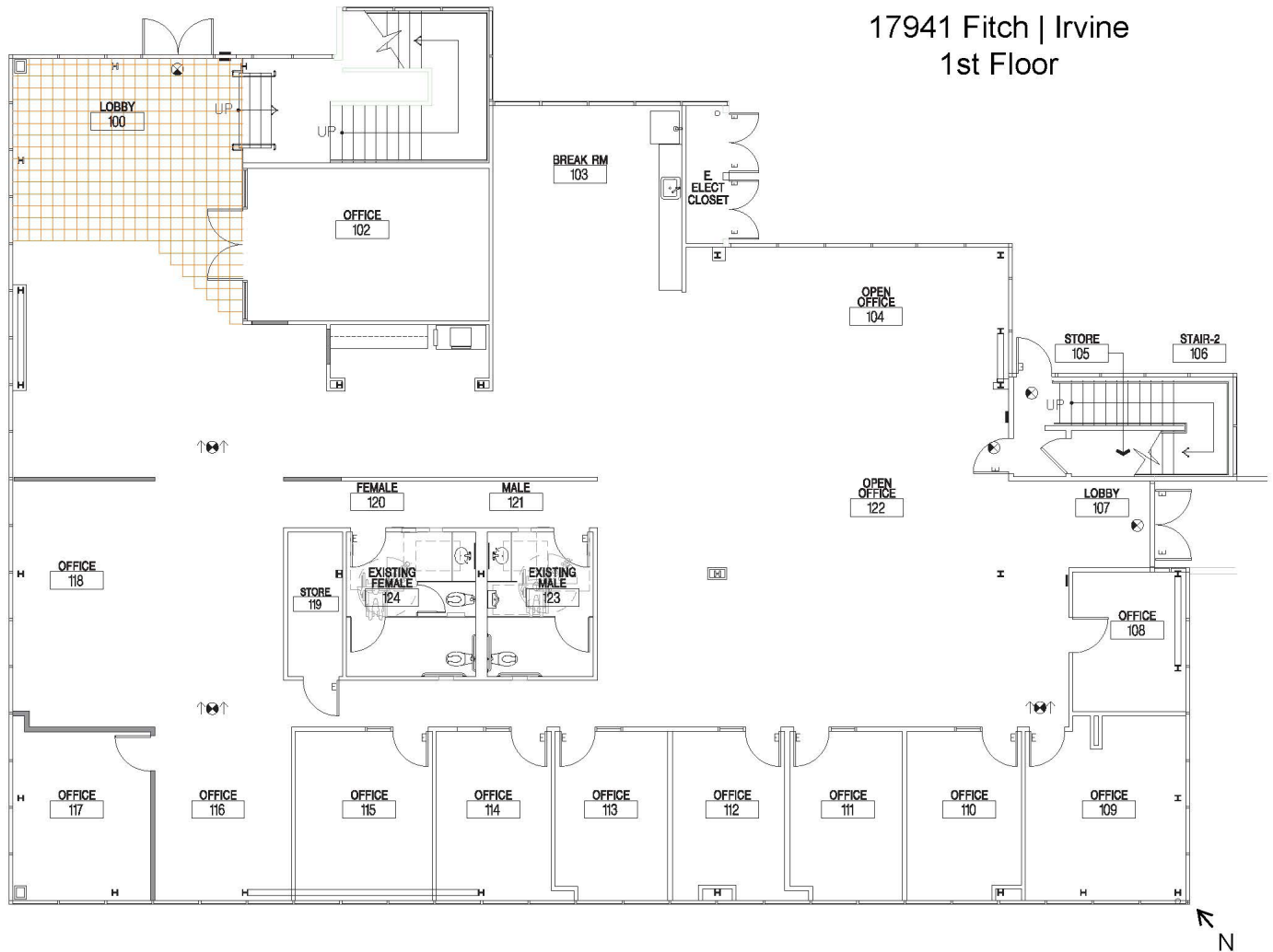
**17941 Fitch**  
Irvine, CA 92614



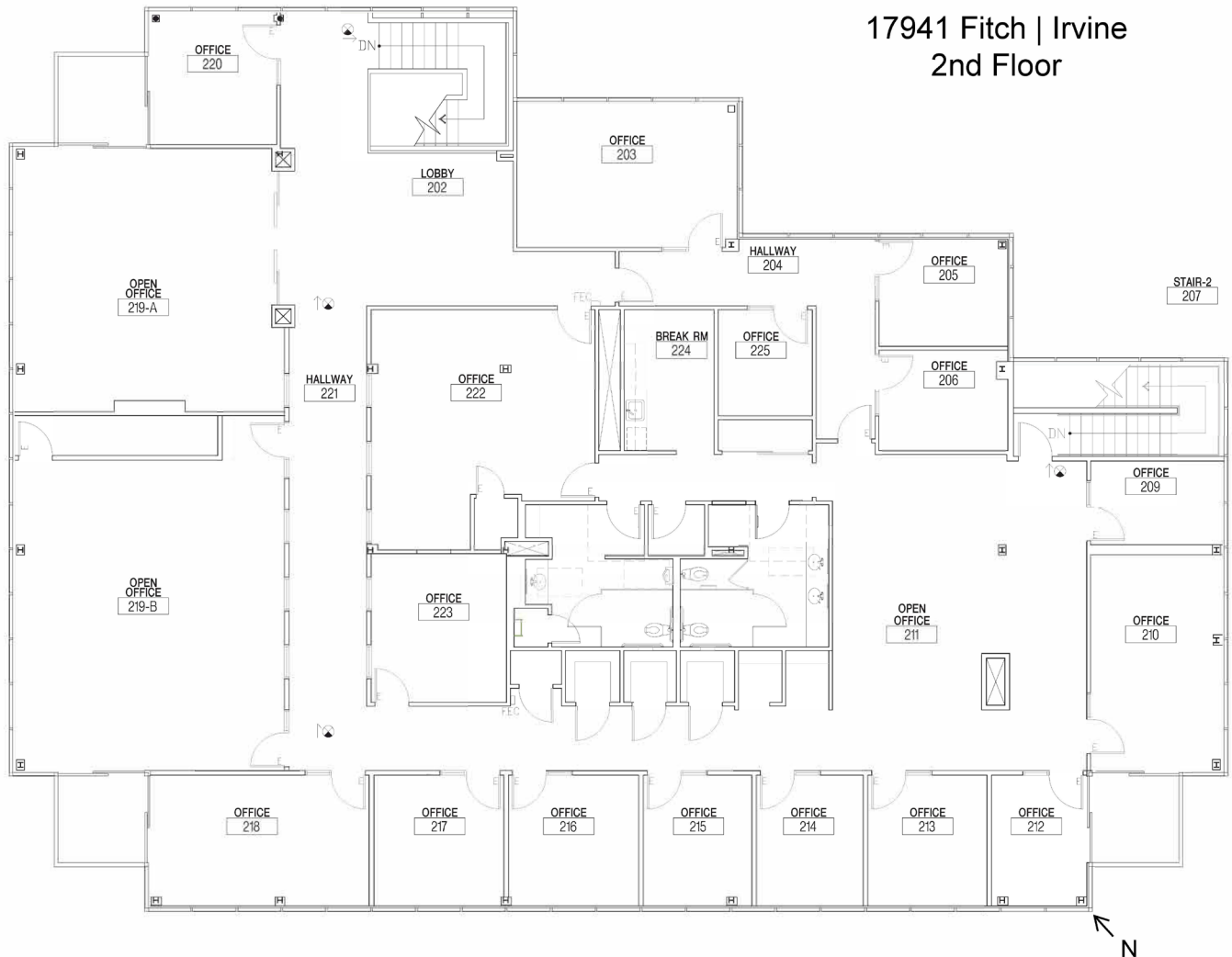
# Property Features

- + 1st floor completely renovated
- + High-image, freestanding, 2-story building
- + Ideal for corporate headquarters
- + Corner location (Fitch and Mitchell)
- + Monument signage on corner
- + AT&T fiber-ready building
- + 5 minutes from John Wayne Airport
- + Immediate access to San Diego 405 Freeway, Costa Mesa 55 Freeway, and Corona Del Mar 73 Freeway
- + Free surface parking
- + Close to restaurants, banks, hotels, and health clubs
- + High-identity signage on both Fitch and Mitchell
- + Located in the prestigious Park Redhill area
- + Close to world-class shopping at South Coast Plaza

# First Floor



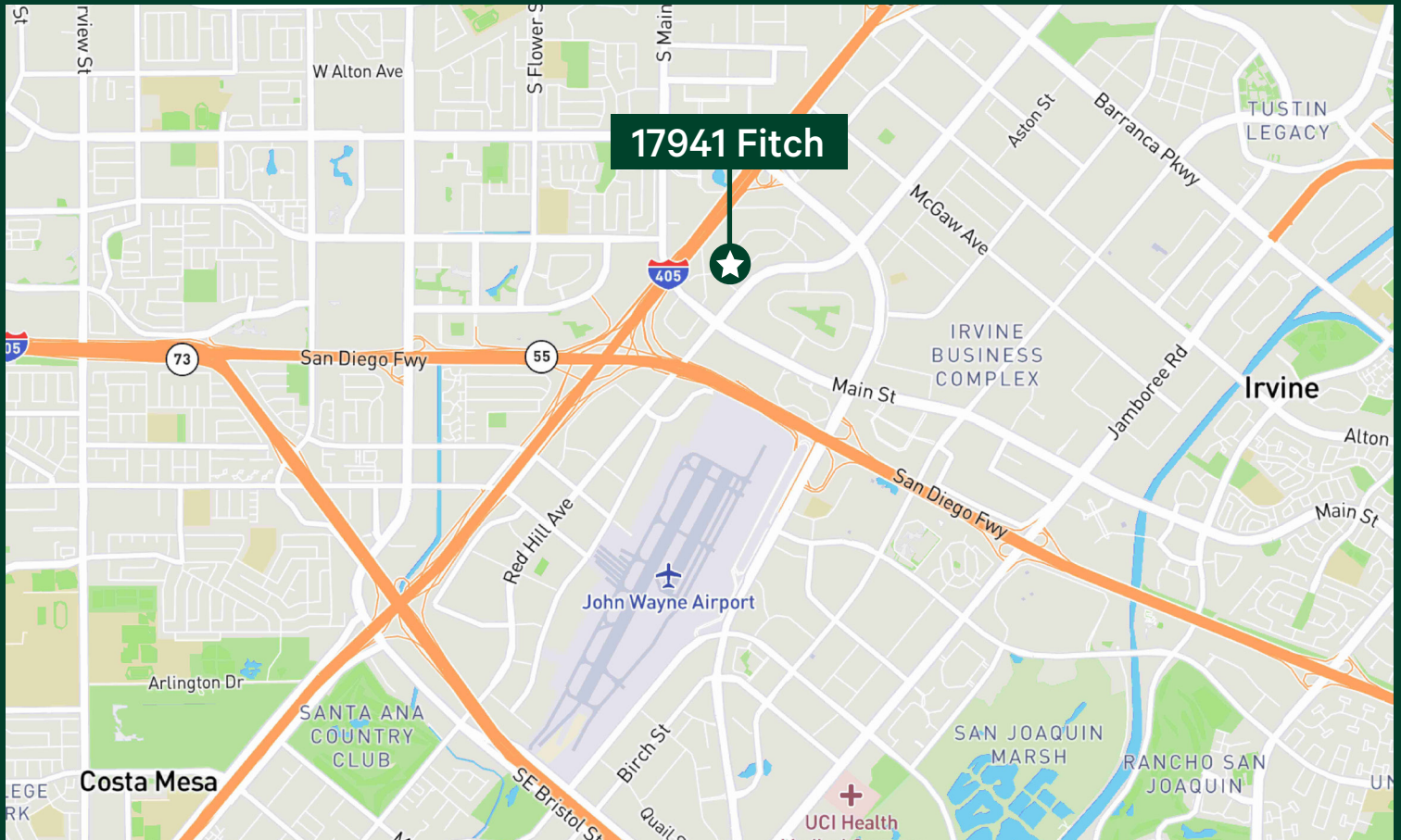
# Second Floor





For Lease

# Street View



## Property Interior Photos





17941 Fitch  
Irvine, CA 92614

For Lease

# Aerial View



## Contact Us

### Tom Abel

First Vice President  
+1 714 371 9255  
tom.abel@cbre.com  
Lic. 00985659

### Tom McAllister

First Vice President  
+1 714 371 9215  
tom.mcallister@cbre.com  
Lic. 00711784

© 2025 CBRE, Inc. All rights reserved. This information has been obtained from sources believed reliable, but has not been verified for accuracy or completeness. You should conduct a careful, independent investigation of the property and verify all information. Any reliance on this information is solely at your own risk. CBRE and the CBRE logo are service marks of CBRE, Inc. All other marks displayed on this document are the property of their respective owners, and the use of such logos does not imply any affiliation with or endorsement of CBRE. Photos herein are the property of their respective owners. Use of these images without the express written consent of the owner is prohibited.