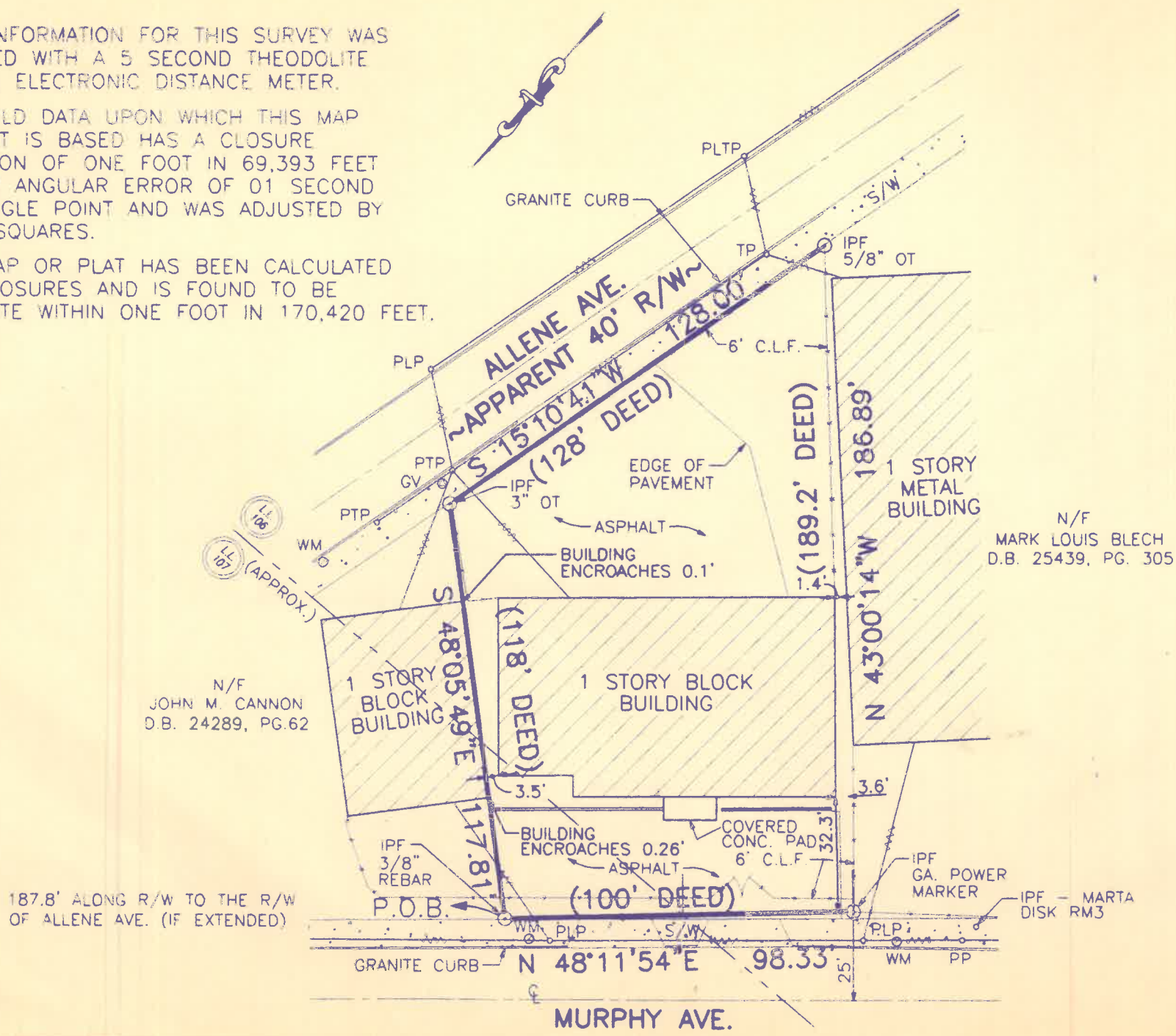


NOTES:

FIELD INFORMATION FOR THIS SURVEY WAS OBTAINED WITH A 5 SECOND THEODOLITE AND AN ELECTRONIC DISTANCE METER.

THE FIELD DATA UPON WHICH THIS MAP OR PLAT IS BASED HAS A CLOSURE PRECISION OF ONE FOOT IN 69,393 FEET AND AN ANGULAR ERROR OF 01 SECOND PER ANGLE POINT AND WAS ADJUSTED BY LEAST SQUARES.

THIS MAP OR PLAT HAS BEEN CALCULATED FOR CLOSURES AND IS FOUND TO BE ACCURATE WITHIN ONE FOOT IN 170,420 FEET.



N/F
JOHN M. CANNON
D.B. 24289, PG.62

N/F
MARK LOUIS BLECH
D.B. 25439, PG. 305

187.8' ALONG R/W TO THE R/W OF ALLENE AVE. (IF EXTENDED)

CENTRAL OF GA. R.R.

AREA = 0.365 ACRES

THIS PROPERTY DOES NOT LIE WITHIN A FEDERAL FLOOD HAZARD AREA AS PER PANEL NO. 13121C0356 E



IN MY OPINION THIS PLAT IS A CORRECT REPRESENTATION OF THE LAND PLATTED AND HAS BEEN PREPARED IN CONFORMITY WITH THE MINIMUM STANDARDS AND REQUIREMENTS OF THE LAW

LEGEND	
A	ARC
R	RADIUS
C	CHORD
R/W	RIGHT OF WAY
N/F	ADJOINING OWNERSHIP
IPS	IRON PIN SET
IPF	IRON PIN FOUND
OT	OPEN TOP PIPE
CONC.	CONCRETE
RCP	REINFORCED CONCRETE PIPE
CMP	CORRUGATED METAL PIPE
SSMH	SANITARY SEWER MANHOLE
WV	WATER VALVE
GV	GAS VALVE
WM	WATER METER
C.L.F.	CHAIN LINK FENCE
S/W	SIDEWALK
FH	FIRE HYDRANT
JB	JUNCTION BOX
TP	TELEPHONE POLE
LP	LIGHT POLE
PP	POWER POLE
D.B.	DEED BOOK
PG.	PAGE
P.O.B.	POINT OF BEGINNING
---	OVERHEAD POWER LINE

SURVEY FOR: CHRISTOPHER BARBER THE BUSINESS DEVELOPMENT CORP. OF GEORGIA, INC. & CHICAGO TITLE INSURANCE COMPANY		
DATE: 04-26-01	LAND LOT: 106 & 107 DISTRICT: 14TH	DRAWN BY: GSG
SCALE: 1"=40'	COUNTY: FULTON SURVEYED BY: TL	REV. 4-27-01 ADDED LAND LOT LINE
ADAM & LEE LAND SURVEYING 5640 GA. HWY. 20 S. LOGANVILLE, GA. 30052 (770) 554-8995		
892 MURPHY AVE. D.B.26655,PG. 201		01059