

1100 SCHWAB ROAD

Hatfield, PA 19440



FOR SUBLEASE



INDUSTRIAL



125,000 SF



PROPERTY DESCRIPTION

- Space Available: 125,000± SF for sublease
- Building Size: 301,131± SF production and warehouse facility
- Acreage: 18.98 acres
- Year Built: 1982 and 1985. Block, steel and concrete panel
- Office Area: 500±- SF
- Loading: 8 loading docks with levelers, 2 drive in bays
- Parking: More than ample car parking and additional area for truck staging
- Ceiling height: 18' to 20' in warehouse
- Floor: 6" reinforced concrete slab
- Rail: Pennsylvania Northeastern Railroad Spur to the property
- Zoning: LI- Light Industrial
- Utilities: Public water, sewer, PECO electric and gas
- Power: 3 Phase service, 1,000 Amps, 208/240 volt
- Taxes: \$237,870.03 (2025)



FOR MORE INFORMATION

Jeffrey Licht, SIOR

☎ 215.396.2900 x101

✉ bucks@naimertz.com

Jared Licht

☎ 215.396.2900 x105

✉ licht@naimertz.com

NAI MERTZ DISCLAIMER: NO WARRANTY OR REPRESENTATION, EXPRESS OR IMPLIED, IS MADE AS TO THE ACCURACY OF THE INFORMATION CONTAINED HEREIN, AND THE SAME IS SUBMITTED SUBJECT TO ERRORS, OMISSIONS, CHANGE OF PRICE, RENTAL OR OTHER CONDITIONS, PRIOR SALE, LEASE OR FINANCING, OR WITHDRAWAL WITHOUT NOTICE, AND OF ANY SPECIAL LISTING CONDITIONS IMPOSED BY OUR PRINCIPALS. NO WARRANTIES OR REPRESENTATIONS ARE MADE AS TO THE CONDITION OF THE PROPERTY OR ANY HAZARDS CONTAINED THEREIN ARE ANY TO BE IMPLIED. OUTLINES ARE APPROXIMATE AND SHOWN ONLY TO IDENTIFY THE PARCEL IN CONSIDERATION.

NAIMertz



NAI Mertz | 210 E. Street Road, Suite 3B

Feasterville-Trevose, PA 19053

215-396-2900 | naimertz.com



1100 SCHWAB ROAD

Hatfield, PA 19440



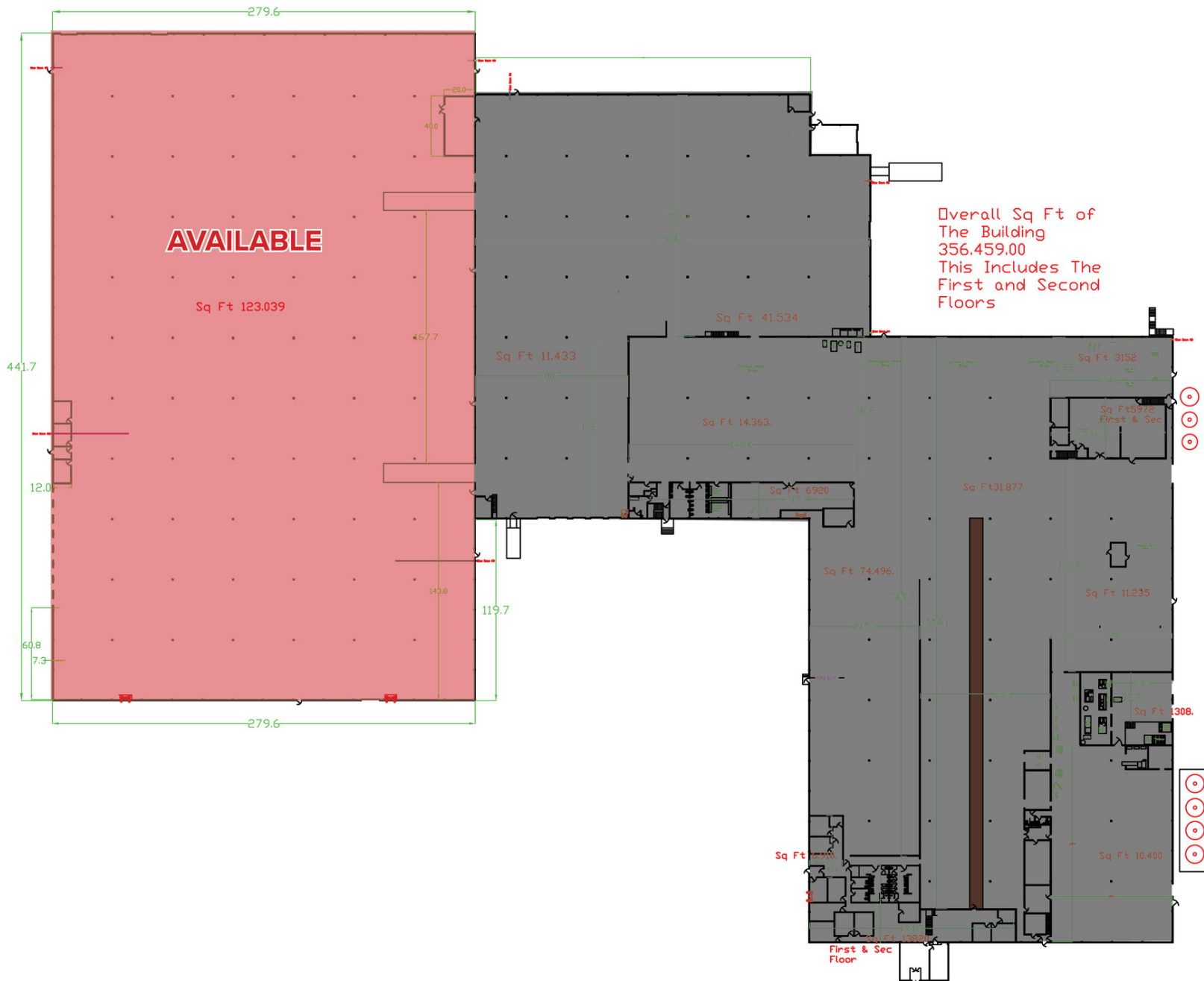
FOR SUBLEASE



INDUSTRIAL



301,131 SF



FOR MORE INFORMATION

Jeffrey Licht, SIOR

☎ 215.396.2900 x101

✉ bucks@naimertz.com

Jared Licht

☎ 215.396.2900 x105

✉ licht@naimertz.com

NAI MERTZ DISCLAIMER: NO WARRANTY OR REPRESENTATION, EXPRESS OR IMPLIED, IS MADE AS TO THE ACCURACY OF THE INFORMATION CONTAINED HEREIN, AND THE SAME IS SUBMITTED SUBJECT TO ERRORS, OMISSIONS, CHANGE OF PRICE, RENTAL OR OTHER CONDITIONS, PRIOR SALE, LEASE OR FINANCING, OR WITHDRAWAL WITHOUT NOTICE, AND OF ANY SPECIAL LISTING CONDITIONS IMPOSED BY OUR PRINCIPALS. NO WARRANTIES OR REPRESENTATIONS ARE MADE AS TO THE CONDITION OF THE PROPERTY OR ANY HAZARDS CONTAINED THEREIN ARE ANY TO BE IMPLIED. OUTLINES ARE APPROXIMATE AND SHOWN ONLY TO IDENTIFY THE PARCEL IN CONSIDERATION.

NAIMertz



NAI Mertz | 210 E. Street Road, Suite 3B

Feasterville-Trevose, PA 19053

215-396-2900 | naimertz.com



1100 SCHWAB ROAD

1100 Schwab Road Hatfield, PA 19440



FOR SUBLEASE



INDUSTRIAL



301,131 SF



FOR MORE INFORMATION

Jeffrey Licht, SIOR

☎ 215.396.2900 x101

✉ bucks@naimertz.com

Jared Licht

☎ 215.396.2900 x105

✉ licht@naimertz.com

NAI MERTZ DISCLAIMER: NO WARRANTY OR REPRESENTATION, EXPRESS OR IMPLIED, IS MADE AS TO THE ACCURACY OF THE INFORMATION CONTAINED HEREIN, AND THE SAME IS SUBMITTED SUBJECT TO ERRORS, OMISSIONS, CHANGE OF PRICE, RENTAL OR OTHER CONDITIONS, PRIOR SALE, LEASE OR FINANCING, OR WITHDRAWAL WITHOUT NOTICE, AND OF ANY SPECIAL LISTING CONDITIONS IMPOSED BY OUR PRINCIPALS. NO WARRANTIES OR REPRESENTATIONS ARE MADE AS TO THE CONDITION OF THE PROPERTY OR ANY HAZARDS CONTAINED THEREIN ARE ANY TO BE IMPLIED. OUTLINES ARE APPROXIMATE AND SHOWN ONLY TO IDENTIFY THE PARCEL IN CONSIDERATION.

NAI Mertz



NAI Mertz | 210 E. Street Road, Suite 3B

Feasterville-Trevose, PA 19053

215-396-2900 | naimertz.com



1100 SCHWAB ROAD

Hatfield, PA 19440



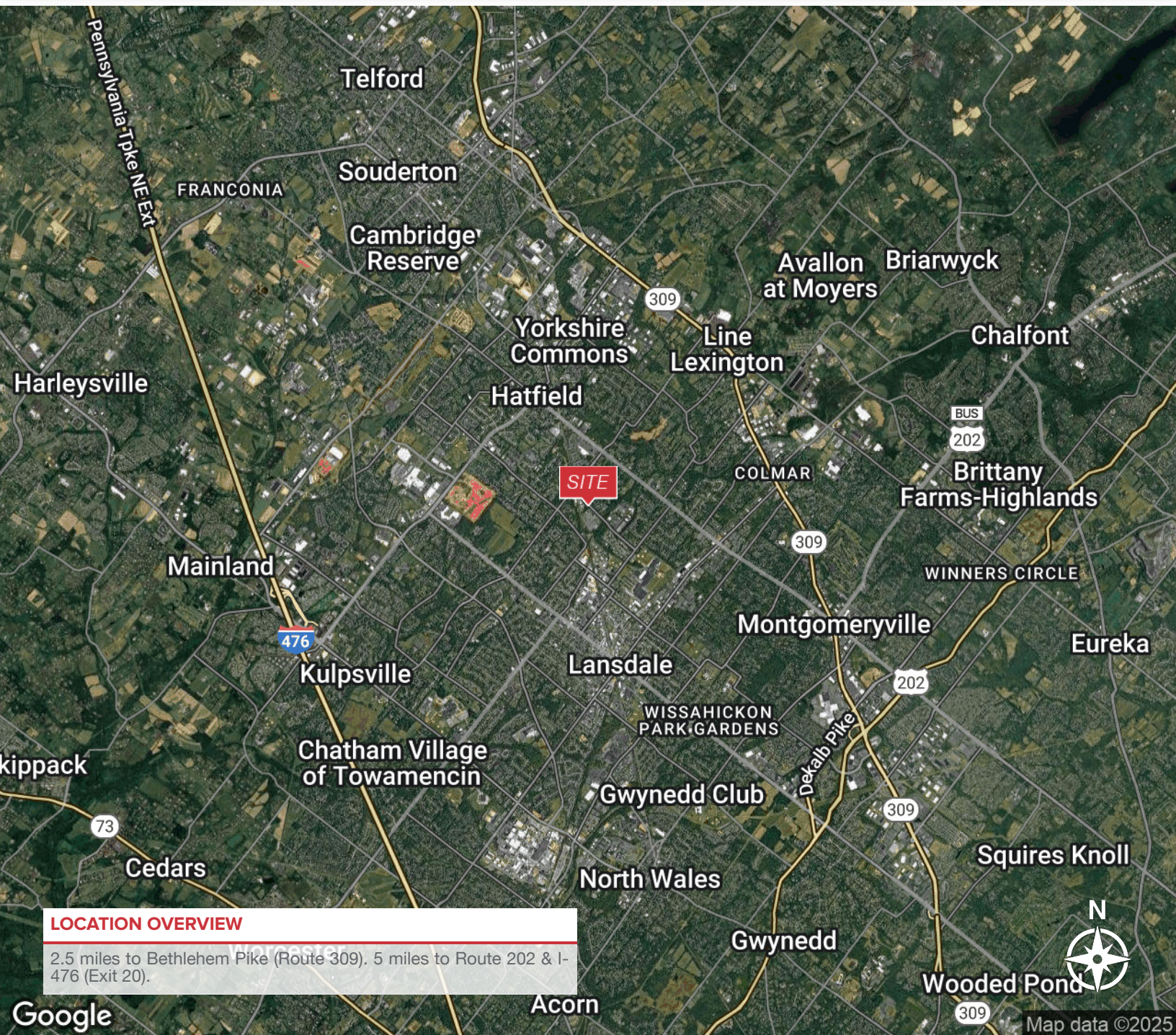
FOR SUBLEASE



INDUSTRIAL



125,000 SF



LOCATION OVERVIEW

2.5 miles to Bethlehem Pike (Route 309). 5 miles to Route 202 & I-476 (Exit 20).

FOR MORE INFORMATION

Jeffrey Licht, SIOR

☎ 215.396.2900 x101

✉ bucks@naimertz.com

Jared Licht

☎ 215.396.2900 x105

✉ licht@naimertz.com

NAI MERTZ DISCLAIMER: NO WARRANTY OR REPRESENTATION, EXPRESS OR IMPLIED, IS MADE AS TO THE ACCURACY OF THE INFORMATION CONTAINED HEREIN, AND THE SAME IS SUBMITTED SUBJECT TO ERRORS, OMISSIONS, CHANGE OF PRICE, RENTAL OR OTHER CONDITIONS, PRIOR SALE, LEASE OR FINANCING, OR WITHDRAWAL WITHOUT NOTICE, AND OF ANY SPECIAL LISTING CONDITIONS IMPOSED BY OUR PRINCIPALS. NO WARRANTIES OR REPRESENTATIONS ARE MADE AS TO THE CONDITION OF THE PROPERTY OR ANY HAZARDS CONTAINED THEREIN ARE ANY TO BE IMPLIED. OUTLINES ARE APPROXIMATE AND SHOWN ONLY TO IDENTIFY THE PARCEL IN CONSIDERATION.

NAI Mertz



NAI Mertz | 210 E. Street Road, Suite 3B

Feasterville-Treves, PA 19053

215-396-2900 | naimertz.com

