

# 54 JEFF ADACHI WAY

FOR LEASE | FLEX / OFFICE BUILDING W/ GARAGE

**TCP**  
**TOUCHSTONE**  
COMMERCIAL PARTNERS



[WWW.TCPRE.COM](http://WWW.TCPRE.COM)

**JARON ELIOPOULOS**

C 415.608.6336  
[jaron@tcpre.com](mailto:jaron@tcpre.com)

**ZACH HAUPERT**

C 415.539.1121  
[zhaupert@tcpre.com](mailto:zhaupert@tcpre.com)

**CAMERON TU**

C 510.919.8193  
[cameron@tcpre.com](mailto:cameron@tcpre.com)

**MICHAEL SANBERG**

C 415.697.6088  
[msanberg@tcpre.com](mailto:msanberg@tcpre.com)



## PROPERTY SUMMARY

### ADDRESS

54 Jeff Adachi Way, San Francisco, CA 94103

### AVAILABLE SPACE

+/- 4,700 Square Feet

### RENTAL RATE

\$36 / Square Foot / Year, IG

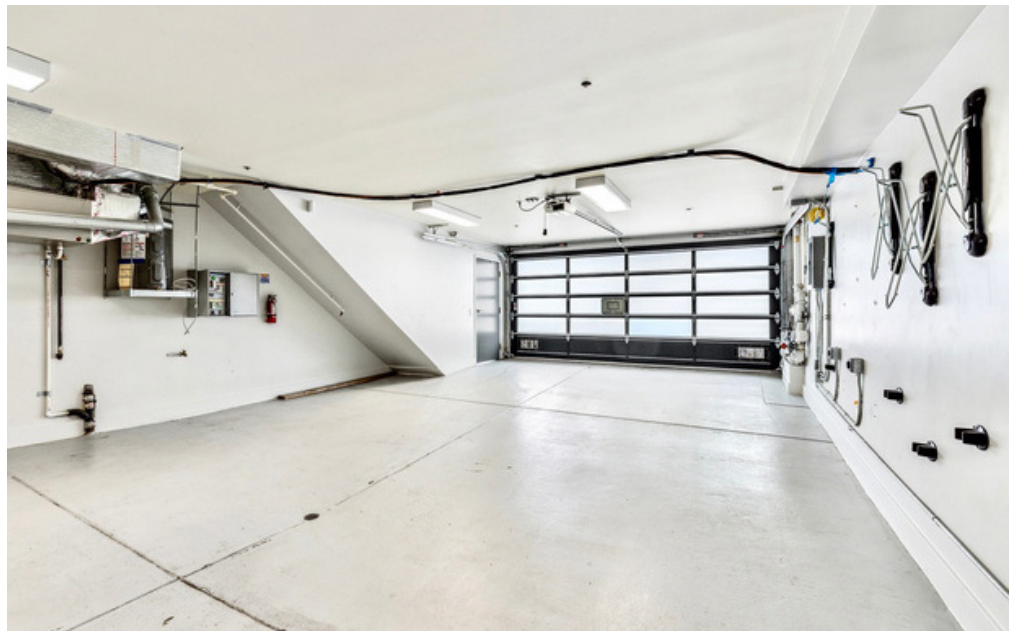
### AVAILABLE

Immediately

## BUILDING ATTRIBUTES

- + 4 Car Garage
- + Skylights and Excellent Natural Light
- + 2 Private Offices
- + 1 Conference Room
- + Kitchenette
- + 4 Restrooms
- + Outdoor Patio
- + HVAC





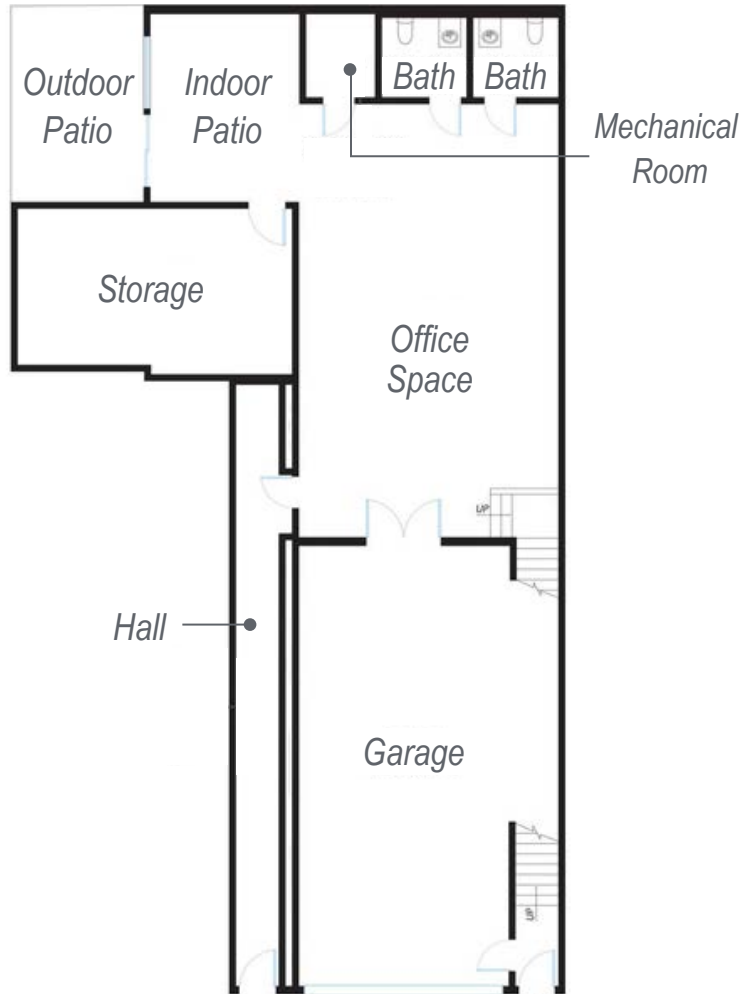


# 54 JEFF ADACHI WAY

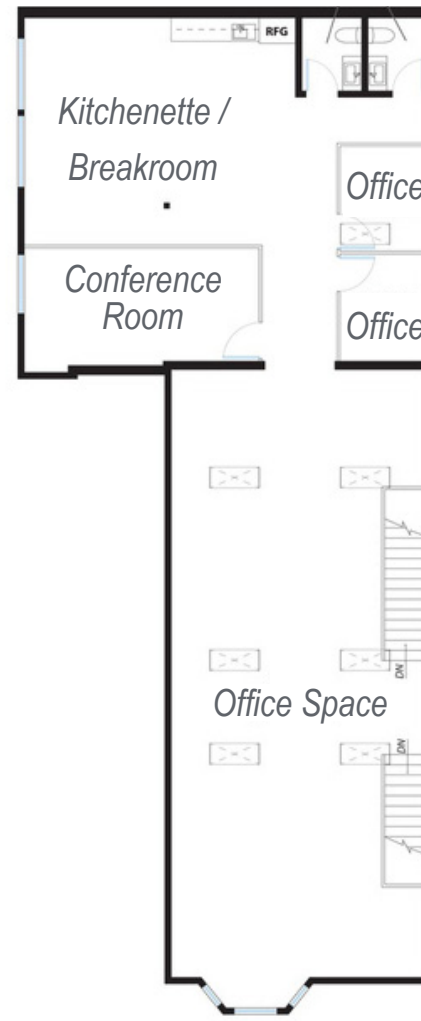
## FLOOR PLAN

+/- 4,700 Square Feet

### GROUND FLOOR



### SECOND FLOOR



JEFF ADACHI WAY

## LOCATION OVERVIEW

Desirable South of Market location, walkable to nearby amenities, public transportation and to surrounding neighborhoods.



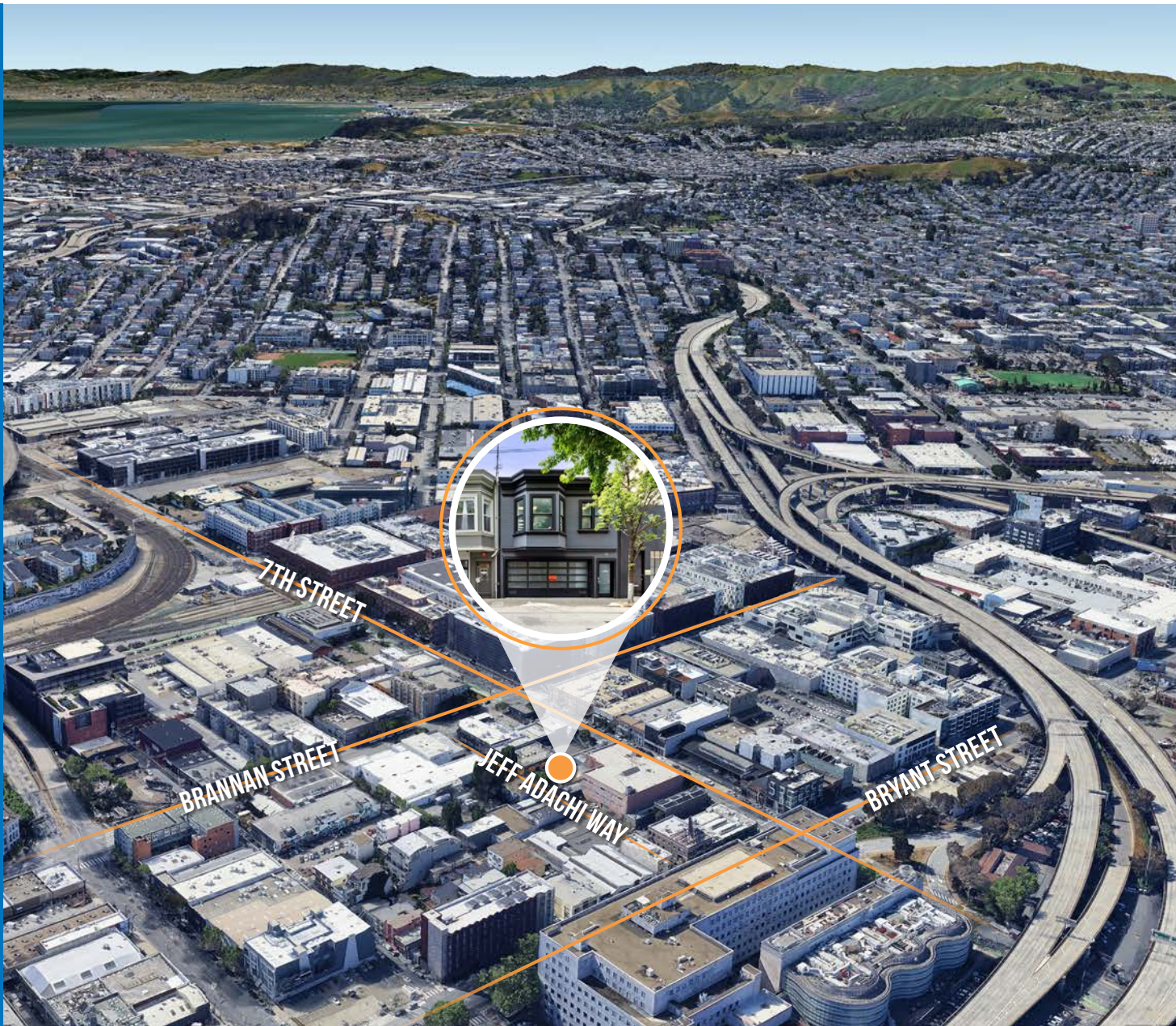
**13 MIN** to 4th St Rail Muni  
**15 MIN** to SF Caltrain Station  
**18 MIN** to Civic Center Bart



**07 MIN** to Chase Center  
**11 MIN** to Mission District  
**16 MIN** to Financial District



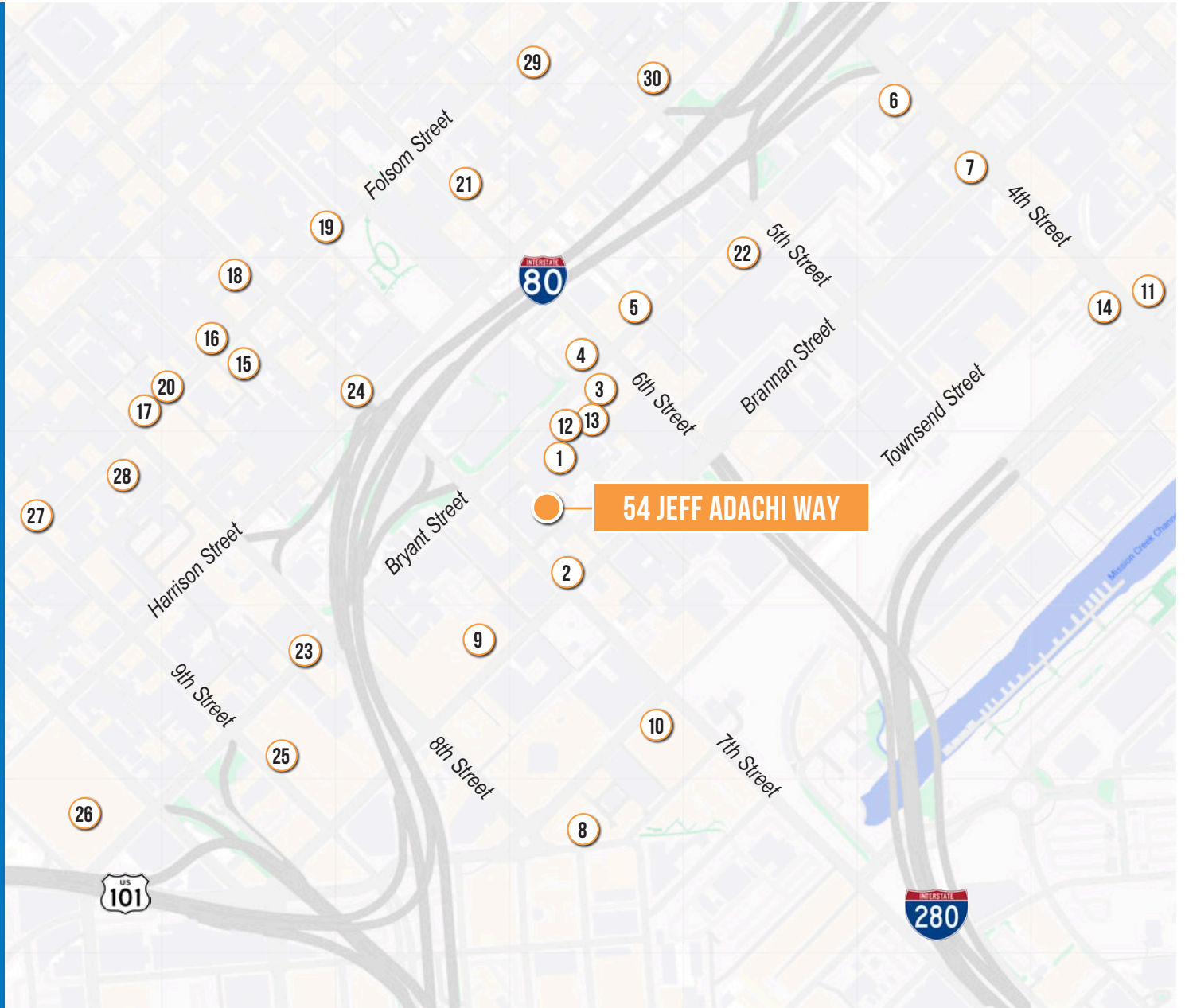
**01 MIN** to 280 On-Ramp  
**02 MIN** to 80 On-Ramp  
**05 MIN** to 101 On-Ramp





## NEARBY AMENITIES

- 1..... Dinosaurs Sandwiches
- 2..... Mars Bar & Restaurant
- 3..... El Norteño Taco Truck
- 4..... Social Cafe
- 5..... Hard Knox Cafe SoMa
- 6..... Thriller Social Club
- 7..... Marlowe
- 8..... Saap Ver Damn Good! Thai
- 9..... Hall Of Justice
- 10..... Adobe - San Francisco
- 11..... Safeway
- 12..... Kiss My Seoul
13. Question Mark Bar & Restaurant
- 14... San Francisco CalTrain Station
- 15..... Rocco's Cafe
- 16..... HK Lounge Bistro
- 17..... Cat Club
- 18..... Sightglass Coffee
- 19..... Deli Board
- 20..... Bay of Burma
- 21..... Telescope Coffee
- 22..... Jane's Roses & Flowers
- 23..... Beyond Cafe
- 24..... Yossie's Cantina
- 25..... Trader Joe's
- 26..... Costco Wholesale
- 27..... Azúcar Lounge
- 28..... Driftwood
- 29..... The Roll
- 30..... All Stars Donuts









54 JEFF  
ADACHI  
WAY



**TCP**  
**TOUCHSTONE**  
COMMERCIAL PARTNERS

Corp. Lic. 01112906  
www.tcpre.com

**JARON ELIOPOULOS** DRE # 01975155  
415.608.6336 | jaron@tcpre.com

**ZACH HAUPPERT** DRE # 01822907  
415.539.1121 | zhaupert@tcpre.com

**CAMERON TU** DRE # 02100436  
510.919.8193 | cameron@tcpre.com

**MICHAEL SANBERG** DRE # 01930041  
415.697.6088 | msanberg@tcpre.com

The information presented has been secured from sources we believe to be reliable but we make no representations or warranties, expressed or implied, as to the accuracy of the information. Lessee must verify the information and bears all risk for any inaccuracies.