

# FOR SALE

**KPA**  
COMMERCIAL

## 3565 CHARTER PARK DR SAN JOSE, CA

### Project Summary:

Building Size:  $\pm$ 20,666 SF

Land Size:  $\pm$ 1.05 AC ( $\pm$ 45,738 SF)

APN: 462-60-005 / Year Built: 1992

Zoning: IP – Industrial Park

DO NOT Disturb Occupant, Call to Schedule Tour

Heavy Power: 2,000 amps @ 277/480 volts

Price: \$7,853,080 / \$380 per sf

### Project Features:

Stand Alone Manufacturing Building

Insulated / Sprinklered Warehouse

Potentially Divisible / Updated Office Improvements

3" Gas Line / 16-17' Clear Height

Solar Panel System Included in Sale

Parking: 58 spaces / 2.8 per 1,000 SF Ratio

Easy Access to Highway 87 and 82

For more information, please contact:

**KEVIN PEIXOTO**

kevin@kpacommercial.com

O. 408.557.0167 / C. 408.898.0177

CalDRE Lic. No. 01411086 / CalDRE Corp. Lic. No. 02035384

[www.kpacommercial.com](http://www.kpacommercial.com)

The information contained herein was obtained from sources believed reliable; however, KPA Commercial, Inc. and its agents make no guarantee, warranty or representation, either expressed or implied, as to the completeness or accuracy thereof. The presentation of this property is submitted subject to errors, omissions, change of price or conditions prior to sale or lease, or withdrawal without notice.

# PHOTOS



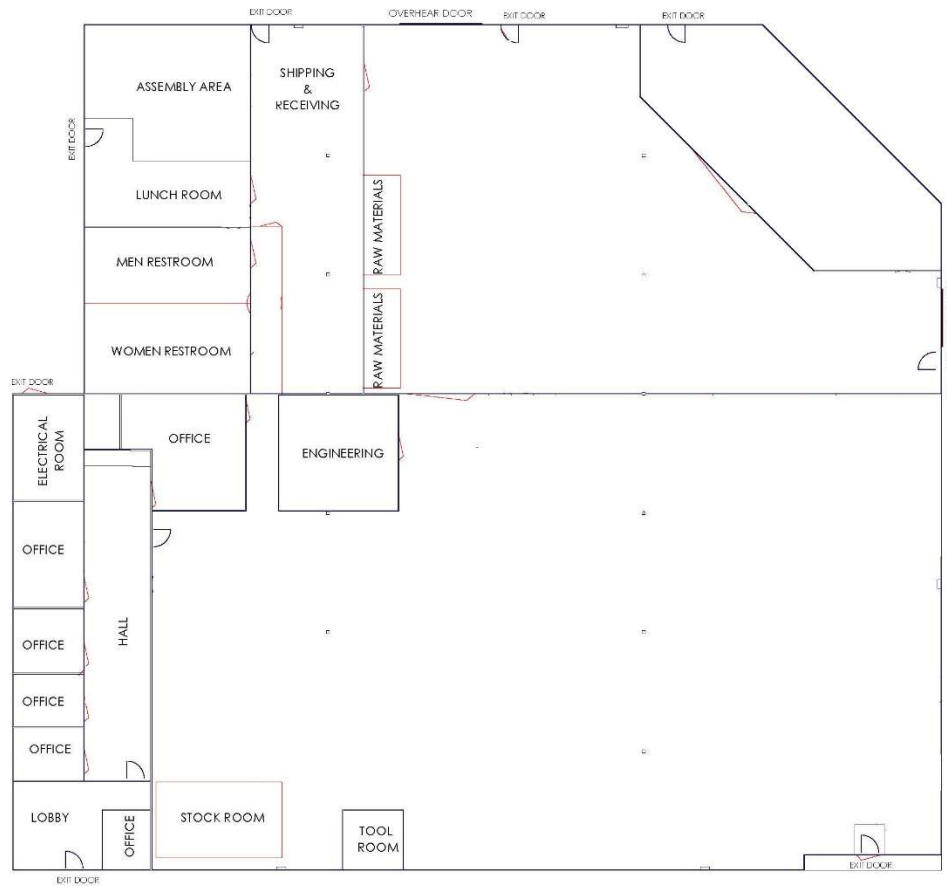
For more information, please contact:  
**KEVIN PEIXOTO**  
kevin@kpacommercial.com  
O. 408.557.0167 / C. 408.898.0177  
CalDRE Lic. No. 01411086 / CalDRE Corp. Lic. No. 02035384

[www.kpacommercial.com](http://www.kpacommercial.com)

The information contained herein was obtained from sources believed reliable; however, KPA Commercial, Inc. and its agents make no guarantee, warranty or representation, either expressed or implied, as to the completeness or accuracy thereof. The presentation of this property is submitted subject to errors, omissions, change of price or conditions prior to sale or lease, or withdrawal without notice.

# FLOOR PLAN

**KPA**  
COMMERCIAL



\*DRAWINGS NOT TO SCALE / NOT EXACT

For more information, please contact:

**KEVIN PEIXOTO**

kevin@kpacommercial.com

O. 408.557.0167 / C. 408.898.0177

CalDRE Lic. No. 01411086 / CalDRE Corp. Lic. No. 02035384

[www.kpacommercial.com](http://www.kpacommercial.com)

The information contained herein was obtained from sources believed reliable; however, KPA Commercial, Inc. and its agents make no guarantee, warranty or representation, either expressed or implied, as to the completeness or accuracy thereof. The presentation of this property is submitted subject to errors, omissions, change of price or conditions prior to sale or lease, or withdrawal without notice.



# AERIAL MAP

**KPA**  
COMMERCIAL



For more information, please contact:

**KEVIN PEIXOTO**

kevin@kpacommercial.com

O. 408.557.0167 / C. 408.898.0177

CalDRE Lic. No. 01411086 / CalDRE Corp. Lic. No. 02035384

[www.kpacommercial.com](http://www.kpacommercial.com)

The information contained herein was obtained from sources believed reliable; however, KPA Commercial, Inc. and its agents make no guarantee, warranty or representation, either expressed or implied, as to the completeness or accuracy thereof. The presentation of this property is submitted subject to errors, omissions, change of price or conditions prior to sale or lease, or withdrawal without notice.