

FOR SALE

101 St. Francois Plaza, 99 Roper Drive and 1 & 12 Junction City Drive
Park Hills, MO 63601



Kathleen Murphy
Business Development/Commercial Asset Manager
Mobile: 314-448-8954
kmurphy@gundakercommercial.com

Jim Alexander
Vice President
Mobile: 314-954-0540
jalexander@gundakercommercial.com


GUNDAKER
COMMERCIAL GROUP

PROPERTY HIGHLIGHTS

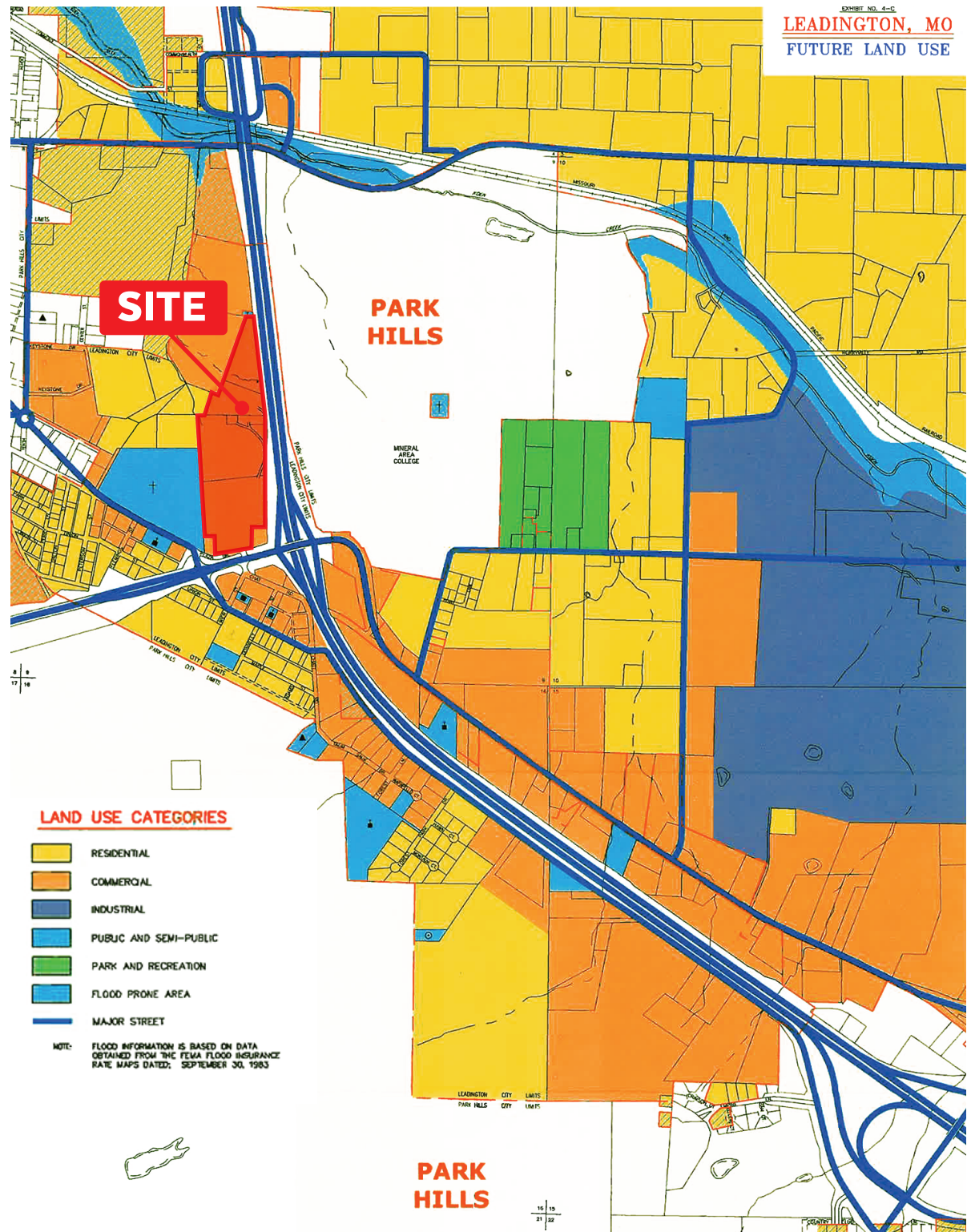
- 27± Total Acres
- Corner location at the intersection of Hwy 67 & 32
- 2,300' of direct frontage on Hwy 67 and over 350' frontage on MO 32 for maximum exposure
- Ameren single phase 12 kV service on site
- Public water and sewer
- Adjacent Mineral Area College with strong daily traffic
- Near MAC Industry & Tech Center & MTC Truck Driver Training Center
- Ideal for travel center, fuel, QSR, hospitality, trucking, or mixed-use
- Large, flexible site for phased or multi-tenant development
- **SALE PRICE: CONTACT BROKER**





LOCATION

Nestled within southeastern Missouri, just over one hour from the Missouri and Illinois border, the cities of Park Hills and Leadington are afforded an ideal Midwest location. The neighboring communities, part of St. Francois County's Lead Belt (also recognized as the Mineral Area), are connected by Missouri Route 32. U.S. Route 67 runs along the eastern border of Park Hills, linking with Interstate 55 (approximately 30 miles east of the area) and providing a direct link to the city of St. Louis, positioned around 1.5 hours north of Park Hills and Leadington.



CONTACT US:

KATHLEEN MURPHY

Business Development/Commercial Asset Manager

Direct: 636-728-5126

Mobile: 314-448-8954

kmurphy@gundakercommercial.com

JIM ALEXANDER

Vice President

Mobile: 314-954-0540

jalexander@gundakercommercial.com



GUNDAKER
COMMERCIAL GROUP

*55 Westport Plaza Drive, Ste. 200
St. Louis, MO 63146*

M: 636-728-5100 | F: 636-728-5140

gundakercommercial.com [**in**](#) [**@**](#) [**f**](#)