



- 3,600 SF endcap with patio (or demised to 2,100 SF and 1,500 SF)
- Anchored by Sprouts Farmers Market
- Located at the NEC Williamson Blvd & Cornerstone Blvd
- Shared access with Tomoka Town Center

SEC LPGA BLVD. & WILLIAMSON BLVD, DAYTONA BEACH, FL 32114

SHOPS OF WILLIAMSON CROSSING

ENDCAP WITH PATIO AVAILABLE AT SPROUTS CENTER (NOW OPEN)

STACY MILLER MENENDEZ 321.303.0884 SMENENDEZ@ATLANTICRETAIL.COM

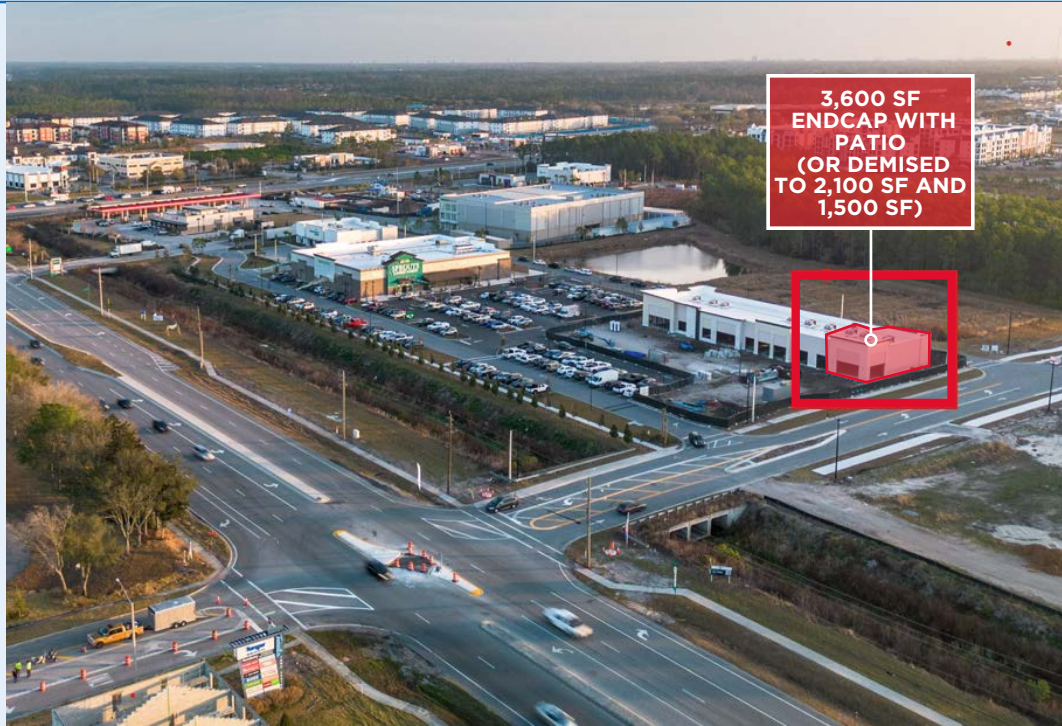


PROPERTY
DETAILS

PROPERTY HIGHLIGHTS

- 3,600 SF Endcap Available with Patio (or demised to 2,100 SF and 1,500 SF)
- Located at signalized intersection of Williamson Blvd & Cornerstone Blvd with access to LPGA and Clyde Morris Blvd. Signal install June 2026
- Shared signal with Tomoka Town Center and Tanger Outlets with 10.5 M visits collectively (per Placer ai).
- Anchored by Sprouts Farmers Market (Now Open)
- High growth residential with +/- 13,578 units planned & under construction

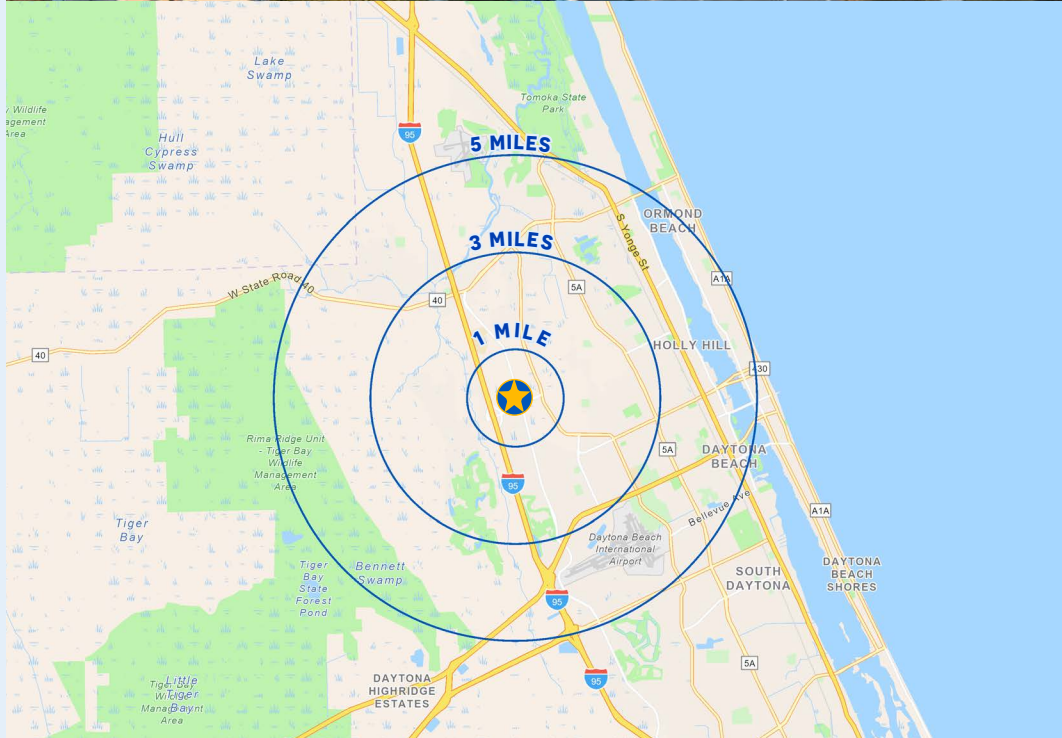
AREA RETAILERS- COMING SOON



3,600 SF
ENDCAP WITH
PATIO
(OR DEMISED
TO 2,100 SF AND
1,500 SF)

DEMOGRAPHICS

	1 MILE	3 MILE	5 MILE
POPULATION	1,894	50,806	116,855
DAYTIME POPULATION	6,188	64,650	151,525
AVERAGE HH INCOME	\$78,628	\$80,078	\$80,898
TOTAL HOUSEHOLDS	961	23,000	50,508

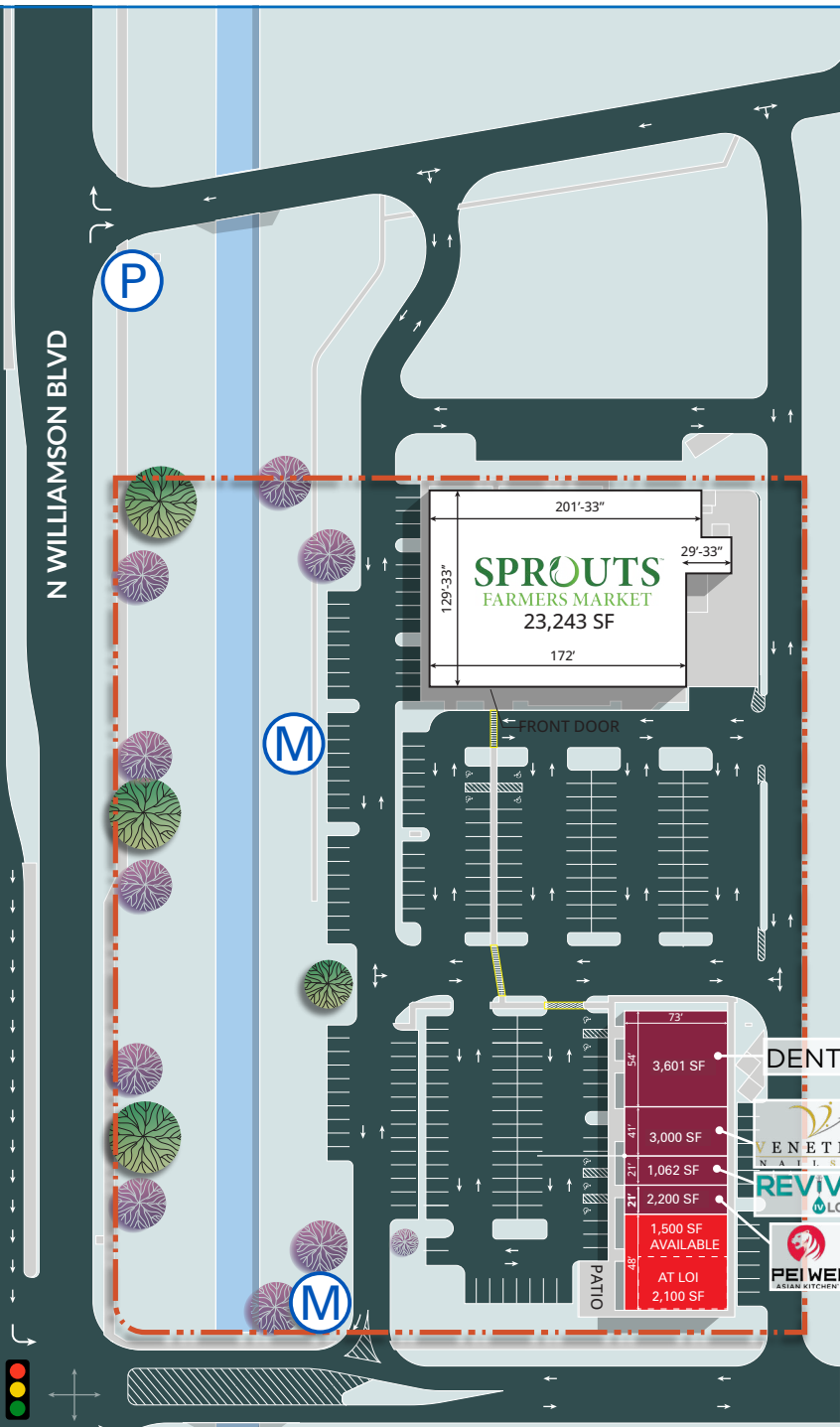


SOURCE: ESRI 2024

SITE PLAN

- AVAILABLE
- AT LEASE
- M MONUMENT
- P PYLON

SUITE 1	DENTIST	3,601 SF
SUITE 2	VENETIAN NAIL SPA	3,000 SF
SUITE 3	REVIVAL IV LOUNGE	1,062 SF
SUITE 4	PEI-WEI	2,200 SF
SUITE 5	AVAILABLE	1,500 SF
SUITE 5	AT LOI	2,100 SF ENDCAP



SITE AERIAL



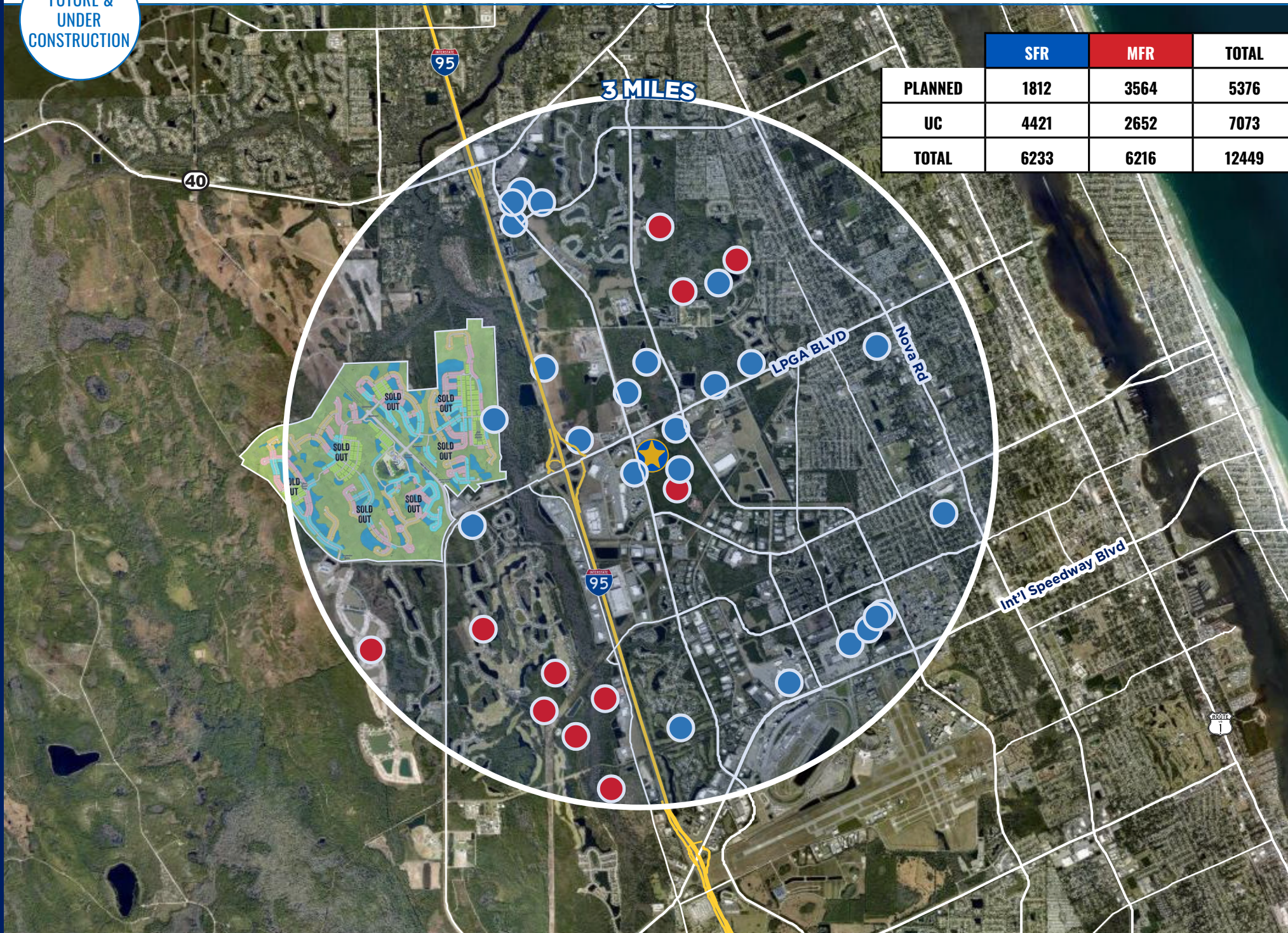
CORNERSTONE OFFICE PARK
90,000± RSF

HOTEL

OASIS:
MIXED USE DEVELOPMENT PROJECT.
450 APARTMENTS
300 TOWNHOMES
150 SF HOMES

FUTURE &
UNDER
CONSTRUCTION

SHOPS OF WILLIAMSON CROSSING • DAYTONA BEACH • ENDCAP WITH PATIO AVAILABLE AT SPROUTS CENTER (NOW OPEN)



	SFR	MFR	TOTAL
PLANNED	1812	3564	5376
UC	4421	2652	7073
TOTAL	6233	6216	12449

SEC LPGA BLVD. & WILLIAMSON BLVD, DAYTONA BEACH, FL 32114

SHOPS OF WILLIAMSON CROSSING

ENDCAP WITH PATIO AVAILABLE AT SPROUTS CENTER (NOW OPEN)

STACY MILLER MENENDEZ

321.303.0884

SMENENDEZ@ATLANTICRETAIL.COM



ORLANDO

1180 SOLANA AVENUE
WINTER PARK FL, 32789
407.919.6575

ALBANY

ATLANTA

BOSTON

CHARLESTON

CHARLOTTE

LOS ANGELES

NEW YORK CITY

PITTSBURGH

WEST PALM BEACH

WWW.ATLANTICRETAIL.COM

 [LINKEDIN.COM/COMPANY/ATLANTIC-RETAIL-PROPERTIES](https://www.linkedin.com/company/atlantic-retail-properties)

 [INSTAGRAM.COM/ATLANTIC_RETAIL/](https://www.instagram.com/atlantic_retail/)

 REALTY
RESOURCES

 CHAINLINKS
RETAIL ADVISORS