



OFFICE SUBLEASE – HERC RENTALS

FOR SUBLEASE 3550 S. HOOVER RD., WICHITA, KS 67215

LEASE RATE	Contact Broker
BUILDING SIZE	8,254 SF
AVAILABLE SF	8,254 SF
SITE SIZE	26,120 SF (0.6 A)
YEAR BUILT	2000
PARKING	30 Spaces

PROPERTY HIGHLIGHTS

- Office space available for sublease.
- Lease expires 7/31/2033.
- 8 very nice large offices and 1 large conference room.
- Kitchen on the 1st floor and a wet bar on the 2nd floor.
- Elevator.

TRAFFIC COUNTS

 WATERMAN & WASHINGTON	22,140 VPD
---	------------



OFFICE SUBLEASE – HERC RENTALS

FOR SUBLEASE 3550 S. HOOVER RD., WICHITA, KS 67215

WEIGAND
COMMERCIAL

INTERIOR PHOTOS

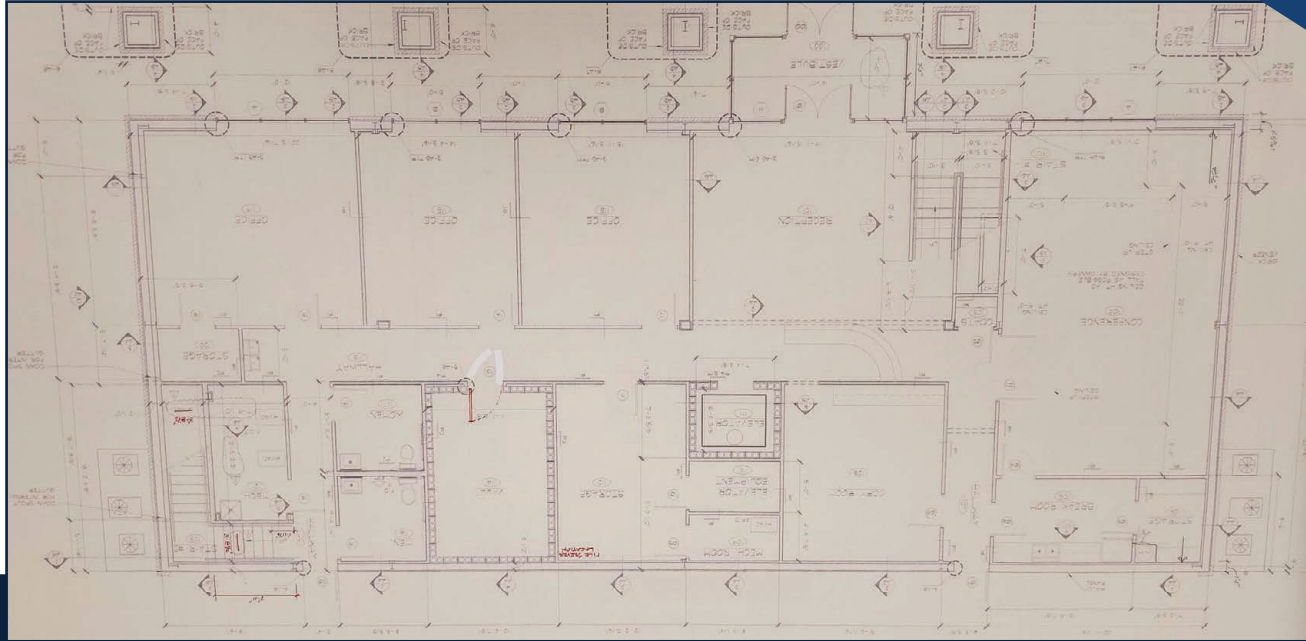


Mike Loveland, CCIM, MBA | 316-292-3915 | loveland@weigand.com

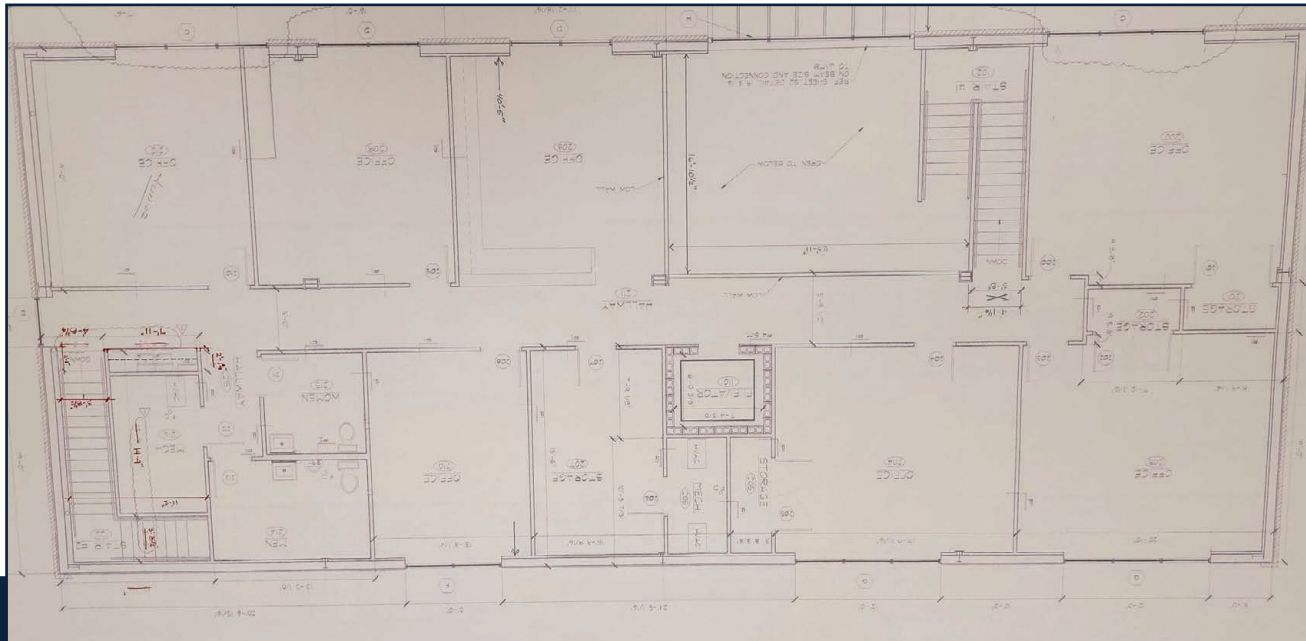
Weigand Real Estate – Commercial
Office: 316-262-6400
Weigand.com

FLOOR PLANS

1ST FLOOR



2ND FLOOR



OFFICE SUBLEASE – HERC RENTALS

FOR SUBLEASE 3550 S. HOOVER RD., WICHITA, KS 67215

WEIGAND
COMMERCIAL

AERIAL VIEW



All information furnished regarding property for sale, lease, exchange or financing is from sources deemed reliable but no guarantee is made or responsibility assumed as to its accuracy or completeness and you are advised to make your own analysis and verification.
Agent hereby notifies prospective buyer/lessee that (a) Agent will be acting as a designated agent of seller/lessor with the duty to represent seller/lessor's interest; and (b) Information given to Agent will be disclosed to seller/lessor.



Mike Loveland, CCIM, MBA | 316-292-3915 | loveland@weigand.com

Weigand Real Estate – Commercial

Office: 316-262-6400

Weigand.com