

RE/MAX

COMMERCIAL®

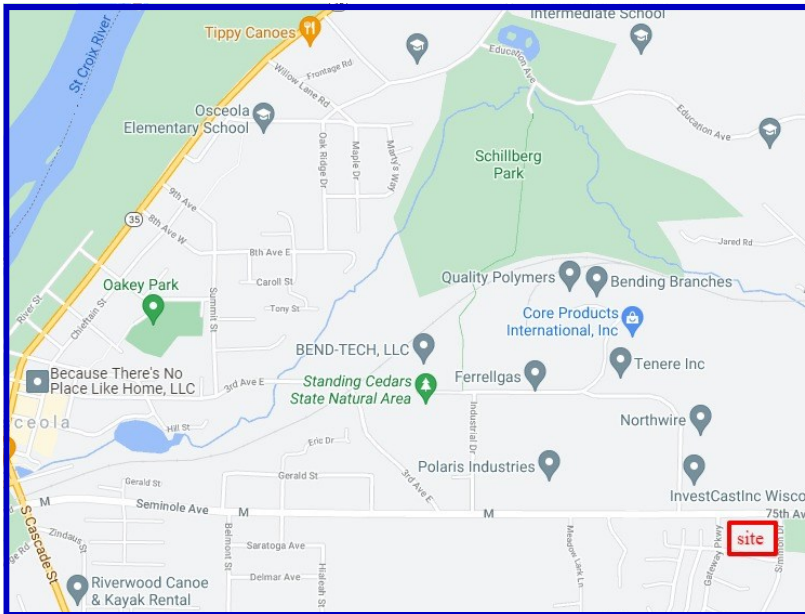
FOR SALE

XXX Simmon Dr, Osceola, WI 54020



Land For Sale

- 4.37 Acre - Pad Ready Site
- City Water / City Sewer
- Ideal for Gas / C-Store
- Near Industrial Park & Airport
- New Housing Developments
- 3,800+ VPD
- Zoning :Commercial
- Tax ID : 165008440061
- **Price: \$650,000 (\$3.41psf)**



For Information Contact:

Mike Muske
651-982-1219
mmuske@remax.net

RE/MAX
Synergy

A Muske Company
920 W. Broadway, Forest Lake, MN 55025
651-464-7070
www.SynergySold.com

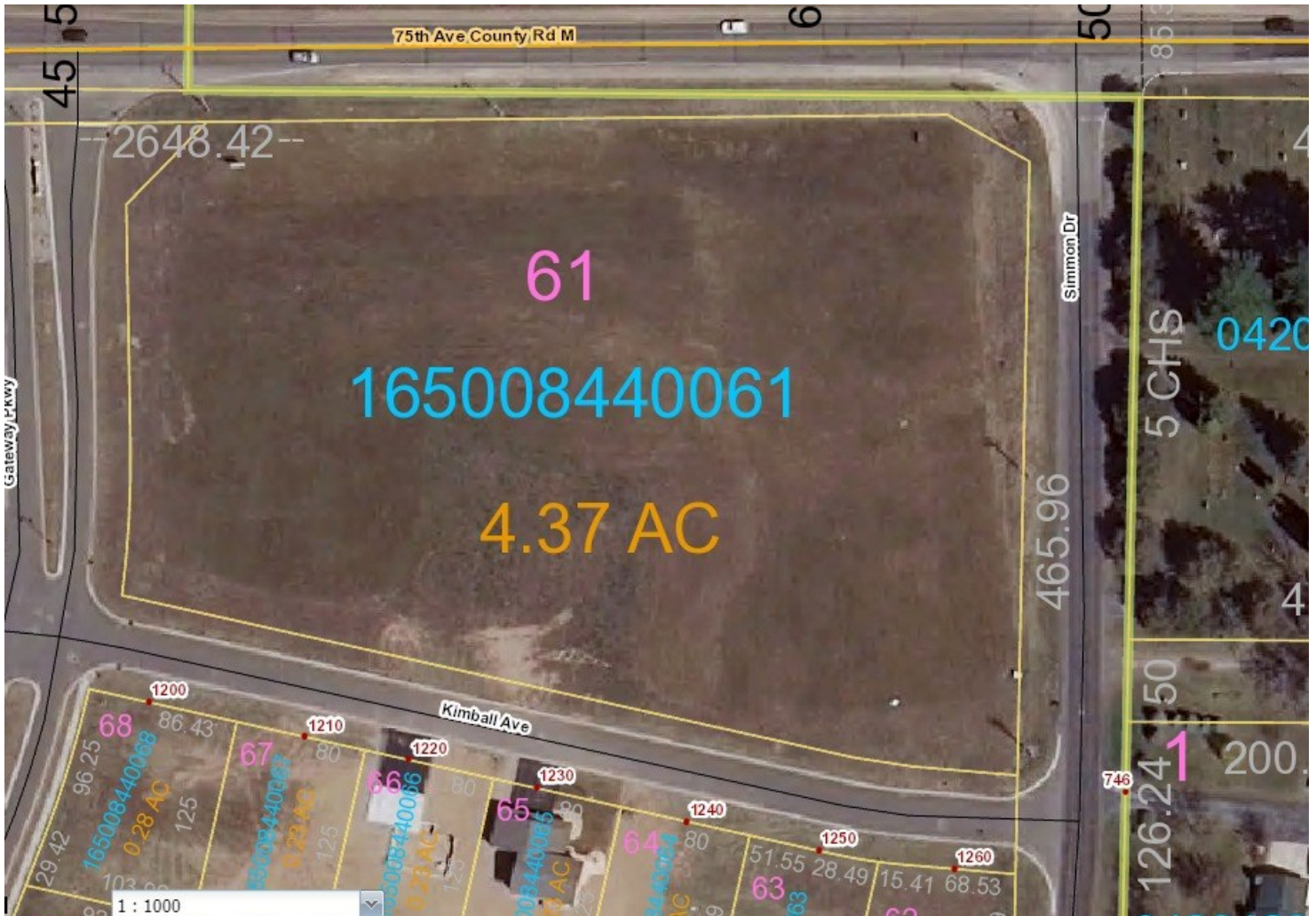
RE/MAX
Synergy

RE/MAX

COMMERCIAL®

AERIAL

XXX Simmon Dr, Osceola, WI 54020



RE/MAX
Synergy

A Muske Company
920 W. Broadway, Forest Lake, MN 55025
651-464-7070
www.SynergySold.com

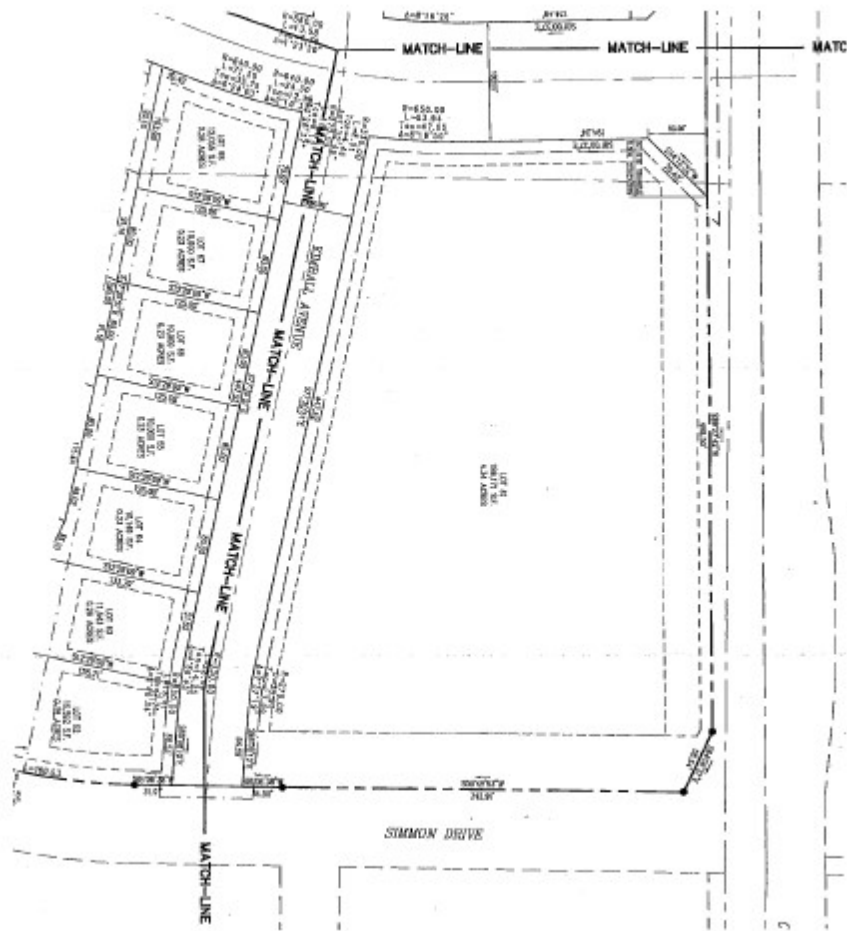
RE/MAX
Synergy

RE/MAX

COMMERCIAL[®]

SURVEY

XXX Simmon Dr, Osceola, WI 54020



RE/MAX
Synergy

A Muske Company
920 W. Broadway, Forest Lake, MN 55025
651-464-7070
www.SynergySold.com

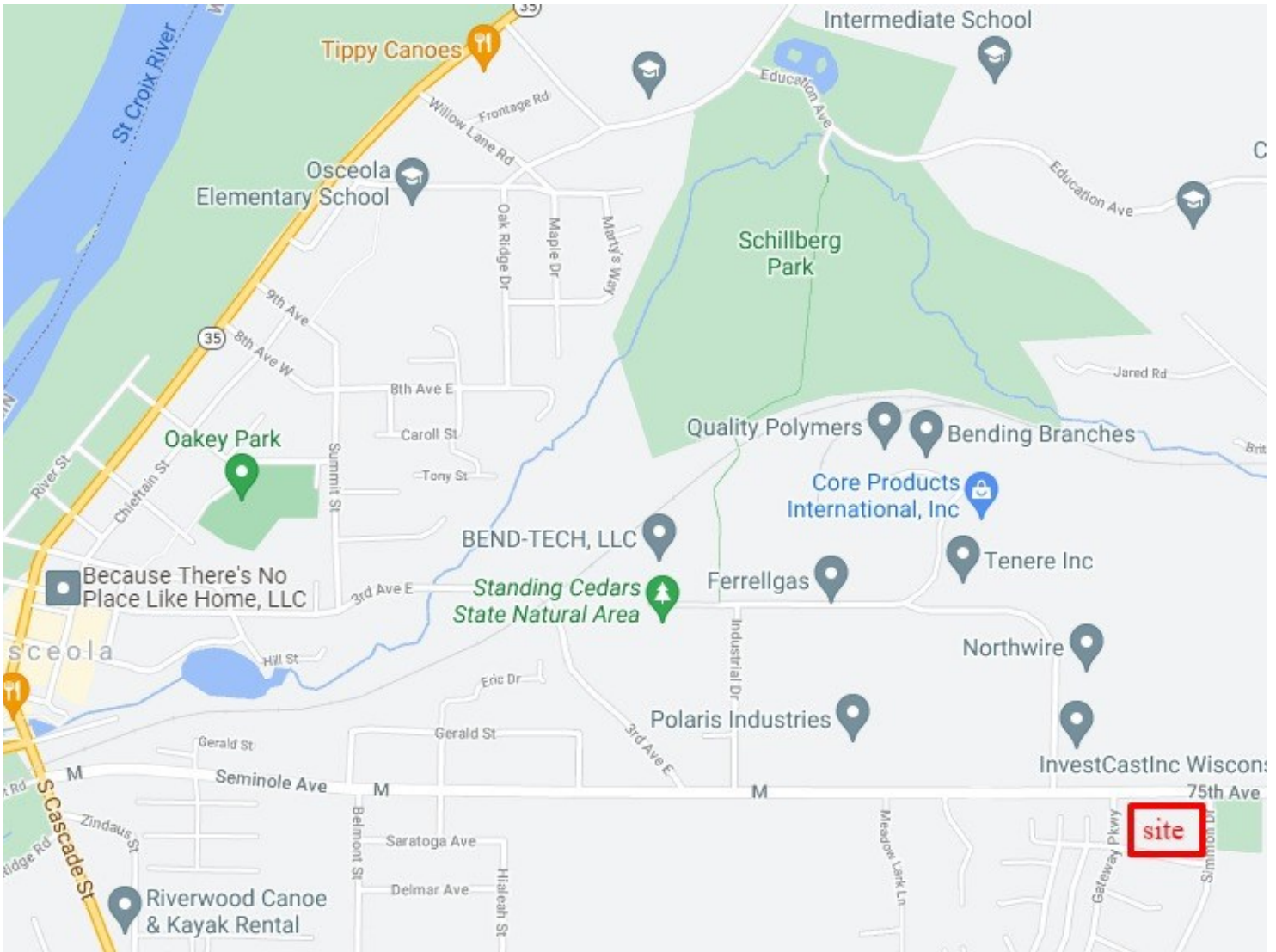
RE/MAX
Synergy

RE/MAX

COMMERCIAL®

MAP

XXX Simmon Dr, Osceola, WI 54020



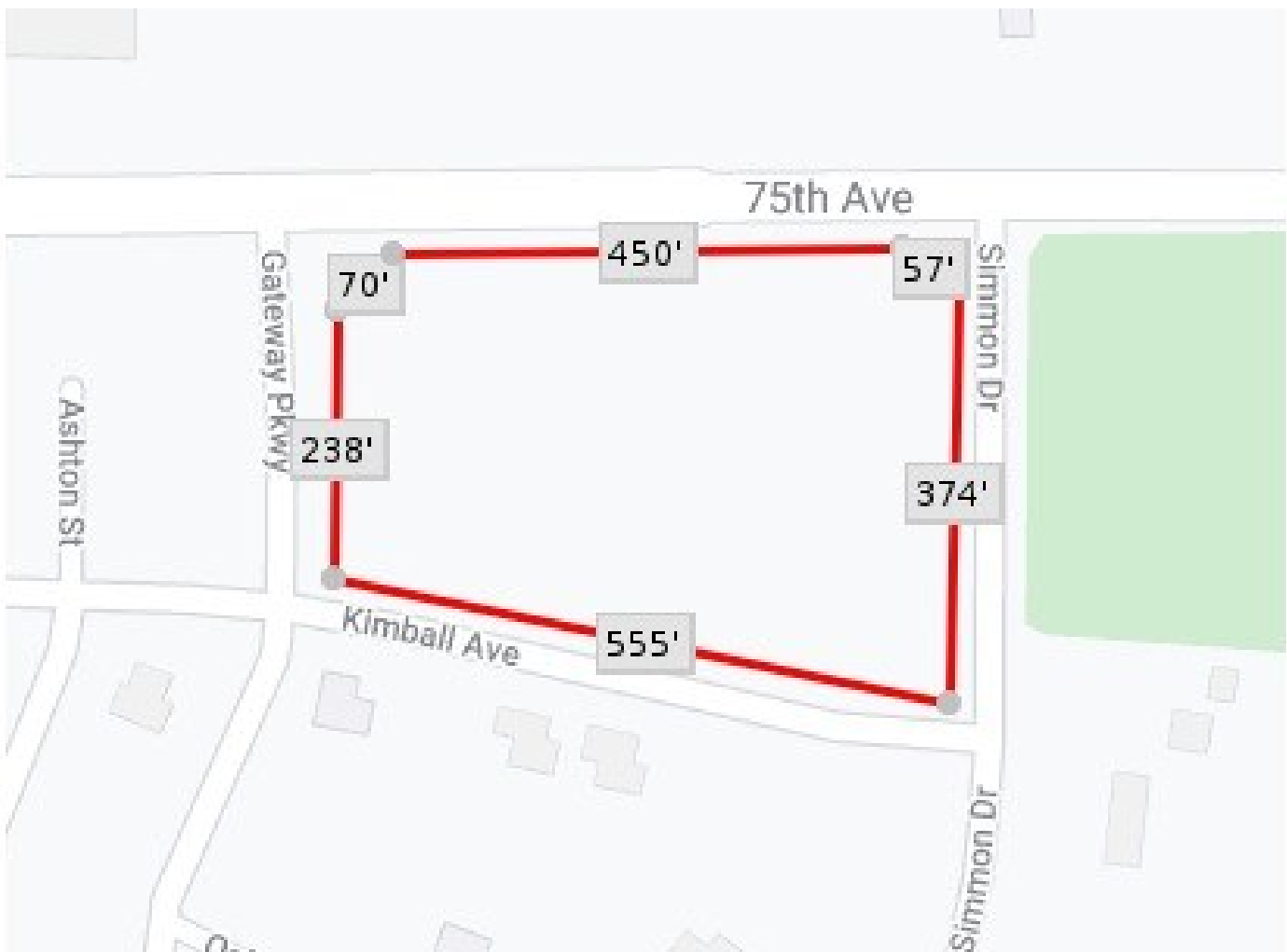
A Muske Company
920 W. Broadway, Forest Lake, MN 55025
651-464-7070
www.SynergySold.com





SITE

XXX Simmon Dr, Osceola, WI 54020



A Muske Company
920 W. Broadway, Forest Lake, MN 55025
651-464-7070
www.SynergySold.com



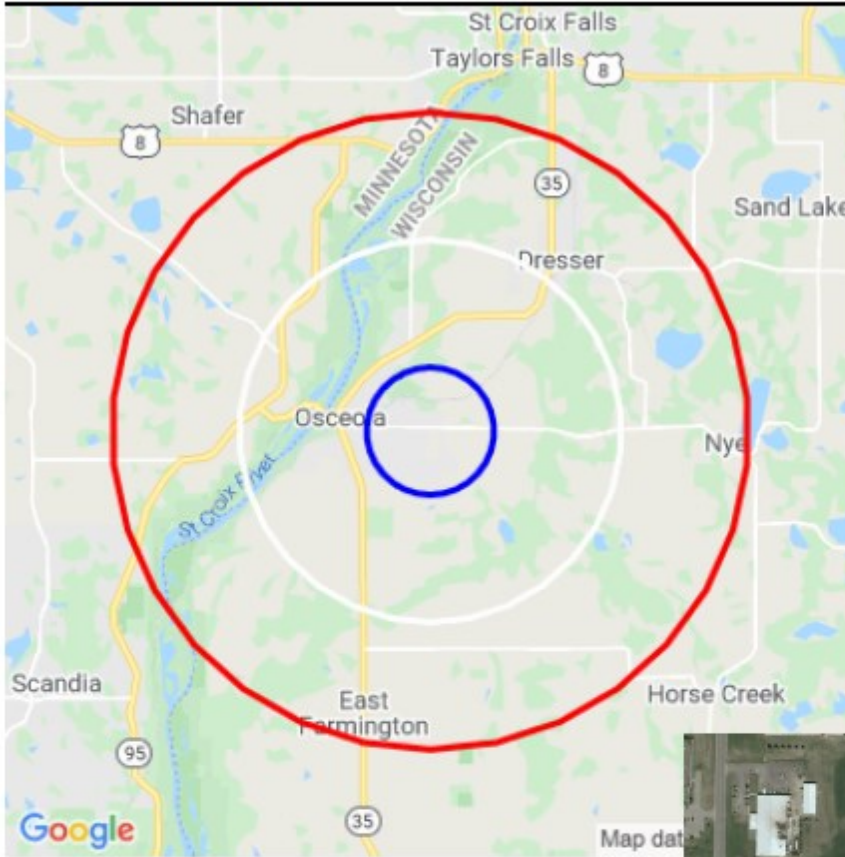
RE/MAX

COMMERCIAL®

DEMOGRAPHICS

XXX Simmon Dr, Osceola, WI 54020

Demographic Report



Seminole Ave & Simmon Dr - 4.37 Acres

Population

Distance	Male	Female	Total
1- Mile	254	260	514
3- Mile	2,168	2,172	4,341
5- Mile	3,213	3,201	6,414



RE/MAX
Synergy

A Muske Company
920 W. Broadway, Forest Lake, MN 55025
651-464-7070
www.SynergySold.com

RE/MAX
Synergy