

1900 – 1910 OPDYKE COURT
AUBURN HILLS, MICHIGAN

HI-TECH FOR LEASE
14,300 Square Feet Available



**SIGNATURE
ASSOCIATES**
KNOW SIGNATURE | KNOW RESULTS

MEADOWBROOK TECHNICAL CENTER



PROPERTY FEATURES

- 14,300 square feet available
- 9,800 square feet office
- 16'11" clear height
- (1) 12' x 12' grade level door
- 800 amps, 277/480 volts power
- Outstanding I-75 visibility and access
- Great floor plan
- Fully air-conditioned
- Will remodel to suit
- Contemporary finishes
- Lease Rate: \$9.95/sq. ft. NNN



For more information, please contact:

PAUL HOGE
(248) 948 0103
paulhoge@signatureassociates.com

JOE BANYAI
(248) 948 0108
jbanyai@signatureassociates.com

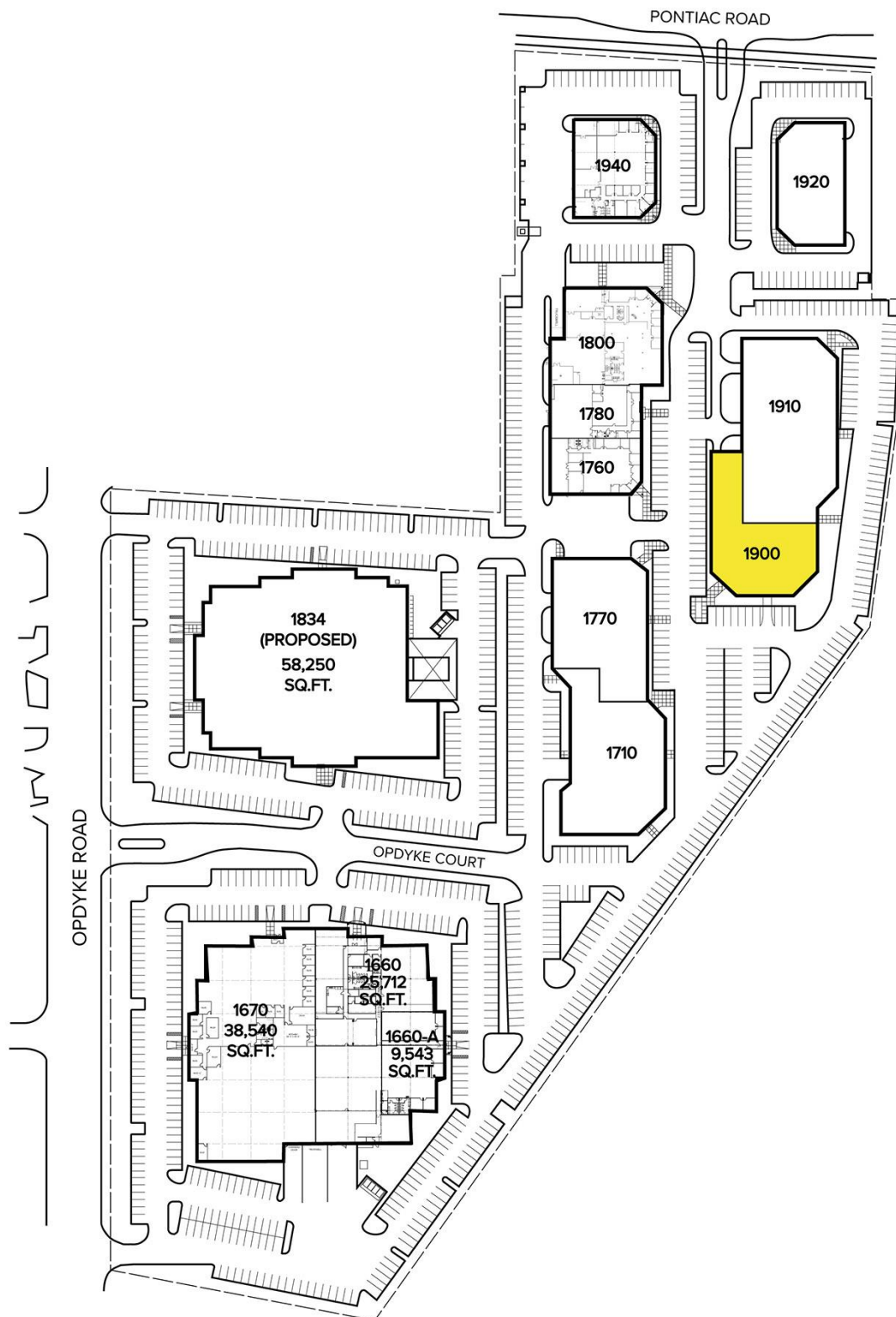
SIGNATURE ASSOCIATES
One Towne Square, Suite 1200
Southfield, MI 48076
www.signatureassociates.com

1900 -1910 Opdyke Court – Auburn Hills, Michigan

Hi-Tech For Lease

14,300
Square Feet
AVAILABLE

Floor Plan



For more information, please contact:

PAUL HOGE
(248) 948 0103
paulhoge@signatureassociates.com

JOE BANYAI
(248) 948 0108
jbanyai@signatureassociates.com

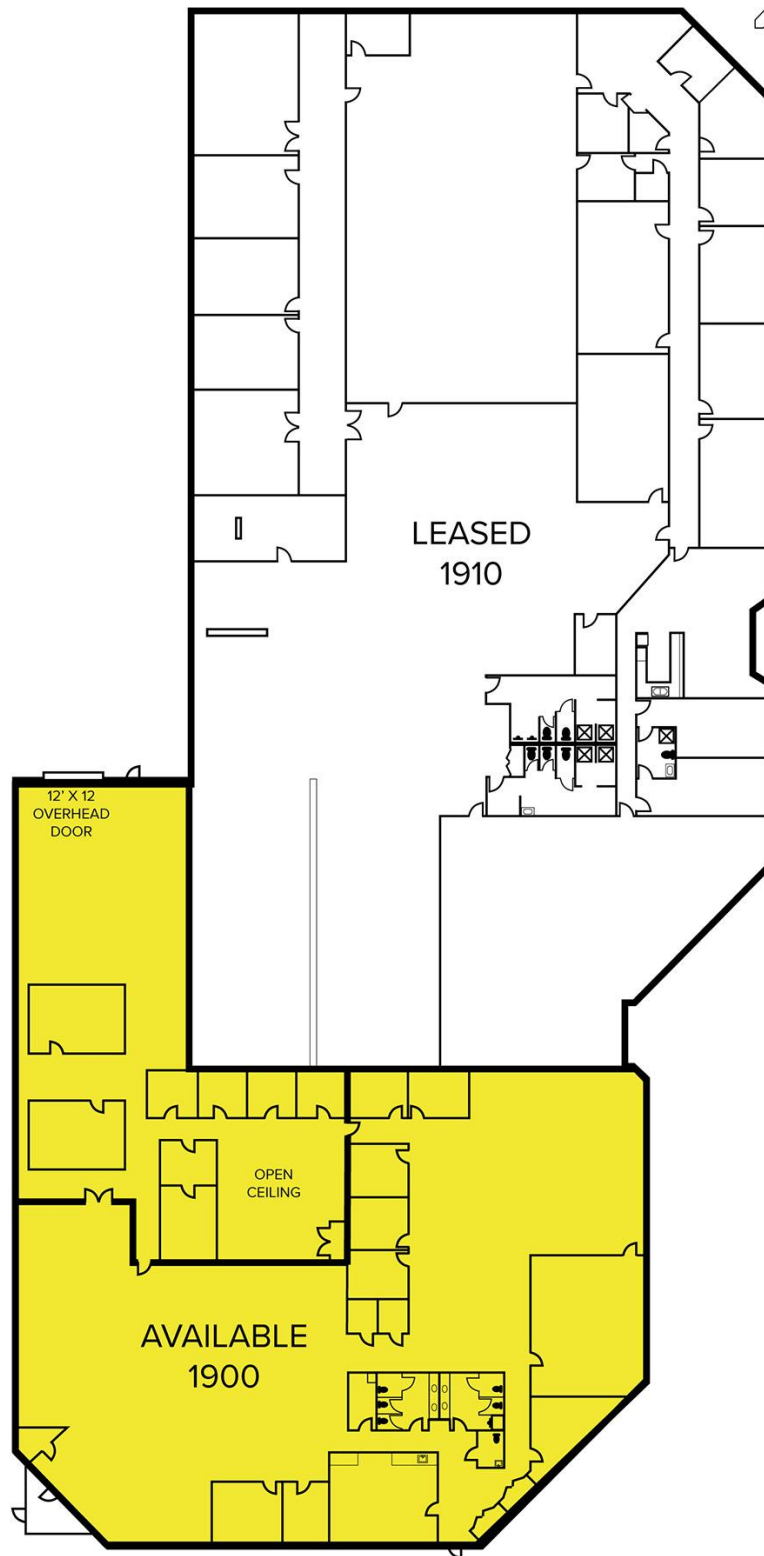
SIGNATURE ASSOCIATES
One Towne Square, Suite 1200
Southfield, MI 48076
www.signatureassociates.com

1900 -1910 Opdyke Court – Auburn Hills, Michigan

Hi-Tech For Lease

14,300
Square Feet
AVAILABLE

Floor Plan



For more information, please contact:

PAUL HOGE
(248) 948 0103
paulhoge@signatureassociates.com

JOE BANYAI
(248) 948 0108
jbanyai@signatureassociates.com

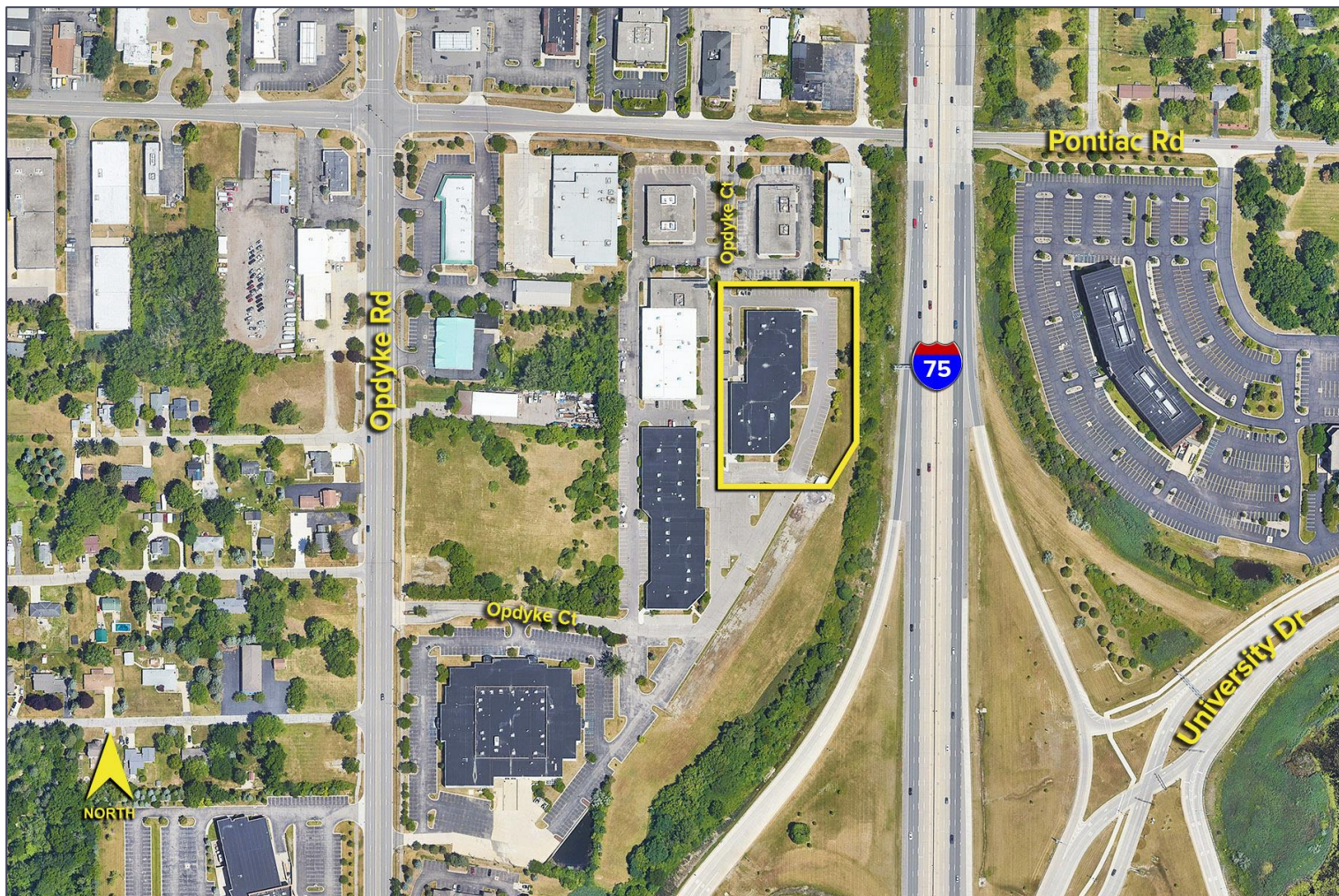
SIGNATURE ASSOCIATES
One Towne Square, Suite 1200
Southfield, MI 48076
www.signatureassociates.com

1900 -1910 Opdyke Court – Auburn Hills, Michigan

Hi-Tech For Lease

14,300
Square Feet
AVAILABLE

Aerial



For more information, please contact:

PAUL HOGE
(248) 948 0103
paulhoge@signatureassociates.com

JOE BANYAI
(248) 948 0108
jbanyai@signatureassociates.com

SIGNATURE ASSOCIATES
One Towne Square, Suite 1200
Southfield, MI 48076
www.signatureassociates.com