



11675 Century Dr, Unit A

11675 Century Dr, Alpharetta, GA 30009

Devadatta Gurude

SYashVar LLC

910 Southfield Ln, Alpharetta, GA 30004

dgurude@gmail.com

(262) 271-1921



11675 Century Dr, Unit A

\$20.00 /SF/Yr

Amazing office building close to downtown Alpharetta on Highway 9. High traffic location with over 25,000 cars per day. Less than a mile from the intersection of Hwy 9 and Windward Pkwy and just minutes from downtown Alpharetta and GA-400. Quiet community professional area. Perfect for any office business to locate and expand....

- Condo unit with 4 offices, 1 server/kitchen area, 1 reception area, and 1 restroom
- Corner Office unit with lots of Natural Sunlight
- Close to Fabulous downtown Alpharetta location on GA-9 and close to Windward Parkway
- Retail, Medical, Legal, Tech Office, etc
- C2 area zoning

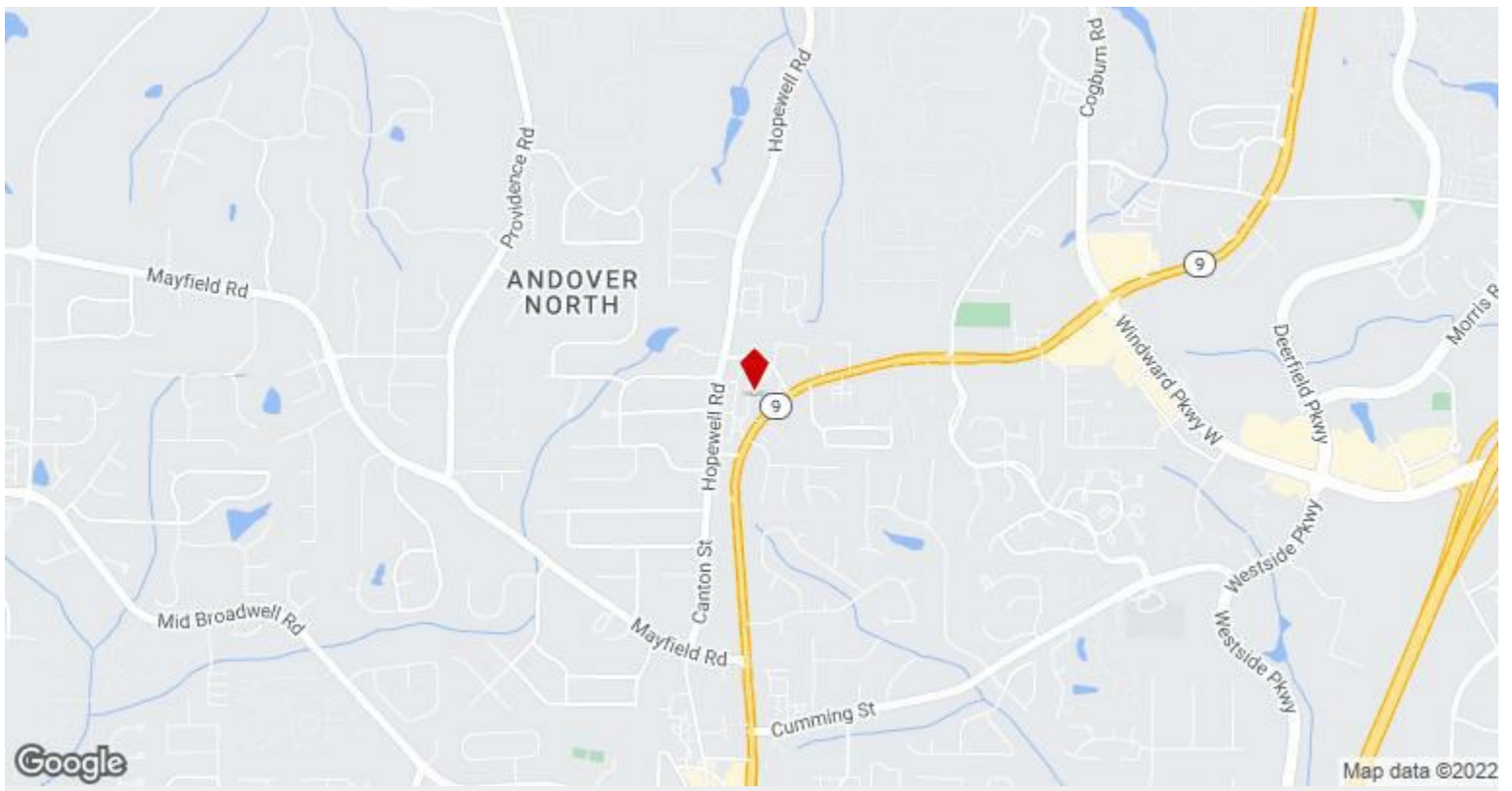


Rental Rate:	\$20.00 /SF/Yr
Property Type:	Office
Property Subtype:	Medical
Building Class:	C
Rentable Building Area:	4,600 SF
Year Built:	2003
Walk Score ®:	35 (Car-Dependent)
Transit Score ®:	26 (Some Transit)
Rental Rate Mo:	\$1.67 USD/SF/Mo

1st Floor Ste A

Space Available	1,150 SF
Rental Rate	\$20.00 /SF/Yr
Date Available	Now
Service Type	Triple Net (NNN)
Built Out As	Standard Office
Space Type	New
Space Use	Office
Lease Term	3 Years

Corner Condo-Office unit with 4 offices, 1 server/kitchen area, 1 reception area, and 1 restroom. Brings in lots of Natural Sun Light. Building Access is very simple plus handicap wheelchair accessible from the parking lot to the office building as the office is just one(1) story building. Quiet Commercial Flexible Office Space/Building With Building Signage Available. Close to Fabulous downtown Alpharetta location on Highway GA-9 and very close to Windward Parkway. The area is very upscale Alpharetta downtown perfect for almost any commercial professional setting: Retail, Medical, Legal, Tech Office, etc. as it's Zoned for C2 area zoning.



11675 Century Dr, Alpharetta, GA 30009

Amazing office building close to downtown Alpharetta on Highway 9. High traffic location with over 25,000 cars per day. Less than a mile from the intersection of Hwy 9 and Windward Pkwy and just minutes from downtown Alpharetta and GA-400. Quiet community professional area. Perfect for any office business to locate and expand.

Property Photos



Building Photo



Building Photo

Property Photos

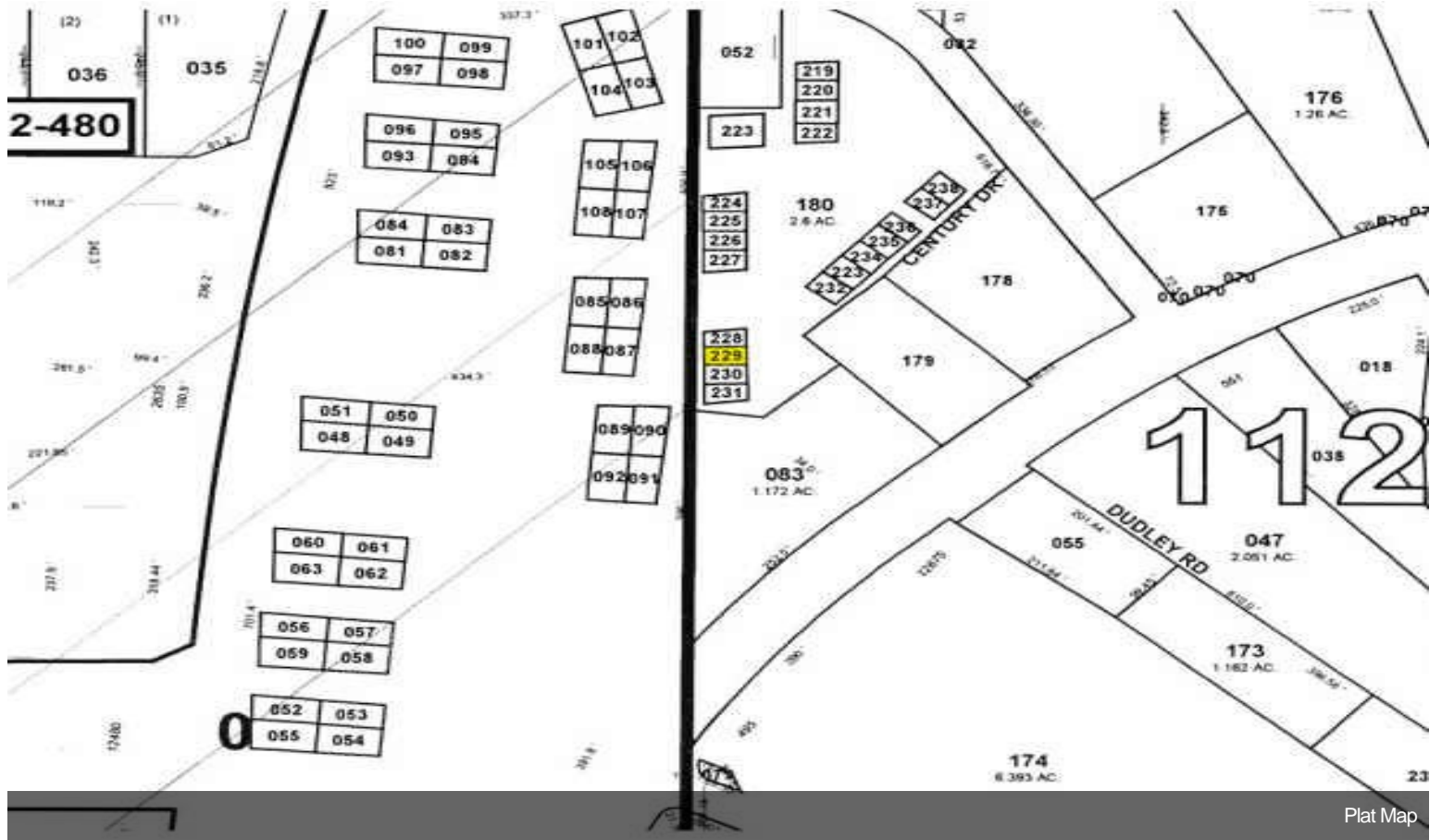


Building Photo

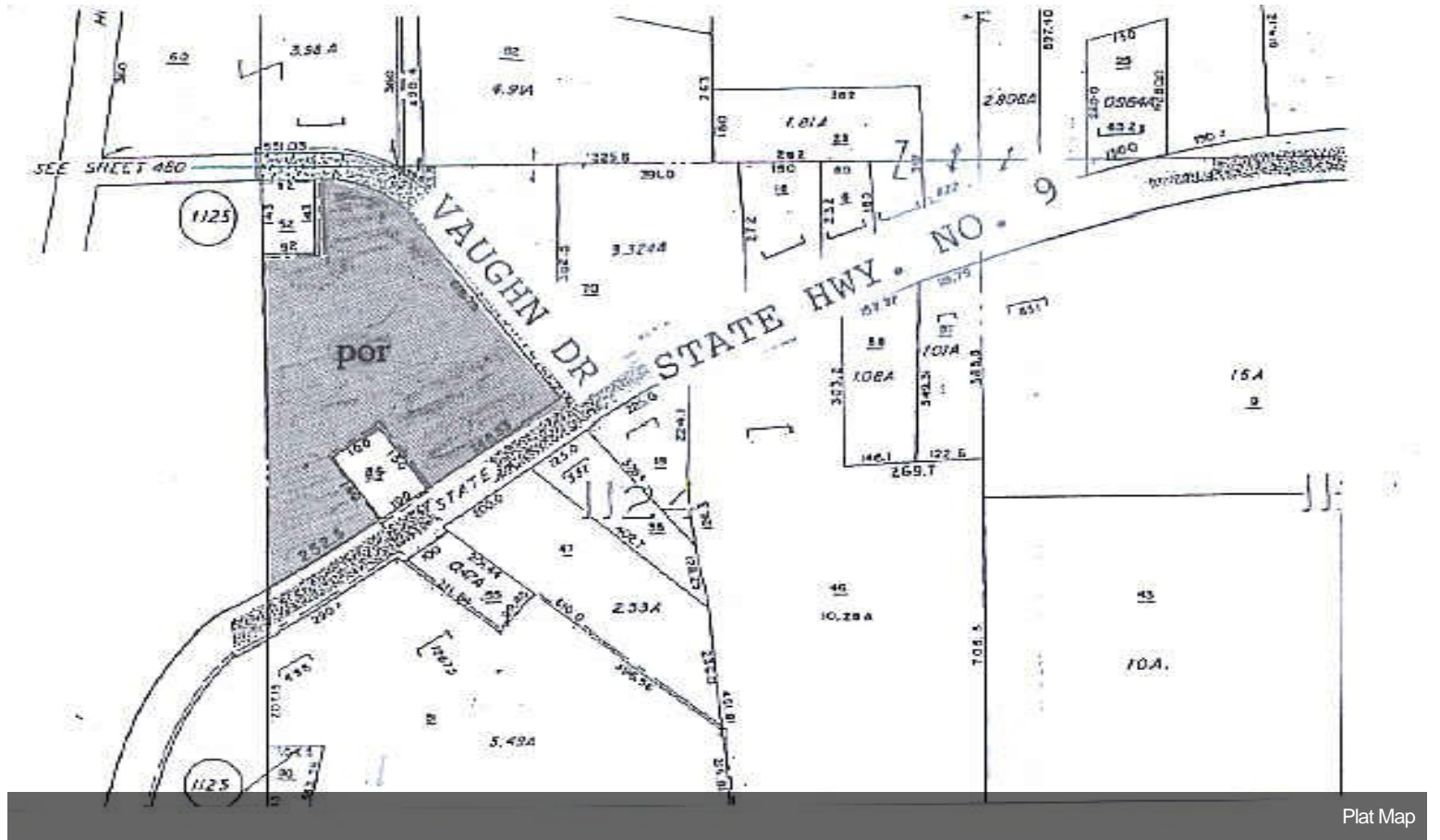


Building Photo

Property Photos



Plat Map



Plat Map