



New Office Building Available Now

This brand new office building will be located in the Meadowlake Farms Office Park. It will be the perfect opportunity to give your business a brand-new place to grow and prosper. Estimated completion of March 2024

- Brand New Construction in the front of the office park
- Office spaced finished to suit, with generous tenant finish allowances. 8' solid core doors with 10' ceilings
- Surrounded by an expanding residential and retail area
- Great size and location for professional office

ABOUT OUR PROPERTY

Meadowlake Office Park development is a beautiful, established and well maintained office park.

This 3,900 SF energy efficient building has 3 separate lease space available. Each space will be customizable to your wants and needs

Property Features

3,900 SF lease space

New Construction

Easy Access

Energy Efficient

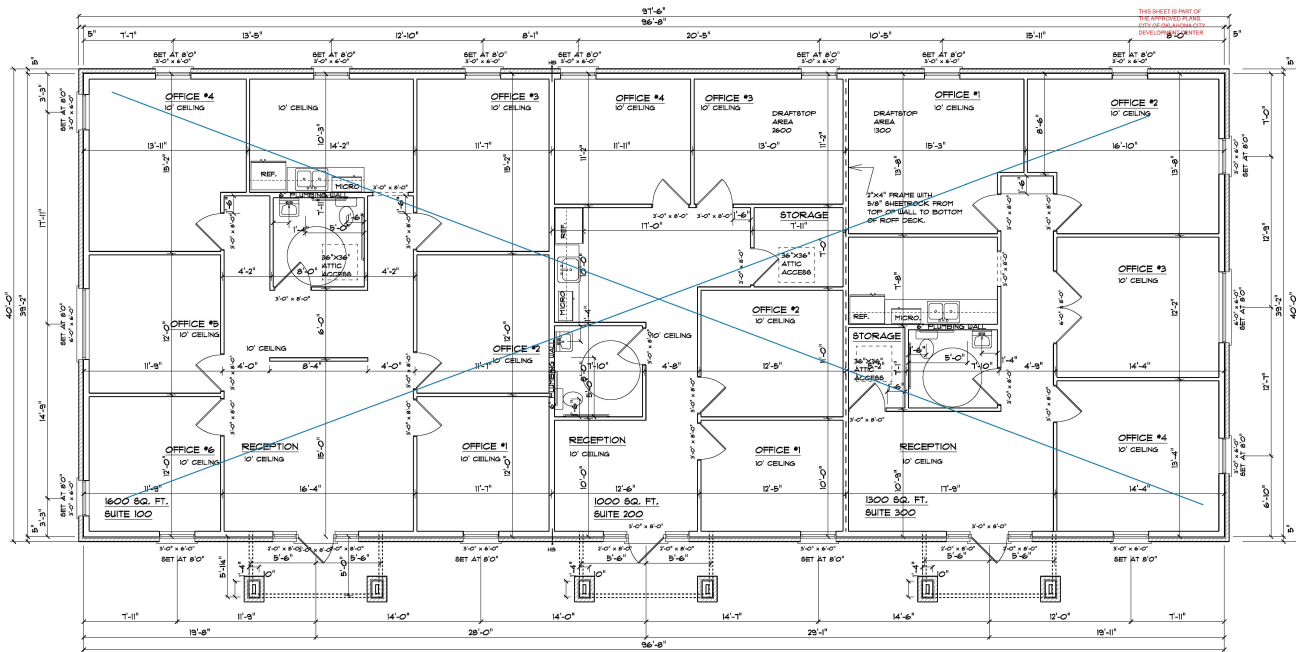
Plenty of Parking

Customized for each tenant

Call Us for More Info:
405-691-9767

Buchanan Realty Group
11801 S Western Ave STE A,
Oklahoma City, OK 73170

Steve Buchanan, CCIM
Email: steve@buchananrealty.net
www.buchananrealty.net



Lease Information			
Lease Type:	NNN	Lease Term:	Negotiable
Total Space:	3,900 SF	Lease Rate:	\$22.00 SF/YR
Available Spaces			
Suite	Size	Lease Type	Rate
922 - STE 100	1,600 SF	Triple Net (NNN)	\$22.00 SF/YR
922 - STE 200	1,000 SF	Triple Net (NNN)	\$22.00 SF/YR
922 - STE 300	1,300 SF	Triple Net (NNN)	\$22.00 SF/YR

Call Us for More Info:
405-691-9767

Buchanan Realty Group
11801 S Western Ave STE A,
Oklahoma City, OK 73170

Steve Buchanan, CCIM
Email: steve@buchananrealty.net
www.buchananrealty.net

New Building Available Now



Call Us for More Info:
405-691-9767

Buchanan Realty Group
11801 S Western Ave STE A,
Oklahoma City, OK 73170

Steve Buchanan, CCIM
Email: steve@buchananrealty.net
www.buchananrealty.net