

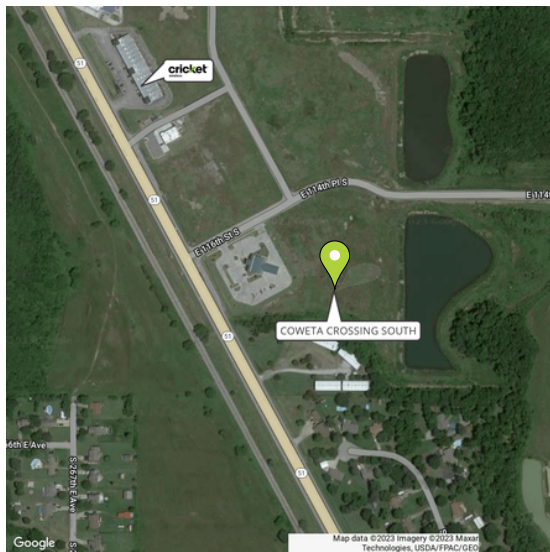
LAND FOR SALE



COWETA CROSSING SOUTH

\$ \$10 SF

↙ 22,000 SF



SITE DESCRIPTION

Land for sale. Best suited for Retail and office just to the south of Walmart between Broken Arrow and Coweta, in the heart of the retail corridor off HWY 51. Large housing development next door is being built. Build to suit up to 11,500 sf of retail or office. Current site plan is (2) 11,500 sf retail buildings.

FOR MORE INFORMATION CONTACT:

DREW DOSSEY
SALES ASSOCIATE
918.740.7707
DDOSSEY@MCGRAWOK.COM

ANDREW LEACH
SALES ASSOCIATE
918.388.6148 | 918.388.6148
ALEACH@MCGRAWCP.COM



COWETA CROSSING SOUTH

Property Photos



FOR MORE
INFORMATION
CONTACT:

DREW DOSSEY
SALES ASSOCIATE
918.740.7707
DDOSSEY@MCGRAWOK.COM

ANDREW LEACH
SALES ASSOCIATE
918.388.6148 | 918.388.6148
ALEACH@MCGRAWCP.COM

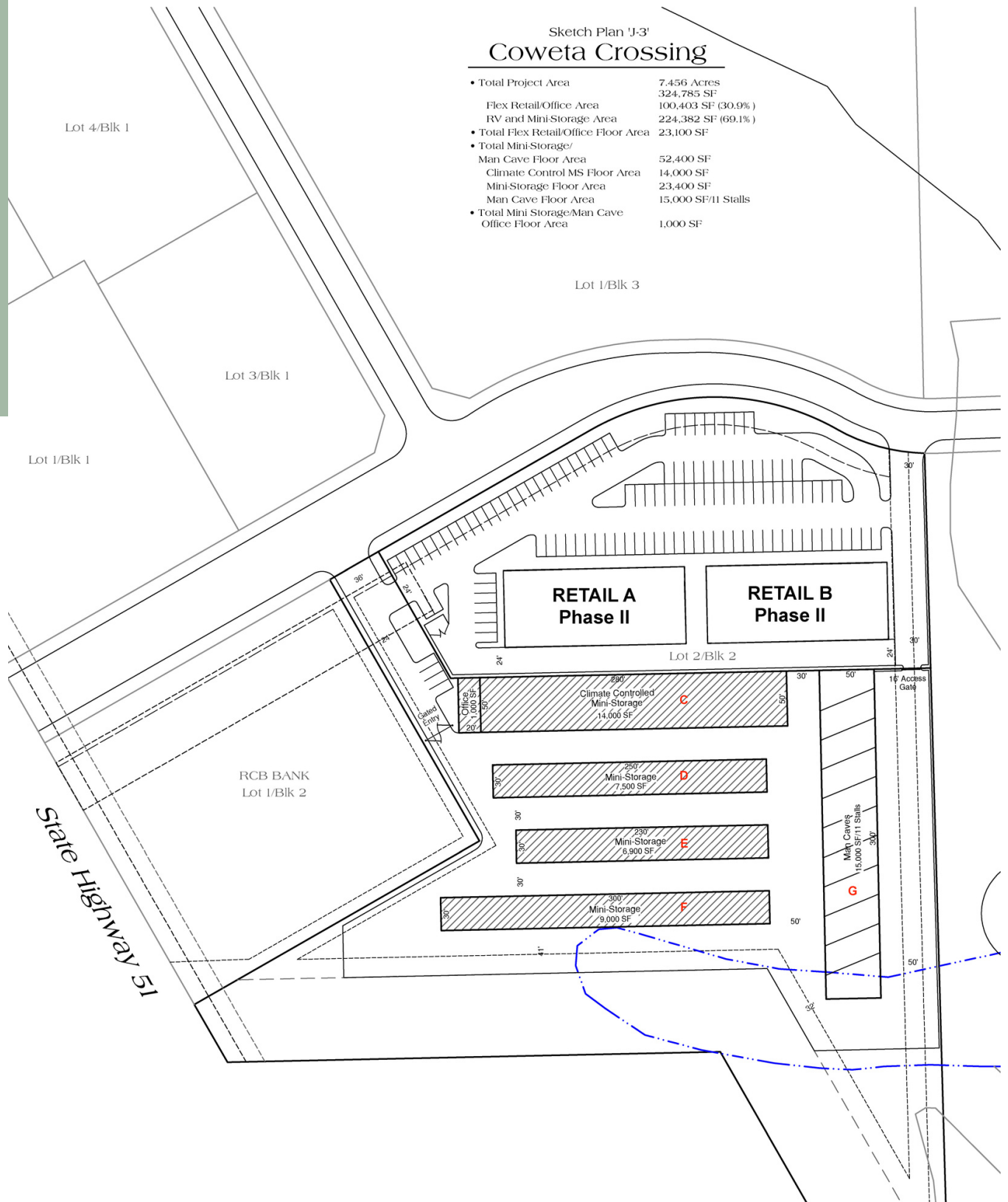
McGraw
COMMERCIAL PROPERTIES

COWETA CROSSING SOUTH

Site Plan

Sketch Plan 'J-3' Coweta Crossing

• Total Project Area	7.456 Acres
	324,785 SF
• Flex Retail/Office Area	100,403 SF (30.9%)
• RV and Mini-Storage Area	224,382 SF (69.1%)
• Total Flex Retail/Office Floor Area	23,100 SF
• Total Mini-Storage/	
Man Cave Floor Area	52,400 SF
Climate Control MS Floor Area	14,000 SF
Mini-Storage Floor Area	23,400 SF
Man Cave Floor Area	15,000 SF/11 Stalls
• Total Mini-Storage/Man Cave	
Office Floor Area	1,000 SF



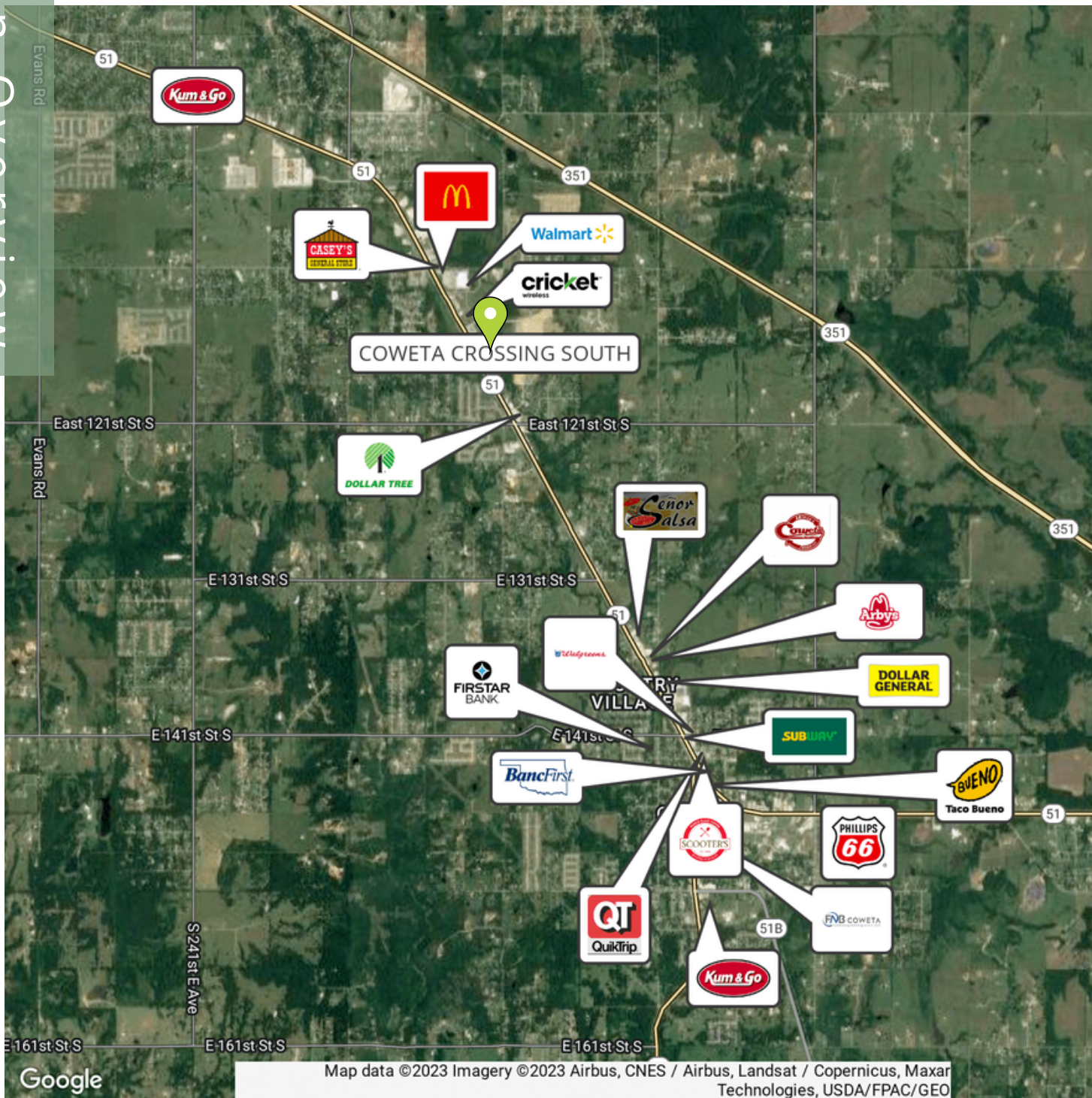
FOR MORE
INFORMATION
CONTACT:

DREW DOSSEY
SALES ASSOCIATE
918.740.7707
DDOSSEY@MCGRAWOK.COM

ANDREW LEACH
SALES ASSOCIATE
918.388.6148 | 918.388.6148
ALEACH@MCGRAWCP.COM

McGraw
COMMERCIAL PROPERTIES

COWETA CROSSING SOUTH

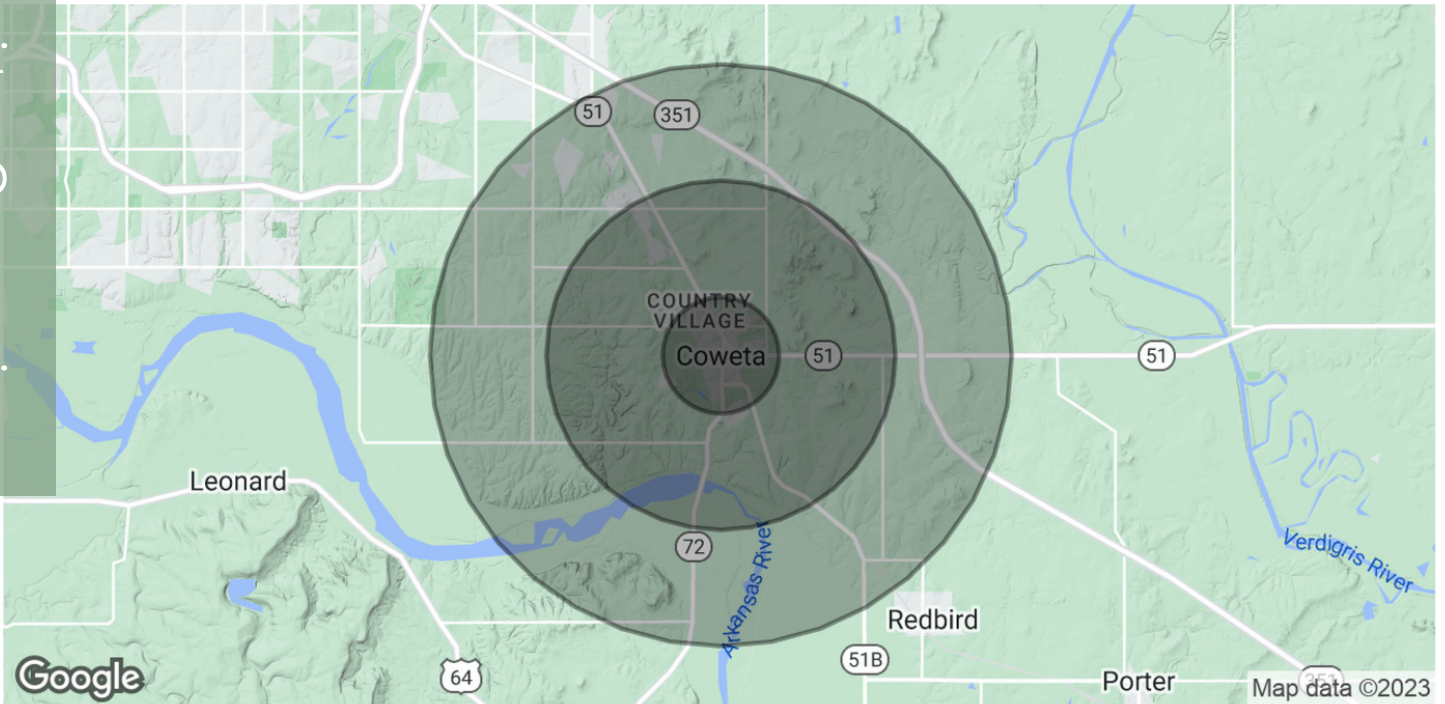


FOR MORE
INFORMATION
CONTACT:

DREW DOSSEY
SALES ASSOCIATE
918.740.7707
DDOSSEY@MCGRAWOK.COM

ANDREW LEACH
SALES ASSOCIATE
918.388.6148 | 918.388.6148
ALEACH@MCGRAWCP.COM

COWETA CROSSING SOUTH



POPULATION	1 MILE	3 MILES	5 MILES
Total Population	2,547	9,852	16,227
Average Age	35.4	35.8	37.8
Average Age (Male)	33.1	34.0	35.4
Average Age (Female)	36.2	36.0	38.9
HOUSEHOLDS & INCOME	1 MILE	3 MILES	5 MILES
Total Households	1,002	3,828	6,216
# of Persons per HH	2.5	2.6	2.6
Average HH Income	\$59,267	\$62,807	\$70,743
Average House Value	\$133,842	\$154,717	\$185,850

* Demographic data derived from 2020 ACS - US Census

FOR MORE
INFORMATION
CONTACT:

DREW DOSSEY
SALES ASSOCIATE
918.740.7707
DDOSSEY@MCGRAWOK.COM

ANDREW LEACH
SALES ASSOCIATE
918.388.6148 | 918.388.6148
ALEACH@MCGRAWCP.COM

