



FOR LEASE PROFESSIONAL OFFICE SPACE 722 South Denton Tap Road Coppell, TX

LOCATION:

This two-story office building is ideally located on South Denton Tap Road near Belt Line Road. Easy access to I-635 (LBJ Fwy), SH 121 (Sam Rayburn Tollway), SH 161 (George Bush Turnpike), and I-35E. Minutes to DFW International Airport.

SIZE:

- Suite 130 – 938 RSF
- Suite 140 – 1,255 RSF
- Suite 200 – 1,239 RSF

RATE:

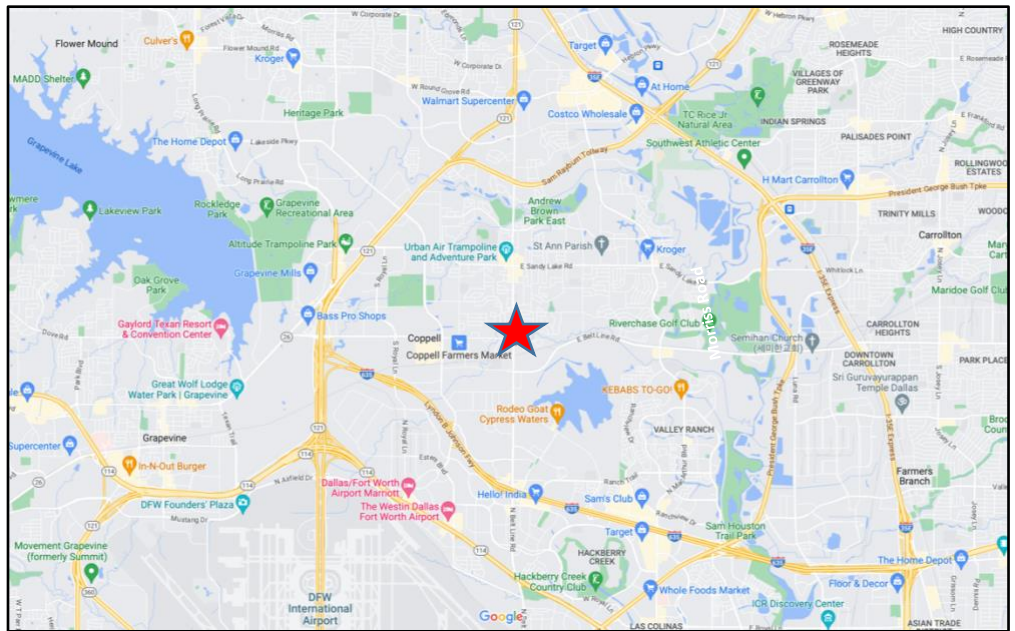
- See Broker for pricing

HIGHLIGHTS:

- Move-in ready, second-generation office spaces
- In-suite janitorial included
- Great windows; picturesque setting, surrounded by mature trees.
- Close to other professional office and medical buildings with proximity to nearby restaurant and retail offerings.

AVAILABILITY:

- Suite 130 – February 2025
- Suite 140 – Immediate
- Suite 200 – Immediate



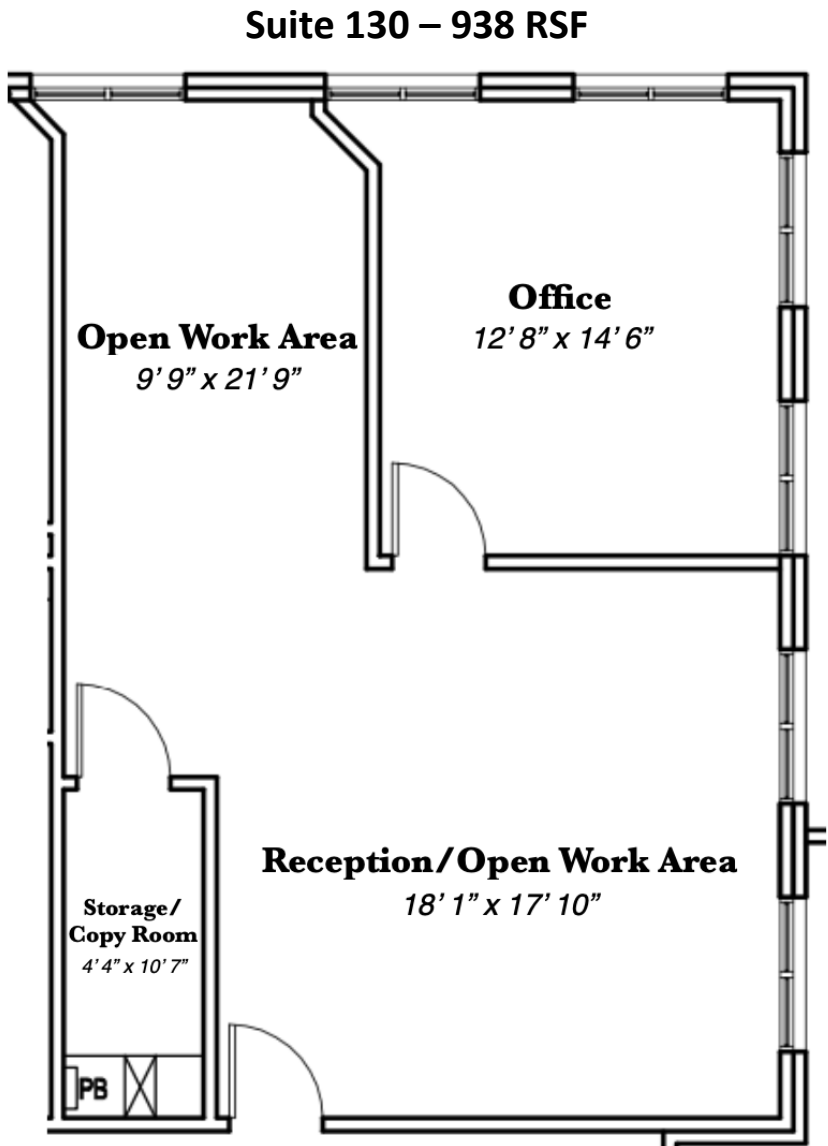
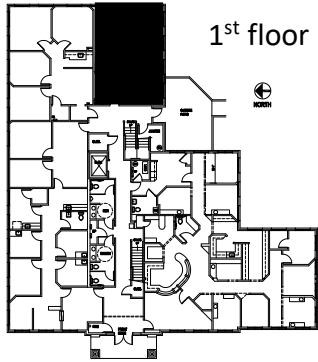
FOR INFORMATION:

Diana Pergande | Phyllis Garcia
972.899.1851 | Diana@BridgeRealtyTexas.com | Phyllis@BridgeRealtyTexas.com
www.BridgeRealtyTexas.com
400 Parker Square, Suite 270H | Flower Mound, TX 75028

This information is believed to be accurate, but no representation or warranty, express or implied, as to its accuracy or completeness is made by any party. The presentation of this property is submitted subject to errors, omissions, change of price or prior sale or lease, or withdrawal without notice.



FLOOR PLAN – SUITE 150
722 South Denton Tap Road
Coppell, TX

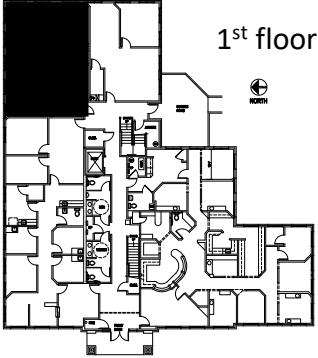


**Dimensions are approximate wall to wall measurements*

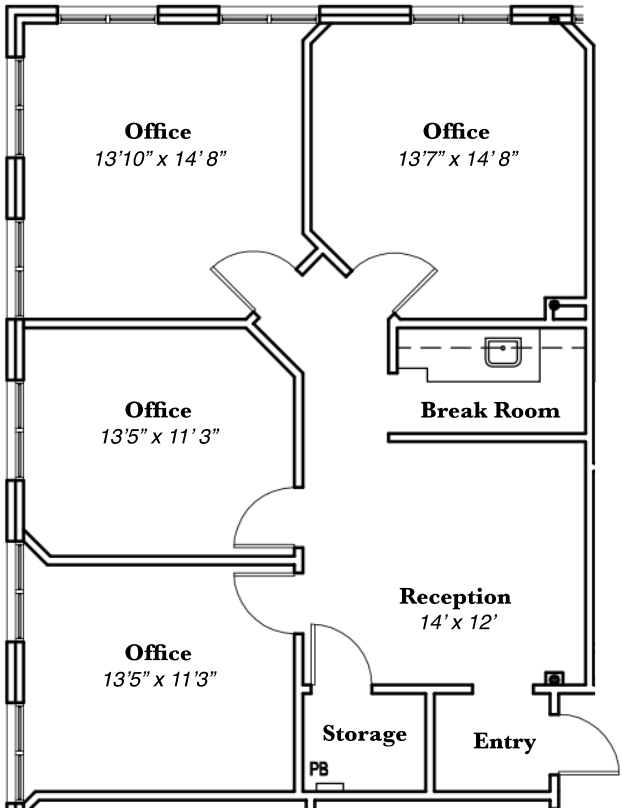


FLOOR PLAN – SUITE 150

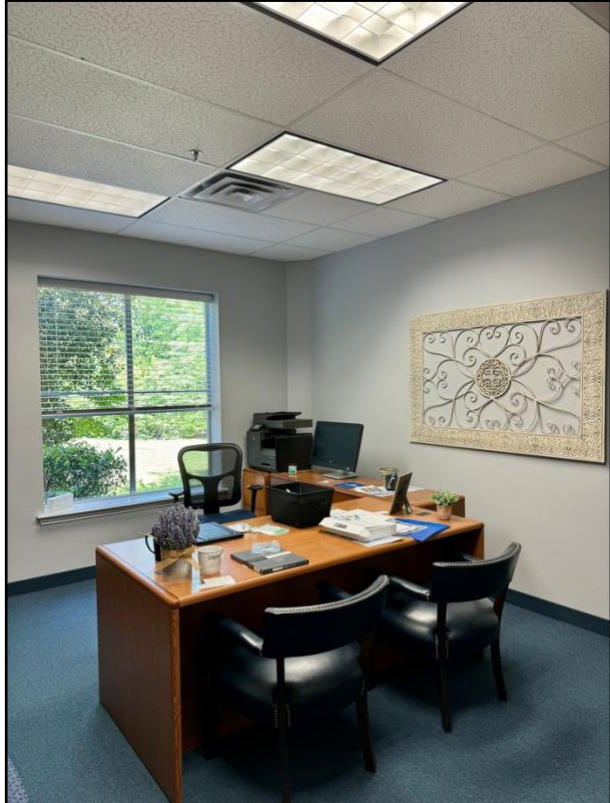
722 South Denton Tap Road
Coppell, TX



Suite 140 – 1,255 RSF



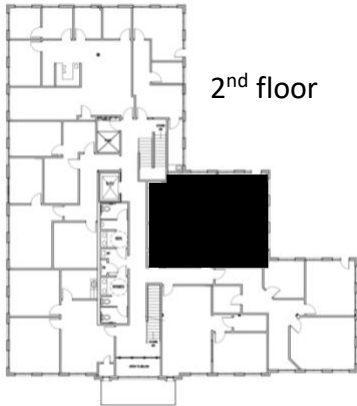
**Dimensions are approximate wall to wall measurements*



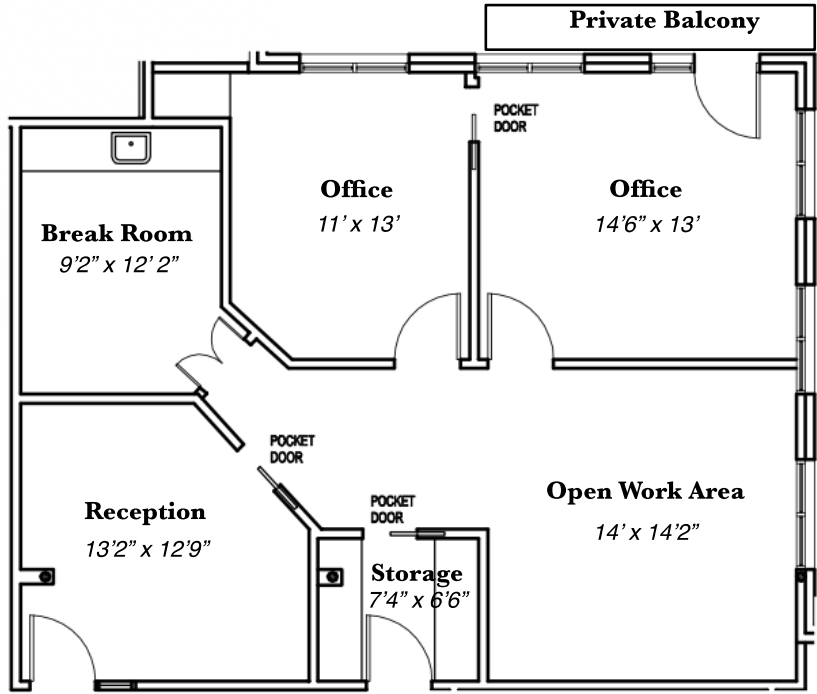


FLOOR PLAN – SUITE 200

722 South Denton Tap Road
Coppell, TX



722 S Denton Tap Road, Suite 200, Coppell, TX
1,239 RSF



**Dimensions are approximate wall to wall measurements*





BUILDING PHOTOS

722 South Denton Tap Road
Coppell, TX

