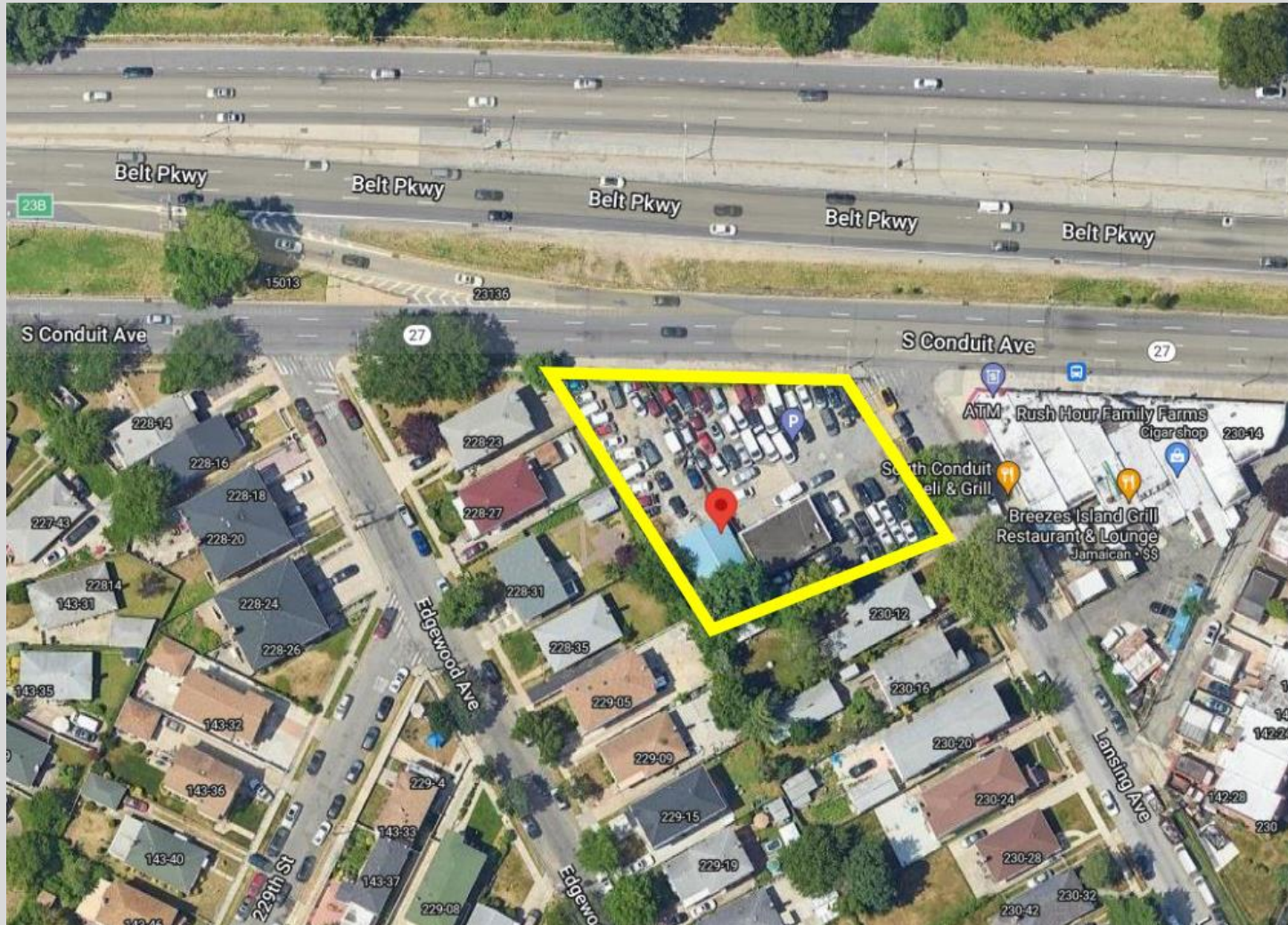


# 229-20 S Conduit Avenue

Brookville, NY 11413 | QUEENS

LAND FOR LEASE



## FOR LEASE

ASKING PRICE: INQUIRE



# PROPERTY OVERVIEW

229-20 S Conduit Avenue, Brookville



FOR LEASE

ASKING PRICE: INQUIRE

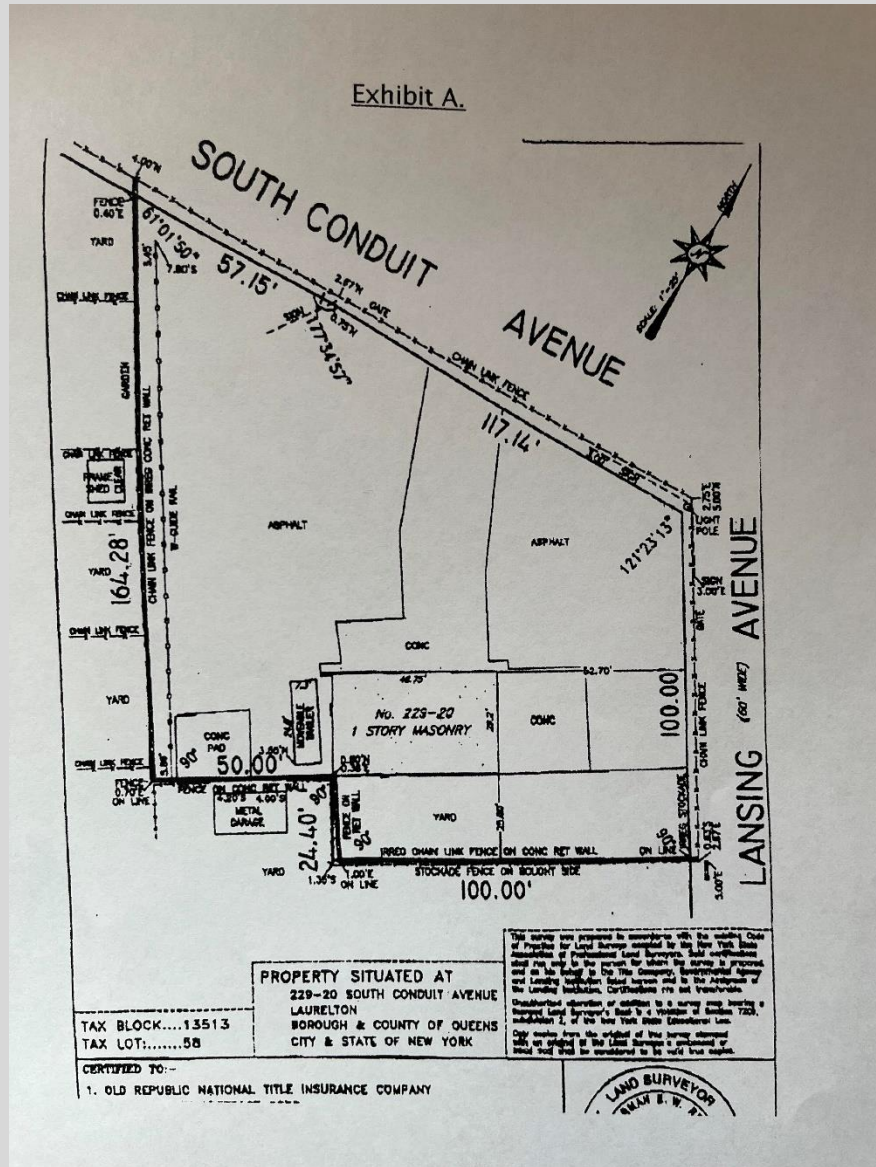
## PROPERTY SUMMARY

Property Address	229-20 S Conduit Avenue
Cross Streets	Edgewood Avenue & Lansing Avenue
Neighborhood	Laurelton
UNIT INFORMATION	
Total Land SF	28,710 SF (approx.)
Total Land Frontage	175 FT (approx.)
Property Curb Cut	1
Garage Building SF	1,363 SF (approx.)
Garage Building Ceiling Height	15 FT (approx.)
Garage Building Frontage	10 FT (approx.)
Number of Garage Building Bays	2
Possession	Arranged



# PROPERTY HIGHLIGHT

229-20 S Conduit Avenue, Brookville





# PROPERTY HIGHLIGHT

229-20 S Conduit Avenue, Brookville



## #1

Land for Lease

- **28,710 SF of land available**
- **Existing retail building**
- **One curb-cut for parking needs**
- **Seeking long term Tenant**

## #2

Tremendous Signage Opportunity,  
**175' FT of frontage facing the Belt Parkway, 60' FT of billboard signage in place**

## #3

Central Location to Public Transit

- **Less than 5 Miles away from JFK Airport**
- **Fronting Belt Parkway eastbound egress**
- **One block from the Q85 bus stop**

# 229-20 S Conduit Avenue

Brookville, NY 11413 | QUEENS

LAND FOR LEASE

## CONTACT EXCLUSIVE AGENT

### FOR SALE INQUIRIES:

Jake Rosen

Director of Brokerage Services

[jake.rosen@md2pg.com](mailto:jake.rosen@md2pg.com)

O: 646-328-7249

C: 914-380-2732