

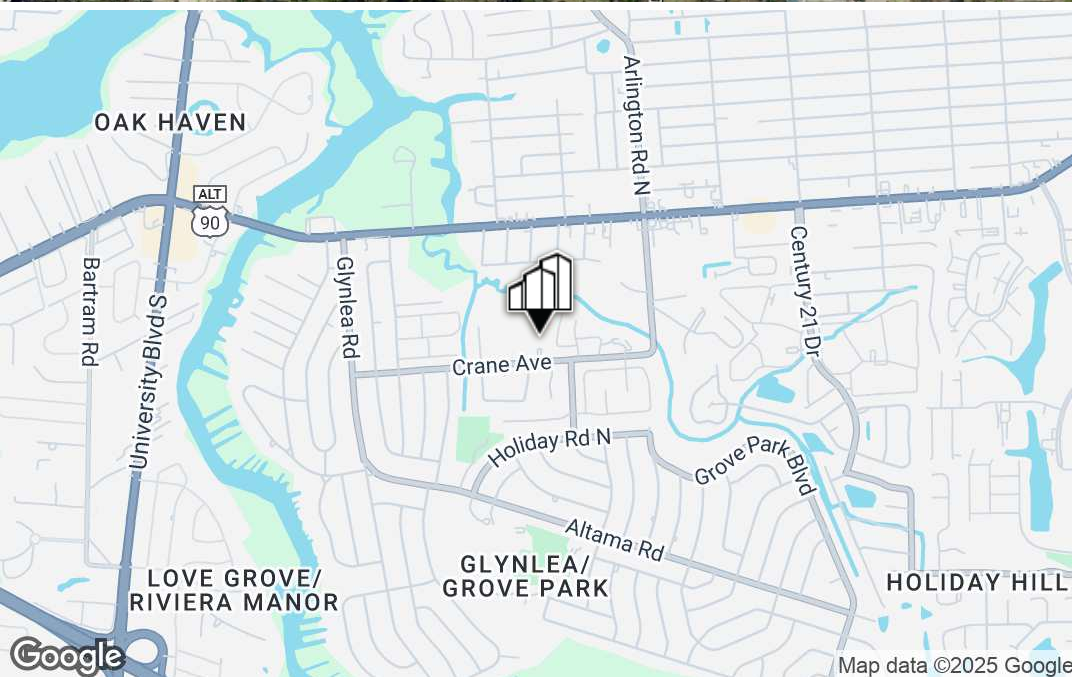
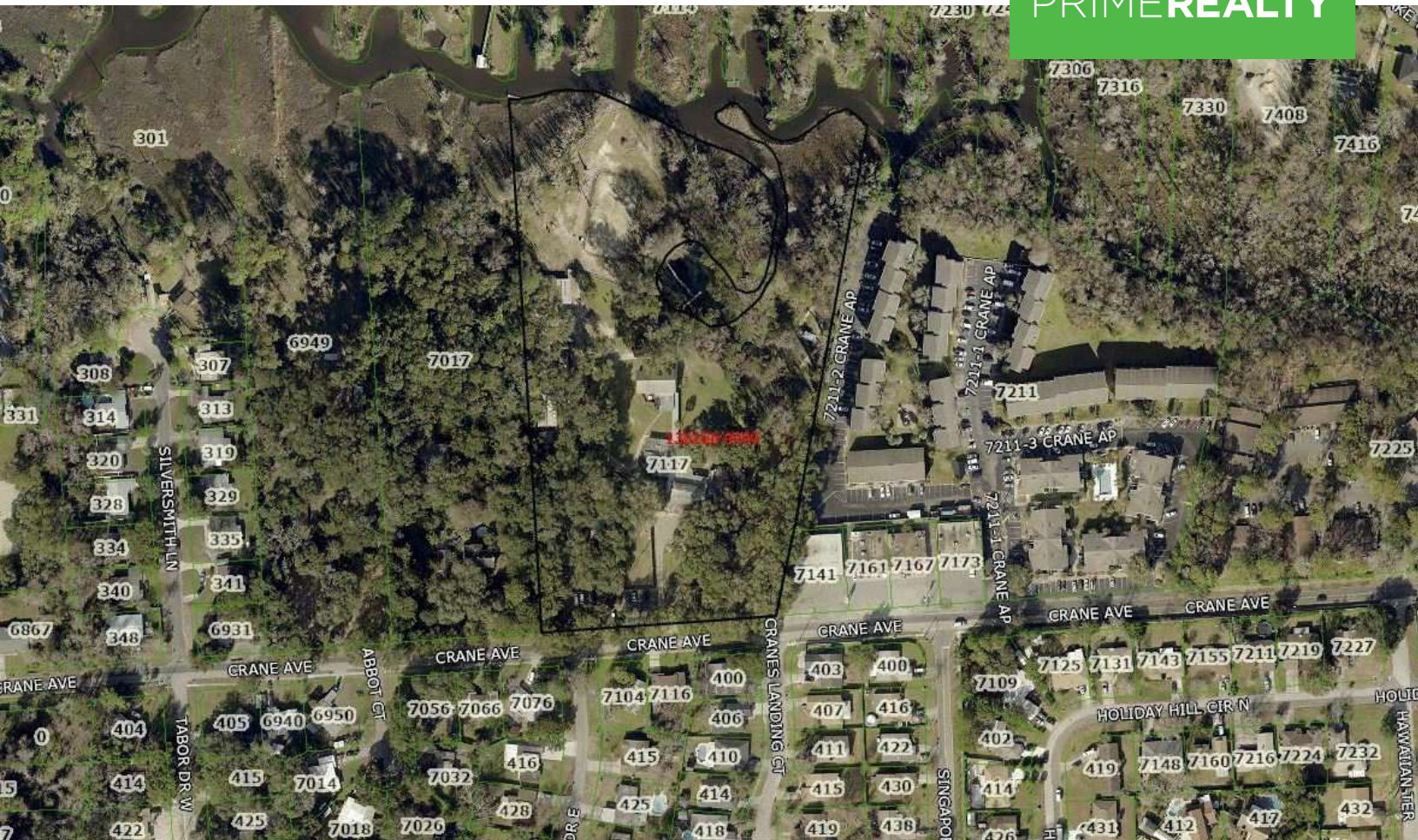
# LAND FOR SALE

## DEVELOPMENT SITE

7117 CRANE AVE, JACKSONVILLE, FL 32216



PRIMEREALTY



### For More Information:

**Tyler Saldutti**

Chief Executive Officer  
904.373.0578  
[tsaldutti@primerealtyinc.com](mailto:tsaldutti@primerealtyinc.com)

**Brent Dennis**

Director  
904.930.4299  
[bdennis@primerealtyinc.com](mailto:bdennis@primerealtyinc.com)

**Conrad Boylan**

Director  
904.515.2590  
[cboylan@primerealtyinc.com](mailto:cboylan@primerealtyinc.com)

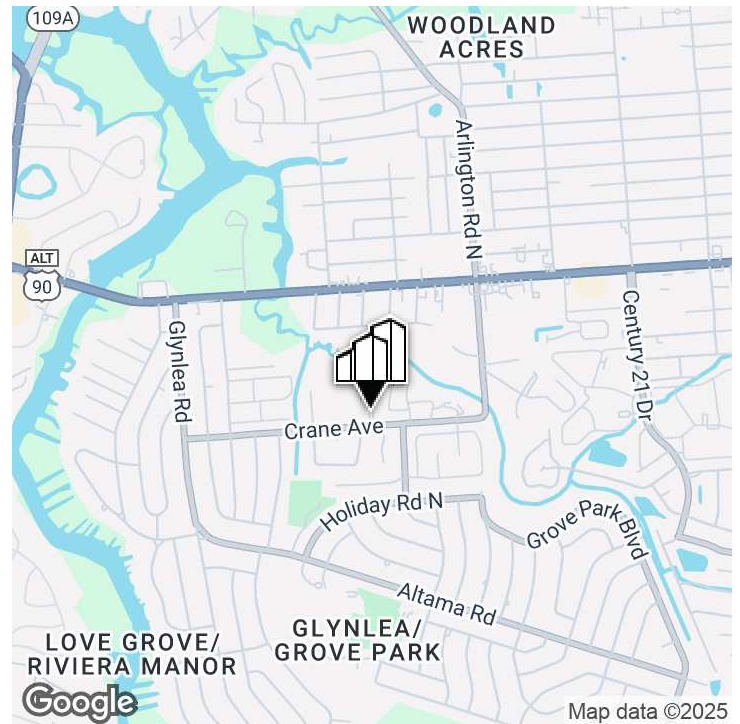
4237 Salisbury Road North, Building 2, Suite 212 | Jacksonville, FL 32216 | 904.352.1400

Office | Industrial | Retail | Multi-Family

All information has been gathered from sources deemed to be reliable. Provided information may be independently verified and shall not be solely relied upon.



7117 Crane Ave, Jacksonville, FL 32216



## OFFERING SUMMARY

Sale Price: TBD

Lot Size: 8.51 Acres

Year Built: 1945

Zoning: RMD-A and RMD-D

Market: Jacksonville

Submarket: Grove Park

## PROPERTY OVERVIEW

Prime Realty is proud to bring this site to market for potential development. Centrally located and boasting water views, this site may lend itself to apartment, assisted living, townhome, single family home, school, religious or other development.

## PROPERTY HIGHLIGHTS

- Neighboring property may be available for creating a larger assemblage.

**Tyler Saldutti**  
Chief Executive Officer  
904.373.0578  
tsaldutti@primerealtyinc.com

**Brent Dennis**  
Director  
904.930.4299  
bdennis@primerealtyinc.com

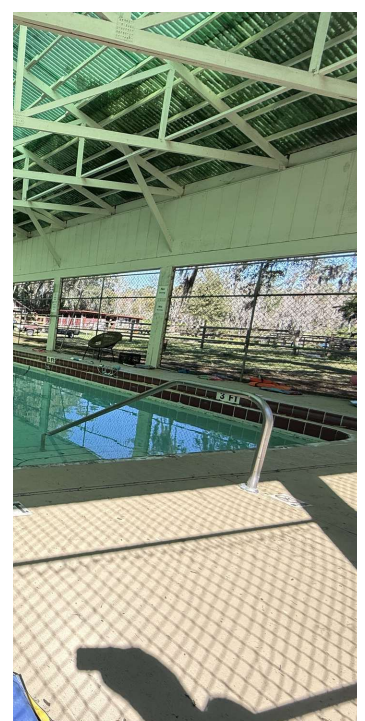
**Conrad Boylan**  
Director  
904.515.2590  
cboyland@primerealtyinc.com



# Land For Sale | Development Site



7117 Crane Ave, Jacksonville, FL 32216



**Tyler Saldutti**  
Chief Executive Officer  
904.373.0578  
[tsaldutti@primerealtyinc.com](mailto:tsaldutti@primerealtyinc.com)

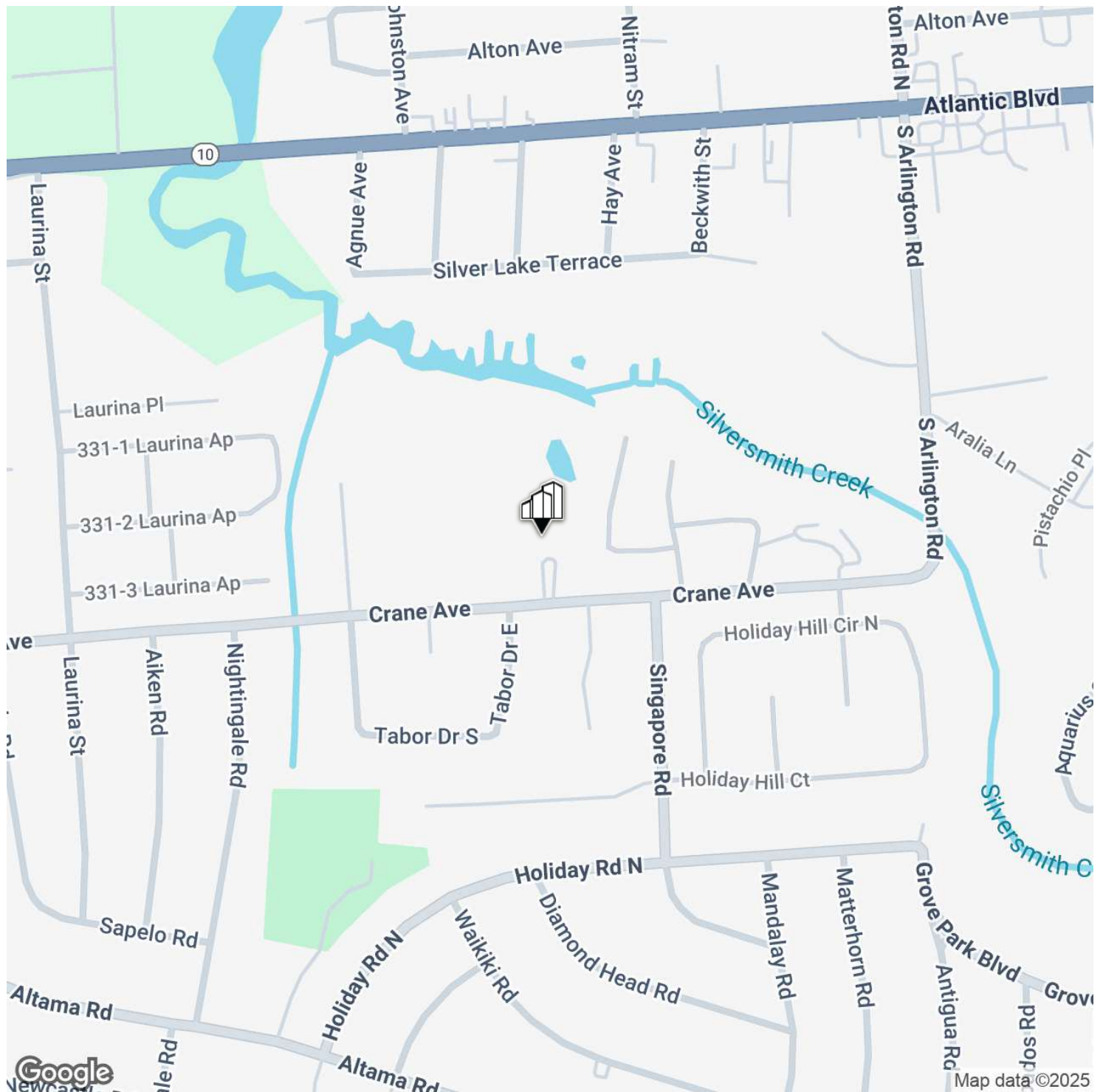
**Brent Dennis**  
Director  
904.930.4299  
[bdennis@primerealtyinc.com](mailto:bdennis@primerealtyinc.com)

**Conrad Boylan**  
Director  
904.515.2590  
[cboyland@primerealtyinc.com](mailto:cboyland@primerealtyinc.com)

4237 Salisbury Road North, Building 2, Suite 212 | Jacksonville, FL 32216 | 904.352.1400  
Office | Industrial | Retail | Multi-Family



7117 Crane Ave, Jacksonville, FL 32216

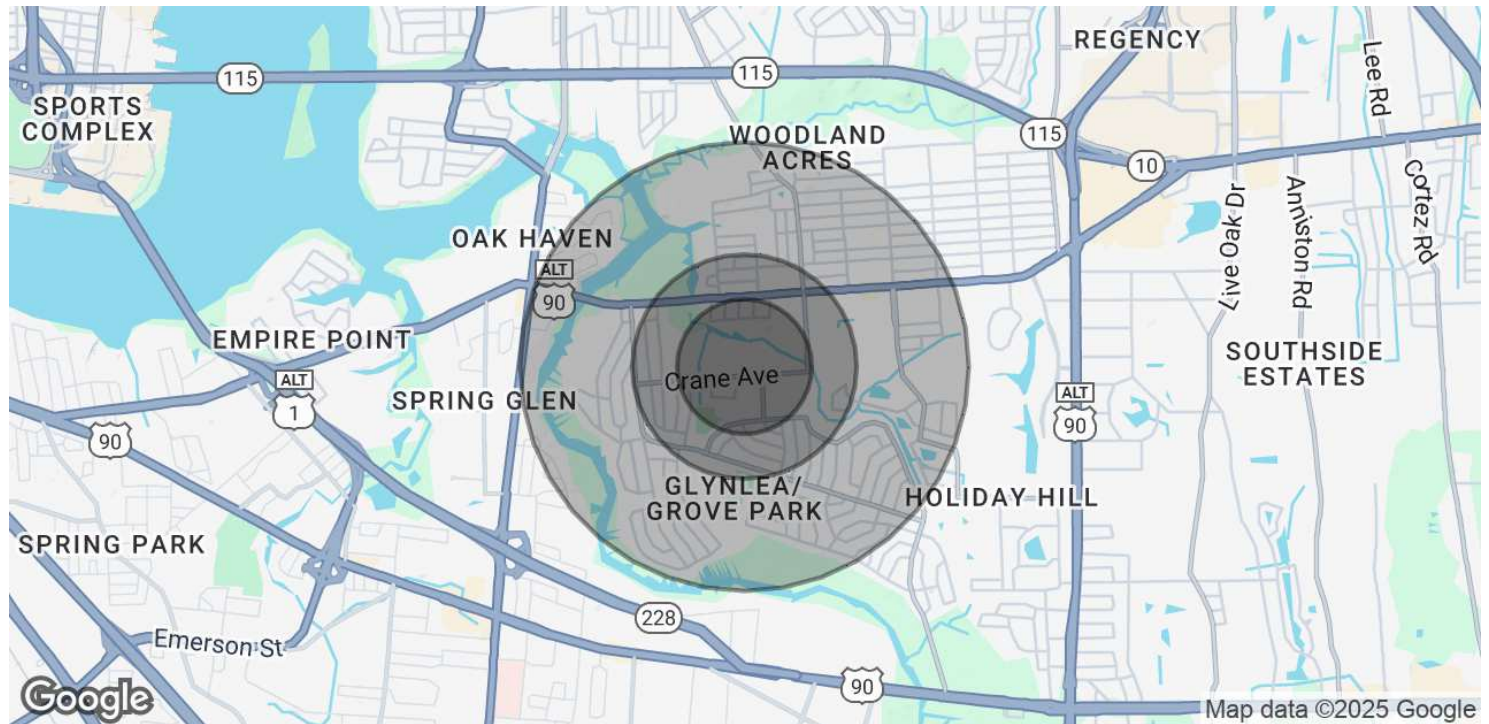


**Tyler Saldutti**  
Chief Executive Officer  
904.373.0578  
tsaldutti@primerealtyinc.com

**Brent Dennis**  
Director  
904.930.4299  
bdennis@primerealtyinc.com

**Conrad Boylan**  
Director  
904.515.2590  
cboyland@primerealtyinc.com

7117 Crane Ave, Jacksonville, FL 32216



POPULATION	0.3 MILES	0.5 MILES	1 MILE
Total Population	1,228	3,076	12,964
Average Age	39	40	39
Average Age (Male)	39	39	38
Average Age (Female)	40	41	40
HOUSEHOLDS & INCOME	0.3 MILES	0.5 MILES	1 MILE
Total Households	540	1,334	5,555
# of Persons per HH	2.3	2.3	2.3
Average HH Income	\$68,437	\$76,262	\$80,285
Average House Value	\$338,270	\$316,898	\$263,809

Demographics data derived from AlphaMap

**Tyler Saldutti**  
Chief Executive Officer  
904.373.0578  
tsaldutti@primerealtyinc.com

**Brent Dennis**  
Director  
904.930.4299  
bdennis@primerealtyinc.com

**Conrad Boylan**  
Director  
904.515.2590  
cboyland@primerealtyinc.com