

32901 – 32931 GRATIOT AVENUE  
ROSEVILLE, MICHIGAN



**SIGNATURE  
ASSOCIATES**  
KNOW SIGNATURE | KNOW RESULTS

RETAIL FOR LEASE  
2,255 – 4,994 Square Feet Available

**GRATIOT CROSSING**



## PROPERTY FEATURES

- 2,255 – 4,994 square feet available
- Excellent retail and restaurant opportunities are available with a drive-thru
- Located on the SWC of 14 Mile Road and Gratiot Avenue
- Surrounded by National retailers
- Close proximity to Macomb Mall along very busy corridor
- Zoned B-3
- 63 shared parking spaces
- Lease Rate: \$30.00/sq. ft. NNN



For more information, please contact:

**MARVIN PETROUS**  
(248) 359 0647  
mpetrous@signatureassociates.com

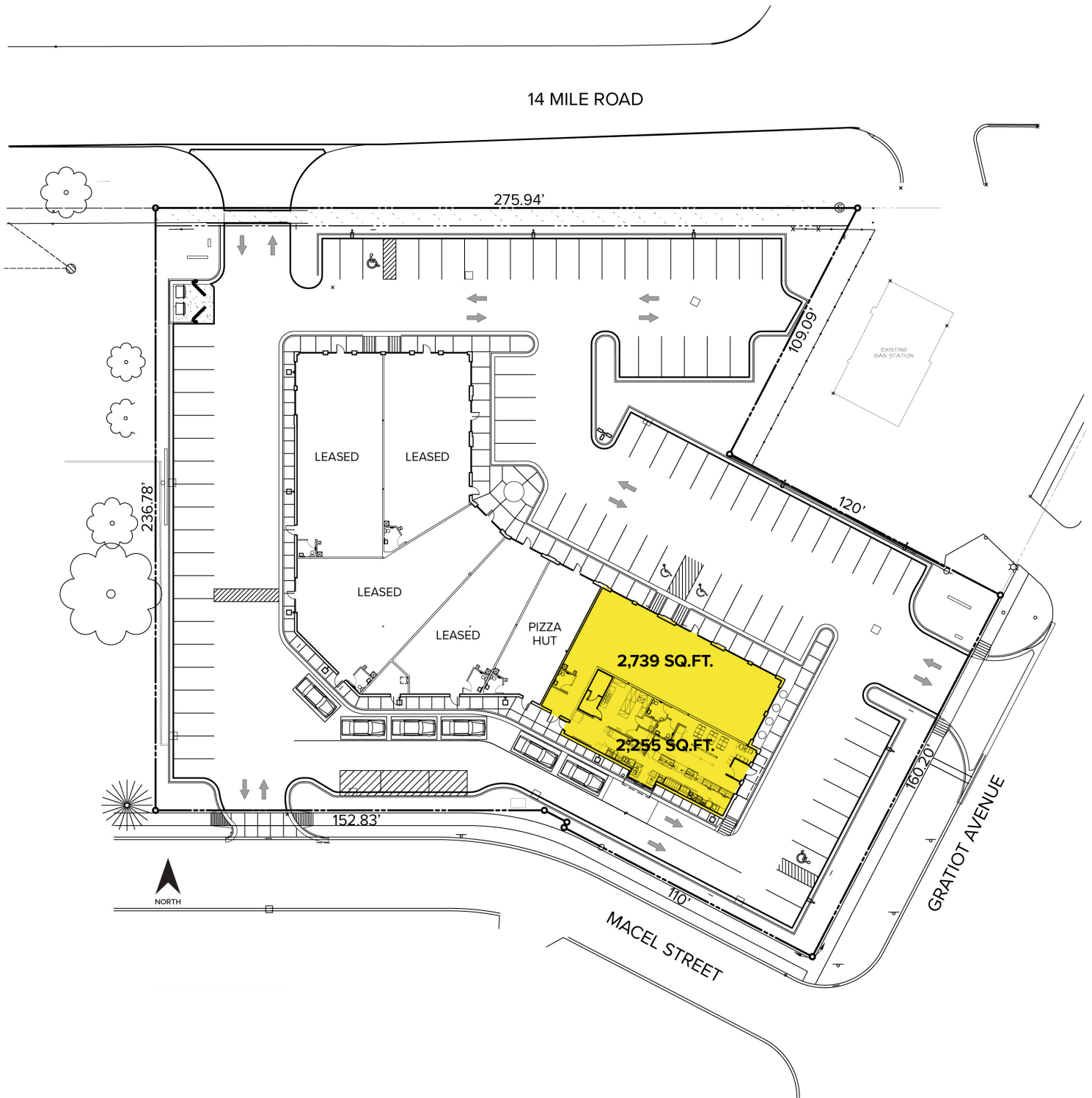
**SIGNATURE ASSOCIATES**  
One Towne Square, Suite 1200  
Southfield, MI 48076  
www.signatureassociates.com

# 32901-32931 Gratiot Avenue – Roseville, Michigan

Retail For Lease

2,255-4,994  
Square Feet  
AVAILABLE

## Site Plan



For more information, please contact:

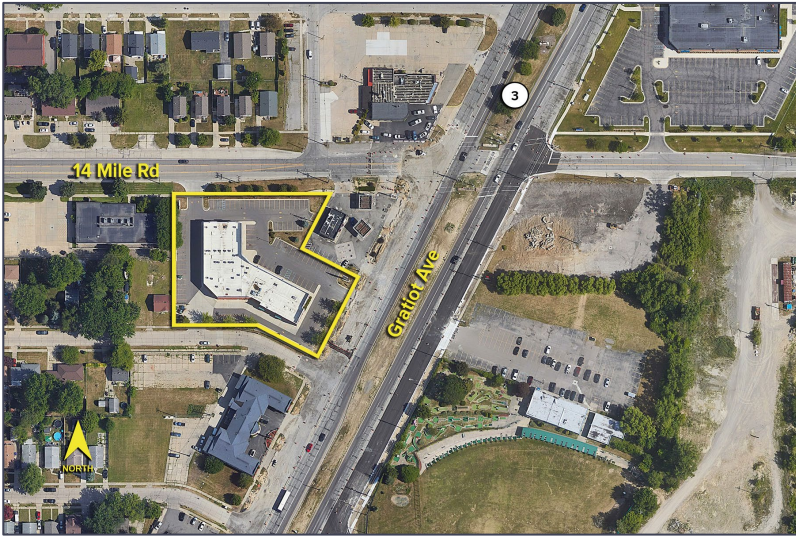
**MARVIN PETROUS**  
(248) 359 0647  
mpetrous@signatureassociates.com

**SIGNATURE ASSOCIATES**  
One Towne Square, Suite 1200  
Southfield, MI 48076  
www.signatureassociates.com

# 32901-32931 Gratiot Avenue – Roseville, Michigan

## Retail For Lease

2,255-4,994  
Square Feet  
AVAILABLE

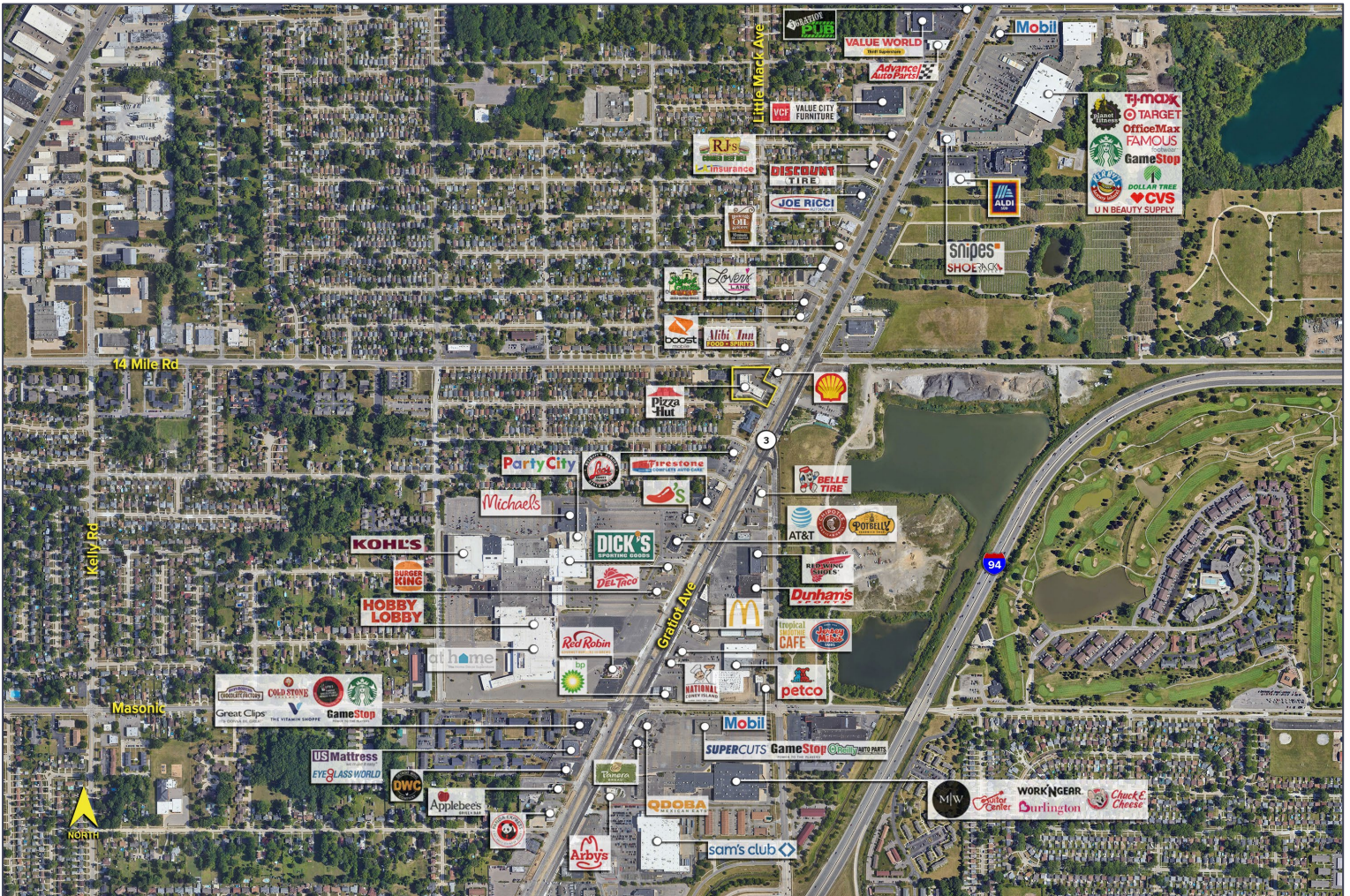


### DEMOGRAPHICS

	POPULATION	MED. HH INCOME
1 MILE	11,548	\$64,105
3 MILE	111,557	\$69,183
5 MILE	260,499	\$73,110

### TRAFFIC COUNTS (TWO-WAY)

41,793	Gratiot Ave. N. of 14 Mile Rd.
42,654	Gratiot Ave. S. of 14 Mile Rd.
11,331	14 Mile Rd. Btw I-94 & Gratiot Ave.
17,467	14 Mile Rd. Btw Gratiot Ave. & Groesbeck Hwy



For more information, please contact:

**MARVIN PETROUS**  
(248) 359 0647  
mpetrous@signatureassociates.com

**SIGNATURE ASSOCIATES**  
One Towne Square, Suite 1200  
Southfield, MI 48076  
www.signatureassociates.com