

**MIXED USE
 RETAIL
 APARTMENTS**

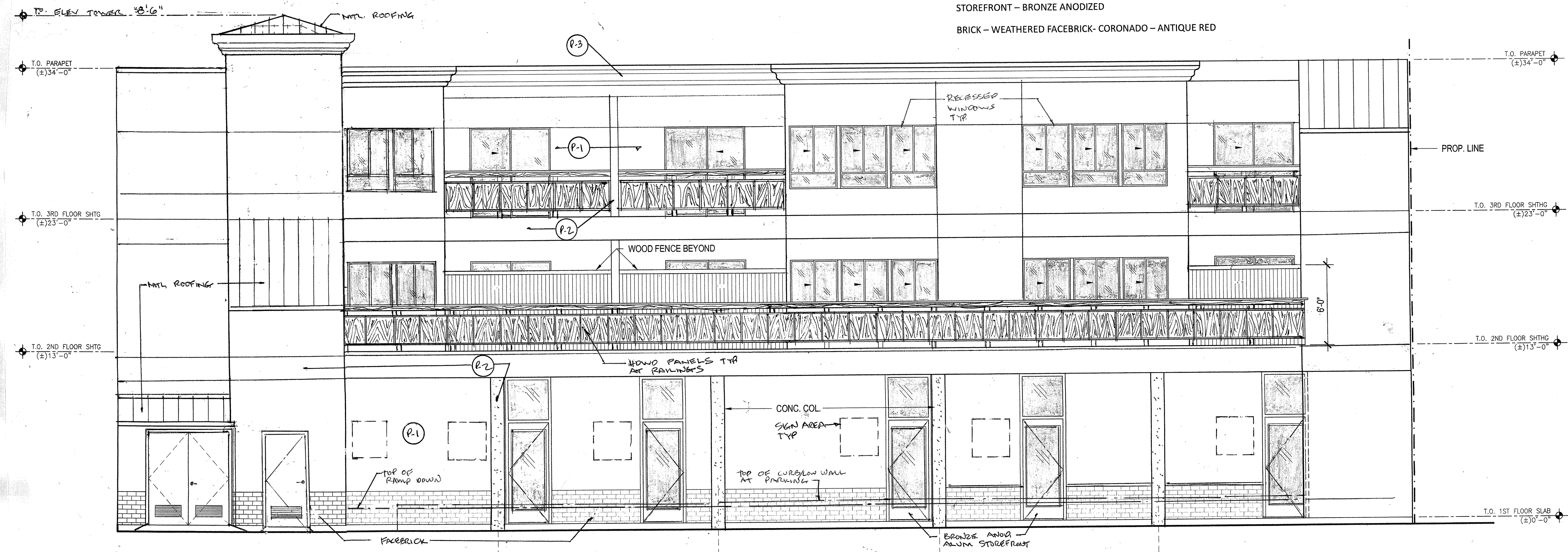
4134 FOOTHILL BLVD
 OAKLAND, CA
 94601



① ELEVATION ALONG FOOTHILL BLVD. SOUTH

1/4" = 1'-0"

- FINISHES**
- ROOFING: METAL ROOFING; COLOR EQUAL TO SEGOVIA RED 1288
 - EXTERIOR PAINT:
 - P-1 WALLS - BENJAMIN MOORE - BASKING RIDGE BEIGE 1158
 - P-2 WALLS - BENJAMIN MOORE - BIRCHWOOD 1161
 - P-3 CORNICE AND TRIM - BENJAMIN MOORE - DUSTY TRAIL 1157
 - DECORATIVE WOOD PANELS - CHERRY
 - STOREFRONT - BRONZE ANODIZED
 - BRICK - WEATHERED FACEBRICK- CORONADO - ANTIQUE RED



② ELEVATION ALONG PARKING - NORTH

1/4" = 1'-0"

REVISIONS		
NO.	DATE	DESCRIPTION
1	1/14/18	ISSUE TO CITY FOR DESIGN APPROVAL
2	5/14/2018	REVISION PER CITY PLANNING

SHEET TITLE
**SOUTH & NORTH
 EXTERIOR
 ELEVATIONS**

JOB NO: 16013
 SCALE: 1/4" = 1'-0" DATE: 1-14-18
 DRAWN BY: KS/TA
 FILE:
 DRAWING NO: 6 OF 8
 SHEET NO:

A-3.0