



## INDUSTRIAL MIXED-USE 5835 VENTURE PARK, KALAMAZOO

Located just off Stadium Drive and only 0.5 miles from US-131, this versatile 11,696 SF industrial mixed-used building offers a strategic location with excellent visibility. The property features 5,696 SF of office space and 6,000 SF of warehouse space.

Sitting on 1.54 acres, this site includes 26 parking spaces and ceiling heights ranging from 10' to 24'. The building is well-equipped for logistics and storage, with one dock door and two overhead doors (12' x 14' and 12' x 12').



### AGENT INFORMATION

**Chad VanDerwall**  
Chad@KalamazooCRE.com

**Office:**  
269-888-2755  
501 West Willard Street  
Kalamazoo, MI 49007  
www.KalamazooCRE.com



**FOR SALE**

5835 Venture Park  
Kalamazoo, Michigan

### The PROPERTY

**Location:** 5835 Venture Park  
**City, State:** Kalamazoo, Michigan  
**Parcel Number:** 05-25-153-190  
**Acres:** 1.54  
**Zoning:** COMM

### The BUILDING

**Building Size:** 11,696 SF  
**Ceiling Heights:** 10'-24'  
**Overhead Doors:** (1) 12' x 14'  
(1) 12' x 12'  
**Dock Doors:** 1  
**Parking:** 26 spaces



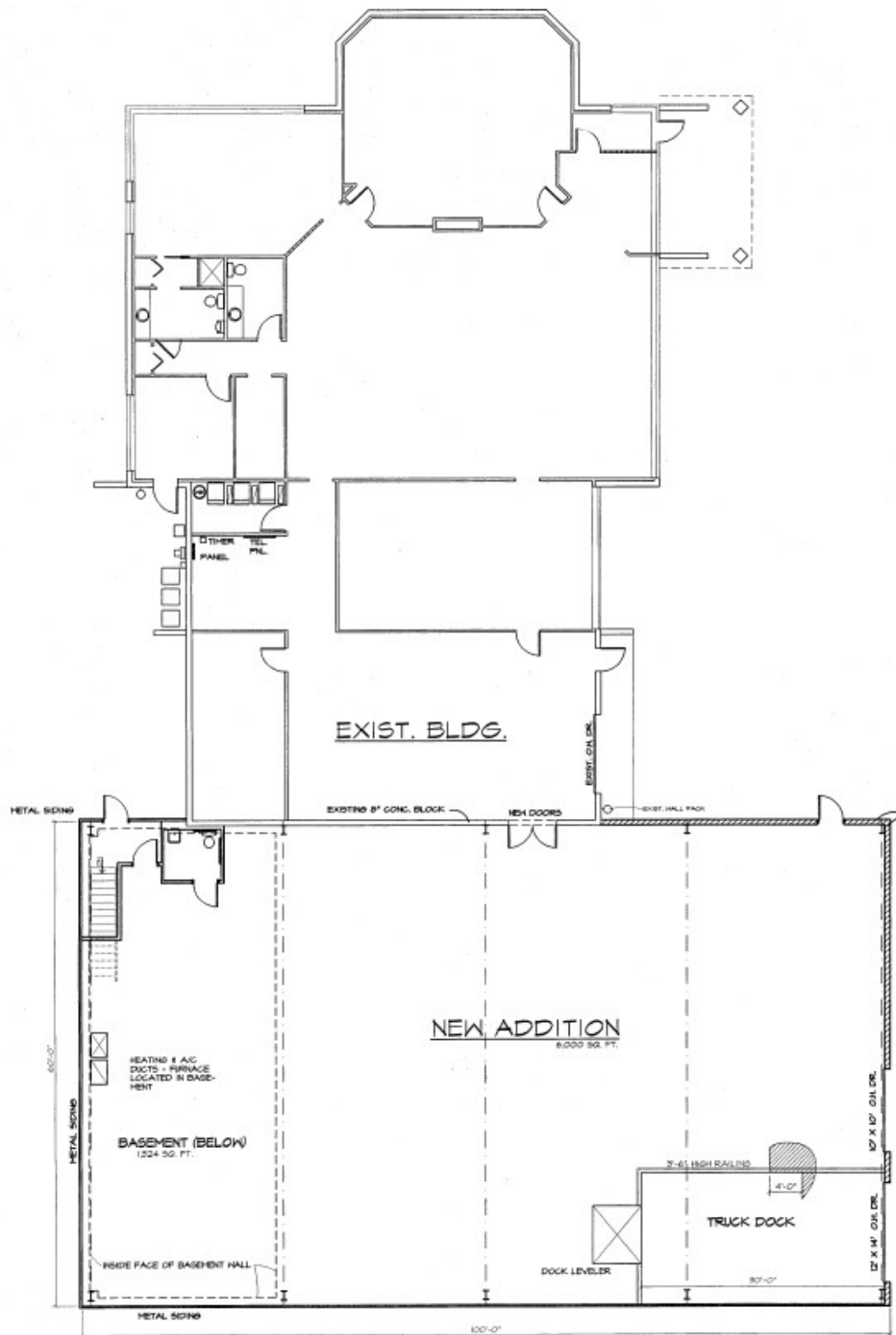


**FOR SALE**

5835 Venture Park  
Kalamazoo, Michigan







5835 Venture Park  
Kalamazoo, Michigan





**FOR SALE**  
5835 Venture Park  
Kalamazoo, Michigan





**FOR SALE**  
5835 Venture Park  
Kalamazoo, Michigan

