



# 795 LEE STREET

ATLANTA, GA 30310

**For Sale**  
**2,600 +/- SF**  
**Mixed Use Commercial Building**

**STEVE RATCHFORD, SIOR, CCIM**

*Senior Vice President*  
404.942.2003  
sratchford@kingindustrial.com

**BRIAN BRATTON, SIOR**

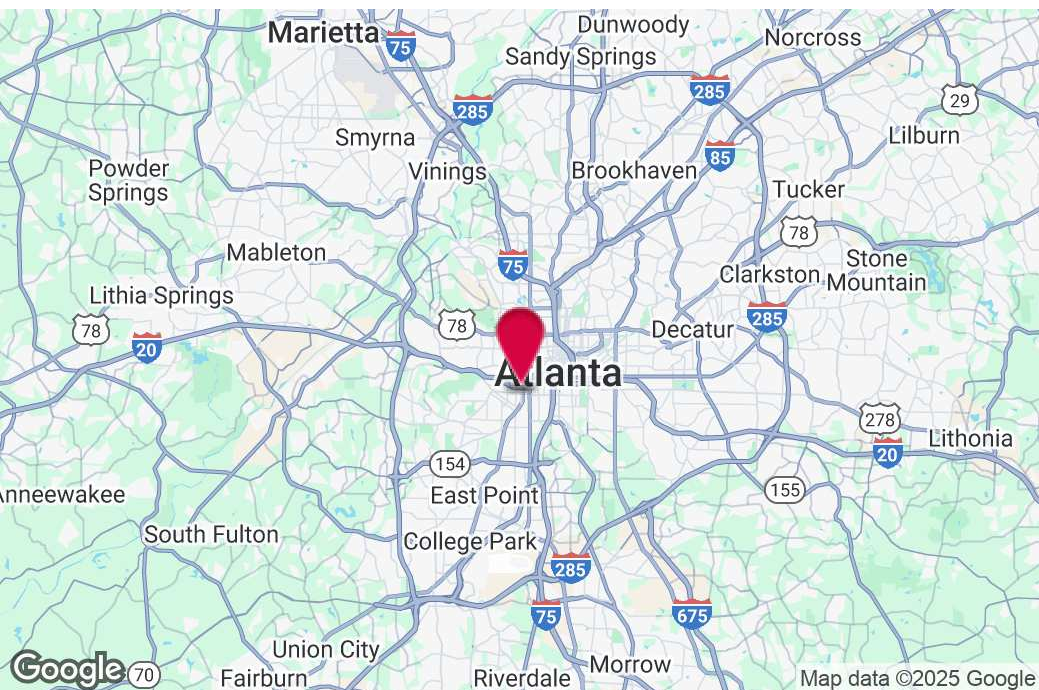
*Senior Vice President*  
404.942.2028  
bbratton@kingindustrial.com

**King** Industrial  
Realty, Inc.

Industrial • Commercial • Investment  
404.942.2000 | [kingindustrial.com](http://kingindustrial.com)



FOR SALE  
2,600 +/- SF  
MIXED USE  
COMMERCIAL  
BUILDING



## PROPERTY HIGHLIGHTS

- On 0.25 Acres
- Zoned MRC-1-C
- Mezzanine Office
- Kitchen Area
- 3 Bathrooms
- Current Use: Coffee Shop/Studio/Office

## BUILDING SUMMARY

Lot Size:	0.25 Acres
Building Size:	2,600 SF

### STEVE RATCHFORD, SIOR, CCIM

Senior Vice President

404.942.2003

sratchford@kingindustrial.com

*Every effort has been made to provide accurate information, but no liability is assumed for errors or omissions.*

### BRIAN BRATTON, SIOR

Senior Vice President

404.942.2028

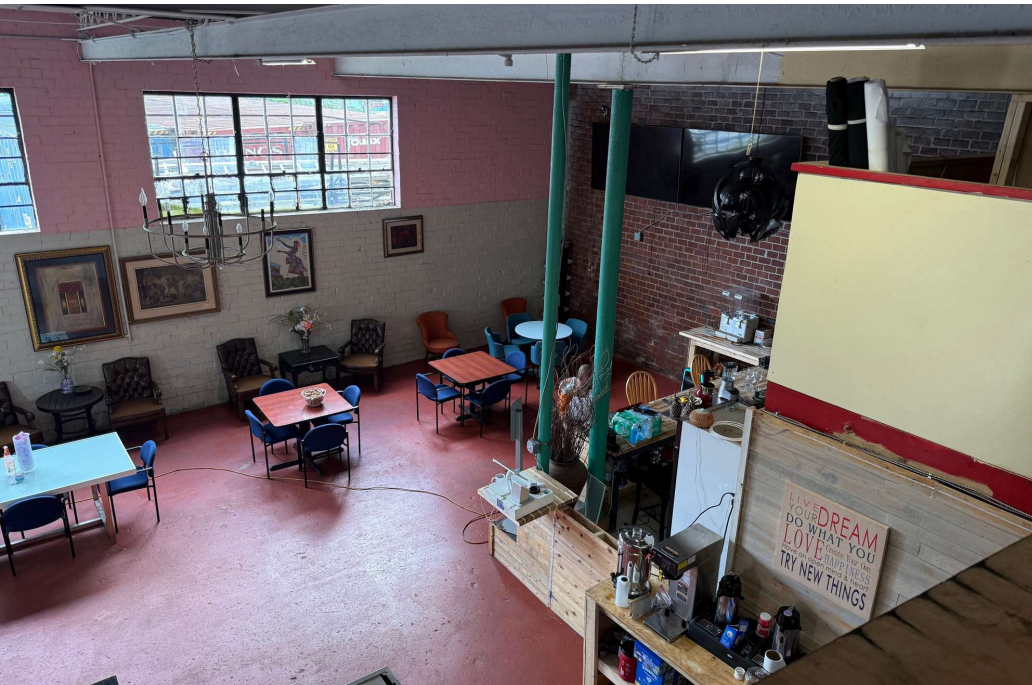
bbratton@kingindustrial.com



Industrial • Commercial • Investment  
404.942.2000 | kingindustrial.com



# ADDITIONAL PHOTOS



**STEVE RATCHFORD, SIOR, CCIM**

Senior Vice President

404.942.2003

[sratchford@kingindustrial.com](mailto:sratchford@kingindustrial.com)

*Every effort has been made to provide accurate information, but no liability is assumed for errors or omissions.*

**BRIAN BRATTON, SIOR**

Senior Vice President

404.942.2028

[bbratton@kingindustrial.com](mailto:bbratton@kingindustrial.com)

**king** Industrial Realty, Inc. **CORFAC** INTERNATIONAL

Industrial • Commercial • Investment  
404.942.2000 | [kingindustrial.com](http://kingindustrial.com)



# ZONING MAP

Site

Brecher

Z-15-072

MRC-1-C

**STEVE RATCHFORD, SIOR, CCIM**

Senior Vice President

404.942.2003

sratchford@kingindustrial.com

**BRIAN BRATTON, SIOR**

Senior Vice President

404.942.2028

bbratton@kingindustrial.com

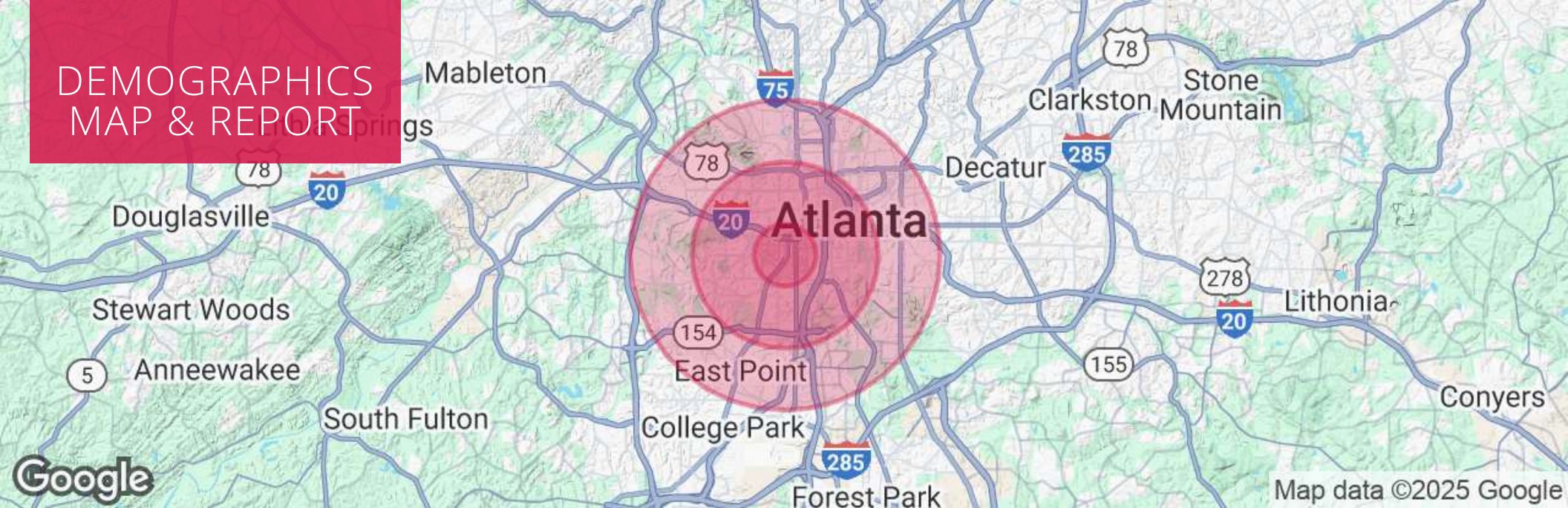
*Every effort has been made to provide accurate information, but no liability is assumed for errors or omissions.*

**king** Industrial  
Realty, Inc.

**CORFAC**  
INTERNATIONAL

Industrial • Commercial • Investment  
404.942.2000 | kingindustrial.com

# DEMOGRAPHICS MAP & REPORT



## POPULATION

	1 MILE	3 MILES	5 MILES
Total Population	15,165	125,388	335,570
Average Age	36	37	37
Average Age (Male)	36	36	36
Average Age (Female)	37	37	37

## HOUSEHOLDS & INCOME

	1 MILE	3 MILES	5 MILES
Total Households	6,597	52,382	153,250
# of Persons per HH	2.3	2.4	2.2
Average HH Income	\$70,629	\$77,793	\$102,944
Average House Value	\$418,246	\$390,295	\$483,889

**STEVE RATCHFORD, SIOR, CCIM**

Senior Vice President

404.942.2003

sratchford@kingindustrial.com

**BRIAN BRATTON, SIOR**

Senior Vice President

404.942.2028

bbratton@kingindustrial.com

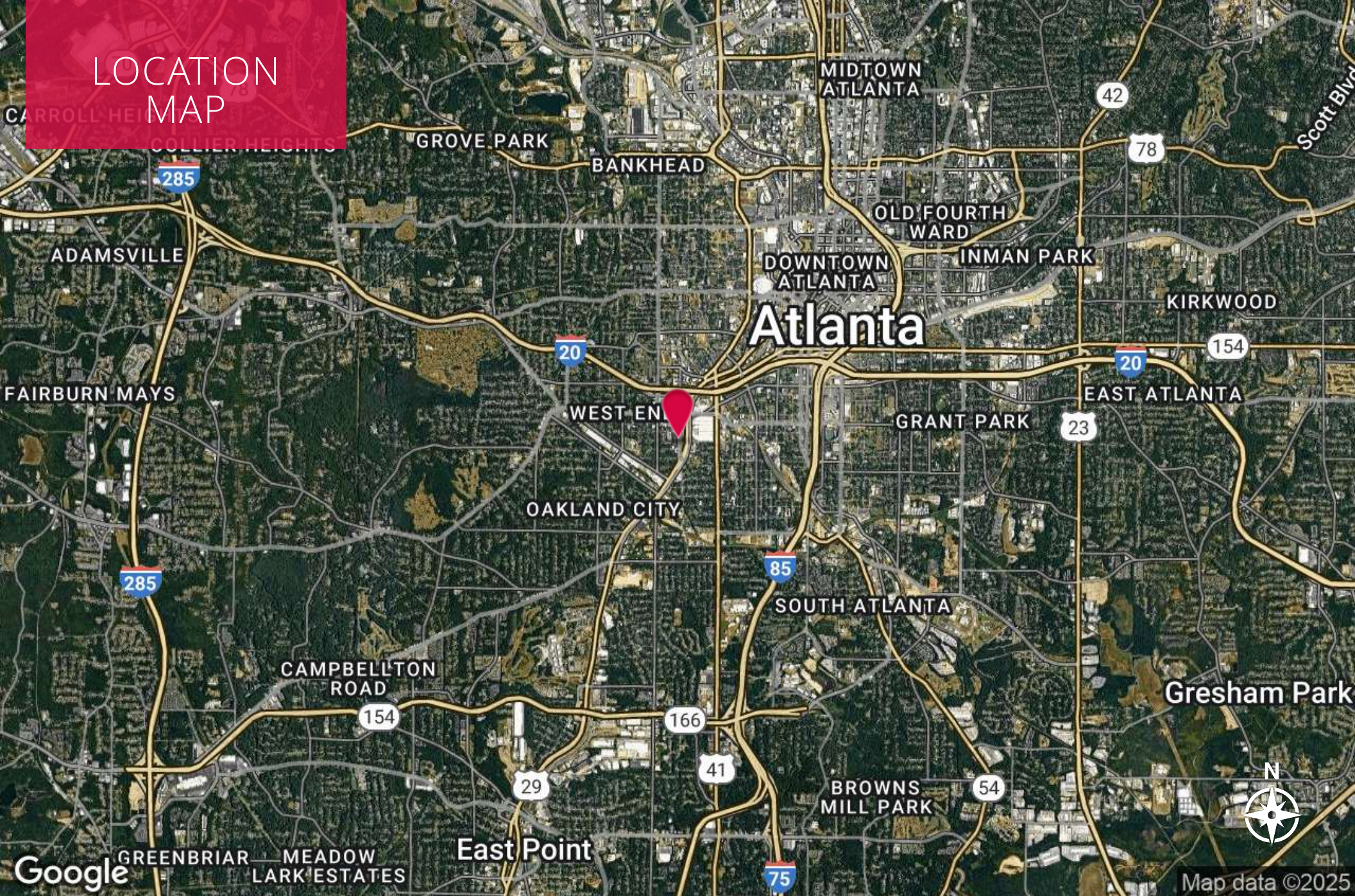
Every effort has been made to provide accurate information, but no liability is assumed for errors or omissions.

**king** Industrial  
Realty, Inc. **CORFAC**  
INTERNATIONAL

Industrial • Commercial • Investment  
404.942.2000 | kingindustrial.com



# LOCATION MAP



**STEVE RATCHFORD, SIOR, CCIM**

Senior Vice President

404.942.2003

[sratchford@kingindustrial.com](mailto:sratchford@kingindustrial.com)

*Every effort has been made to provide accurate information, but no liability is assumed for errors or omissions.*

**BRIAN BRATTON, SIOR**

Senior Vice President

404.942.2028

[bbratton@kingindustrial.com](mailto:bbratton@kingindustrial.com)

**king** Industrial  
Realty, Inc. **CORFAC**  
INTERNATIONAL

Industrial • Commercial • Investment  
404.942.2000 | [kingindustrial.com](http://kingindustrial.com)





EXCLUSIVELY LISTED BY:

**STEVE RATCHFORD, SIOR, CCIM**

*Senior Vice President*  
sratchford@kingindustrial.com  
404.942.2003

**BRIAN BRATTON, SIOR**

*Senior Vice President*  
bbratton@kingindustrial.com  
404.942.2028

**King** Industrial  
Realty, Inc.

Industrial • Commercial • Investment  
404.942.2000 | kingindustrial.com