

For Sale | 1765-1775 Buerkle Road | White Bear Lake, MN

Multi-Tenant Office Warehouse Space For Sale Opportunity



NEWMARK

Dan Friedner

Senior Managing Director
612-430-9991
dan.friedner@nmrk.com

Jay Chmielecki

Senior Managing Director
612-430-9982
jay.chmielecki@nmrk.com

Patrick Cullen

Associate Director
612-440-0045
patrick.cullen@nmrk.com

Property Overview

The Offering

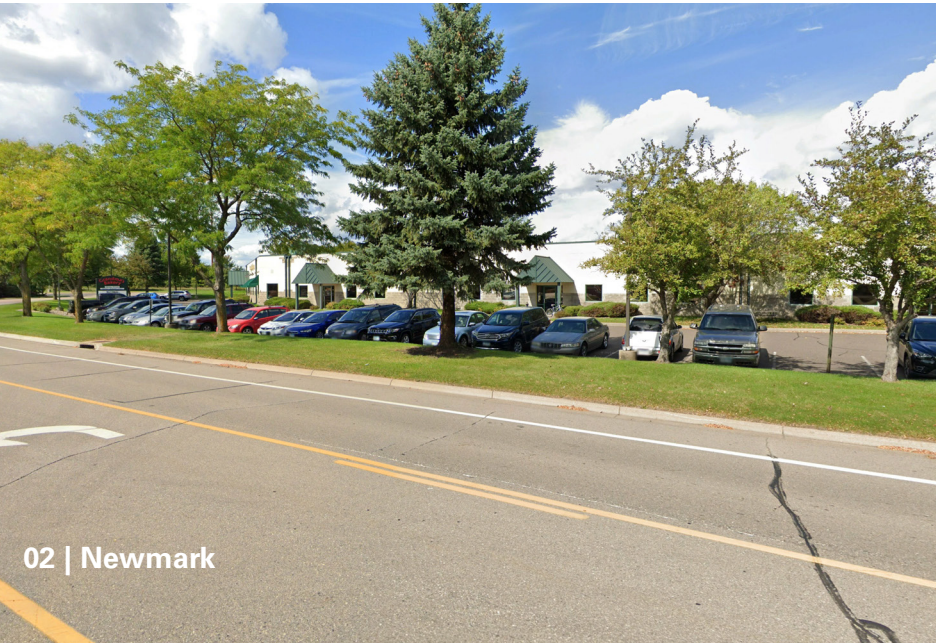
Newmark is pleased to present 1765-1775 Buerkle Road in White Bear Lake available for sale. The property offers a premier multi-tenant, or single tenant opportunity for industrial, warehouse and office users. 1765-1775 Buerkle Road contains approximately 22,025 square feet situated on 1.87 acres and offers convenient access to I-694 and Highway 61. Please contact a member of our team for more property details or to schedule a tour.

★ **Food Production Improvements In-Place**

★ **100% Climate Controlled**

★ **67 Parking Stalls**

★ **New Roof in 2019**



02 | Newmark

Details

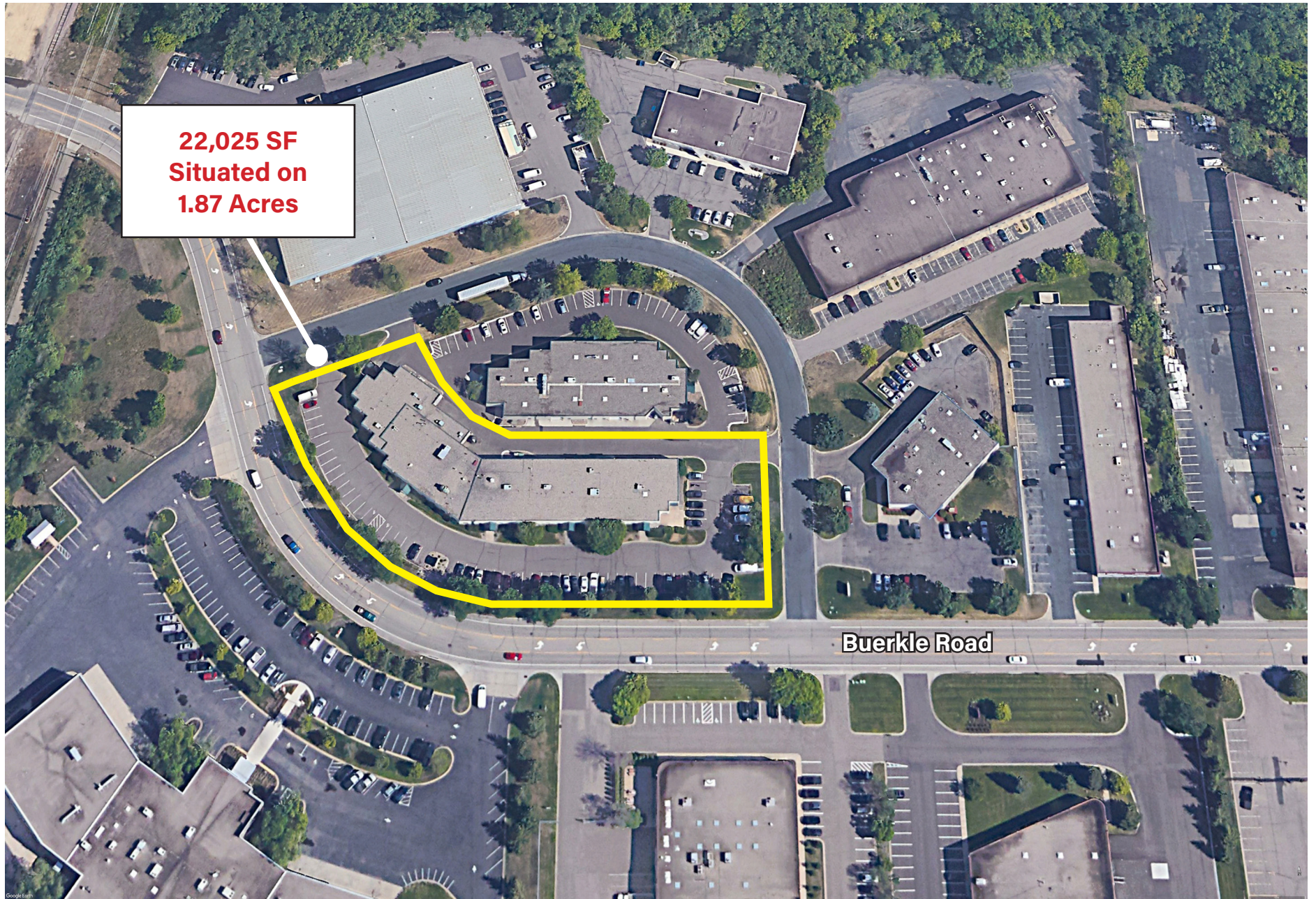
Address	1765-1775 Buerkle Road White Bear Lake
Building Size	4,478 SF- Office <u>17,547 SF-Warehouse</u> 22,025 SF - Total
Ramsey County PID	34-30-22-42-00-07
Site Size	1.87 Acres
Year Built	1992
Clear Height	16'
Loading	Two (2) Drive-In Doors One (1) Dock Door Ability to Add More
Sale Price	Negotiable
2025 Est. RE Taxes	\$65,146.00



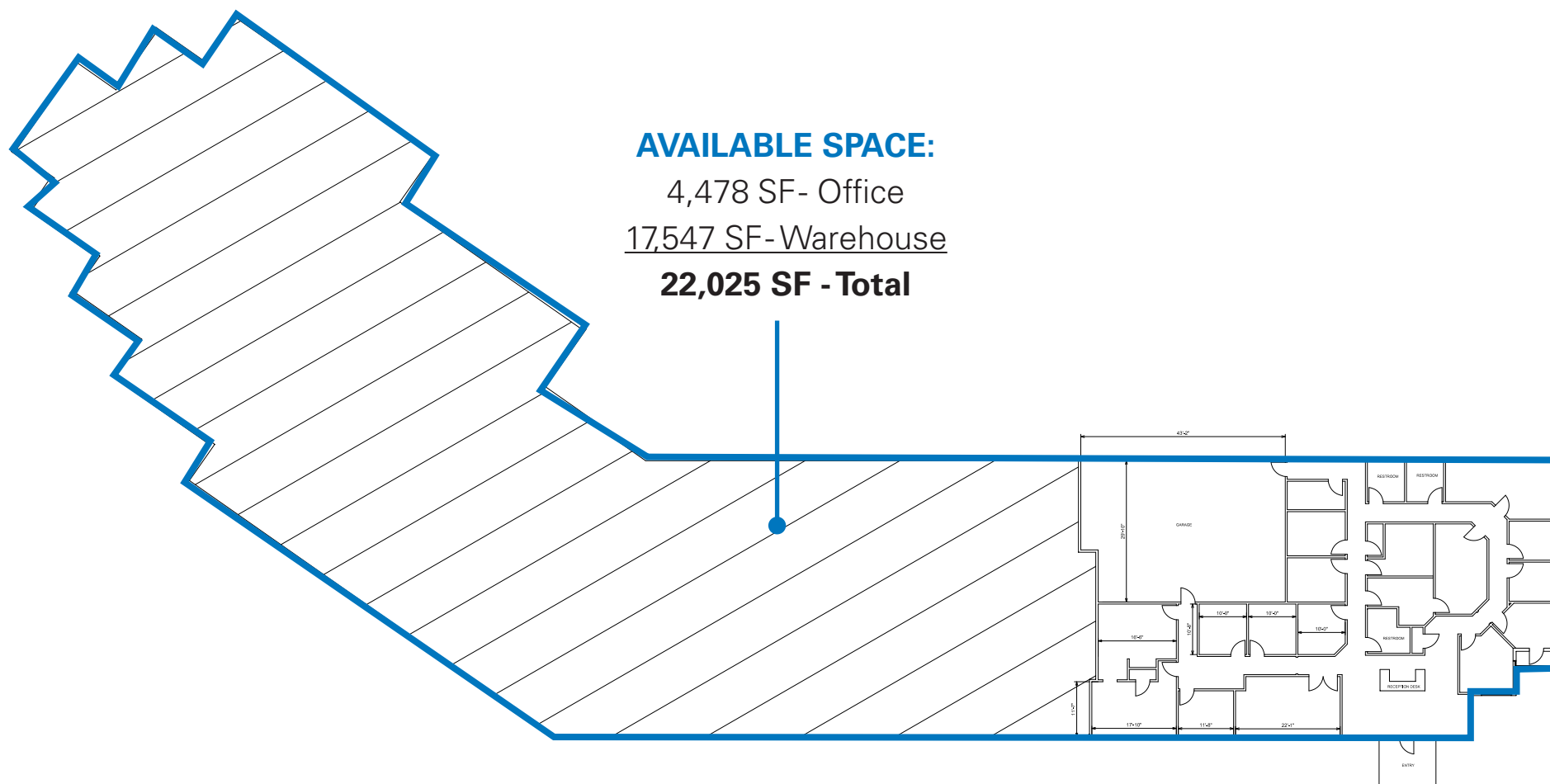
Aerial Map



Aerial View Map



5



NEWMARK

Dan Friedner
Senior Managing Director
612-430-9991
dan.friedner@nmrk.com

Jay Chmielewski
Senior Managing Director
612-430-9982
jay.chmielewski@nmrk.com

Patrick Cullen
Associate Director
612-440-0045
patrick.cullen@nmrk.com