

# FOR LEASE



**5711 GREENDALE ROAD**

**Lease Rate:  
Negotiable**

## PROPERTY OVERVIEW

Well-positioned, freestanding warehouse in the Lakeside neighborhood. Excellent opportunity for a commercial or residential service company, and a variety of other industrial/flex uses.

## DEMOGRAPHICS

	3 MILES	5 MILES	10 MILES
<b>Households:</b>	38,841	108,788	275,232
<b>Population:</b>	85,682	251,019	658,998
<b>Avg HH Income:</b>	\$108,232	\$108,094	\$117,249

## PROPERTY HIGHLIGHTS

- Three bay doors for convenient access
- 14-foot ceiling height
- 0.5-acre outdoor storage yard
- Close proximity to I-64 and I-95
- Built out office suite

## AVAILABLE SPACES

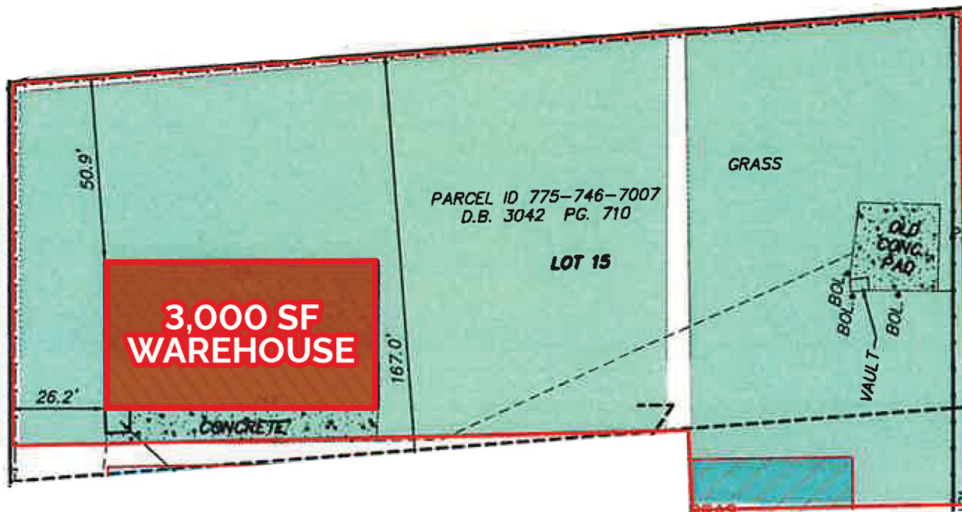
**Warehouse Space** 3,000 SF

FOR FURTHER INFORMATION, PLEASE CONTACT:  
CHRIS MESSERSMITH • [chris.messersmith@divaris.com](mailto:chris.messersmith@divaris.com) • 804.616.3434





**FOR  
LEASE**



FOR FURTHER INFORMATION, PLEASE CONTACT:  
**CHRIS MESSERSMITH** • [chris.messersmith@divaris.com](mailto:chris.messersmith@divaris.com) • 804.616.3434

