

# 185 BLEECKER

Between MacDougal & Sullivan Streets



## DETAILS:

Ground Level.....600 SF

Lower Level.....400 SF

Frontage.....20'

Ceiling Height.....10'

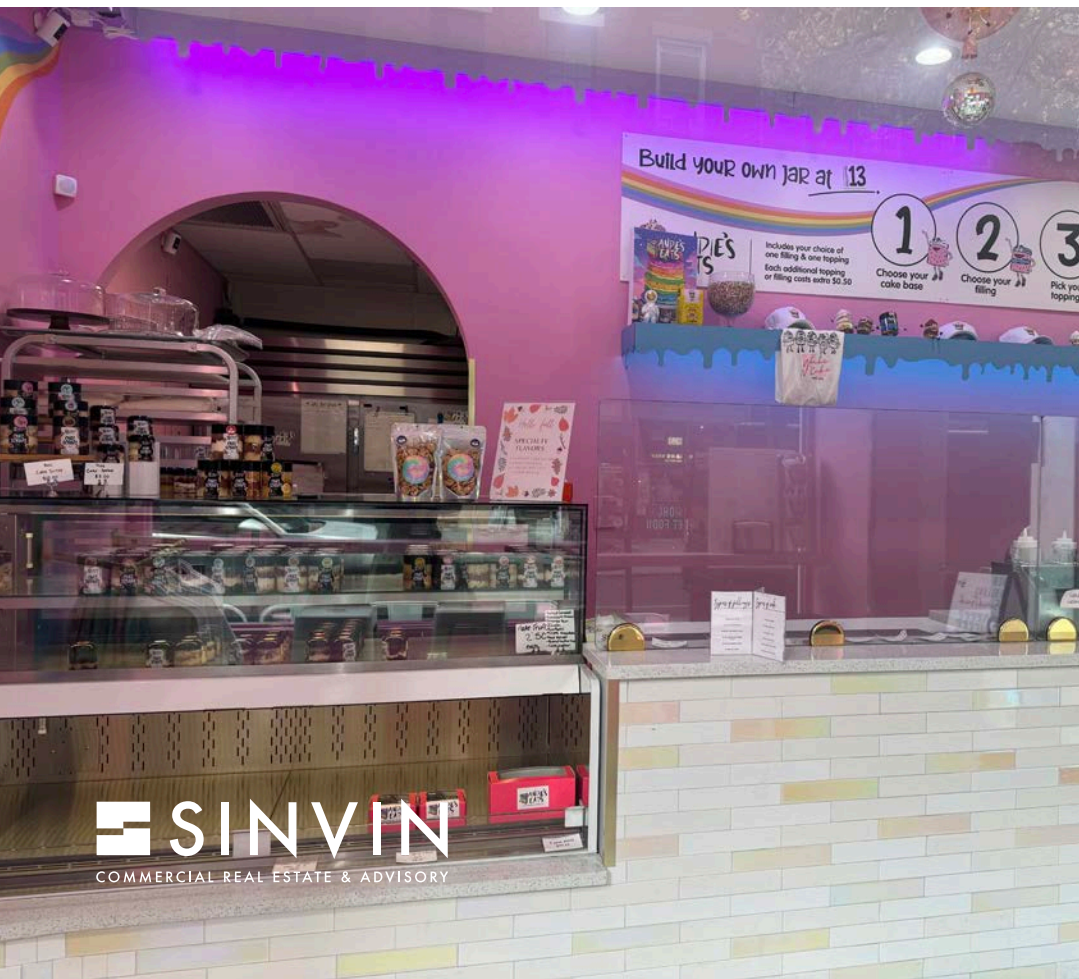
Term.....Negotiable

Possession.....Arranged

Asking Rent..Please Inquire



## CHARMING AND PRISTINE BAKERY SPACE WITH AMAZING FRONTAGE AND EXPOSURE



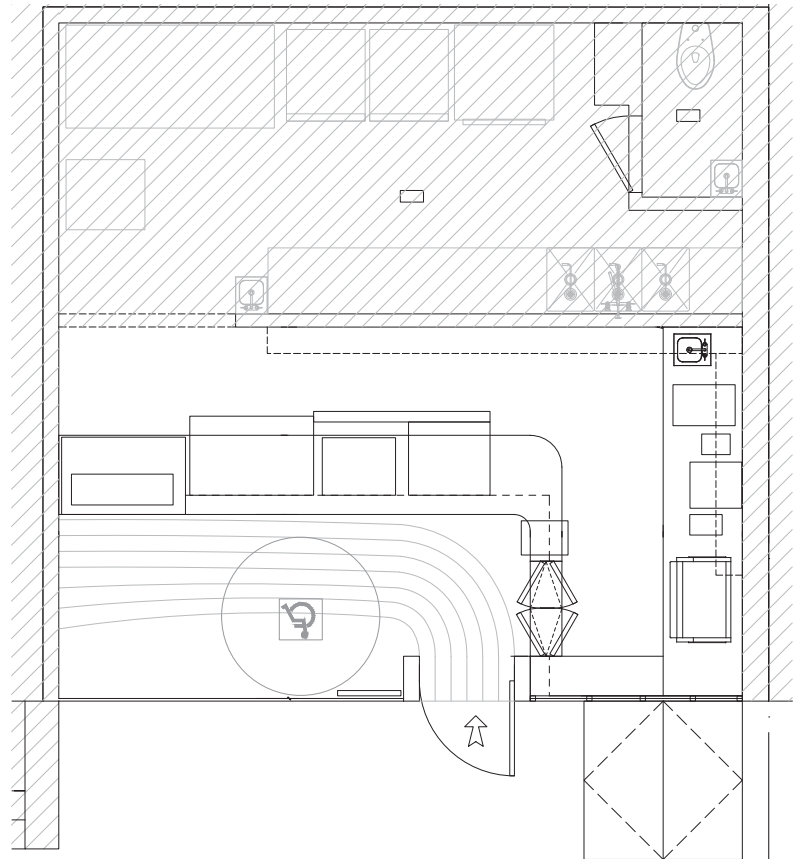
## NOTES:

- Bakery space in great condition with type 2 venting
- At the historic intersection of MacDougal and Bleecker Street
- Join the restaurant renaissance on the most famous street in the Village
- Sidewalk hatch to storage basement
- Walk up window for service directly to sidewalk traffic

## NEIGHBORS:

- Chloe
- Crumbl
- Mermaid Inn
- Cafe Figaro
- Gigi il Gelato
- Dame
- Honest Indian
- Hello Saigon
- Li-Lac Chocolates
- Porto Rico Importing Co.
- Miners Tavern
- Chow House
- Descendant of Thieves
- Percy's Pizza
- Old Tbilisi Garden
- Little Red Schoolhouse
- NYU Campus and Housing

## Ground Level



*A Cup of Joe with a Cake To Go!*



## PLEASE CONTACT:

**Christopher Owles**

212.604.9002

chris@sinvin.com

**Margie Sarway**

646.673.8742

margie@sinvin.com

**SINVIN**  
COMMERCIAL REAL ESTATE & ADVISORY