

14124 TEN MILE ROAD  
WARREN, MICHIGAN

INDUSTRIAL FOR LEASE  
10,800 Square Feet Available



**SIGNATURE  
ASSOCIATES**  
KNOW SIGNATURE | KNOW RESULTS

**IMMACULATELY MAINTAINED FACILITY**



## PROPERTY FEATURES

- 10,800 square feet available
- 1,800 square feet of office space
- 16' clear height
- (2) 12' x 14' grade level doors
- Cranes: 1-ton hoists
- 1000 amps, 240 volts, buss duct distribution
- Extremely clean
- Well-appointed offices
- Updated lighting with heavy power distribution throughout
- Lease Rate: \$9.50/sq. ft. Gross



For more information, please contact:

**BEN WILKIEMEYER**  
(248) 359 0624

[bwilkiemeyer@signatureassociates.com](mailto:bwilkiemeyer@signatureassociates.com)

**PAUL HOGE**  
(248) 948 0103

[paulhoge@signatureassociates.com](mailto:paulhoge@signatureassociates.com)

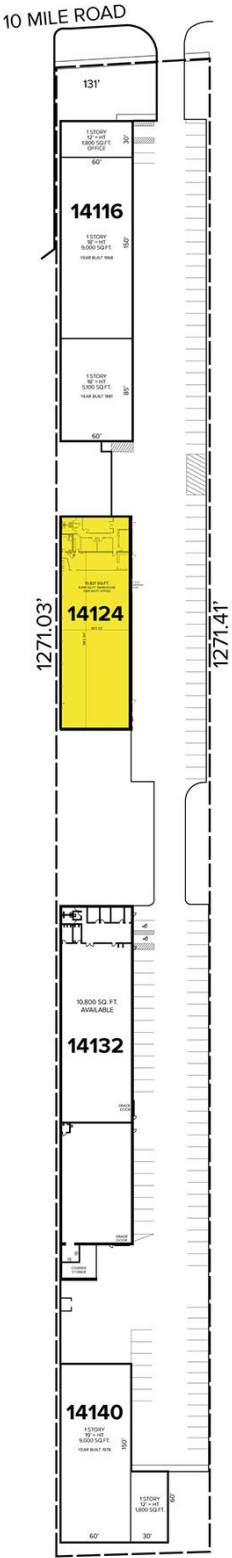
**SIGNATURE ASSOCIATES**  
One Towne Square, Suite 1200  
Southfield, MI 48076  
[www.signatureassociates.com](http://www.signatureassociates.com)

# 14124 Ten Mile Road – Warren, Michigan

## Industrial For Lease

10,800  
Square Feet  
AVAILABLE

### Site Plan



For more information, please contact:

**BEN WILKIEMEYER**  
(248) 359 0624

[bwilkiemeyer@signatureassociates.com](mailto:bwilkiemeyer@signatureassociates.com)

**PAUL HOGE**  
(248) 948 0103

[paulhoge@signatureassociates.com](mailto:paulhoge@signatureassociates.com)

**SIGNATURE ASSOCIATES**  
One Towne Square, Suite 1200  
Southfield, MI 48076  
[www.signatureassociates.com](http://www.signatureassociates.com)

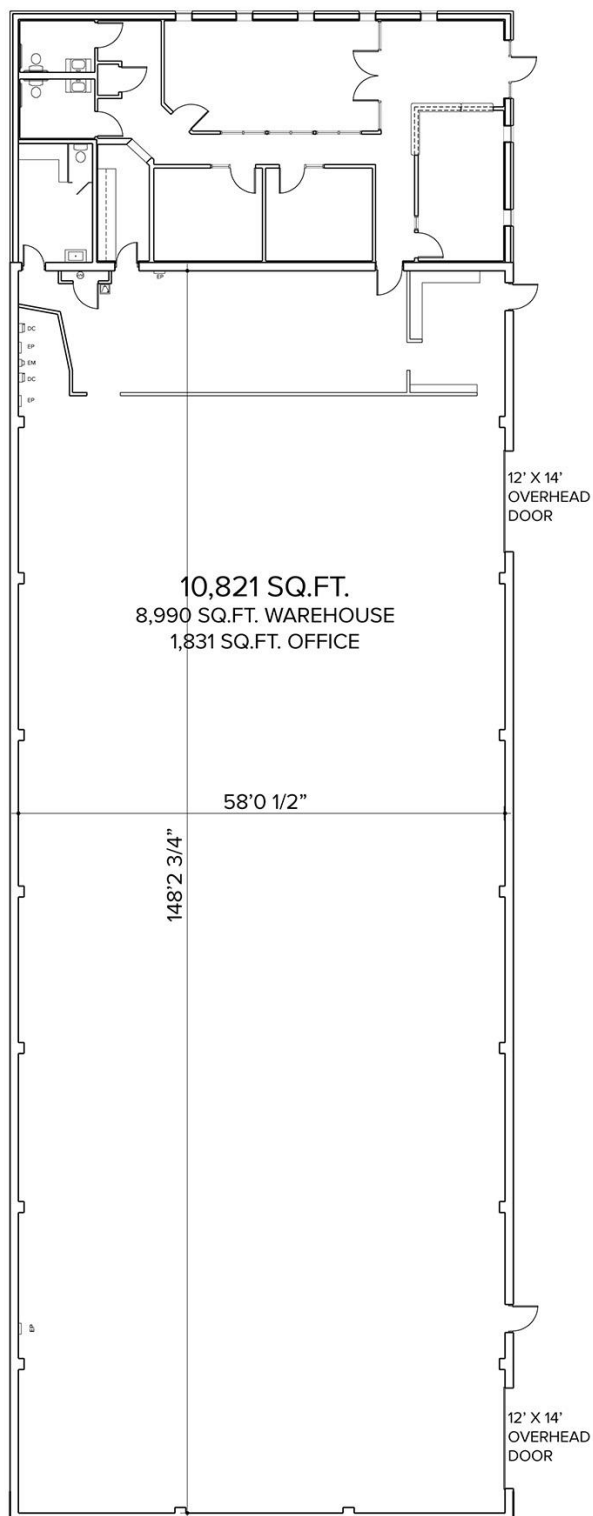
Information is subject to verification and no liability for errors or omissions is assumed. Price is subject to change and listing withdrawal.

# 14124 Ten Mile Road – Warren, Michigan

## Industrial For Lease

10,800  
Square Feet  
AVAILABLE

### Floor Plan



For more information, please contact:

**BEN WILKIEMEYER**  
(248) 359 0624

[bwilkiemeyer@signatureassociates.com](mailto:bwilkiemeyer@signatureassociates.com)

**PAUL HOGE**  
(248) 948 0103

[paulhoge@signatureassociates.com](mailto:paulhoge@signatureassociates.com)

**SIGNATURE ASSOCIATES**  
One Towne Square, Suite 1200  
Southfield, MI 48076  
[www.signatureassociates.com](http://www.signatureassociates.com)



# 14124 Ten Mile Road – Warren, Michigan

## Industrial For Lease

10,800  
Square Feet  
AVAILABLE

Aerial



For more information, please contact:

**BEN WILKEMEYER**

(248) 359 0624

[bwilkiemeyer@signatureassociates.com](mailto:bwilkiemeyer@signatureassociates.com)

**PAUL HOGE**

(248) 948 0103

[paulhoge@signatureassociates.com](mailto:paulhoge@signatureassociates.com)

**SIGNATURE ASSOCIATES**

One Towne Square, Suite 1200

Southfield, MI 48076

[www.signatureassociates.com](http://www.signatureassociates.com)