



PROPERTY OVERVIEW

- South West corner of Portland & Adelaide
- Brick & Beam office building
- 3rd floor walk up with freight elevator access
- 10' ceilings
- UNIT 301: 3,873 SF
- UNIT 303: 1,503 SF
- \$26 PSF NET
- \$19 TMI includes all utilities
- Units available are across the hall from each other

487 ADELAIDE STREET WEST

FOR LEASE

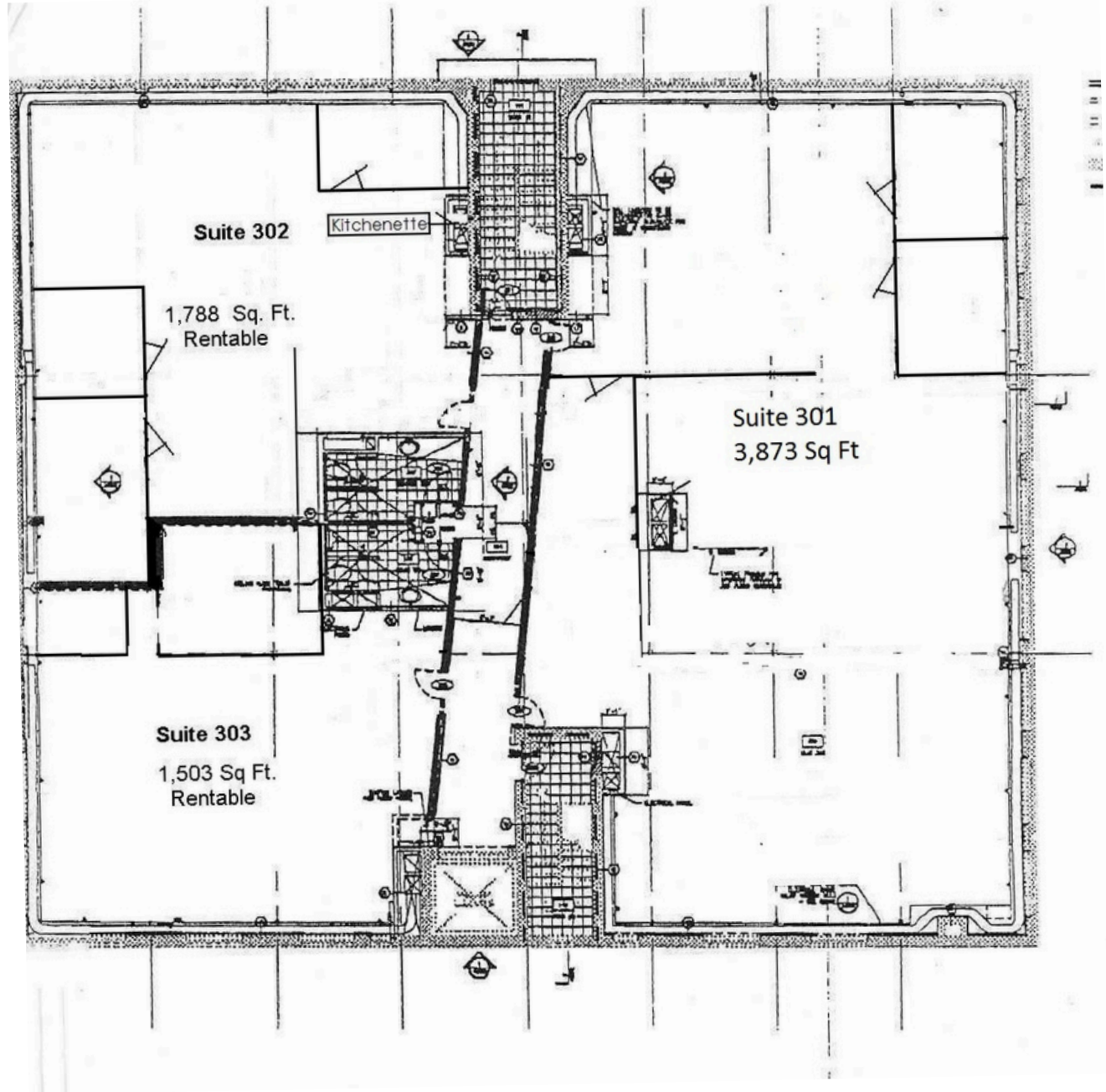


CHRIS WALASEK
Broker
647-407-8728
chris@gitalis.com



THE INFORMATION CONTAINED HEREIN HAS BEEN PROVIDED TO GITALIS REAL ESTATE INC. BROKERAGE FROM SOURCES DEEMED RELIABLE AND CORRECT, HOWEVER WE DO NOT WARRANT ITS ACCURACY OR ASSUME ANY RESPONSIBILITY OR LIABILITY OF ANY KIND WHATSOEVER WITH RESPECT TO THE ACCURACY OF THE INFORMATION CONTAINED HEREIN. ALL PERSONS ARE ADVISED TO INDEPENDENTLY VERIFY THE INFORMATION. THE INFORMATION HEREIN IS SUBJECT TO ERRORS, OMISSIONS, CHANGE OF PRICE, RENTAL OR OTHER CONDITIONS, PRIOR SALE OR WITHDRAWAL AT ANY TIME WITHOUT NOTICE.

FLOOR PLANS



CHRIS WALASEK
Broker
647-407-8728
chris@gitalis.com

