



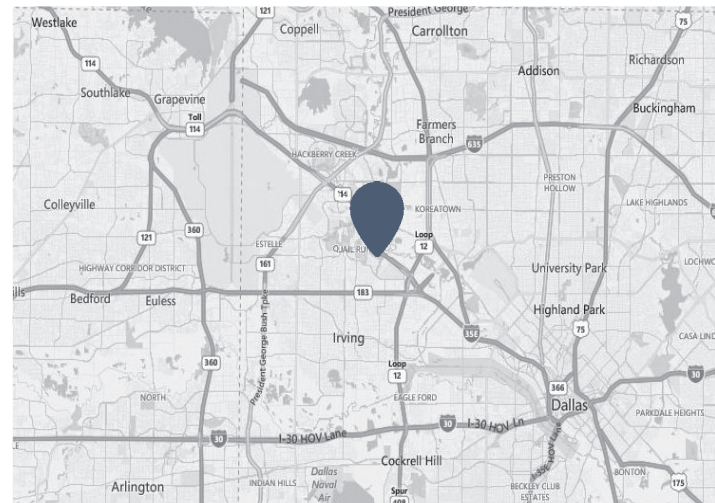
DECKER PLACE

420 Decker Drive, Irving, Texas 75062

- » 43,559sf, Two-Story Building
- » 3.31/1,000sf Parking Ratio
- » 420 Decker in centrally located in the Las Colinas business area and is in close proximity to many upscale restaurants, retail, and entertainment venues. The location provides easy access to several major highways, including SH 114, SH 183, I-635, I-30, and I-35



Andrew Crain | 972.942.8609
acrain@dogwoodcommercial.com

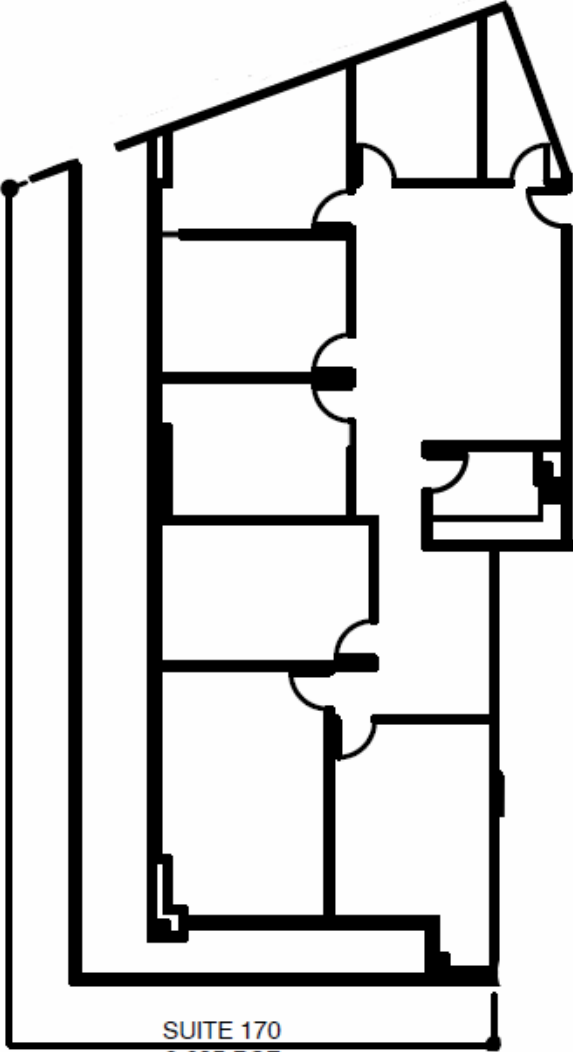


DECKER PLACE

420 Decker Drive, Irving, Texas 75062



DOGWOOD
COMMERCIAL



SUITE 170
2,635 RSF



Andrew Crain | 972.942.8609
acrain@dogwoodcommercial.com