

13480 BRIAR STREET

LEAWOOD, KS 66224

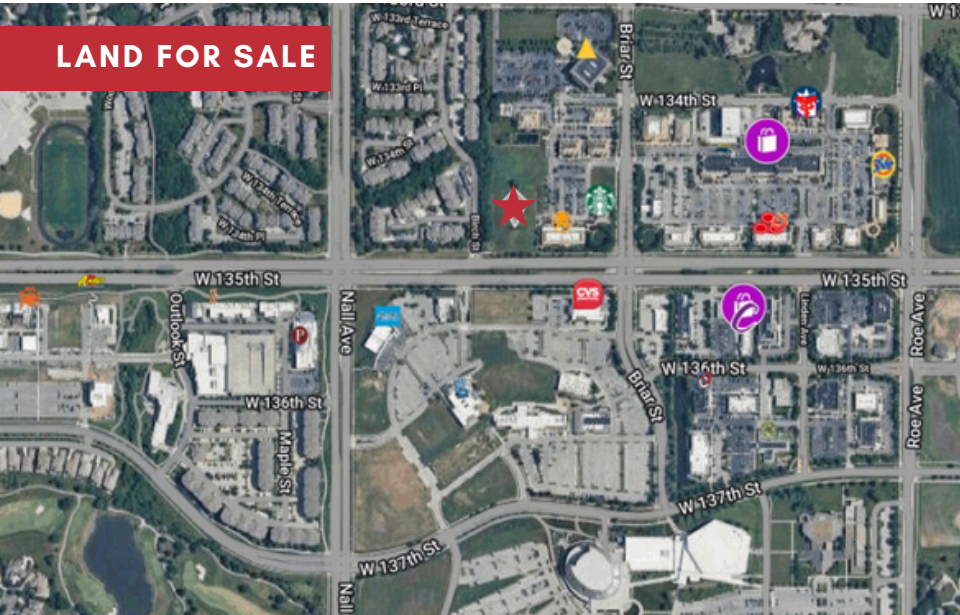


REECE

COMMERCIAL REAL ESTATE

a Berkshire Hathaway Affiliate

LAND FOR SALE



JIM THOME

☎ 913.548.8700

✉ JTHOME@REECECOMMERCIAL.COM



ALEX THOME

☎ 913.709.3849

✉ ATHOME@REECENICHOLS.COM

PROPERTY DETAILS

\$790,000

- 1.61 ACRES WITH 135TH STREET FRONTAGE
- MIXED USE ZONING
- PARKWAY PLAZA
- OVER 28,000 CARS PER DAY ON 135TH & BIRCH ST.
- 22,000 CARS PER DAY ON NALL AVE. & 134TH

The information above has been obtained from sources believed reliable. While we do not doubt its accuracy we have not verified it and make no guarantee, warranty or representation about it. It is your responsibility to independently confirm its accuracy and completeness. Any projections, opinions, assumptions, or estimates used are for example only and do not represent the current or future performance of the property. You and your advisors should conduct a careful, independent investigation of the property to determine to your satisfaction the suitability of the property for your needs. © 2020

13480 BRIAR STREET

LEAWOOD, KS 66224

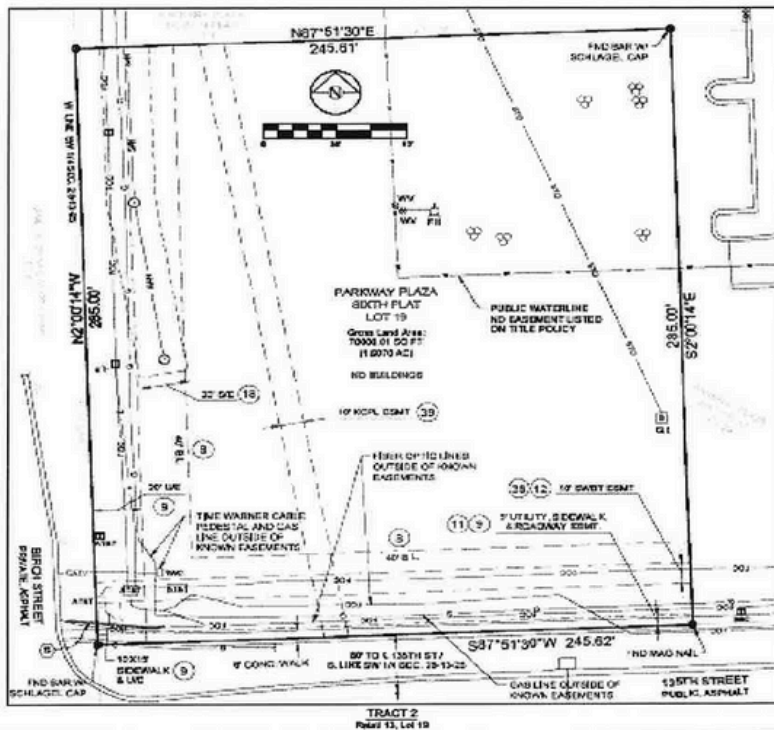


REECE

COMMERCIAL REAL ESTATE

a Berkshire Hathaway Affiliate

EXHIBIT A Property



JIM THOME



913.548.8700



JTHOME@REECECOMMERCIAL.COM



ALEX THOME



913.709.3849



ATHOME@REECENICHOLS.COM



The information above has been obtained from sources believed reliable. While we do not doubt its accuracy we have not verified it and make no guarantee, warranty or representation about it. It is your responsibility to independently confirm its accuracy and completeness. Any projections, opinions, assumptions, or estimates used are for example only and do not represent the current or future performance of the property. You and your advisors should conduct a careful, independent investigation of the property to determine to your satisfaction the suitability of the property for your needs. © 2020

13480 BRIAR STREET

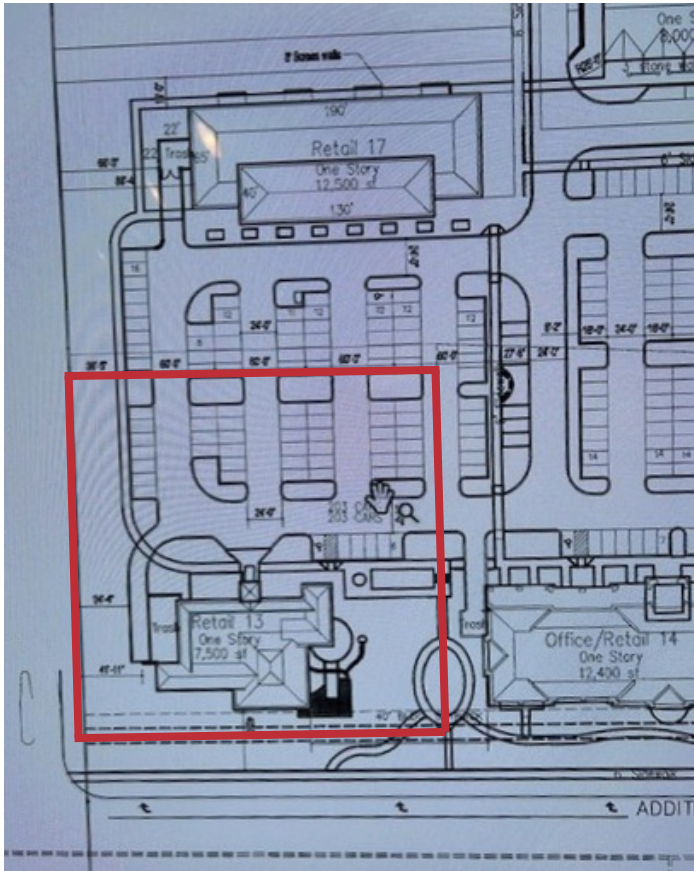
LEAWOOD, KS 66224



REECE

COMMERCIAL REAL ESTATE

a Berkshire Hathaway Affiliate



JIM THOME

☎ 913.548.8700

✉ JTHOME@REECECOMMERCIAL.COM



ALEX THOME

☎ 913.709.3849

✉ ATHOME@REECENICHOLS.COM

The information above has been obtained from sources believed reliable. While we do not doubt its accuracy we have not verified it and make no guarantee, warranty or representation about it. It is your responsibility to independently confirm its accuracy and completeness. Any projections, opinions, assumptions, or estimates used are for example only and do not represent the current or future performance of the property. You and your advisors should conduct a careful, independent investigation of the property to determine to your satisfaction the suitability of the property for your needs. © 2020

13480 BRIAR STREET

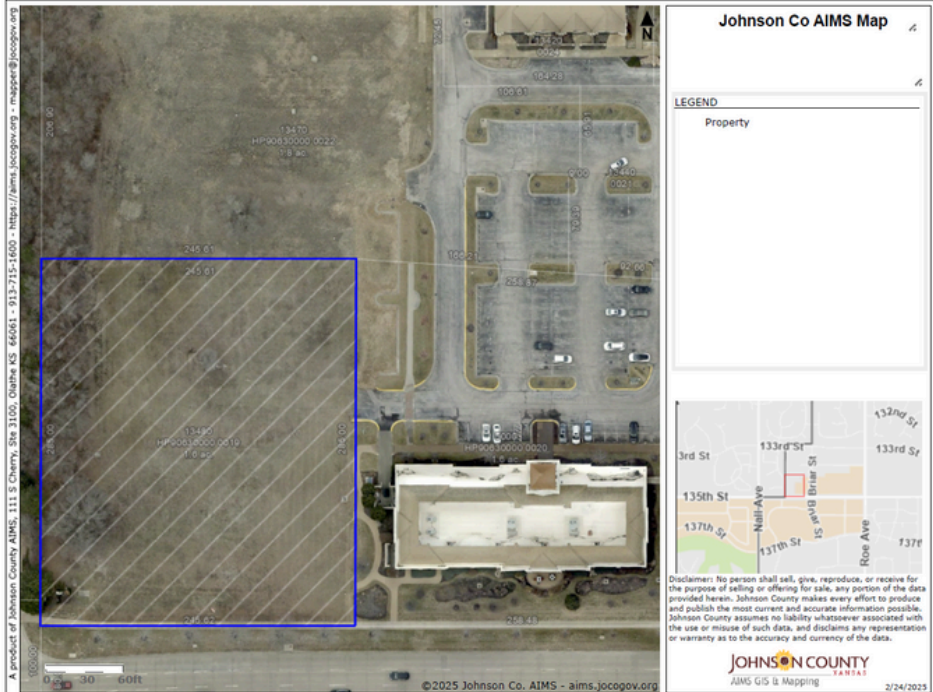
LEAWOOD, KS 66224



REECE

COMMERCIAL REAL ESTATE

a Berkshire Hathaway Affiliate



JIM THOME

913.548.8700

JTHOME@REECECOMMERCIAL.COM



ALEX THOME

913.709.3849

ATHOME@REECENICHOLS.COM

The information above has been obtained from sources believed reliable. While we do not doubt its accuracy we have not verified it and make no guarantee, warranty or representation about it. It is your responsibility to independently confirm its accuracy and completeness. Any projections, opinions, assumptions, or estimates used are for example only and do not represent the current or future performance of the property. You and your advisors should conduct a careful, independent investigation of the property to determine to your satisfaction the suitability of the property for your needs. © 2020