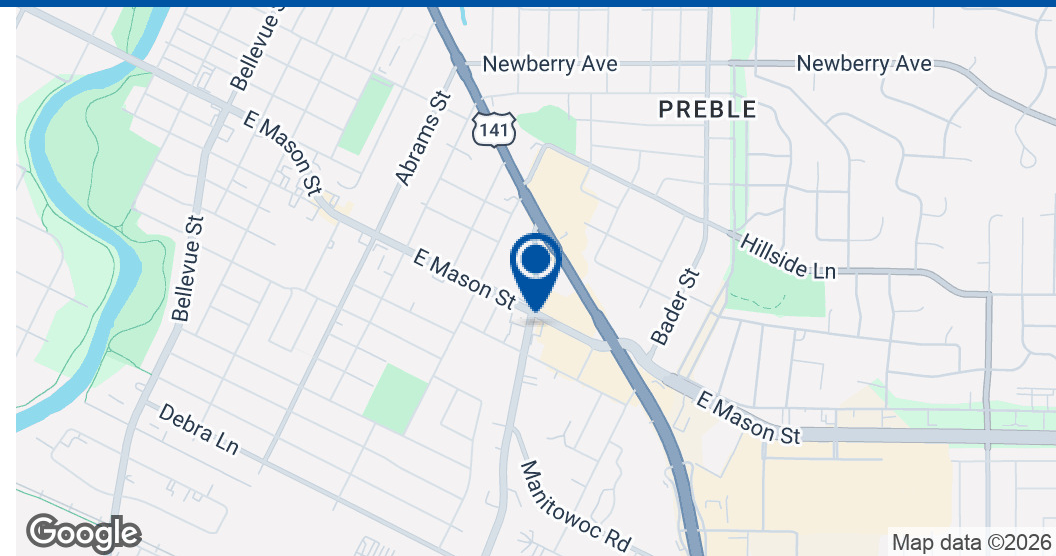


# 1930 E MASON ST GREEN BAY

1930 E Mason St, Green Bay, WI 54302



## Offering Summary

Lease Rate:	\$1,200 SF/yr (NNN)
Building Size:	4,872 SF
Available SF:	2,400 SF
Lot Size:	25,144 SF
Number of Units:	2
Year Built:	1982
Renovated:	2025
Zoning:	C1
Market:	Green Bay

## Property Overview

Retail space for lease located next to Papa Johns as the anchor. High Visibility and high traffic location with easy access in and out of the location off both E Mason St and Lime Kiln Rd. Space is approx 2,400 sq ft. with inside garage space as well. Ample Parking at the site with signage available for your business. Landlord is looking for \$1,200.00 per month lease. Only restriction would be not another pizza operation. Take advantage of this great location today!

## Property Highlights

- 2,400 sq ft retail space
- \$1,200 per month (36 month lease preferred/negotiable)
- Inside Garage space behind the unit.
- Entry off E Mason and also Lime Kiln Rd.
- Tenant shall have thr right to install & erect signage per local ordinance.

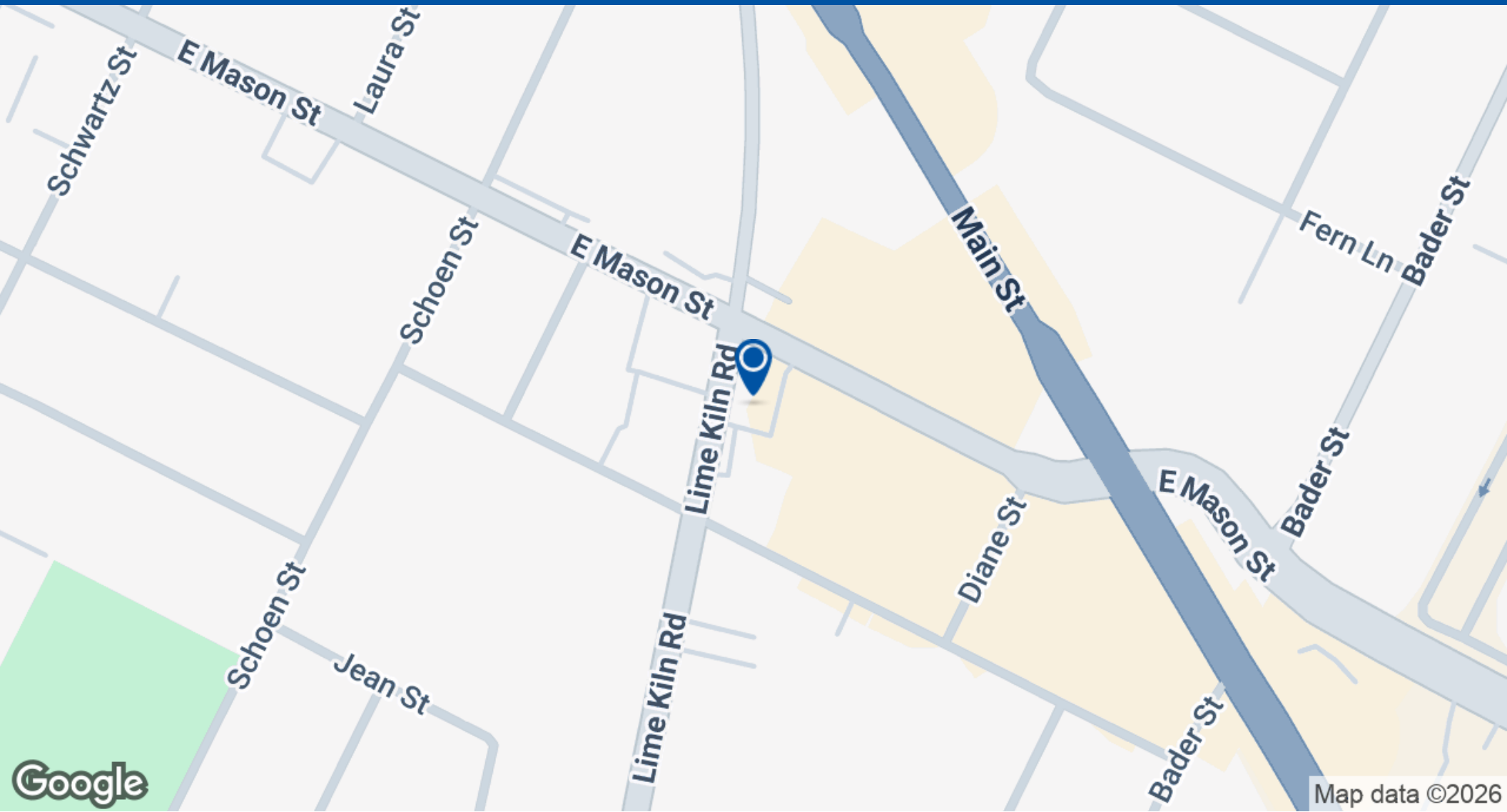
## George Krause

Broker  
920.905.0550  
gkrause@choicecre.com

100 MARITIME DR, MANITOWOC, WI 54220 • CHOICECRE.COM

# 1930 E MASON ST GREEN BAY

1930 E Mason St, Green Bay, WI 54302



**George Krause**

Broker

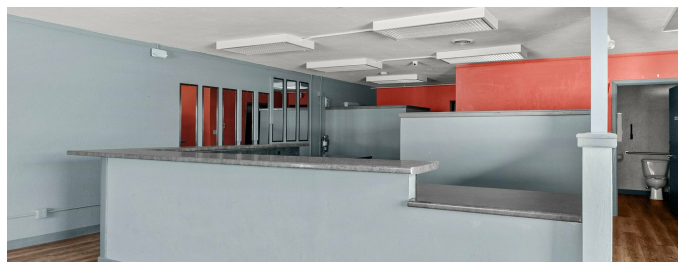
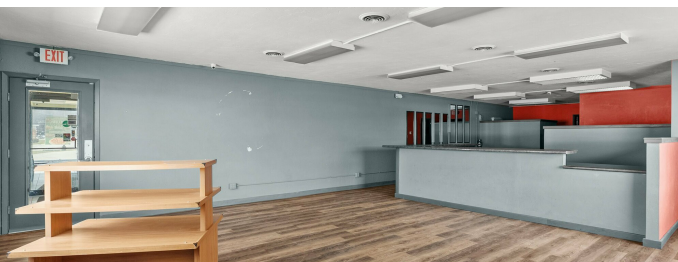
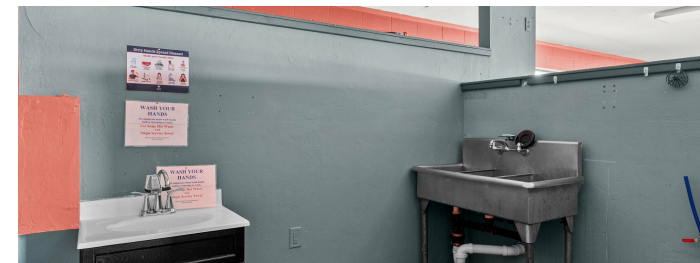
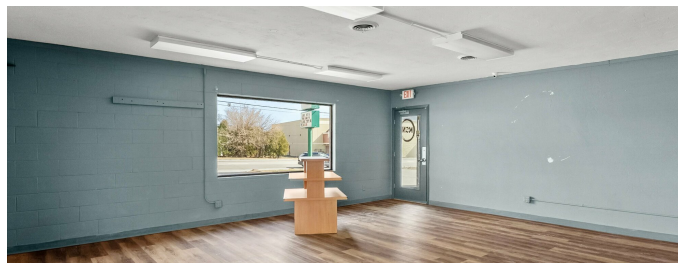
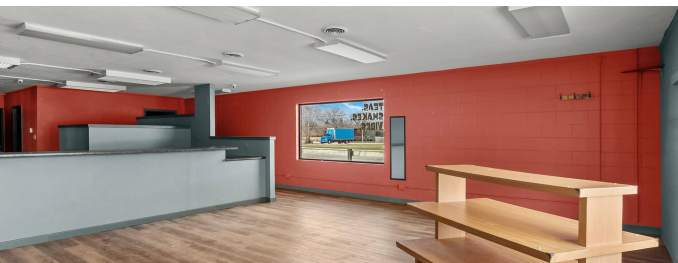
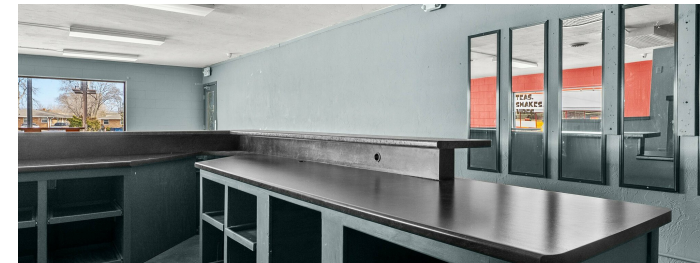
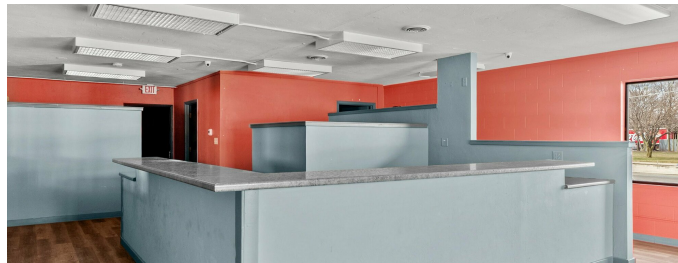
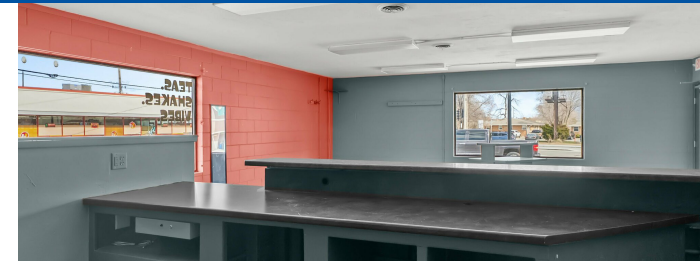
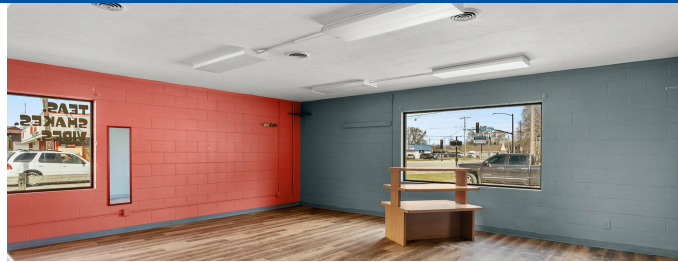
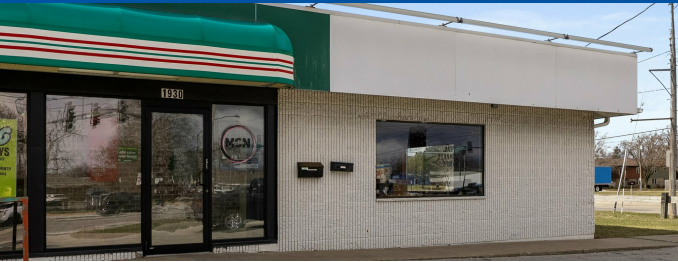
920.905.0550

gkrause@choicecre.com

100 MARITIME DR, MANITOWOC, WI 54220 • CHOICECRE.COM

# 1930 E MASON ST GREEN BAY

1930 E Mason St, Green Bay, WI 54302



**George Krause**

Broker

920.905.0550

[gkrause@choicecre.com](mailto:gkrause@choicecre.com)

100 MARITIME DR, MANITOWOC, WI 54220 • CHOICECRE.COM

# 1930 E MASON ST GREEN BAY

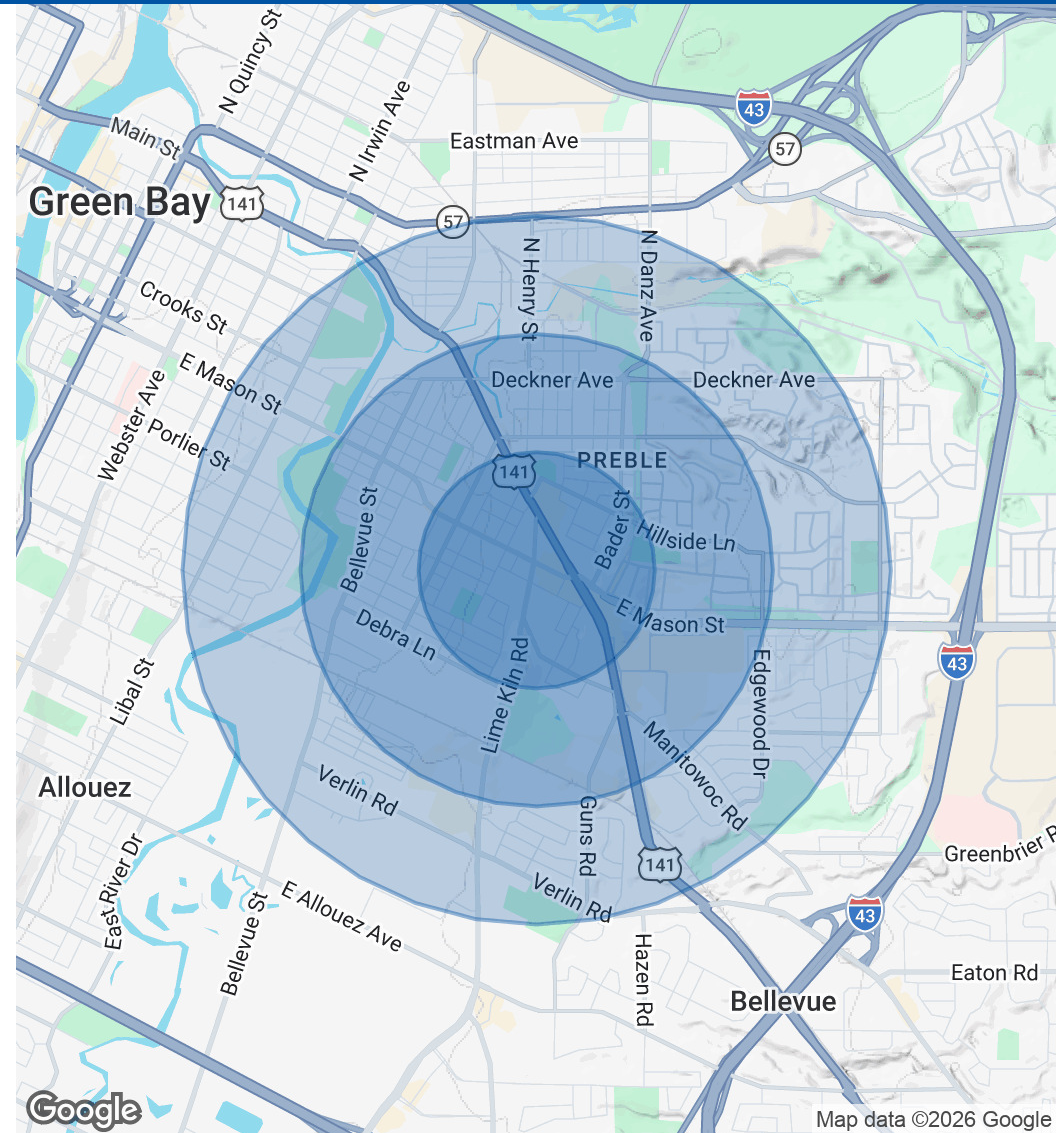
1930 E Mason St, Green Bay, WI 54302



Population	0.5 Miles	1 Mile	1.5 Miles
Total Population	3,584	12,549	25,041
Average Age	27.6	32.1	34.7
Average Age (Male)	24.7	29.8	34.2
Average Age (Female)	34.1	37.4	36.9

Households & Income	0.5 Miles	1 Mile	1.5 Miles
Total Households	1,362	5,018	10,362
# of Persons per HH	2.6	2.5	2.4
Average HH Income	\$62,930	\$68,188	\$72,207
Average House Value	\$173,159	\$180,299	\$182,765

2023 American Community Survey (ACS)



**George Krause**

Broker

920.905.0550

gkrause@choicecre.com

100 MARITIME DR, MANITOWOC, WI 54220 • CHOICECRE.COM

# 1930 E MASON ST GREEN BAY

1930 E Mason St, Green Bay, WI 54302



## CONFIDENTIALITY AND DISCLAIMER

The information contained in this document is proprietary and strictly Confidential. It is intended to be reviewed only by the party receiving it from Choice Commercial Real Estate and should not be made available to any other person or entity without the written consent of Choice Commercial Real Estate.

This document has been prepared to provide a summary, unverified information to the prospective purchasers, and to establish only a preliminary level of interest in the subject property. The information contained herein is not a substitute for a thorough due diligence investigation. Choice Commercial Real Estate has not made any investigation and makes no warranty or representation.

The information contained in this document has been obtained from sources we believe to be reliable; however, Choice Commercial Real Estate has not verified, and will not verify, any of the information contained herein, nor has Choice Commercial Real Estate conducted any investigation regarding these matters and makes no warranty or representation whatsoever regarding the accuracy or completeness of the information provided. All potential buyers must take the appropriate measures to verify all of the information contained herein.

### **George Krause**

Broker

920.905.0550

gkrause@choicecre.com

100 MARITIME DR, MANITOWOC, WI 54220 • CHOICECRE.COM

**DISCLOSURE TO NON-RESIDENTIAL CUSTOMERS**

1 Prior to negotiating on your behalf the brokerage firm, or an agent associated with the firm, must provide you the  
2 following disclosure statement:

3 **DISCLOSURE TO CUSTOMERS** You are a customer of the brokerage firm (hereinafter Firm). The Firm is either an agent  
4 of another party in the transaction or a subagent of another firm that is the agent of another party in the transaction. A  
5 broker or a salesperson acting on behalf of the Firm may provide brokerage services to you. Whenever the Firm is  
6 providing brokerage services to you, the Firm and its brokers and salespersons (hereinafter Agents) owe you, the  
7 customer, the following duties:

- 8 (a) The duty to provide brokerage services to you fairly and honestly.
- 9 (b) The duty to exercise reasonable skill and care in providing brokerage services to you.
- 10 (c) The duty to provide you with accurate information about market conditions within a reasonable time if you request  
11 it, unless disclosure of the information is prohibited by law.
- 12 (d) The duty to disclose to you in writing certain Material Adverse Facts about a property, unless disclosure of the  
13 information is prohibited by law (see lines 42-51).
- 14 (e) The duty to protect your confidentiality. Unless the law requires it, the Firm and its Agents will not disclose your  
15 confidential information or the confidential information of other parties (see lines 23-41).
- 16 (f) The duty to safeguard trust funds and other property held by the Firm or its Agents.
- 17 (g) The duty, when negotiating, to present contract proposals in an objective and unbiased manner and disclose the  
18 advantages and disadvantages of the proposals.

19 Please review this information carefully. An Agent of the Firm can answer your questions about brokerage services,  
20 but if you need legal advice, tax advice, or a professional home inspection, contact an attorney, tax advisor, or home  
21 inspector. This disclosure is required by section 452.135 of the Wisconsin statutes and is for information only. It is a  
22 plain-language summary of the duties owed to a customer under section 452.133(1) of the Wisconsin statutes.

23 **CONFIDENTIALITY NOTICE TO CUSTOMERS** The Firm and its Agents will keep confidential any information given to the  
24 Firm or its Agents in confidence, or any information obtained by the Firm and its Agents that a reasonable person  
25 would want to be kept confidential, unless the information must be disclosed by law or you authorize the Firm to  
26 disclose particular information. The Firm and its Agents shall continue to keep the information confidential after the  
27 Firm is no longer providing brokerage services to you.

- 28 The following information is required to be disclosed by law:
- 29 1. Material Adverse Facts, as defined in Wis. Stat. § 452.01(5g) (see lines 42-51).
  - 30 2. Any facts known by the Firm or its Agents that contradict any information included in a written inspection  
31 report on the property or real estate that is the subject of the transaction.

32 To ensure that the Firm and its Agents are aware of what specific information you consider confidential, you may  
33 list that information below (see lines 35-41) or provide that information to the Firm or its Agents by other means. At a  
34 later time, you may also provide the Firm or its Agents with other Information you consider to be confidential.

35 **CONFIDENTIAL INFORMATION:** \_\_\_\_\_  
36 \_\_\_\_\_  
37 \_\_\_\_\_

38 **NON-CONFIDENTIAL INFORMATION** (the following information may be disclosed by the Firm and its Agents): \_\_\_\_\_  
39 \_\_\_\_\_  
40 \_\_\_\_\_  
41 \_\_\_\_\_ (Insert information you authorize to be disclosed, such as financial qualification information.)

42 **DEFINITION OF MATERIAL ADVERSE FACTS**  
43 A "Material Adverse Fact" is defined in Wis. Stat. § 452.01(5g) as an Adverse Fact that a party indicates is of such  
44 significance, or that is generally recognized by a competent licensee as being of such significance to a reasonable  
45 party, that it affects or would affect the party's decision to enter into a contract or agreement concerning a transaction  
46 or affects or would affect the party's decision about the terms of such a contract or agreement.

47 An "Adverse Fact" is defined in Wis. Stat. § 452.01(1e) as a condition or occurrence that a competent licensee  
48 generally recognizes will significantly and adversely affect the value of the property, significantly reduce the structural  
49 integrity of improvements to real estate, or present a significant health risk to occupants of the property; or information  
50 that indicates that a party to a transaction is not able to or does not intend to meet his or her obligations under a  
51 contract or agreement made concerning the transaction.

52 **NOTICE ABOUT SEX OFFENDER REGISTRY** You may obtain information about the sex offender registry and persons  
53 registered with the registry by contacting the Wisconsin Department of Corrections on the Internet at  
54 <http://www.doc.wi.gov> or by telephone at 608-240-5830.

No representation is made as to the legal validity of any provision or the adequacy of any provision in any specific transaction.  
Copyright © 2016 by Wisconsin REALTORS® Association Drafted by Attorney Debra Peterson Conrad