



**275 Sacramento St**  
San Francisco, CA

# 4th, 5th & 6th Floor Available

Subtenants will have access to 5,000 SF roof terrace

**SUBLEASE SPACES**

**12,000–36,675  
RSF Available**

## **New Spec Suites Available!**

**Janna Luce**

415.309.0067  
jluce@cresa.com  
BRE# 01255526

**Jacob Berston**

415.599.6476  
jberston@cresa.com  
BRE# 02218477



# SHARED ROOF TERRACE





## FEATURES

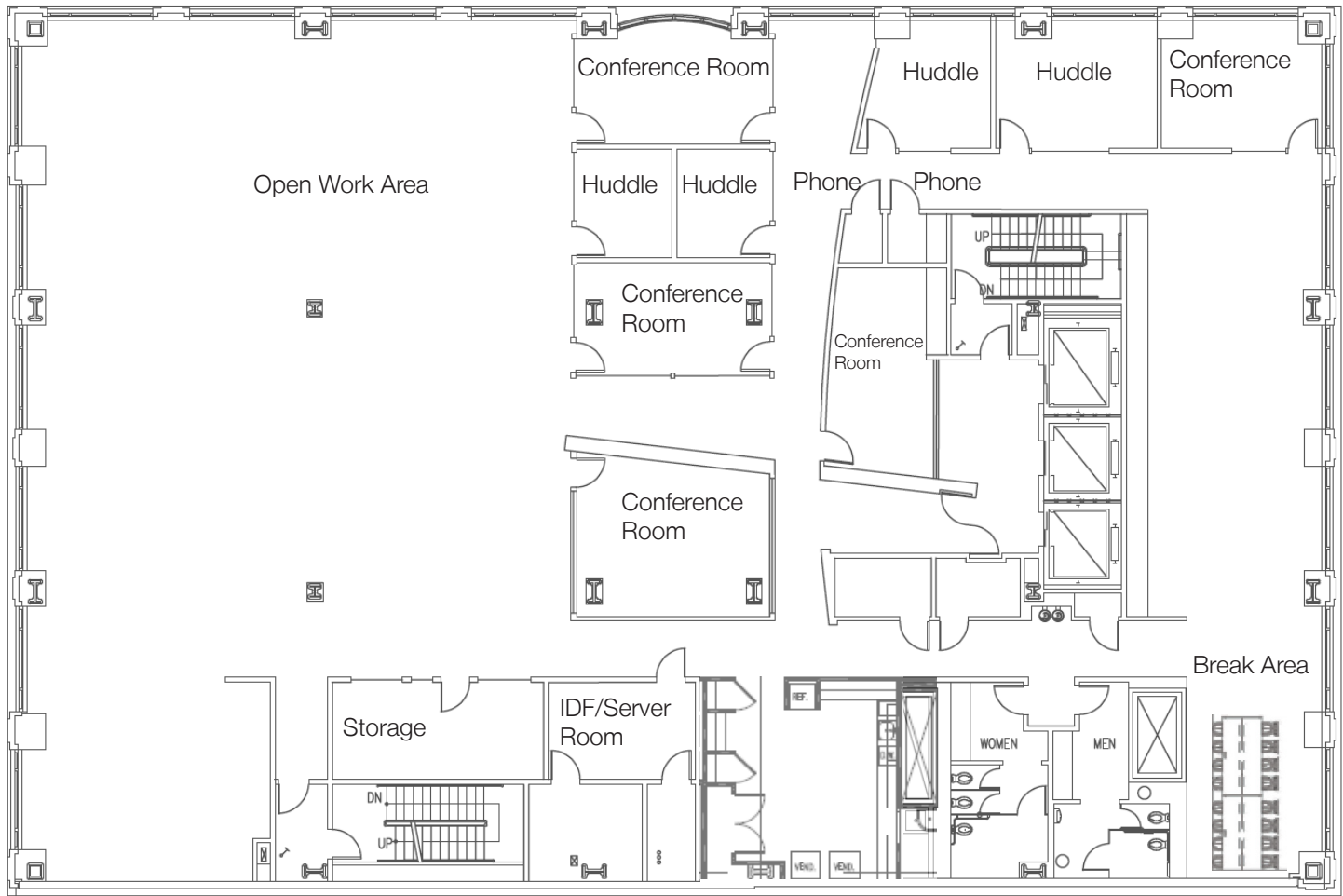
- 3 floors available - may be leased together or separately
- 4" raised floor throughout with CAT6 cabling and electrical distribution
- Dedicated car parking and bike parking available
- Access to 5,000 SF Roof Terrace

## SPACE PROFILE

Floor	Availability	RSF	Term
4th Floor	Available Now	12,600 RSF	Flexible term 1-3 years
5th Floor	Available Now	12,000 RSF	Flexible term 1-3 years
6th Floor	Available Now	12,075 RSF	Flexible term 1-3 years







# FLOOR NOTES - 4TH FLOOR | 12,600 RSF

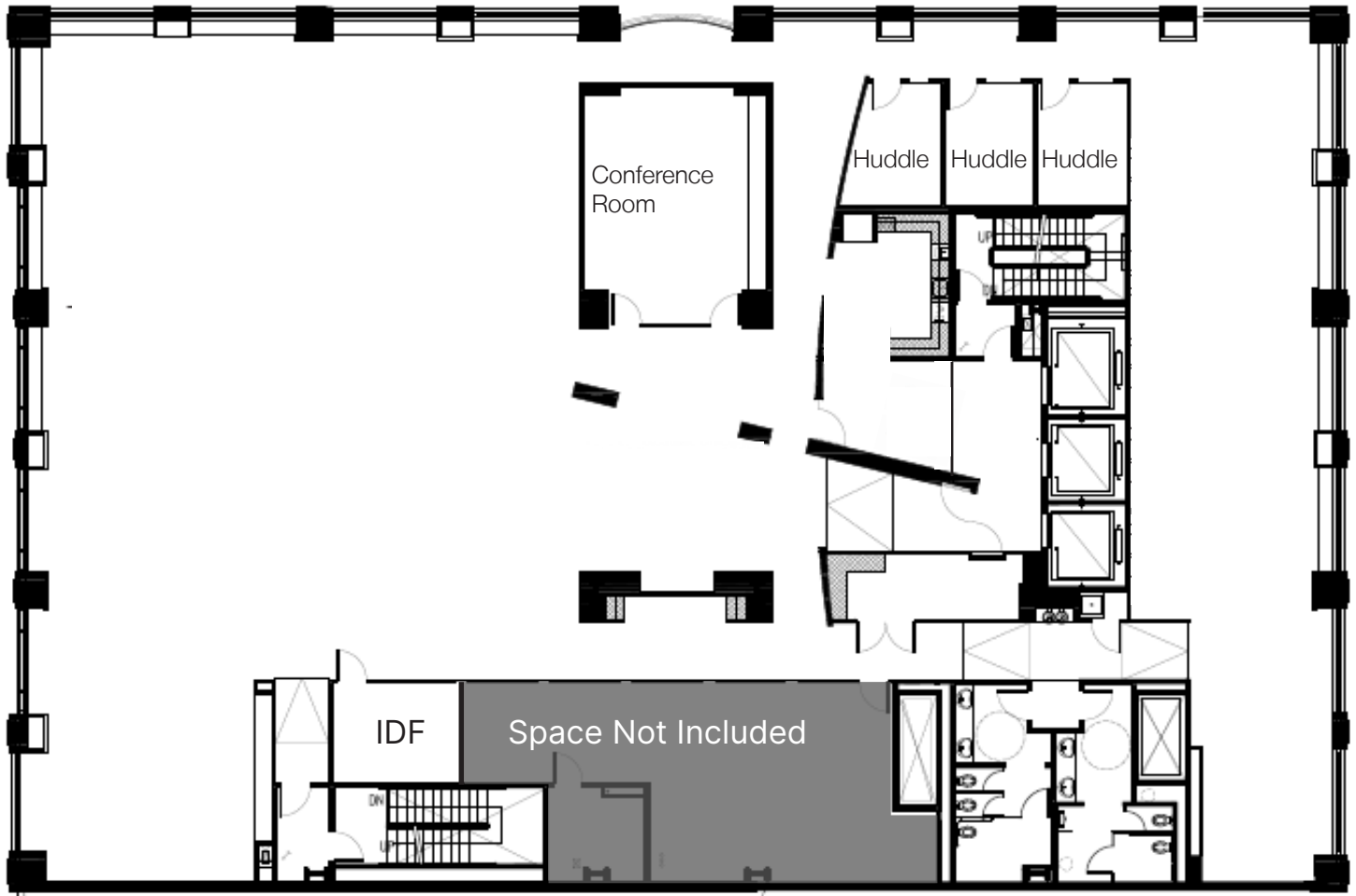
- 5 conference rooms
- 4 huddle rooms
- Planned for 73 desks
- Casual meeting areas
- Kitchen & break area

**Janna Luce**  
 415.309.0067  
 jluce@cresa.com  
 BRE# 01255526

**Jacob Berston**  
 415.599.6476  
 jberston@cresa.com  
 BRE# 02218477

Cresa © 2024. All rights reserved. The information contained in this document has been obtained from sources believed reliable. While Cresa does not doubt its accuracy, Cresa has not verified it and makes no guarantee, warranty, or representation about it. It is your responsibility to independently confirm its accuracy and completeness. Any projections, opinions, assumptions or estimates used are for example only and do not represent the current or future performance of the property. The value of this transaction to you depends on tax and other factors which should be evaluated by your tax, financial and legal advisors. You and your advisors should conduct a careful, independent investigation of the property to determine to your satisfaction the suitability of the property for your needs.





Hypothetical Furniture Plan

## FLOOR NOTES - 5TH FLOOR | 12,000 RSF

- Large skylight and great natural light throughout
- 52 desks available, room for more
- 1 boardroom
- 3 huddle rooms/private offices
- Kitchen with seating
- Flexible open plan

**Janna Luce**

415.309.0067  
 jluce@cresa.com  
 BRE# 01255526

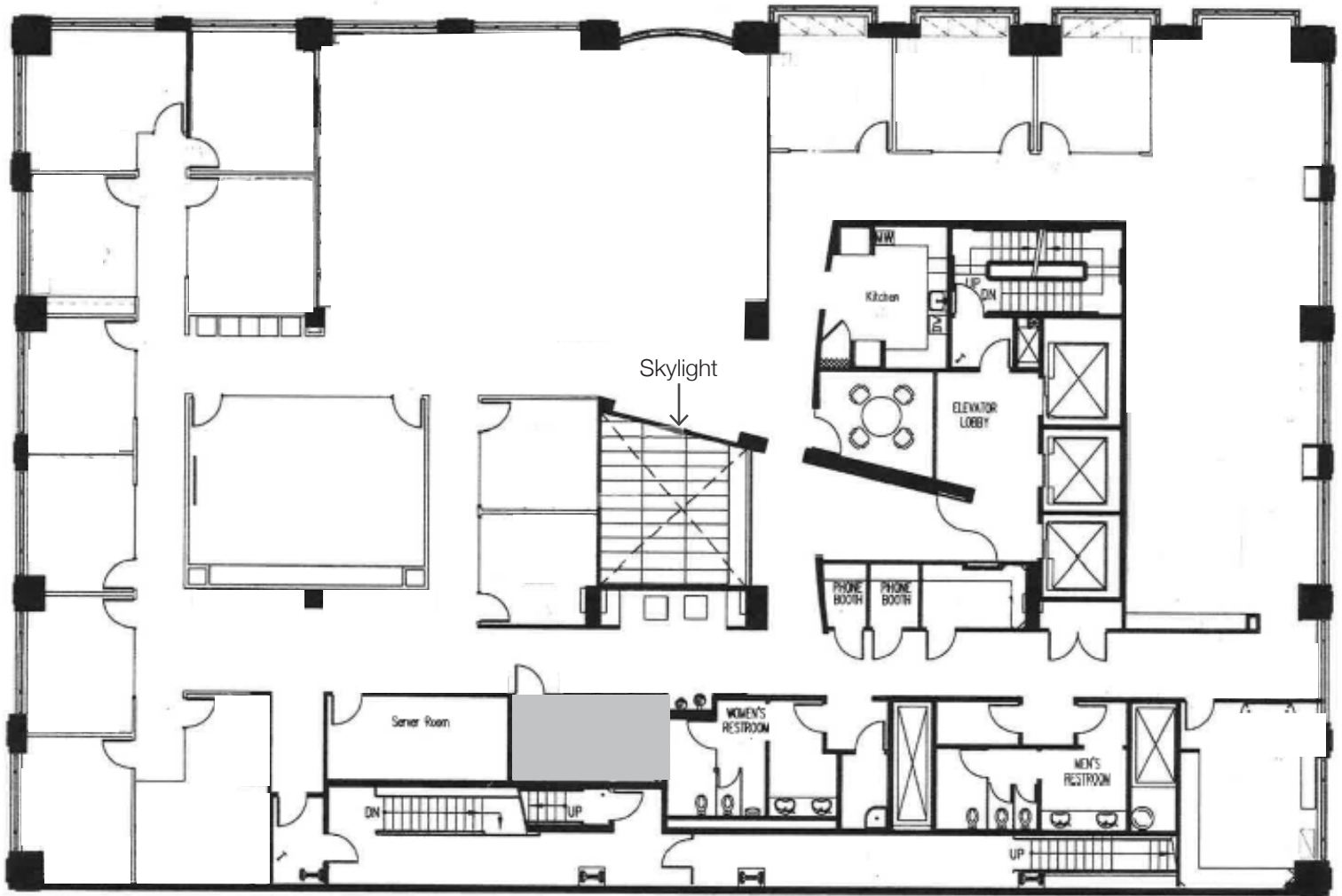
**Jacob Berston**

415.599.6476  
 jberston@cresa.com  
 BRE# 02218477

Cresa © 2024. All rights reserved. The information contained in this document has been obtained from sources believed reliable. While Cresa does not doubt its accuracy, Cresa has not verified it and makes no guarantee, warranty, or representation about it. It is your responsibility to independently confirm its accuracy and completeness. Any projections, opinions, assumptions or estimates used are for example only and do not represent the current or future performance of the property. The value of this transaction to you depends on tax and other factors which should be evaluated by your tax, financial and legal advisors. You and your advisors should conduct a careful, independent investigation of the property to determine to your satisfaction the suitability of the property for your needs.







## FLOOR NOTES - 6TH FLOOR | 12,075 RSF

- 14 private offices
- Boardroom
- 2 conference rooms
- 2 phone booths
- Large skylight and great natural light throughout
- Views of Ferry Building and Coit Tower

**Janna Luce**

415.309.0067  
 jluce@cresa.com  
 BRE# 01255526

**Jacob Berston**

415.599.6476  
 jberston@cresa.com  
 BRE# 02218477

Cresa © 2024. All rights reserved. The information contained in this document has been obtained from sources believed reliable. While Cresa does not doubt its accuracy, Cresa has not verified it and makes no guarantee, warranty, or representation about it. It is your responsibility to independently confirm its accuracy and completeness. Any projections, opinions, assumptions or estimates used are for example only and do not represent the current or future performance of the property. The value of this transaction to you depends on tax and other factors which should be evaluated by your tax, financial and legal advisors. You and your advisors should conduct a careful, independent investigation of the property to determine to your satisfaction the suitability of the property for your needs.