

DOWNTOWN SAN MATEO CLASS A OFFICE

# 100 S ELLSWORTH AVENUE



**NEWMARK**

**DAN MATTEUCCI**

650-358-5276

[dan.matteucci@nmrk.com](mailto:dan.matteucci@nmrk.com)

CA RE License #01848064

# PROPERTY HIGHLIGHTS



## AVAILABLE SPACE

- **4TH FLOOR**  
SIZE: ±8,371 Square Feet  
PARKING SPOTS: 20 unassigned
- **9TH FLOOR**  
SIZE: ±8,371 Square Feet  
PARKING SPOTS: 23 unassigned



## OPEN FLOOR PLAN WITH CREATIVE TECH IMPROVEMENTS



## FURNITURE AVAILABLE

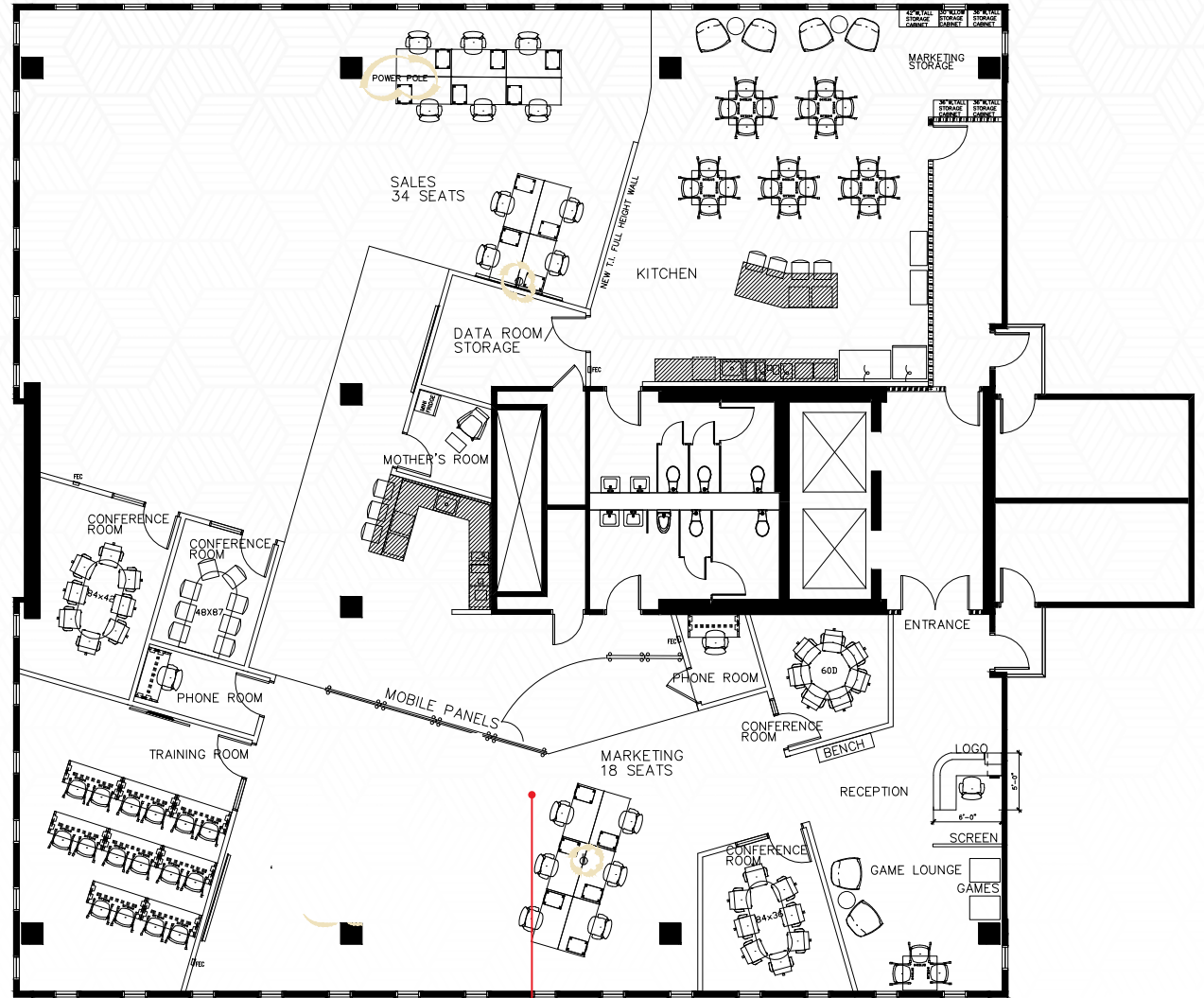


## TWO BLOCKS TO DOWNTOWN SAN MATEO CALTRAIN STATION

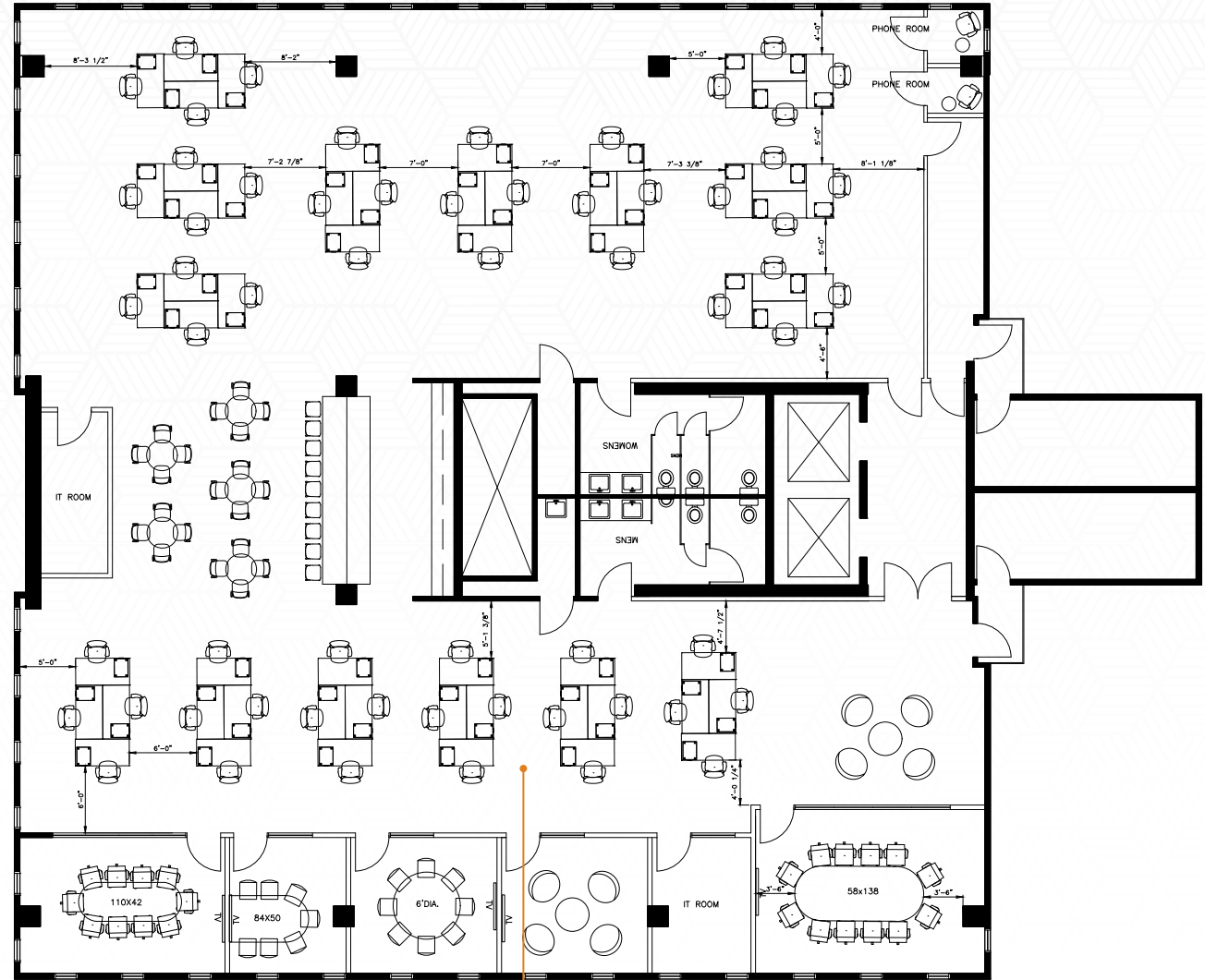


## GARAGE PARKING On-Site





**FOURTH FLOOR**  
 ±8,371 Square Feet  
*hypothetical furniture plan*

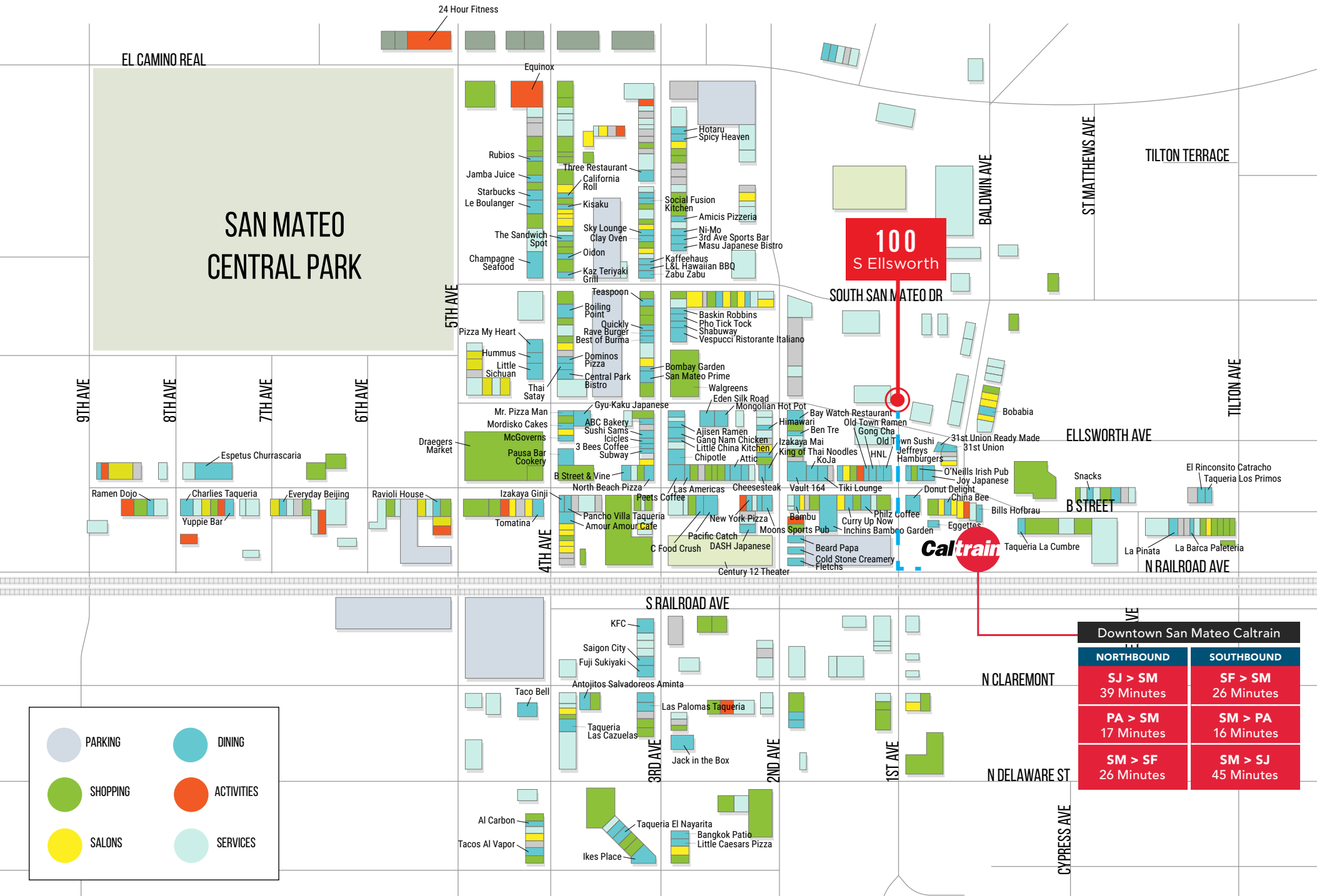


## NINTH FLOOR

±8,371 Square Feet

*hypothetical furniture plan*

# DOWNTOWN SAN MATEO AMENITIES



## CONTACT:

**DAN MATTEUCCI**

650.358.5276

dan.matteucci@nmrk.com

CA RE License #01848064

---

The distributor of this communication is performing acts for which a real estate license is required. The information contained herein has been obtained from sources deemed reliable but has not been verified and no guarantee, warranty or representation, either express or implied, is made with respect to such information. Terms of sale or lease and availability are subject to change or withdrawal without notice.

2950 South Delaware Street, Suite 125, San Mateo | 19-0153.06/19

# NEWMARK

100 S ELLSWORTH AVE DOWNTOWN SAN MATEO

