

# 1 ADAMS STREET

CORNER OF SANDS AND ADAMS STREET

「AM  
PS」



# 1 ADAMS STREET



## Location

Corner of Sands and Adams Street

## Size

1,000 SF Ground Floor

## Frontage

86'

## Rent

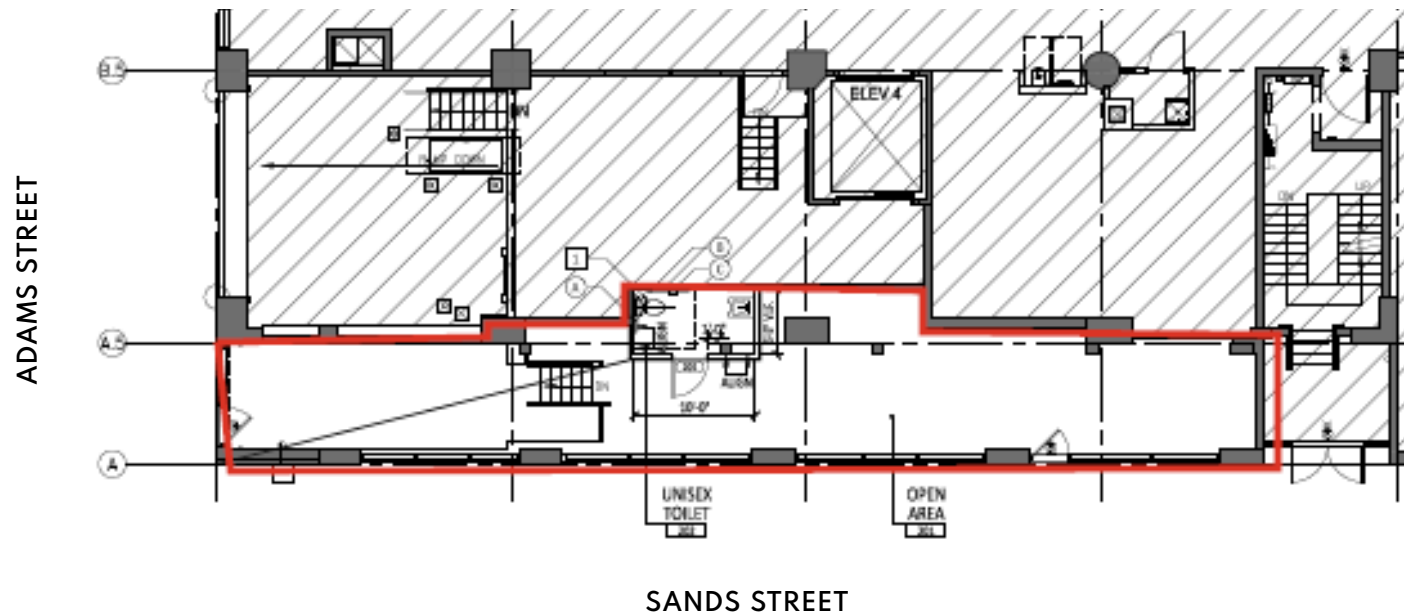
Upon Request

## Possession

30 Days

## Comments

- Garage door storefront
- At the base of Etsy's Headquarters
- Outdoor seating available
- All uses considered





# 1 ADAMS STREET

CORNER OF SANDS AND ADAMS STREET

AMPS



**\$ 203,427**

AVERAGE HOUSEHOLD INCOME

**\$ 3,332**

MEDIAN RENT

**40,620**

PEOPLE PER SQUARE MILE

**BICYCLE**

22 MIN TO GRAND CENTRAL  
23 MIN TO W'BURG

**SUBWAY**

22 MIN TO GRAND CENTRAL  
14 MIN TO W'BURG

**BUS**

14 MIN TO FULTON STREET  
8 MIN TO CADMAN

**FERRY**

25 MIN TO 34TH STREET  
10 MIN TO W'BURG



# 1 ADAMS STREET

CORNER OF SANDS AND ADAMS STREET

「AM  
PS」





# 1 ADAMS / STREET

CORNER OF SANDS AND ADAMS STREET

「AM  
PS」

**PLEASE CONTACT OUR EXCLUSIVE LEASING AGENTS:**

**FRITZ KEMERLING**

212.461.5971

[fkemerling@ampsre.com](mailto:fkemerling@ampsre.com)

**MAX SWERDLOFF**

212.328.8663

[mswerdloff@ampsre.com](mailto:mswerdloff@ampsre.com)