



STATION PARK

297,360 SF INDUSTRIAL SPACE
AVAILABLE FOR LEASE



40' CLEAR warehouse space, within minutes to the
WILLOW GROVE INTERCHANGE

330-339 S WARMINSTER RD
HATBORO, PA 19040

The
Flynn
Company

CADDY-CORNER TO
SEPTA TRAIN
STATION

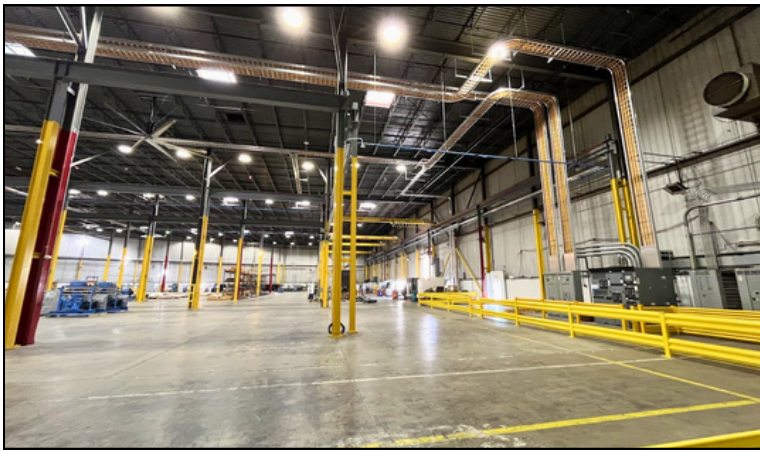
THE FLYNN COMPANY

WWW.FLYNNCO.COM | 1621 WOOD STREET, PHILADELPHIA, PA 19103 | 215.561.6565



SUITE 330

- 297,360 SF unit
- 102,938 SF warehouse area with **40' Clear**
- +/- 167,422 SF with 16'-19' clear
- +/- 27,000 SF office (built within warehouse envelope and therefore can be removed and create additional warehouse SF)
- 12" thick floors
- 13 Loading docks (expandable)
- 4 Drive-in door (expandable)
- Approx. 10,000 amps to the site
- **Eight 2-ton cranes**
- **Two 10-ton cranes**



CAMPUS HIGHLIGHTS



KINDERCARE ON SITE



HATBORO TRAIN STATION

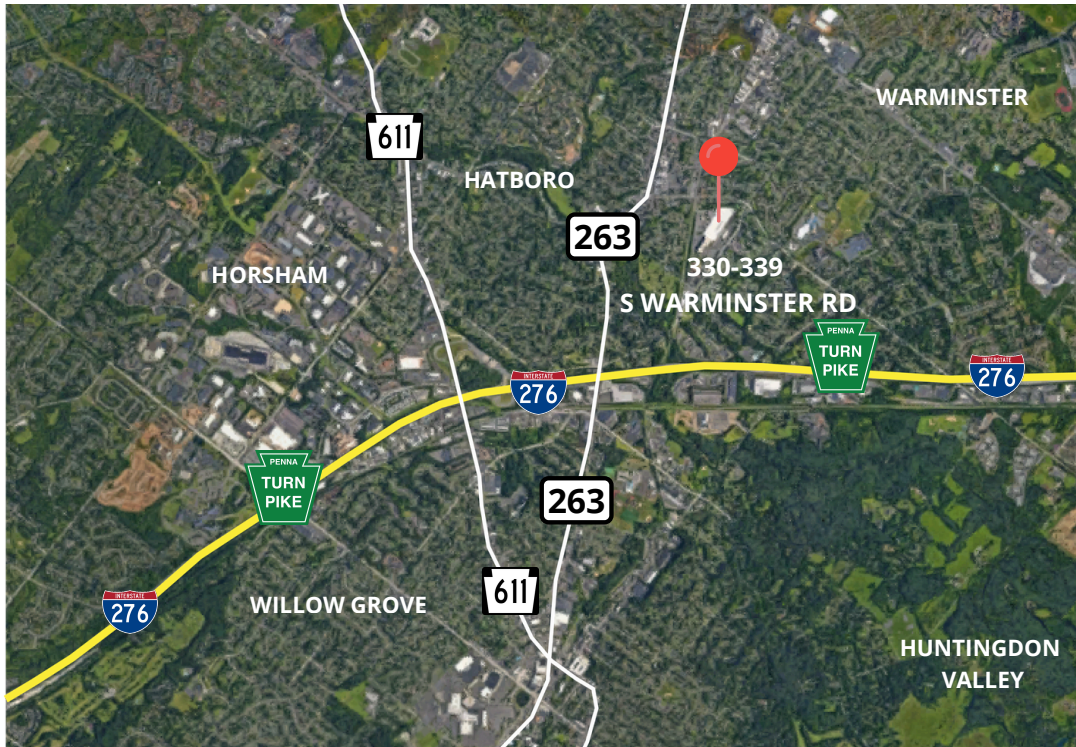


GRAB N' GO CAFE

- 412,454 SF multi-tenant complex on 29.47 acres
- Building Located caddy corner to the SEPTA Hatboro Train Station
- Two on-site generators
- 7 mega watts of power to the site
- 1249 parking spaces (3 per 1,000 sf)
- Tax Parcel 08-00-05734-00-9
- Fully wet sprinklered system with new pump installed 2019
- On-Site KinderCare Daycare
- On-Site Common Grab N' Go Café
- On-Site fitness center
- Zoned LI: Limited flex/office District in Hatboro Borough



LOCATION



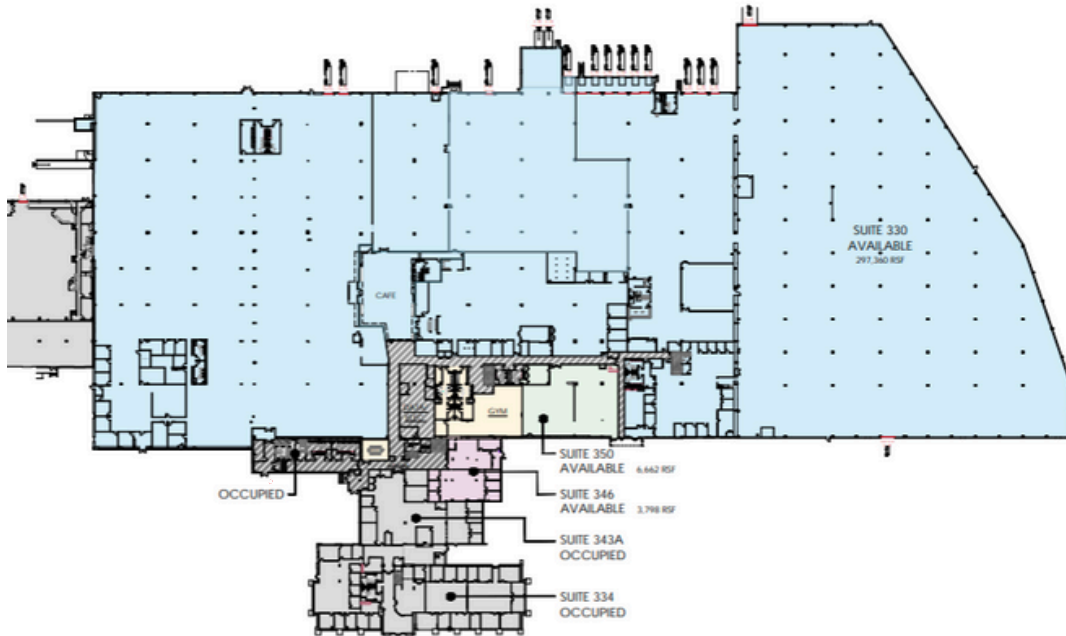
- Located at the intersection of Byberry and S. Warminster Rds
- Approximately 1.75 miles from the Willow Grove exit off the PA Turnpike.
- Additional access to the property is provided by Easton Rd (611), County Line Rd, Street Rd and York Rd.
- Close proximity to ample restaurants, shops and local amenities
- Trenton Mercer Airport 22.6 mi
- Philadelphia International Airport 28.1 mi





FLOORPLANS

TOTAL 297,360 SF





PROPERTY PHOTOS





MICHAEL BORSKI, SIOR
MBORSKIJR@FLYNNCO.COM
215-561-6565 X 119

KEVIN FLYNN JR
KFLYNNJR@FLYNNCO.COM
215-561-6565 X 121

MARK PAWLOWSKI
MPAWLOWSKI@FLYNNCO.COM
215-561-6565 X 118

THE FLYNN COMPANY

LEASING & INVESTMENT | PROPERTY MANAGEMENT | CONSTRUCTION SERVICES | PROPERTY MAINTENANCE
WWW.FLYNNCO.COM | 1621 WOOD STREET, PHILADELPHIA, PA 19103 | 215.561.6565

All information furnished regarding property for sale or lease is from sources deemed reliable, but no warranty or representation is made as to the accuracy thereof, and same is subject to errors, omissions, change of price, prior sale, lease, financing, withdrawal without notice or other conditions.