

# Interstate Commons

5701 W LATHAM ST., SUITE 101 | PHOENIX, ARIZONA

## FOR LEASE

MARCH 2025 OCCUPANCY



## PROPERTY FEATURES

- ±83,428 SF Total Building Size
- ±8,000 SF - ±42,000 SF Spaces
- 277/480V 3 Phase Power
- 24 ft. Clear Height
- Loop 202 Access at Van Buren
- Zoned A-I, City of Phoenix
- Concrete Tilt Up Construction
- 202 Freeway Visibility
- Truck Well Loading
- Grade Level Loading

## SUITE 101 FEATURES

- ±25,602 SF End Cap
- ±2,500 SF Office
- LED Warehouse Lighting
- EVAP Cooled Warehouse
- 4 Dock Doors
- 5 Grade Level Door
- Air Conditioned Showrooms
- Secured Yard
- Bonus Mezzanine



For more information, please contact:

### GARY ANDERSON

Executive Director  
+1 602 418 6570  
gary.anderson@cushwake.com

### NIK VALLENS

Director  
+1 602 589 5929  
nik.vallens@cushwake.com

2555 East Camelback Rd., Suite 400  
Phoenix, AZ 85016  
ph: +1 602 954 9000  
fx: +1 602 253 0528  
cushmanwakefield.com

OWNED, MANAGED & REDEVELOPED BY:

**EASTGROUP**  
PROPERTIES

NYSE: EGP

©2025 Cushman & Wakefield. All rights reserved. The information contained in this communication is strictly confidential. This information has been obtained from sources believed to be reliable but has not been verified. NO WARRANTY OR REPRESENTATION, EXPRESS OR IMPLIED, IS MADE AS TO THE CONDITION OF THE PROPERTY (OR PROPERTIES) REFERENCED HEREIN OR AS TO THE ACCURACY OR COMPLETENESS OF THE INFORMATION CONTAINED HEREIN, AND SAME IS SUBMITTED SUBJECT TO ERRORS, OMISSIONS, CHANGE OF PRICE, RENTAL OR OTHER CONDITIONS, WITHDRAWAL WITHOUT NOTICE, AND TO ANY SPECIAL LISTING CONDITIONS IMPOSED BY THE PROPERTY OWNER(S). ANY PROJECTIONS, OPINIONS OR ESTIMATES ARE SUBJECT TO UNCERTAINTY AND DO NOT SIGNIFY CURRENT OR FUTURE PROPERTY PERFORMANCE.

# Interstate Commons

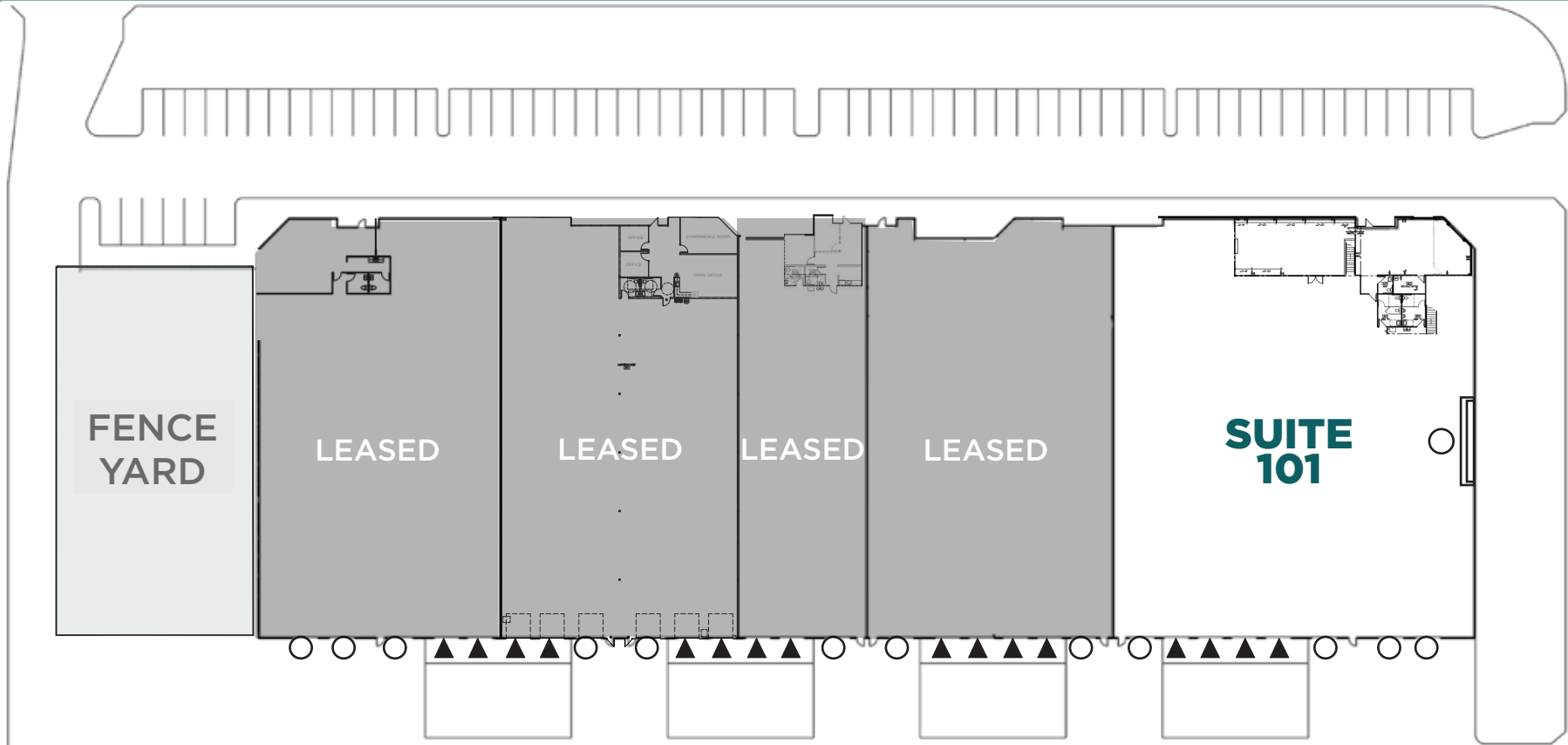
5701 W LATHAM ST., SUITE 101 | PHOENIX, ARIZONA

## FOR LEASE

LATHAM STREET

57<sup>TH</sup> AVENUE

2



▲ Truckwell ○ Grade



For more information, please contact:

**GARY ANDERSON**

Executive Director

+1 602 418 6570

[gary.anderson@cushwake.com](mailto:gary.anderson@cushwake.com)

**NIK VALLENS**

Director

+1 602 589 5929

[nik.vallens@cushwake.com](mailto:nik.vallens@cushwake.com)

2555 East Camelback Rd., Suite 400

Phoenix, AZ 85016

ph: +1 602 954 9000

fx: +1 602 253 0528

[cushmanwakefield.com](http://cushmanwakefield.com)

OWNED, MANAGED & REDEVELOPED BY:

**EASTGROUP**  
PROPERTIES

NYSE: EGP

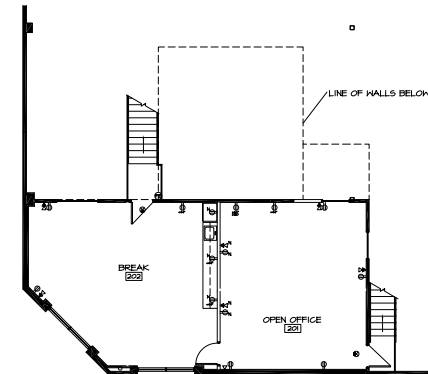
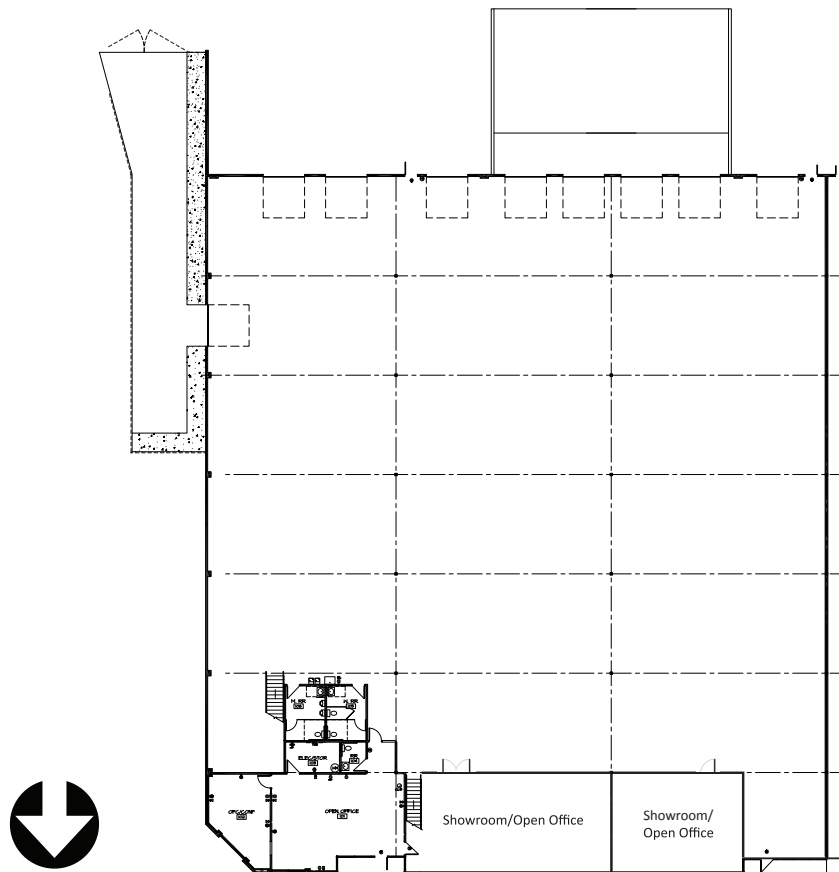
©2025 Cushman & Wakefield. All rights reserved. The information contained in this communication is strictly confidential. This information has been obtained from sources believed to be reliable but has not been verified. NO WARRANTY OR REPRESENTATION, EXPRESS OR IMPLIED, IS MADE AS TO THE CONDITION OF THE PROPERTY (OR PROPERTIES) REFERENCED HEREIN OR AS TO THE ACCURACY OR COMPLETENESS OF THE INFORMATION CONTAINED HEREIN, AND SAME IS SUBMITTED SUBJECT TO ERRORS, OMISSIONS, CHANGE OF PRICE, RENTAL OR OTHER CONDITIONS, WITHDRAWAL WITHOUT NOTICE, AND TO ANY SPECIAL LISTING CONDITIONS IMPOSED BY THE PROPERTY OWNER(S). ANY PROJECTIONS, OPINIONS OR ESTIMATES ARE SUBJECT TO UNCERTAINTY AND DO NOT SIGNIFY CURRENT OR FUTURE PROPERTY PERFORMANCE.

# Interstate Commons

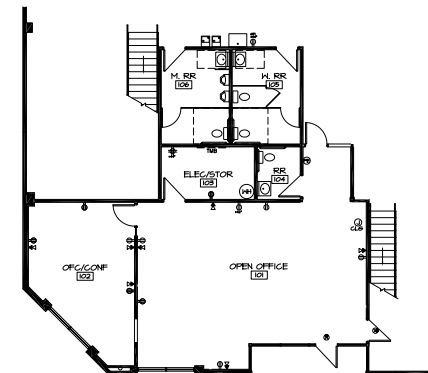
5701 W LATHAM ST., SUITE 101 | PHOENIX, ARIZONA

## FOR LEASE

## FLOOR PLAN



1<sup>ST</sup>  
MEZZANINE  
SPACE PLAN



2<sup>ND</sup>  
ENLARGED  
SPACE PLAN



For more information, please contact:

**GARY ANDERSON**

Executive Director

+1 602 418 6570

[gary.anderson@cushwake.com](mailto:gary.anderson@cushwake.com)

**NIK VALLENS**

Director

+1 602 589 5929

[nik.vallens@cushwake.com](mailto:nik.vallens@cushwake.com)

2555 East Camelback Rd., Suite 400

Phoenix, AZ 85016

ph: +1 602 954 9000

fx: +1 602 253 0528

[cushmanwakefield.com](http://cushmanwakefield.com)

OWNED, MANAGED & REDEVELOPED BY:

**EASTGROUP**  
PROPERTIES

NYSE: EGP

©2025 Cushman & Wakefield. All rights reserved. The information contained in this communication is strictly confidential. This information has been obtained from sources believed to be reliable but has not been verified. NO WARRANTY OR REPRESENTATION, EXPRESS OR IMPLIED, IS MADE AS TO THE CONDITION OF THE PROPERTY (OR PROPERTIES) REFERENCED HEREIN OR AS TO THE ACCURACY OR COMPLETENESS OF THE INFORMATION CONTAINED HEREIN, AND SAME IS SUBMITTED SUBJECT TO ERRORS, OMISSIONS, CHANGE OF PRICE, RENTAL OR OTHER CONDITIONS, WITHDRAWAL WITHOUT NOTICE, AND TO ANY SPECIAL LISTING CONDITIONS IMPOSED BY THE PROPERTY OWNER(S). ANY PROJECTIONS, OPINIONS OR ESTIMATES ARE SUBJECT TO UNCERTAINTY AND DO NOT SIGNIFY CURRENT OR FUTURE PROPERTY PERFORMANCE.



# Interstate Commons

5701 W LATHAM ST., SUITE 101 | PHOENIX, ARIZONA

## FOR LEASE



For more information, please contact:

**GARY ANDERSON**

Executive Director

+1 602 418 6570

[gary.anderson@cushwake.com](mailto:gary.anderson@cushwake.com)

**NIK VALLENS**

Director

+1 602 589 5929

[nik.vallens@cushwake.com](mailto:nik.vallens@cushwake.com)

2555 East Camelback Rd., Suite 400

Phoenix, AZ 85016

ph: +1 602 954 9000

fx: +1 602 253 0528

[cushmanwakefield.com](http://cushmanwakefield.com)

OWNED, MANAGED & REDEVELOPED BY:

**EASTGROUP**  
PROPERTIES

NYSE: EGP

©2025 Cushman & Wakefield. All rights reserved. The information contained in this communication is strictly confidential. This information has been obtained from sources believed to be reliable but has not been verified. NO WARRANTY OR REPRESENTATION, EXPRESS OR IMPLIED, IS MADE AS TO THE CONDITION OF THE PROPERTY (OR PROPERTIES) REFERENCED HEREIN OR AS TO THE ACCURACY OR COMPLETENESS OF THE INFORMATION CONTAINED HEREIN, AND SAME IS SUBMITTED SUBJECT TO ERRORS, OMISSIONS, CHANGE OF PRICE, RENTAL OR OTHER CONDITIONS, WITHDRAWAL WITHOUT NOTICE, AND TO ANY SPECIAL LISTING CONDITIONS IMPOSED BY THE PROPERTY OWNER(S). ANY PROJECTIONS, OPINIONS OR ESTIMATES ARE SUBJECT TO UNCERTAINTY AND DO NOT SIGNIFY CURRENT OR FUTURE PROPERTY PERFORMANCE.