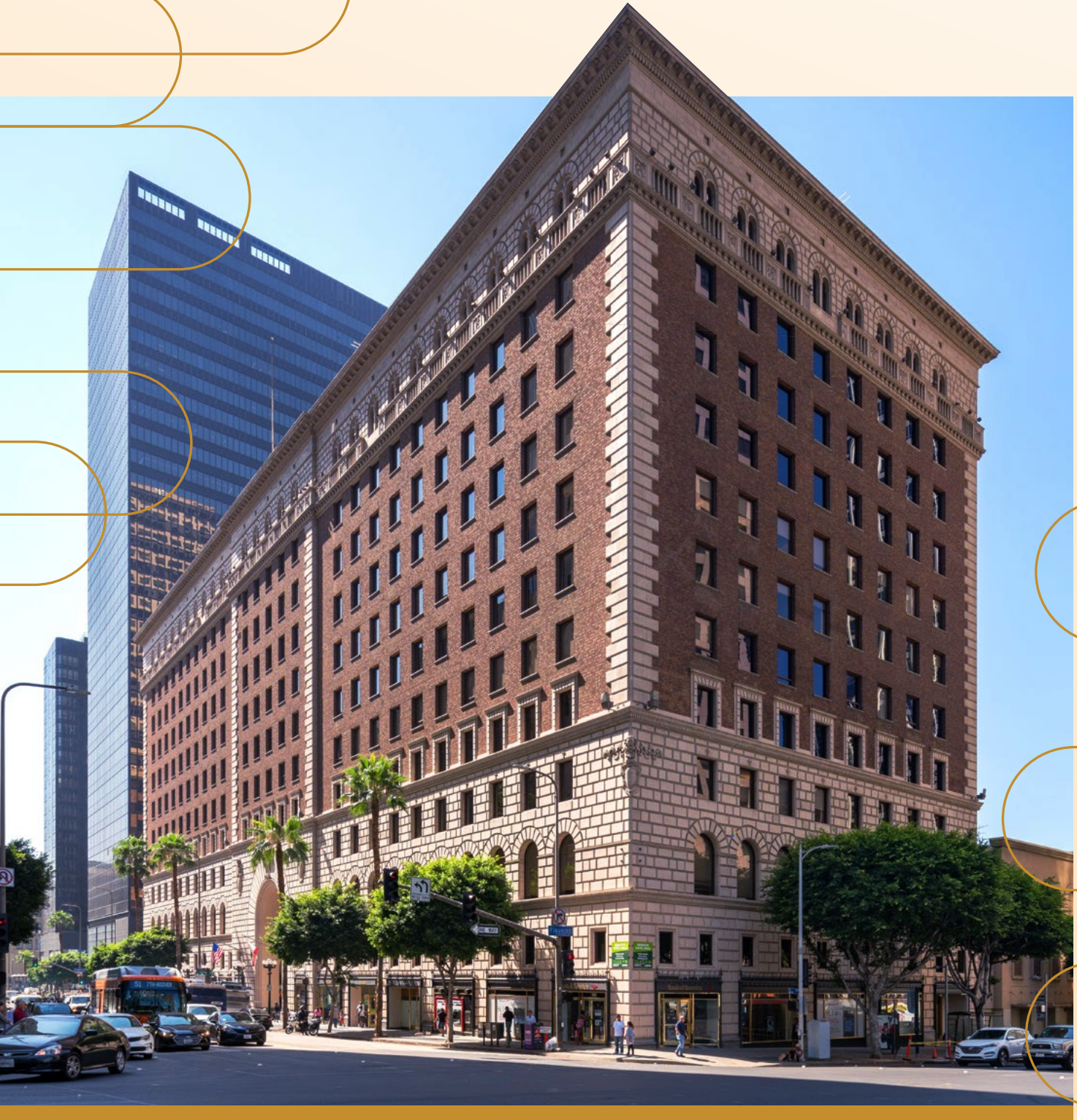


818 W. 7TH STREET



A CENTURY OF INNOVATION:

Where History Meets the Future

As 818 W 7th Street approaches its centennial, it stands as a beacon of innovation in LA's Financial District. Built in 1925 and beautifully restored, this architectural masterpiece bridges rich history with cutting-edge modernity. This Renaissance Revival landmark offers versatile spaces that inspire creativity while providing the prestige sought by forward-thinking companies. From architectural firms to tech startups and established corporations, 818 W 7th Street isn't just office space—it's a canvas for your company's future in the heart of downtown's most dynamic, business-friendly neighborhood.





Building Specifications

Building Size	±380,000 SF	Monthly Parking Rate	\$260 unreserved
No. of Stories	12	Year Built/Renovated	1925/2018
Parking Ratio	1/1,000	Asking Rate	\$37.00 PSF FSG



Building Highlights



Award-winning historic building with modern amenities



Newly renovated tenant-exclusive lounge and lobby



Exposed brick and concrete features for a unique aesthetic



Secure bicycle storage with shower facilities



High-speed fiber connectivity



24-hour manned security



Prime location across from 7th St Metro Rail Station



On-site banking and restaurants



Adjacent to FigAt7th, The BLOC, and Wilshire Grand



Flexible space options: creative, plug-and-play and build-to-suit





Availabilities

SUITE	SIZE (RSF)	ASKING RATE	COMMENTS	VIEW TOUR
Suite 200	14,049	\$37.00 PSF FSG	Raw condition, features exposed brick and concrete.	
Suite 220	15,174	\$37.00 PSF FSG	2nd generation condition.	
Suite 450	7,311	\$37.00 PSF FSG	Second generation traditional space.	
Suite 700	15,893	\$37.00 PSF FSG	2nd generation traditional space. Move-in ready.	
Suite 702	4,839	\$37.00 PSF FSG	2nd generation, creative spec suite. Move-in ready.	
Suite 710	6,194	\$37.00 PSF FSG	2nd generation creative spec suite. Move-in ready.	
Suite 830	7,058	\$37.00 PSF FSG	Brand new move-in ready creative spec suite.	
Suite 850	5,959	\$37.00 PSF FSG	2nd generation traditional space.	
Suite 880	3,948	\$37.00 PSF FSG	2nd generation traditional suite.	
Suite 900	4,427	\$37.00 PSF FSG	Core and shell condition.	
Suite 910	3,345	\$37.00 PSF FSG	2nd generation traditional space.	
Suite 930	5,501	\$37.00 PSF FSG	2nd generation space.	
Suite 960	3,200	\$37.00 PSF FSG	2nd generation space.	
Suite 980	4,582	\$37.00 PSF FSG	Creative spec suite.	
Suite 1105	2,243	\$37.00 PSF FSG	Raw condition, features exposed brick and concrete.	
Suite 1230	7,099	\$37.00 PSF FSG	Partial build out with office and kitchenette.	
Suite 1250*	5,472	\$37.00 PSF FSG	Raw condition, features exposed brick and concrete.	
Suite 1270*	1,621	\$37.00 PSF FSG	Raw condition, features exposed brick and concrete.	

*Suites 1250 & 1270 can be combined for a total of 7,092 RSF

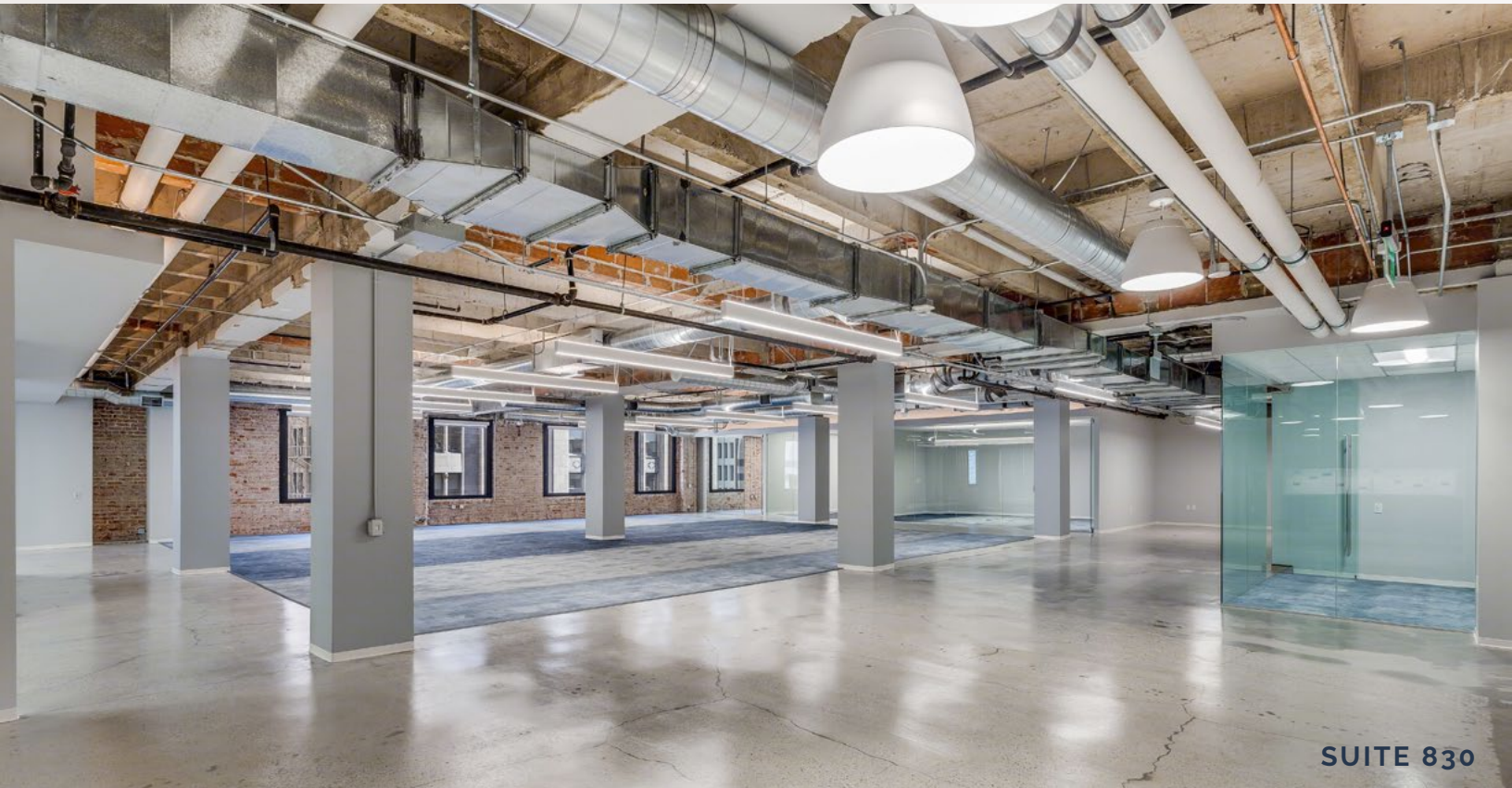




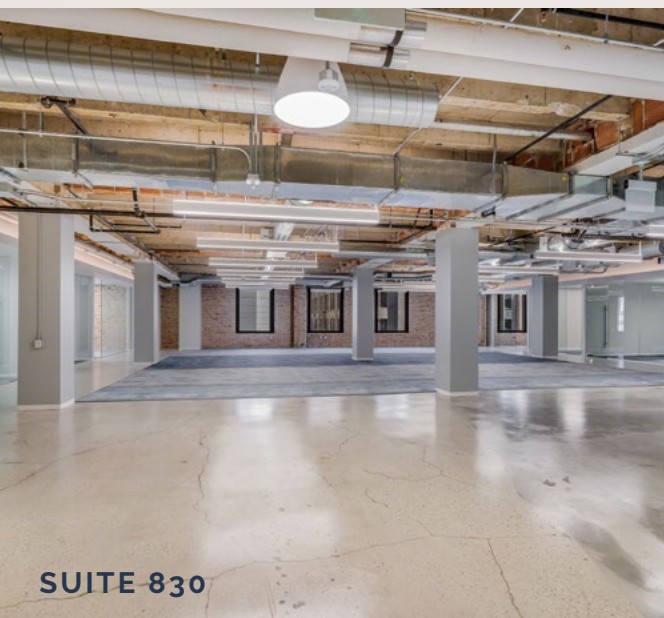
SUITE 980



SUITE 980



SUITE 830



SUITE 830



SUITE 830

818 W. 7TH STREET

BANK OF AMERICA
WOKANO
ANNA'S FISH MARKET DTLA

INTERCONTINENTAL
HOTEL

CORNER
BAKERY

HOTEL
FIGUEROA

RITZ-
CARLTON

JW
MARRIOTT

CRYPTO.COM
ARENA

LOS ANGELES
CONVENTION CENTER

MOXY
HOTEL

FIGAT7TH

THE
BLOC

WAYFARER
DTLA

CAPITAL
GRILL

PHILS
COFFEE

JINYA
85 DEGREES
JOLLIBEE
NORTHERN CAFÉ

BROADWAY

GRAND
AVE

WISHIRE BLVD

6TH ST

5TH ST

4TH ST

3RD ST

2ND ST

1ST ST

OLYMPIC BLVD

PICO BLVD

11TH ST

12TH ST

13TH ST

14TH ST

15TH ST

16TH ST

17TH ST

18TH ST

19TH ST

20TH ST

21ST ST

22ND ST

23RD ST

24TH ST

25TH ST

26TH ST

27TH ST

28TH ST

29TH ST

30TH ST

31ST ST

32ND ST

33RD ST

34TH ST

35TH ST

36TH ST

37TH ST

38TH ST

39TH ST

40TH ST

41ST ST

42ND ST

43RD ST

44TH ST

45TH ST

46TH ST

47TH ST

48TH ST

49TH ST

50TH ST

51ST ST

52ND ST

53RD ST

54TH ST

55TH ST

56TH ST

57TH ST

58TH ST

59TH ST

60TH ST

61ST ST

62ND ST

63RD ST

64TH ST

65TH ST

66TH ST

67TH ST

68TH ST

69TH ST

70TH ST

71ST ST

72ND ST

73RD ST

74TH ST

75TH ST

76TH ST

77TH ST

78TH ST

79TH ST

80TH ST

81ST ST

82ND ST

83RD ST

84TH ST

85TH ST

86TH ST

87TH ST

88TH ST

89TH ST

90TH ST

91ST ST

92ND ST

93RD ST

94TH ST

95TH ST

96TH ST

97TH ST

98TH ST

99TH ST

100TH ST

101ST ST

102ND ST

103RD ST

104TH ST

105TH ST

106TH ST

107TH ST

108TH ST

109TH ST

110TH ST

111TH ST

112TH ST

113TH ST

114TH ST

115TH ST

116TH ST

117TH ST

118TH ST

119TH ST

120TH ST

121ST ST

122ND ST

123RD ST

124TH ST

125TH ST

126TH ST

127TH ST

128TH ST

129TH ST

130TH ST

131ST ST

132ND ST

133RD ST

134TH ST

135TH ST

136TH ST

137TH ST

138TH ST

139TH ST

140TH ST

141ST ST

142ND ST

143RD ST

144TH ST

145TH ST

146TH ST

147TH ST

148TH ST

149TH ST

150TH ST

151ST ST

152ND ST

153RD ST

154TH ST

155TH ST

156TH ST

157TH ST

158TH ST

159TH ST

160TH ST

161ST ST

162ND ST

163RD ST

164TH ST

165TH ST

166TH ST

167TH ST

168TH ST

169TH ST

170TH ST

171ST ST

172ND ST

173RD ST

174TH ST

175TH ST

176TH ST

177TH ST

178TH ST

179TH ST

180TH ST

181ST ST

182ND ST

183RD ST

184TH ST

185TH ST

186TH ST

187TH ST

188TH ST

189TH ST

190TH ST

191ST ST

192ND ST

193RD ST

194TH ST

195TH ST

196TH ST

197TH ST

198TH ST

199TH ST

200TH ST

201ST ST

202ND ST

203RD ST

204TH ST

205TH ST

206TH ST

207TH ST

208TH ST

209TH ST

210TH ST

211ST ST

212ND ST

213RD ST

214TH ST

215TH ST

216TH ST

217TH ST

218TH ST

219TH ST

220TH ST

221ST ST

222ND ST

223RD ST

224TH ST

225TH ST

226TH ST

227TH ST

228TH ST

229TH ST

230TH ST

231ST ST

232ND ST

233RD ST

234TH ST

235TH ST

236TH ST

237TH ST

238TH ST

239TH ST

240TH ST

241ST ST

242ND ST

243RD ST

244TH ST

245TH ST

246TH ST

247TH ST

248TH ST

249TH ST

250TH ST

251ST ST

252ND ST

253RD ST

254TH ST

255TH ST

256TH ST

257TH ST

258TH ST

259TH ST

260TH ST

261ST ST

262ND ST

263RD ST

264TH ST

265TH ST

266TH ST

267TH ST

268TH ST

269TH ST

270TH ST

271ST ST

272ND ST

273RD ST

274TH ST

275TH ST

276TH ST

277TH ST

278TH ST

279TH ST

280TH ST

281ST ST

282ND ST

283RD ST

284TH ST

285TH ST

286TH ST

287TH ST

288TH ST

289TH ST

290TH ST

291ST ST

292ND ST

293RD ST

294TH ST

295TH ST



ILLY ESPRESSAMENTE
SAVOCA
THE MIXING ROOM
GLANCE LOBBY BAR
YARD HOUSE
SOL AGAVE
FLEMING'S
BOCA AT THE CONGA ROOM
FIXINS SOUL KITCHEN
KATSUYA L.A. LIVE
STARBUCKS
SMASHBURGER
TOM'S WATCH BAR



REGAL L.A. LIVE
THE RITZ-CARLTON SPA
LUCKY STRIKE
CONGA ROOM
THE NOVO
THE GRAMMY MUSEUM®
THE TERRACE AT L.A. LIVE
XBOX PLAZA
MICROSOFT THEATER
EVENT DECK
TEAM LA STORE



CALIFORNIA PIZZA KITCHEN
COCO FRESH TEA & JUICE
FIVE GUYS
GEORGE'S GREEK GRILL
INDUS BY SAFFRON
MENDOCINO FARMS
MIGHTY BOWL
MORTON'S THE STEAKHOUSE
NEW MOON CAFÉ
OCHO MEXICAN GRILL
OLEEGO BY PARKS BBQ
SALATA
SBARRO
SPRINKLES CUPCAKES
STARBUCKS
THE MELT
TWIST & GRILL
VELO COFFEE



BATH & BODY WORKS
DOWNTOWN HI-TECH
H&M
LENSCRAFTERS
M.A.C COSMETICS
NORDSTROM RACK
SEPHORA
SUNGLASS HUT
T-MOBILE
TARGET
VICTORIA'S SECRET
VICTORIA'S SECRET PINK
ZARA



ALAMO DRAFT CINEMA
BELLALINA GELATO
CAFE BALZAC
DISTRICT DTLA
HATCH
JOEY DTLA
KOREAN KIMBAP EXPRESS
MARUGAME UDON
STARBUCKS
VIDEO VORTEX BAR



EYES ON THE BLOC
DRYBAR
GNC LIVEWELL
LAMAY NAIL SPA
OIL + CREAM SPA
SCULPT
JEWELRY PAVILION

818 W. 7TH STREET

DANA VARGAS, SIOR

Senior Vice President
+1 213 239 6121
Dana.Vargas@jll.com
License #: CA - 01943620

JAMES E. MALONE

Managing Director
+1 213 239 6021
James.Malone@jll.com
License #: CA - 01281488

TIM MILLER

Executive Vice President
+1 213 239 6024
Tim.Miller@jll.com
License #: CA - 01419710



Although information has been obtained from sources deemed reliable, neither Owner nor JLL makes any guarantees, warranties or representations, express or implied, as to the completeness or accuracy as to the information contained herein. Any projections, opinions, assumptions or estimates used are for example only. There may be differences between projected and actual results, and those differences may be material. The Property may be withdrawn without notice. Neither Owner nor JLL accepts any liability for any loss or damage suffered by any party resulting from reliance on this information. If the recipient of this information has signed a confidentiality agreement regarding this matter, this information is subject to the terms of that agreement. ©2025 Jones Lang LaSalle IP, Inc. All rights reserved.

