



# 1025 Westchester Avenue

WHITE PLAINS, NY

*Your Corner Office Awaits!*

## Features

- Full-service cafeteria with indoor and outdoor seating within the building
- Conferencing facility and fitness center with showers and locker rooms within the office park
- Floor plates provide for expansive window line
- On-site property management
- 24/7 card key access
- Park is serviced by the Westchester County Bee-Line bus system
- Direct access to all major highways including I-287, the Hutchinson River Parkway & I-684
- Free on-site surface parking at the ration of 3.3/1,000 SF

## Specifications

Size:	Partial 1 <sup>st</sup> floor: 1,443 RSF
	Partial 2 <sup>nd</sup> floor: 5,303 RSF – 2 Corner offices
	Partial 3 <sup>rd</sup> floor: 6,360 RSF – 2 Corner offices
Rent:	\$28.00/SF + electric
Availability:	Immediate
Term:	5 – 10 Years

*For information, please contact:*

**Glenn P. Walsh**  
Executive Managing Director  
t 914-881-1096  
[glenn.walsh@nmrk.com](mailto:glenn.walsh@nmrk.com)

**Lawrence A. Ruggieri**  
Senior Managing Director  
t 914-881-1025  
[larry.ruggieri@nmrk.com](mailto:larry.ruggieri@nmrk.com)

**RPW GROUP** INC.

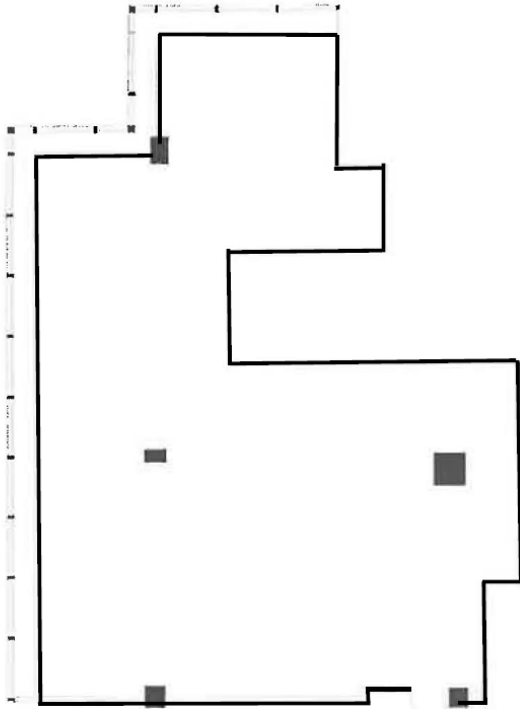
**NEWMARK**

800 Westchester Avenue, Suite S-706, Rye Brook, NY 10573 | [nmrk.com](http://nmrk.com)

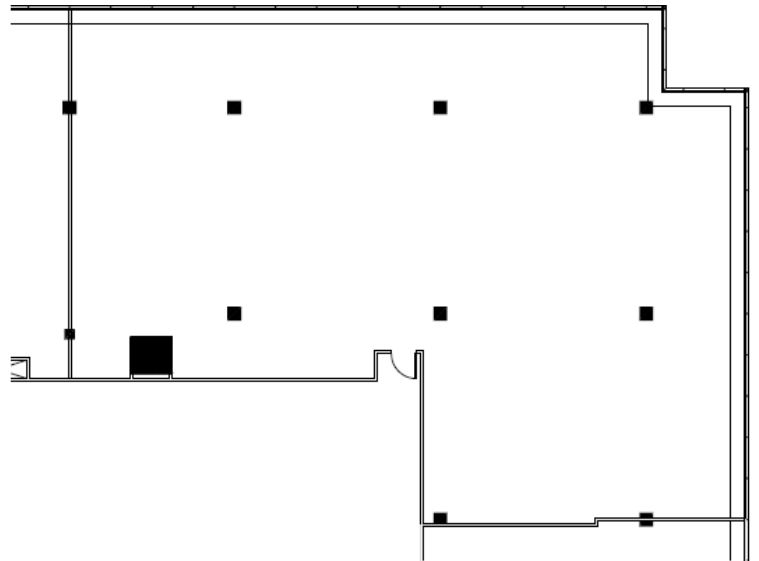
The information contained herein has been obtained from sources deemed reliable but has not been verified and no guarantee, warranty or representation, either express or implied, is made with respect to such information. Terms of sale or lease and availability are subject to change or withdrawal without notice.

# 1025 Westchester Avenue

First Floor – 1,443 RSF



Second Floor – 5,303 RSF



Third Floor – 6,360 RSF

