



# Kensington Office Center

411 Business Center Dr  
Mount Prospect, IL 60056

The Kensington Professional Center is located in Mount Prospect, Illinois, close to the park with walking trails and a pond. The buildings are perfect for any business needing office space.

## **MOATS**

OFFICE PROPERTIES

Office: 847-359-2121

Ryan Moats: 847-363-9700

PO Box 1189  
Palatine, IL 60078





# Kensington Office Center

## 411 Business Center Dr

### About us

For over twenty years, Moats Office Properties has owned and operated office buildings in Chicago's Northwest Suburbs. We are a family owned and operated business and strive for the best in customer satisfaction.







Kensington Office Center  
411 Business Center Dr



**MOATS**

OFFICE PROPERTIES

Office: 847-359-2121

Ryan Moats: 847-363-9700

PO Box 1189  
Palatine, IL 60078





# Kensington Office Center

## 411 Business Center Dr

### Property Facts

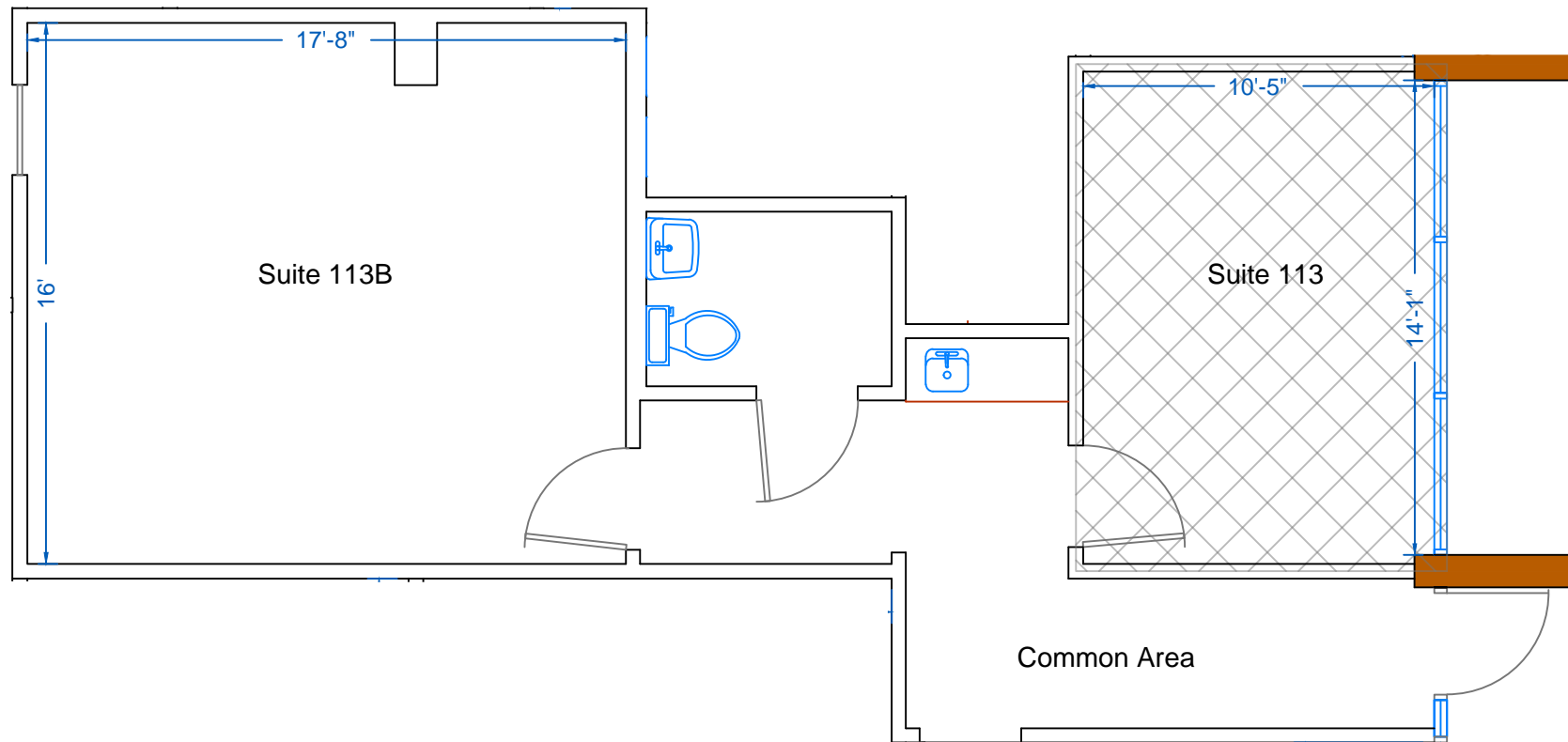
- Building Type: Office
- Year Built/Renovated: 1980/2012
- Building Height: 1 Story
- Building Size: 31,117 SF
- Parking: 143 Parking Spaces





# Kensington Professional Center

411 E Business Center Dr, Suite 113B  
356 Rentable Square Feet



Scale: 3/16" = 1'-0"

PO Box 1189  
Palatine, IL 60078

**MOATS**  
OFFICE PROPERTIES

Office: 847-359-2121  
Ryan: 847-363-9700





## Property Amenities

- ADA Accessible
- Controlled temperature settings
- Private entrances
- High ceiling
- Signage
- Above average 4.20 per 1,000 SF parking ratio
- Walking trails

## Nearby Corporate Users

- Metropolitan Life
- Cummins Allison
- CVS Caremark
- Sumitomo Electric
- Siemens
- Comcast

# MOATS

OFFICE PROPERTIES

Office: 847-359-2121

Ryan Moats: 847-363-9700

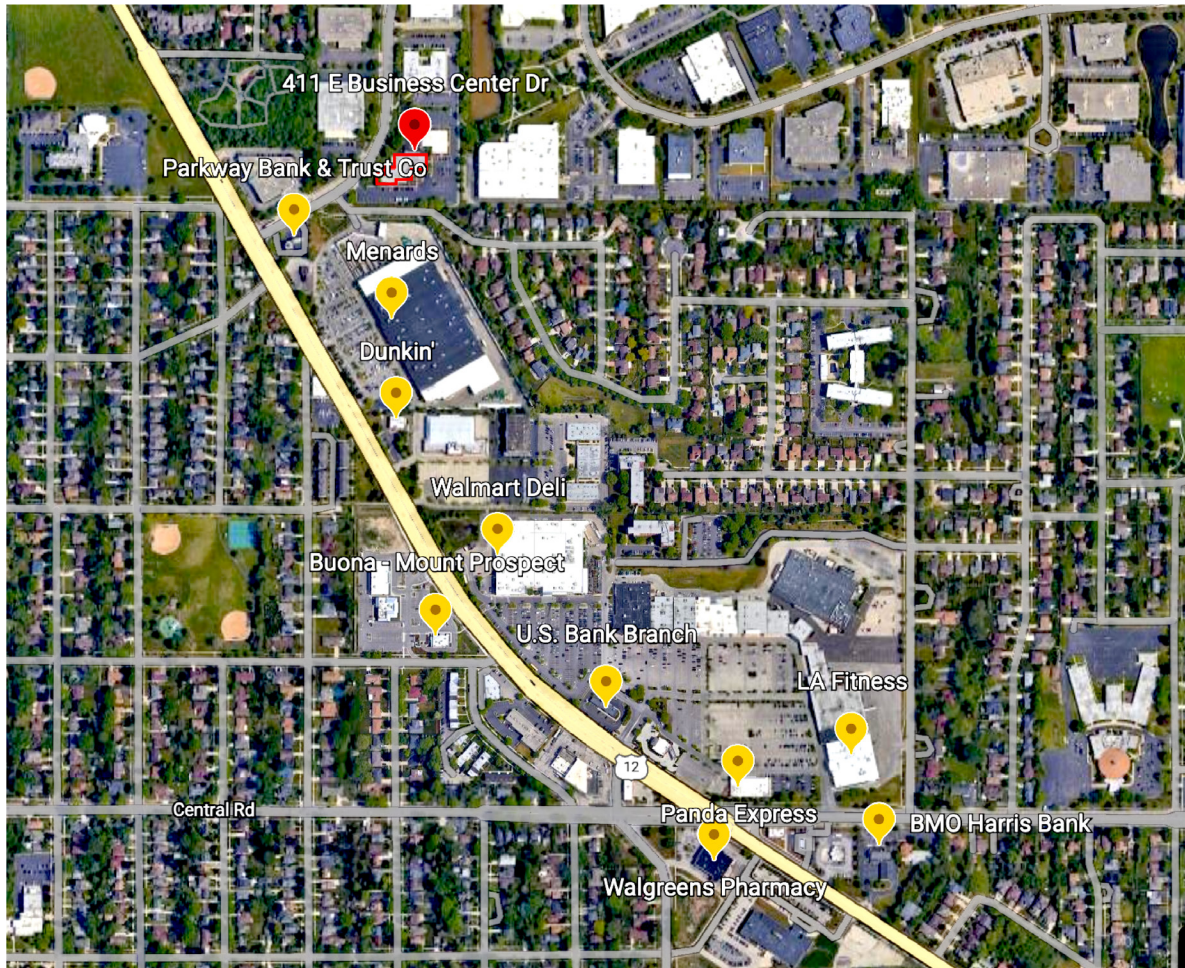
PO Box 1189  
Palatine, IL 60078





# Kensington Office Center

411 Business Center Dr



411 E Business Center Dr  
Mount Prospect, IL

## MOATS

OFFICE PROPERTIES

Office: 847-359-2121

Ryan Moats: 847-363-9700



## This image shows a single sheet of white paper with horizontal blue ruling lines. The lines are evenly spaced and run across the width of the page. There are no margins, text, or other markings on the paper.



Palatine, IL 60078