

SINGLE-TENANT COMMERCIAL PROPERTY FOR LEASE

112 W 32ND ST

GARDEN CITY, ID 83714



rallensrealty.com



RALLENS REALTY
CONSULTANTS

FOR LEASE



PROPERTY INFORMATION

ADDRESS	112 W 32nd St Garden City, ID 83714
PROPERTY TYPE	Commercial/Flex/ Warehouse
MAIN BUILDING SF	±4,000 SF
MEZZANINE STORAGE SF	±775 SF
STORAGE BUILDING SF	±1,280 SF
FENCED YARD	±5,500 SF
ZONING	C-2
LEASE RATE	\$7,525/month NNN
GRADE LEVEL DOOR	12'x12'
CEILING HEIGHT	13'

HIGHLIGHTS

- Versatile commercial property in the heart of Garden City
- Surrounded by growth and re-development
- Minutes from freeway access and Downtown Boise

This information, while not guaranteed, is from sources we believe to be reliable. This data is subject to price change, corrections, errors, omissions, prior sale, and/or withdrawal.

BEN FULCHER

208.859.7407 | ben@rallensrealty.com

RALLENS REALTY CONSULTANTS | 401 W FRONT STREET, SUITE 307 | BOISE, ID 83702 | 208.996.1055



112 W 32ND ST GARDEN CITY, ID 83714

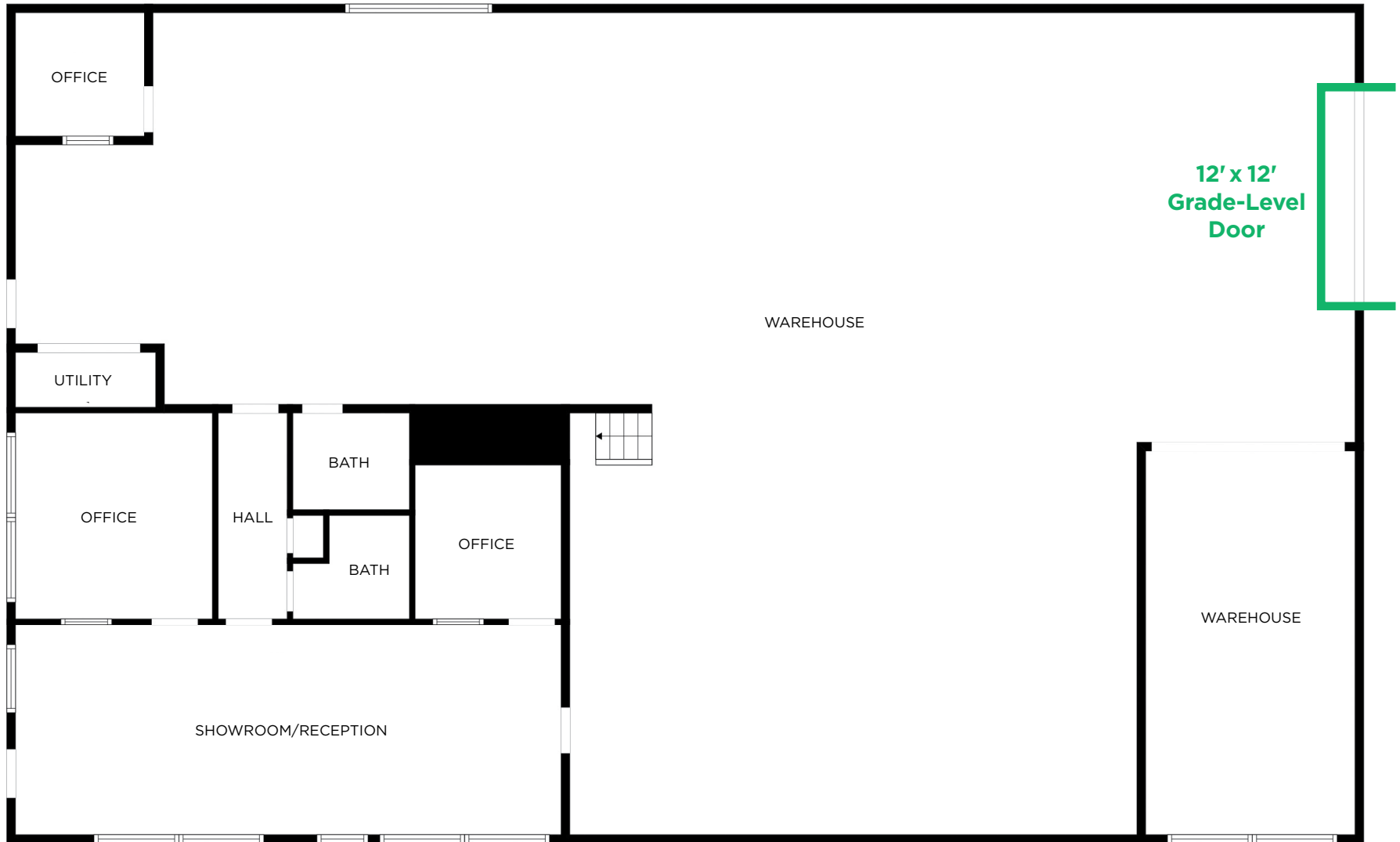


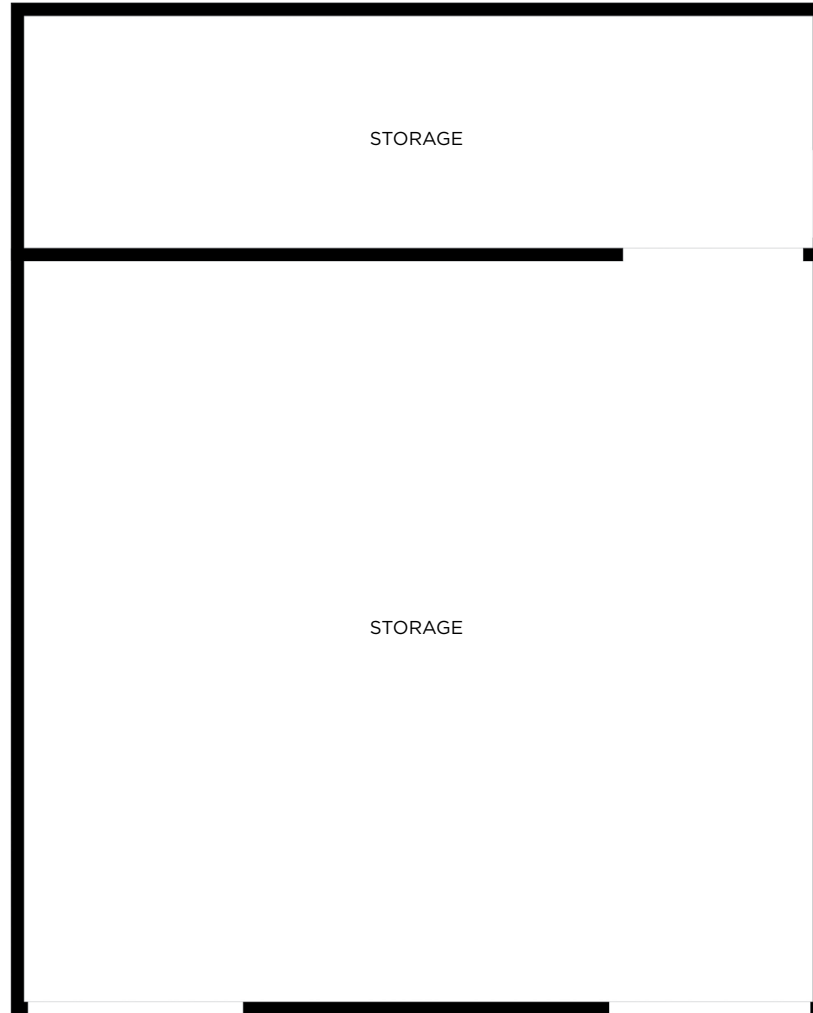
BEN FULCHER

208.859.7407 | ben@rallensrealty.com



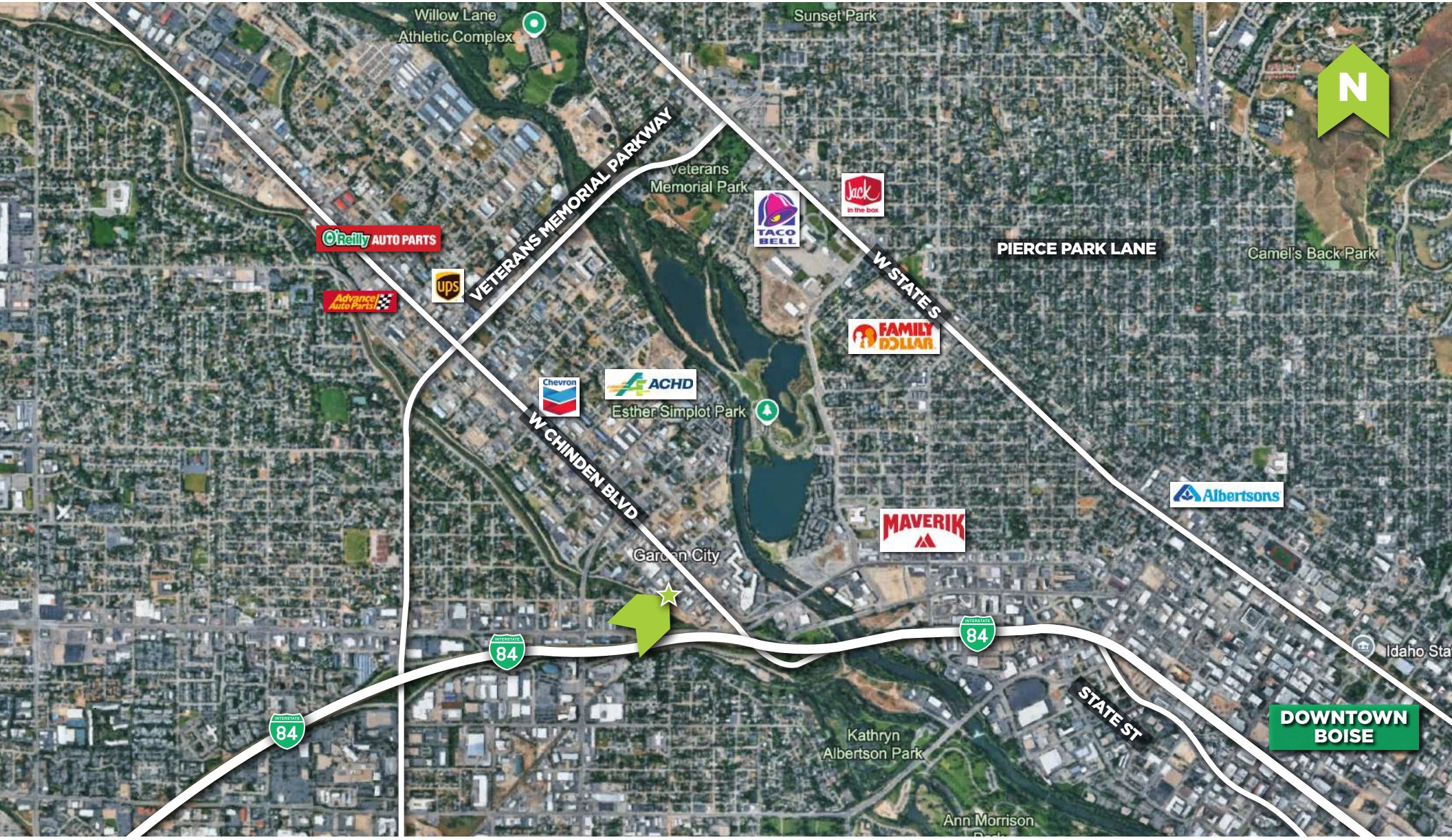
rallensrealty.com







112 W 32ND ST GARDEN CITY, ID 83714



BEN FULCHER

208.859.7407 | ben@rallensrealty.com



rallensrealty.com

112 W 32ND ST GARDEN CITY, ID 83714



BEN FULCHER
208.859.7407 | ben@rallensrealty.com

