



Colliers

Accelerating success.

**Jamaal Brown**

Vice President

503 499 0064

[jamaal.brown@colliers.com](mailto:jamaal.brown@colliers.com)

For Lease

Class A Waterfront Opportunity





Lush landscaping and expansive river views create a peaceful office setting, just minutes from Downtown Portland.



5550 S Macadam is a Class A waterfront property in John's Landing on the Willamette River. The project offers a common area patio overlooking the water and a common courtyard with seating area. Both are great for outside workspace. Indoor spaces include ample glass line that lend to expansive views and abundant natural light.

## Features & Amenities



Two levels of below-grade and surface parking



Superior location just outside Downtown Portland



Well-maintained landscaping and common spaces



Direct access to Greenway nature trail



Walking distance to multiple restaurants







## Building Highlights

- Fully renovated lobby that includes a 3-story glass atrium
- Elevator and common corridor upgrades with high-end finishes
- Onsite fitness facility with showers and lockers
- Upgraded restrooms
- Modern contemporary design

## Availabilities

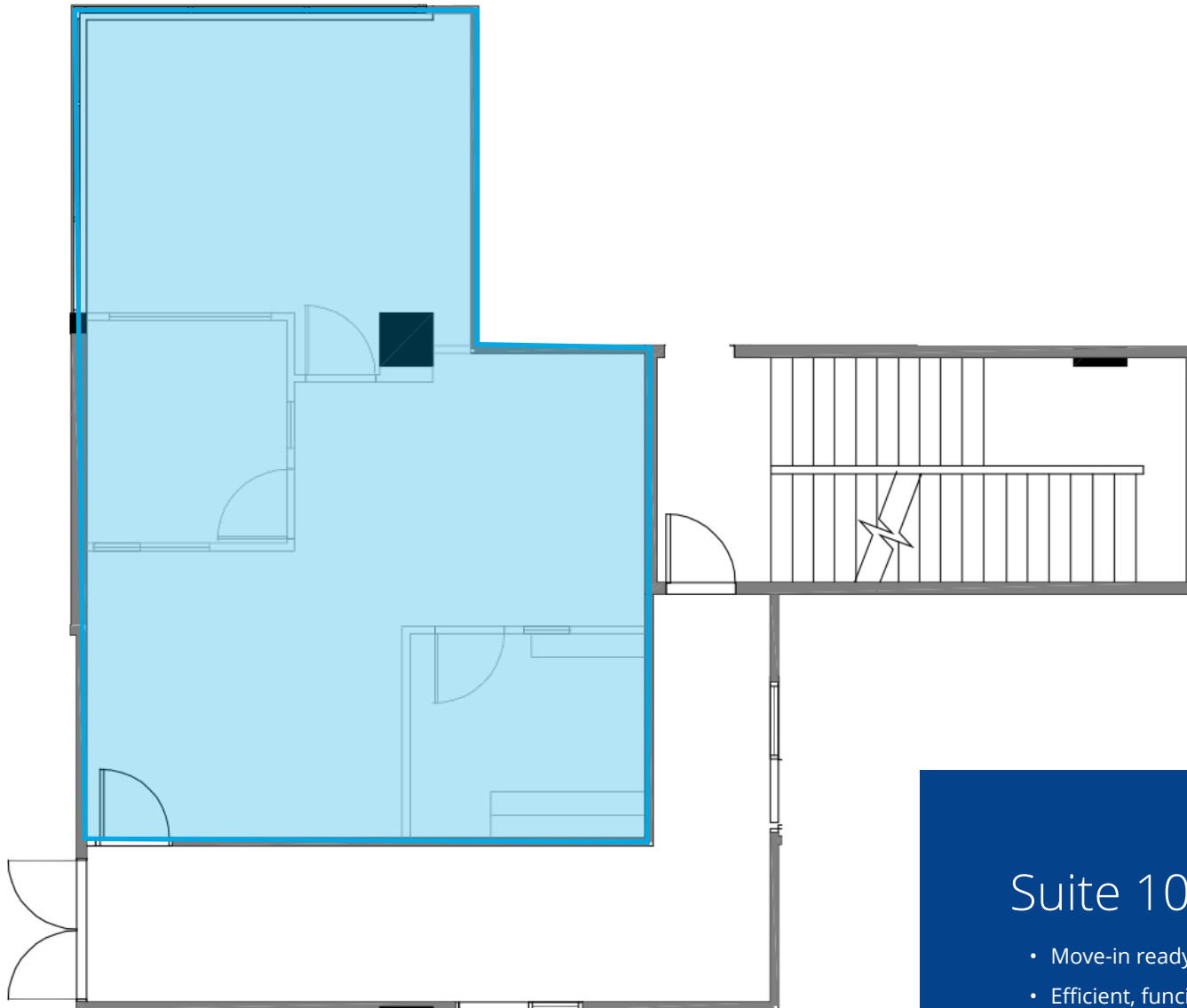
Suite 105	890 RSF	Available
Suite 215	2,767 RSF	Available
Suite 300	2,500 - 7,623 RSF	Available
Suite 300A	3,066 RSF	Available
Suite 300B	4,324 RSF	Available







## First Floor

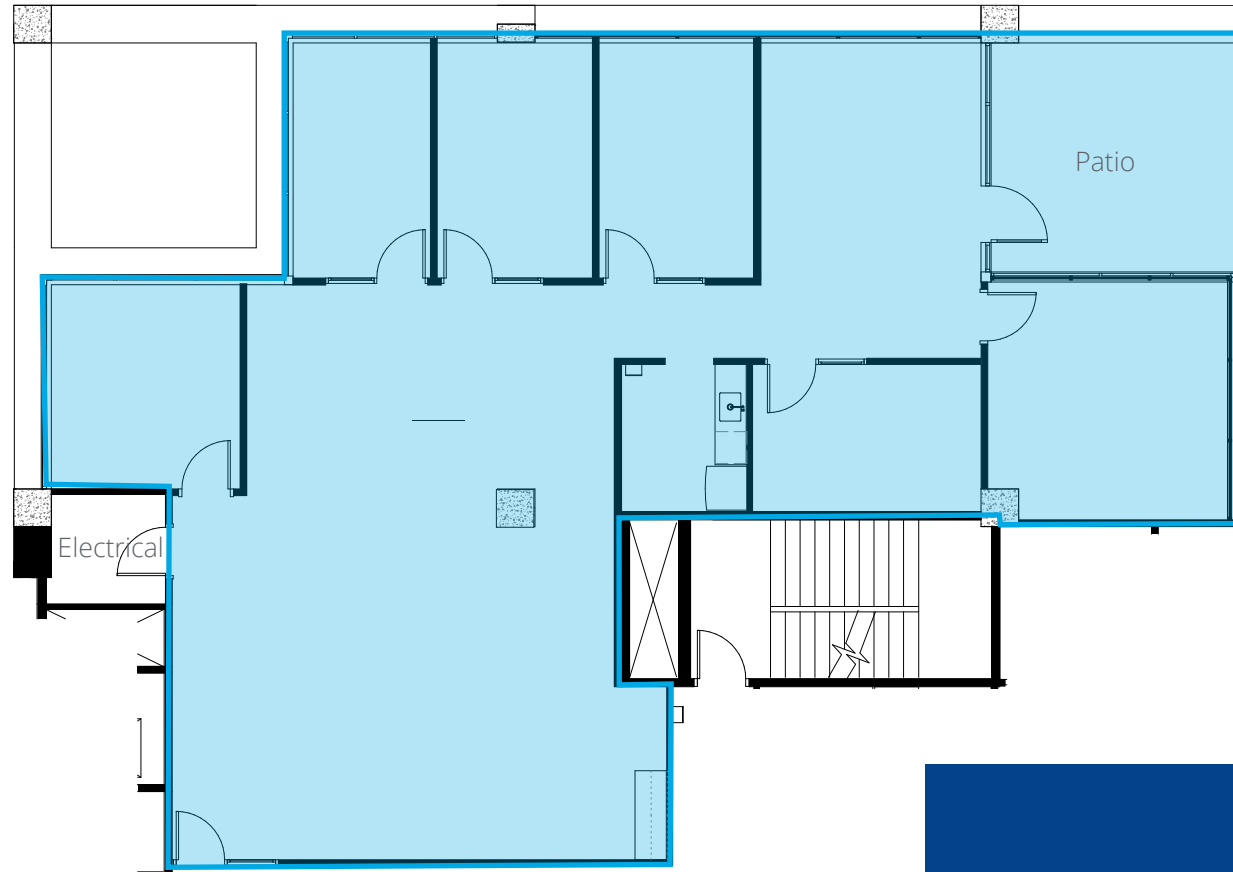


### Suite 105 / 890 RSF

- Move-in ready
- Efficient, functional layout
- Ideal exposure off building lobby
- \$35.00 - \$37.00/SF FSG



## Second Floor

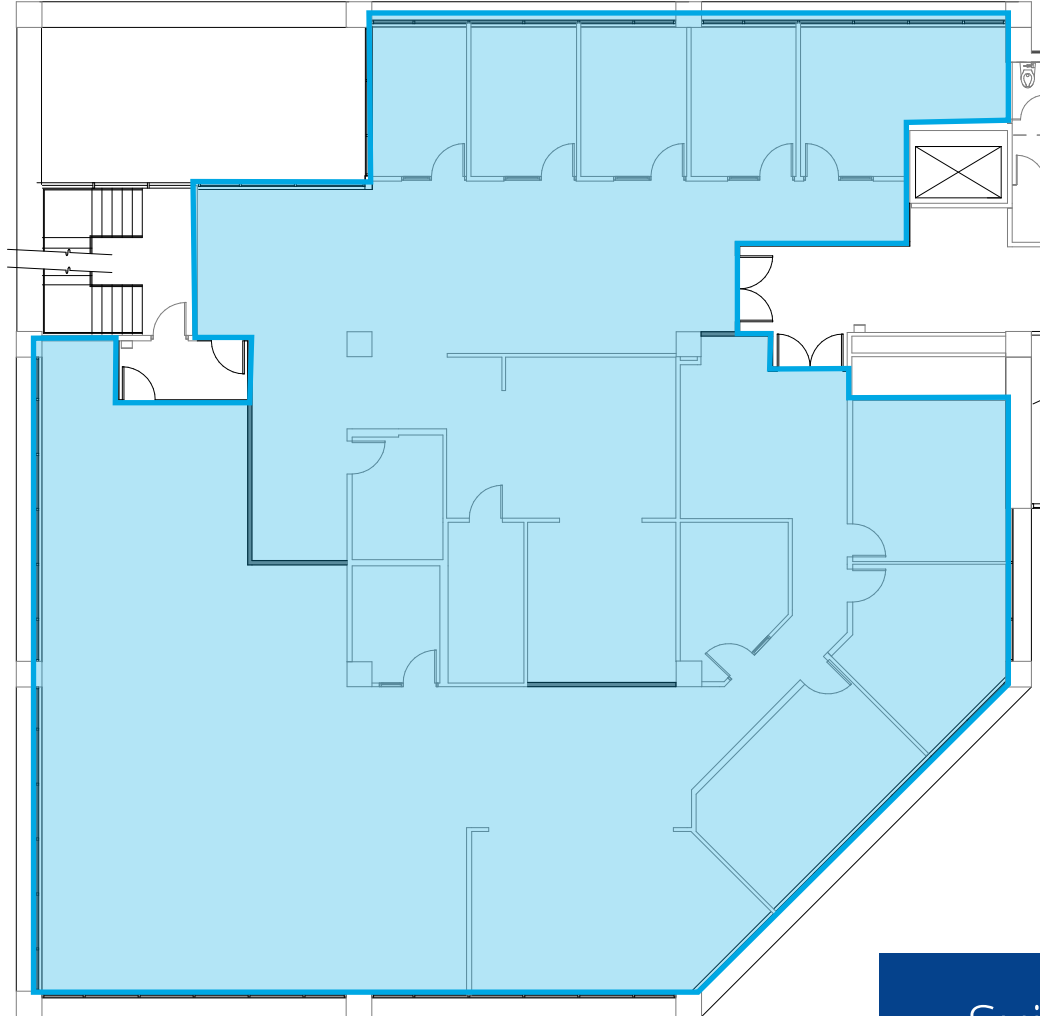


### Suite 215 / 2,767 RSF

- Move-in ready
- Private deck included at no additional rent
- \$30.00 - \$32.00/SF FSG



## Third Floor

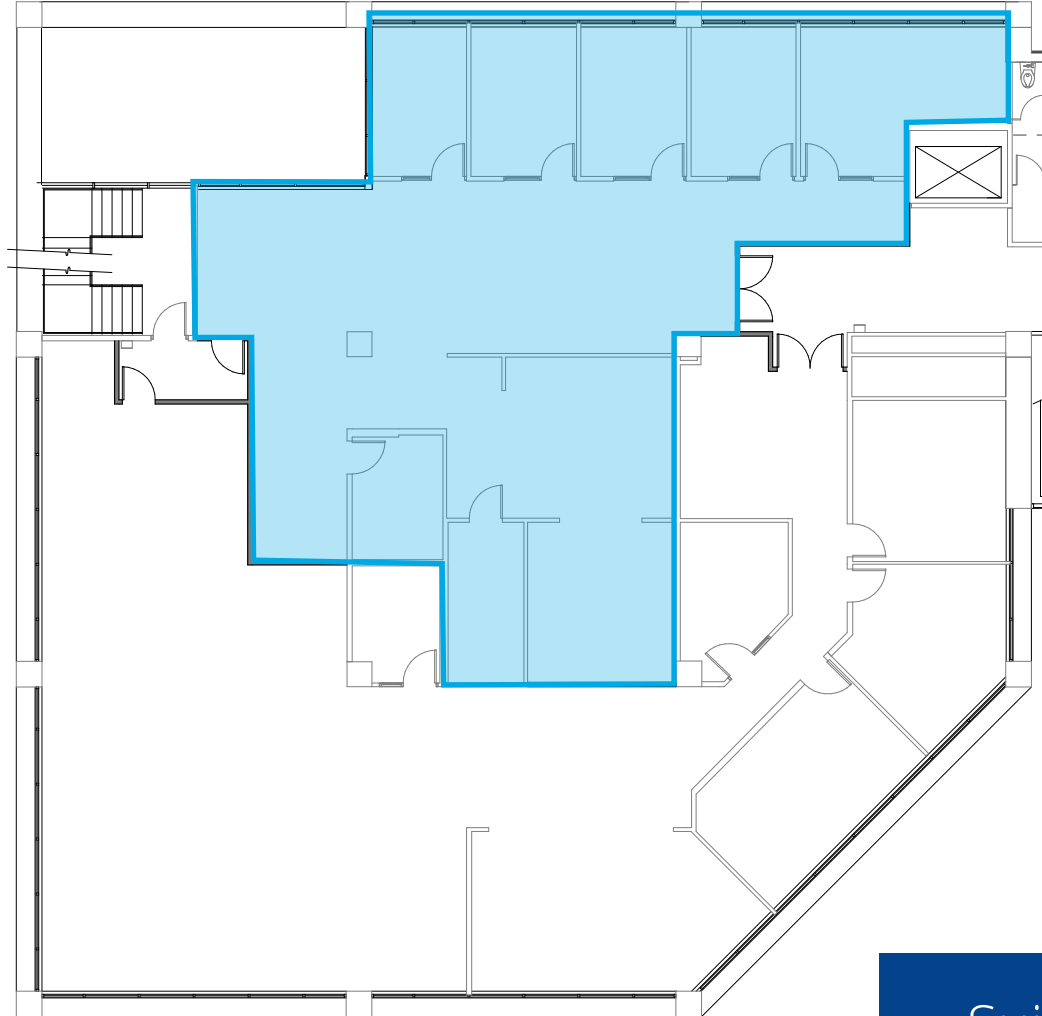


### Suite 300 / 7,623 RSF

- River views
- Recently updated
- High-end finishes
- \$35.00 - \$37.00/SF FSG



## Third Floor

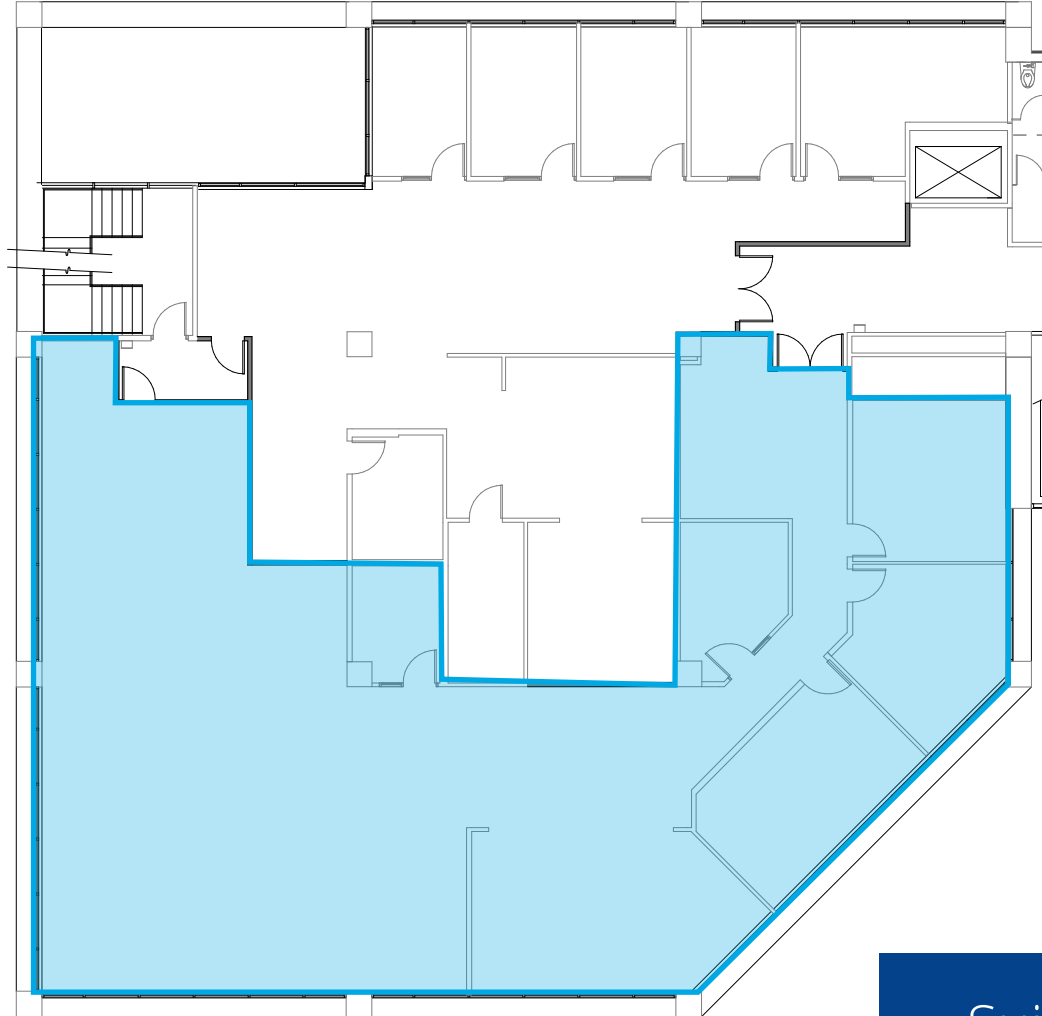


### Suite 300A / 3,066 RSF

- Efficient layout
- Recently updated
- High-end finishes
- \$30.00 - \$32.00/SF FSG



## Third Floor



### Suite 300B / 4,324 RSF

- River views
- Recently updated
- High-end finishes
- \$35.00 - \$37.00/SF FSG





851 SW 6th Ave, Suite 1600  
Portland, OR 97239  
P: +1 503 223 3123  
colliers.com

## Jamaal Brown

Vice President  
503 499 0064  
jamaal.brown@colliers.com



Downtown Portland

Willamette River

Greenway Trail

This document has been prepared by Colliers for advertising and general information only. Colliers makes no guarantees, representations or warranties of any kind, expressed or implied, regarding the information including, but not limited to, warranties of content, accuracy and reliability. Any interested party should undertake their own inquiries as to the accuracy of the information. Colliers excludes unequivocally all inferred or implied terms, conditions and warranties arising out of this document and excludes all liability for loss and damages arising there from. This publication is the copyrighted property of Colliers and/or its licensor(s). ©2026. All rights reserved.