



- Ideal for medical, business, or professional office space
- ±9,440 sf
- 0.68-acre parcel
- \$2,250,000 sale price
- Built in 2007
- Convenient access to I-40, in the Airport area
- Parking close to building entrances
- Attractive glass and brick exterior
- Card key access system
- Building signage opportunity

### Get more information

#### **Brent Basham**

Vice President

+1 615 727 7406

[brent.basham@avisonyoung.com](mailto:brent.basham@avisonyoung.com)

700 12th Avenue South  
Suite 200  
Nashville, TN 37203  
+1 615 727 7400

## FLOORPLAN

**First floor**

Architectural floor plan of the first floor of a building. The plan shows various rooms including Steve's Office, Rose's Office, Graphic Dept., Break Rm / Conference, Men's and Women's restrooms, a 1-hour rated wall, Work Area 100, Office 101, Work Area 102, Office 104, and Office 103. It also features a central elevator, stairs, and a computer/phone security room. Dimensions and room numbers are clearly marked.

## First floor

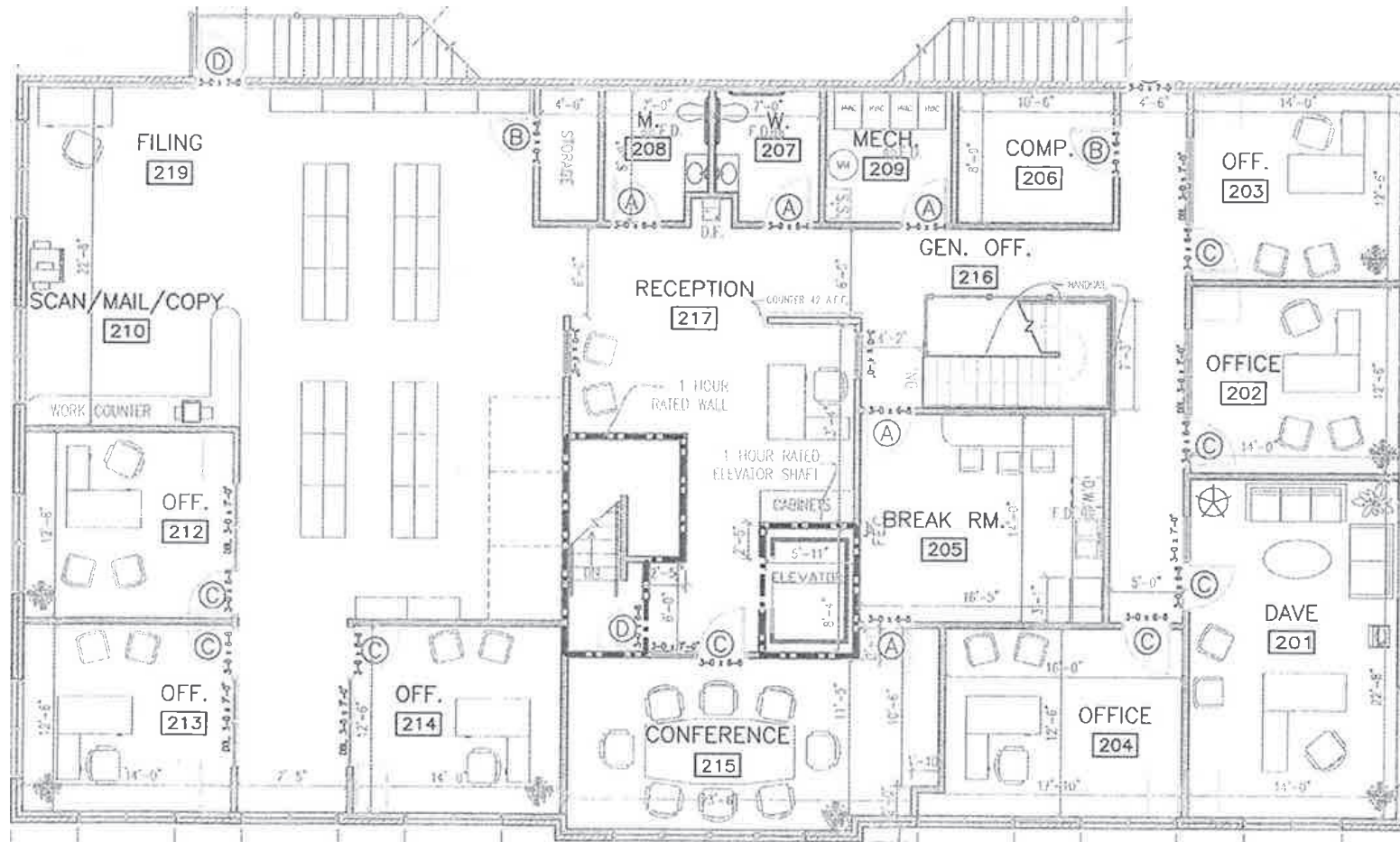
**AVISON  
YOUNG**



# Office building for sale or lease

256 Jackson Meadows Drive

## FLOORPLAN



Second floor

**Brent Basham**  
Vice President  
+1 615 727 7406  
brent.basham@avisonyoung.com

**AVISON  
YOUNG**

# Office building for sale or lease

## DEMOGRAPHICS - FIVE MILE RADIUS

256 Jackson Meadows Drive



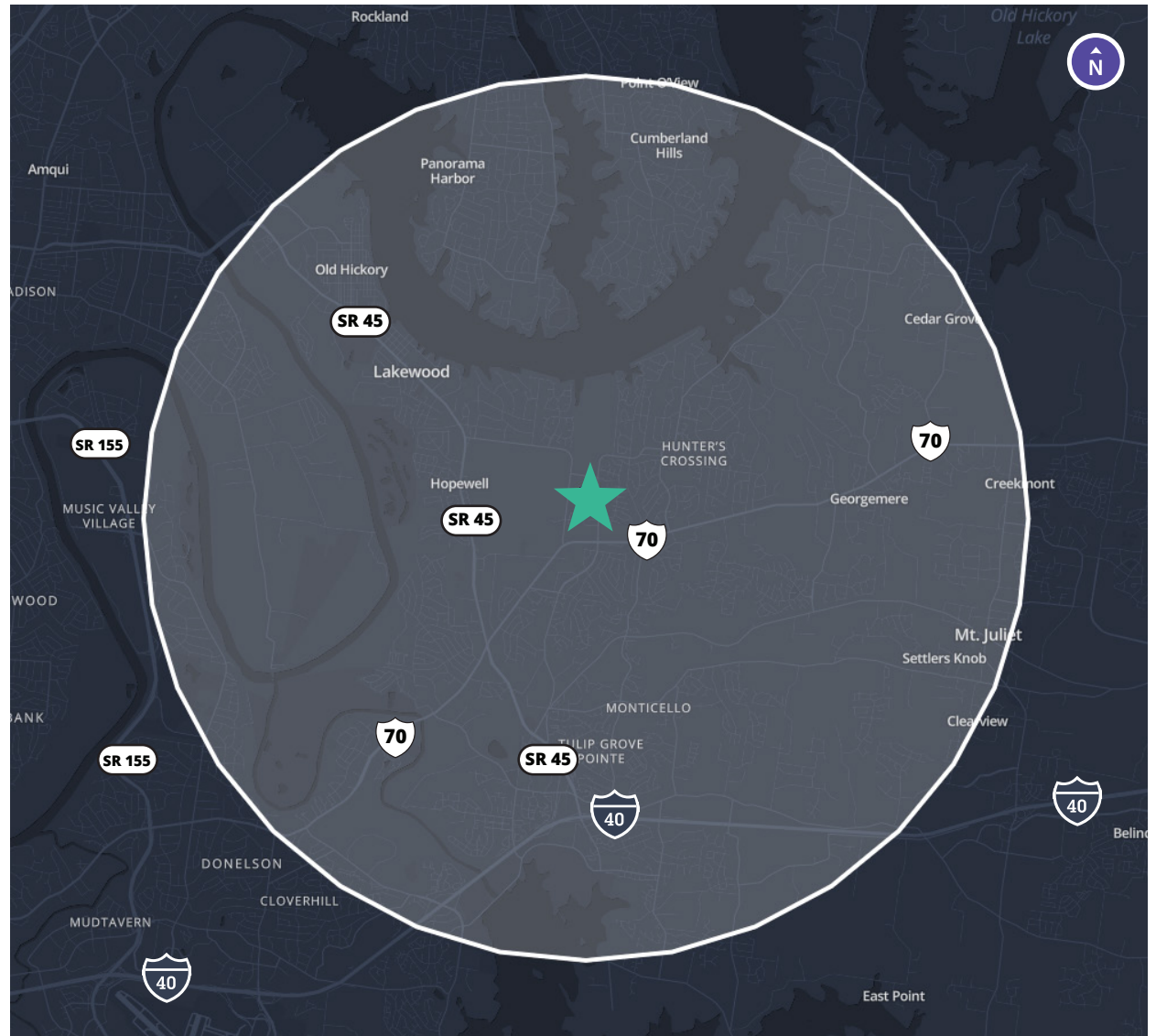
Population  
**114,465**



Average household income (2023)  
**\$104,237**



Average household income (2028)  
**\$121,023**



**Brent Basham**

Vice President

+1 615 727 7406

[brent.basham@avisonyoung.com](mailto:brent.basham@avisonyoung.com)

**AVISON  
YOUNG**

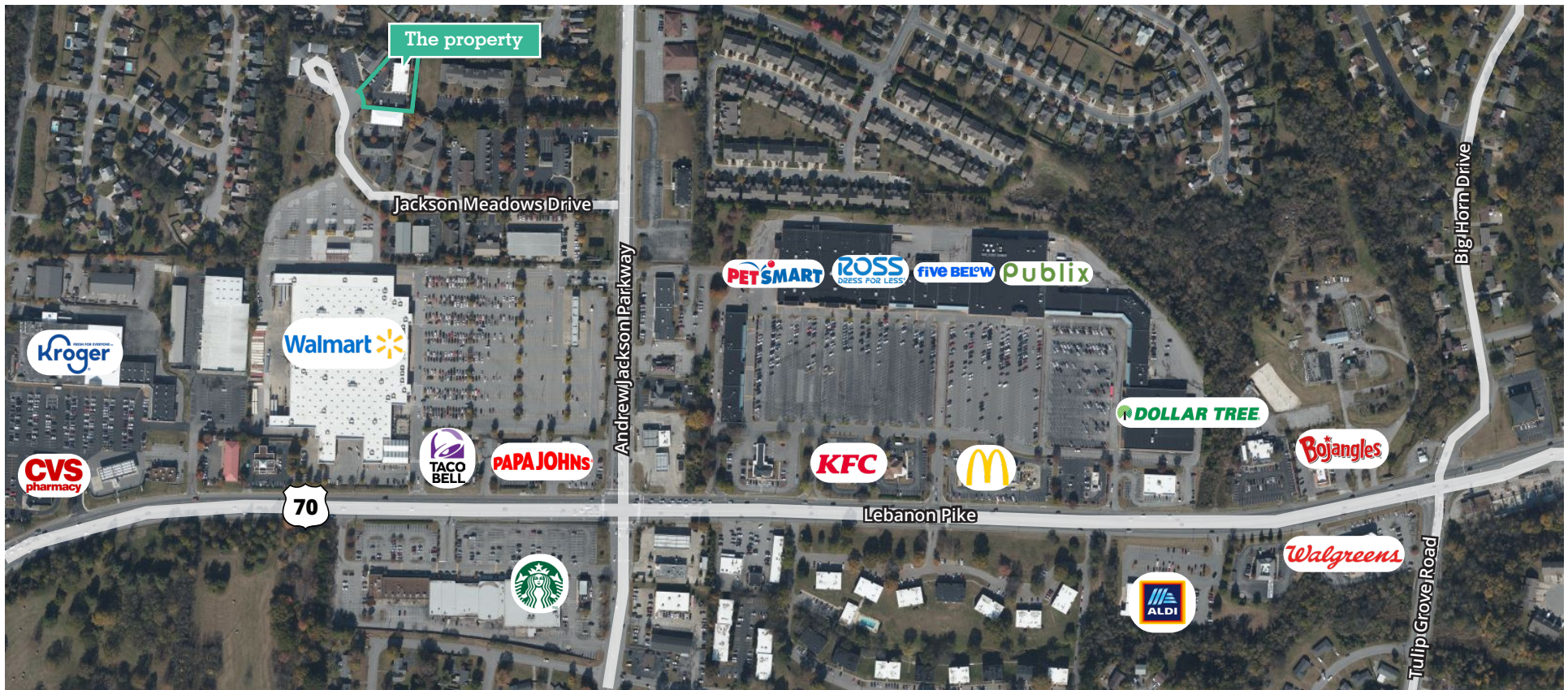


# Office building for sale or lease

256 Jackson Meadows Drive

## AREA MAP

This property is located in the Hermitage area of Nashville, which is east of the International Airport. This vibrant area is characterized by Class A office parks, hotel, and retail services. More than 100,000 people live within five miles of the property. Summit Medical Center is a major regional hospital that serves most of eastern Davidson County, and rapidly growing Wilson County to the east. The traffic circulation in the immediate vicinity reflects the dynamic residential and business growth of the past 20 years in this community.



**Brent Basham**  
Vice President  
+1 615 727 7406  
[brent.basham@avisonyoung.com](mailto:brent.basham@avisonyoung.com)

**AVISON  
YOUNG**