

# 6101 State Route 247

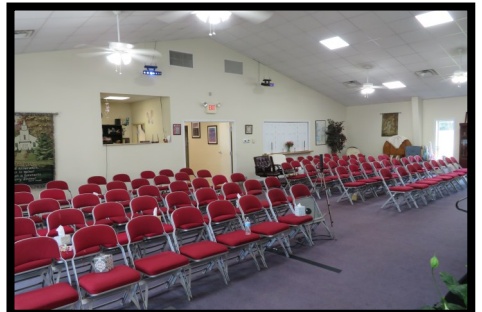
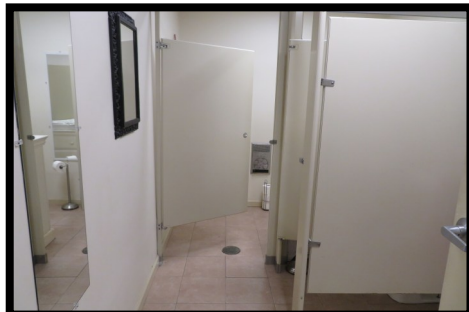
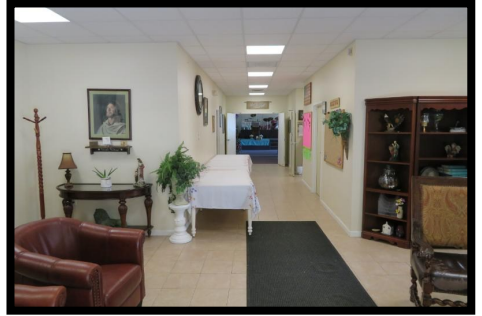
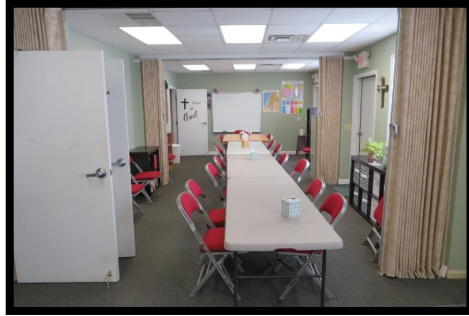


These multi-purpose structures can serve a multitude of uses! Approx. 50x80 clear span steel structure w/ covered porch! 40x50 open area w/14 ft. raised ceiling, 22x42 entry/foyer, 14x36 office/classrooms, 21x21 eat-in kitchen w/walk-in pantry, men & women bathrooms, laundry w/step-in shower, 6x8 sound room! Carpet & tile floors, 4 gas HVAC systems, floored attic storage! 24x72 wood frame structure w/200-amp electric, concrete floor & 24x24 insulated area w/air conditioning, 24x48 enclosed carport w/electric! 12x52 concrete pad w/2 - 8x24 box truck refrigerated boxes! Approx. 1 acre gravel parking area, circle driveway, 12" drainage tile network, oversized septic system! Multiple outbuildings for storage, carport/picnic shelters & fenced area! A generous 13.715 acres with 7.8 acres of woodlands, minutes from town! This offering once served our community as a church & food ministry. Now is the time for your vision! Looking for a retreat, campgrounds, machine shop, woodworking, manufacturing, car lot, offices, wedding/banquet venue... this is it!



937-393-7222

[www.TheDickeyGroup.com](http://www.TheDickeyGroup.com)



Jeff Dickey ABR, CRS, GRI, e-PRO

8990 State Route 785

Hillsboro, OH 45133

937-393-7222

Jeff@TheDickeyGroup.com

**FREE** Visual Tour on our Website

[www.TheDickeyGroup.com](http://www.TheDickeyGroup.com)



*"Systems to Create a Moving Experience"™*